



2019 TECHNICAL CATALOG

SEALLECTDESIGNS™

Engineering Innovations for Outdoor Enthusiasts



Wholesale Only

Here at Sea-Lect Designs we believe in putting our retail partners first, because of this philosophy we do not do any direct retail sales. This means we direct any customers that are in your area to you and not to our website.

Research Driven Products

When it comes to product development we listen. We listen to our retailers, customers, manufacturers and pro staff. We listen to what it is that our retailers want from packaging and merchandising solutions, we listen to our customers when there is something missing in the marketplace, and we listen to our pro-staff to improve our current products and prototypes. The best research is done when you have many sources of feedback.

Large Product Offering

As a supplier of both retail shops and manufacturers we want to insure that we have everything that will meet the needs of both types of customers.

Made in America

Made in Everett, WA with the injection molding capacity of our sister company Sea-Lect Plastics, most of our plastic products are made in the United States where we control all phases of manufacturing to ensure consistent quality.

Customer Centered

We believe that customer service is an essential part of maintaining relationships, from the largest manufacturer to the smallest Mom and Pop paddle shop. We want to be a valuable partner in your success and that starts with helping you determine your needs and offer solutions to answer your questions or concerns in a timely manner.

Visit us online at SeaLectDesigns.com

Sea-Lect Designs Hardware Kits

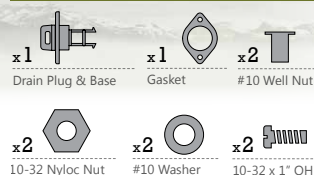
What are “-9” hardware kits? We have taken our most popular hardware items and made them into kits. All kits include hardware items, fasteners, and installation instructions that simplify what retailers must stock in order to meet their customer’s needs. When your customer leaves the shop with one of our kits, they will have all the necessary parts and knowledge necessary to successfully install any of our kits.



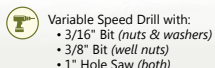
SEA-LECT DESIGNS
Engineering Innovations for Outdoor Enthusiasts

Fasteners
Included

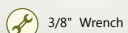
KIT INCLUDES



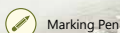
RECOMMENDED TOOLS



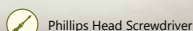
Variable Speed Drill with:
• 3/16" Bit (nuts & washers)
• 3/8" Bit (well nuts)
• 1" Hole Saw (both)



3/8" Wrench



Marking Pen



Phillips Head Screwdriver



Nuts & Washers

For installations with access to backside of mounting surface, use nuts & washers.



Well Nuts

For installations without access to backside of mounting surface, use well nuts.

Install Visualization

The front of every kit shows what the successfully completed project should look like, helping you find the perfect item for your specific needs.

Kit Includes

All instructions show everything included in the package, assuring that the kit contains everything required to install the product on the first try.

Recommended Tools

When starting a project it helps to know from the start everything you will need to finish the project in a timely manner. We have listed all the tools and sizes required to do the job right.

Choosing your Fastener

Since not all projects are the same, we have included two styles of fasteners to insure that you can complete the project whether you have access to the backside of the mounting surface or not.

Easy to Read Instructions

Illustrated installation instructions provide easy to follow steps so you spend less time with a screwdriver and more time with a paddle.



Why Well Nuts?

At Sea-Lect Designs, we have chosen to use well nuts over pop-rivets in almost every case. We encourage you to use nuts and bolts whenever the backside of the mounting surface is accessible. For those times when you can't reach the backside, we've included well nuts as an alternative. Here is why we've chosen well nuts instead of pop-rivets for those hard-to-reach installs:

Usability

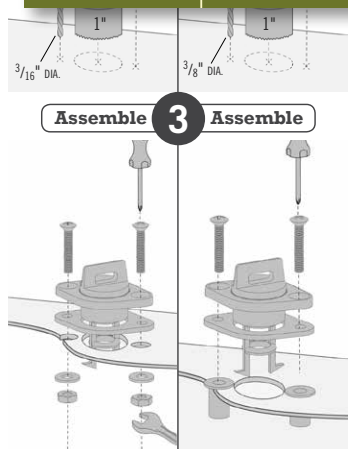
Requires common household tools as opposed to special pop-rivet gun.

Strength

Better holding strength than pop-rivets.

Water Tightness

Well nut seal is water-tight, whereas pop-rivet seal is not.





PRICES

F.O.B. Everett, WA. All prices subject to change without notice.

PAYMENT & CREDIT

Credit cards are preferred; however we can extend credit to firms with a satisfactory credit rating and have furnished credit references. Credit card and COD shipments will be made to new accounts until credit has been established. Accounts that exceed 30 days past due will be placed on COD basis and may be required to complete a new credit application to be placed on open account again.

FREIGHT

All freight charges are invoiced with each order as a separate amount at the bottom of the invoice and there is no discount allowed on freight. Sea-Lect Designs utilizes UPS for parcel shipments and will price shop all LTL shipments to supply the best available rate available to us. If you desire to use your own carrier, a valid account number must be provided at the time of order to ship freight collect; all related charges (freight, duties, taxes, pickup and delivery charges, etc.) will be billed by your chosen carrier and not deductible from Sea-Lect Designs invoice. Any freight charges reversed to Sea-Lect Designs will be back charged to your account.

MINIMUM ORDER

We can accommodate special orders and do not require a minimum dollar amount for ordering; however, if an order is less than \$50, a \$5 handling fee will be charged. We also reserve the right to require minimum total yearly dollar sales amounts to be met to receive these prices.

RETURNS

A Return Goods Authorization (RGA) number must be obtained within 90 days of purchase prior to any return. Credit will not be issued for goods returned without prior authorization. Special order items cannot be returned. All returned Sea-Lect Designs products must include:

- 1) A Listing of Items Being Returned
- 2) The Date of Purchase
- 3) Invoice Number
- 4) Sea-lect Designs Order Number
- 5) Reason for Return

Please identify any defects in as much detail as possible. All non-warranty items returned must be in original packaging, in like new condition, and available for resale. Returned items are subject to a minimum 15% restocking charge. Please do not deduct from your payment until you have received our credit memo. Our street address for returns is 3402 Smith Avenue, Everett, Washington 98201.

BACK ORDERS

Our standard policy is to ship all back orders. If back orders are not desired, please specify on every order, or inquire as to how we can change your account status to prevent all future back-orders. We reserve the right to cancel any items on the original order where an extended delivery time is expected. We also offer a freight allowance on backordered items when shipped, and freight charges on backordered items do not need to be paid on orders within the continental U.S. provided our preferred carrier is used. Shipments to Canada, Alaska, and Hawaii must pay only 1/2 freight charge. Freight on backordered items is allowed only if taken when invoice is paid and invoice is paid within terms. There is no discount allowed on freight and there must not be any outstanding overdue invoices on your account. COD accounts are not eligible for freight deduction on backordered items. If you desire another carrier than our preferred you will not be allowed to deduct freight charges.

DELIVERY

We will make every effort to ship urgent orders (UPS 1st, 2nd or 3rd Day Air, etc.) received by 1:00 pm Pacific Time the same afternoon.

DAMAGED OR DEFECTIVE GOODS

Any goods received damaged or defective can be returned following our return policy stated above. If determined to be defective or damaged at the time of shipment, we will either repair or replace at no charge or issue credit - however, no allowances will be made for labor involved in the removal or reinstallation of these items. Any good damaged in shipment needs to be claimed with the carrier at time of arrival.

CONDITIONS

Typographical and stenographic errors subject to correction. Purchaser terms inconsistent with those stated herein which may appear on purchaser's formal order will not be binding to Sea-Lect Designs.

CONTACT

BILLING ADDRESS
Sea-lect Designs
P.O. Box 67
Everett, WA 98206
United States

SHIP-TO ADDRESS
Sea-lect Designs
3402 Smith Avenue
Everett, WA 98201
United States

CUSTOMER SERVICE

HOURS 8:00am - 5:00pm PST
PHONE (425) 252-2149
FAX (425) 339-1345
E-MAIL info@SealectDesigns.com

WHY ARE PROPOSITION 65 WARNINGS IN OUR SEA-LECT DESIGN CATALOG?

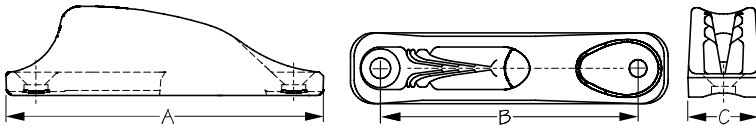
We at Sea-Lect Designs strive to do the right thing as a responsible manufacturer. While no changes have been made to our products that have been in our catalog for years, and even though the Prop 65 label is only a California requirement, Sea-Lect Designs, out of an abundance of caution, is labeling all Prop 65 items regardless of their intended destination.

So, as part of California's Right to Know, you will see Prop 65 warnings on some of our product packaging, in our catalog, and on our web site.

Prop 65 was enacted in 1986 for California only. Its intent was to protect drinking water sources from being contaminated with chemicals known to cause cancer, birth defects, or other reproductive harm. Since its inception, it has grown to include approximately 1000 chemicals, many of which are found in common household items.

Labeled products for Sea-Lect Designs predominantly fall into three categories as pertains to Prop 65: Those containing brass, those with a galvanized finish, or those containing PVC. All brass contains lead, as does galvanizing solution. PVC, commonly used in wiring products, contains vinyl chloride. Both of these substances are listed as chemicals known to the state of California to cause cancer or reproductive toxicity.

For additional information on Prop 65 visit:
www.P65Warnings.ca.gov



CLAMCLEAT® JR.

Injection Molded Nylon



Bulk	Display	A	B	C	Line Size	Color	Fastener	Wt.(lb.)	Std. Pack
K002030	K002030-1	3-1/4"	2-5/8"	11/16"	1/8"-1/4"	Black	#8 OH	.04	10 ea



CLAMCLEAT® JR. KIT

Injection Molded Nylon



Bulk	Display	Parts Included	Wt.(lb.)	Std. Pack
n/a	K002030-9	Clamcleat® Jr. (1) + Fasteners	.06	10 ea

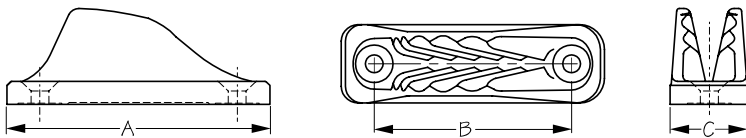


CLAMCLEAT® JR. TRACK KIT

Injection Molded Nylon/304 Stainless Steel



Bulk	Display	Parts Included	Wt.(lb.)	Std. Pack
n/a	K002030T-9	Clamcleat® Jr. (1) 8-32 x 1/2" OH (2) 8-32 Track Fastener (2)	.12	10 ea

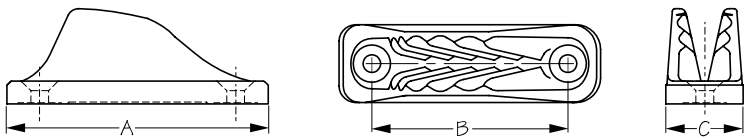


CLAMCLEAT® MINI

Injection Molded Nylon



Bulk	Display	A	B	C	Line Size	Color	Fastener	Wt.(lb.)	Std. Pack
K002040	K002040-1	2-1/16"	1-7/16"	5/8"	1/8"-1/4"	Black	#8 OH	.02	10 ea

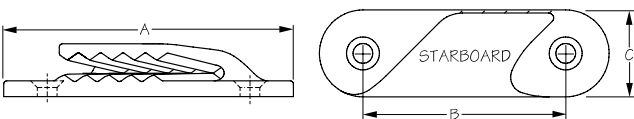


CLAMCLEAT® MIDI

Injection Molded Nylon



Bulk	Display	A	B	C	Line Size	Color	Fastener	Wt.(lb.)	Std. Pack
K002090	K002090-1	2-7/8"	2-1/8"	3/4"	5/32"-5/16"	Black	#8 OH	.04	10 ea

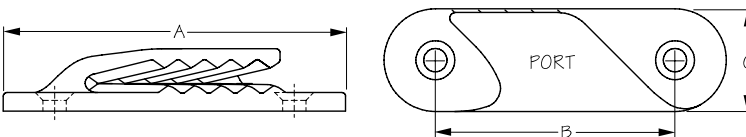


CLAMCLEAT® FINE LINE STARBOARD

Injection Molded Nylon



Bulk	Display	A	B	C	Line Size	Color	Fastener	Wt.(lb.)	Std. Pack
K002130	K002130-1	2-3/4"	1-15/16"	13/16"	1/16"-3/16"	Black	#8 OH	.02	10 ea



CLAMCLEAT® FINE LINE PORT

Injection Molded Nylon



Bulk	Display	A	B	C	Line Size	Color	Fastener	Wt.(lb.)	Std. Pack
K002140	K002140-1	2-3/4"	1-15/16"	13/16"	1/16"-3/16"	Black	#8 OH	.02	10 ea

Sea-Lect Designs

CLAMCLEAT® FINE LINE PORT & STARBOARD KIT

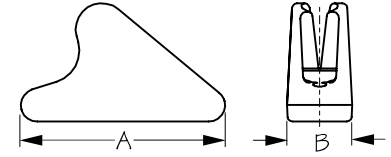
Injection Molded Nylon



Bulk	Display	Parts Included	Wt.(lb.)	Std. Pack
n/a	K002134-9	Clamcleat® Fine Line Port (1) Clamcleat® Fine Starboard (1) 8-32 x 1" OH (4) 8-32 Nyloc nut (4) #8 Fender washer (4)	.06	10 ea

CLAMCLEAT® LINE LOCK

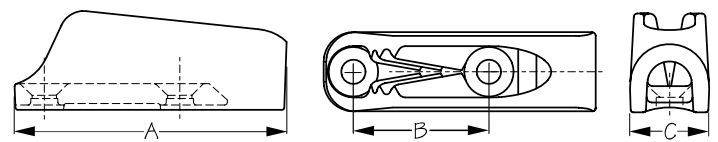
Injection Molded Nylon



Bulk	Display	A	B	Line Size	Color	Fastener	Wt.(lb.)	Std. Pack
K002600	K002600-1	13/16"	3/8"	1/16"-3/16"	Black	None	.01	10 ea / 10 pr
K002660	K002660-1	13/16"	1/4"	3/64"-1/8"	Black	None	.01	10 ea / 10 pr

CLAMCLEAT® MICRO

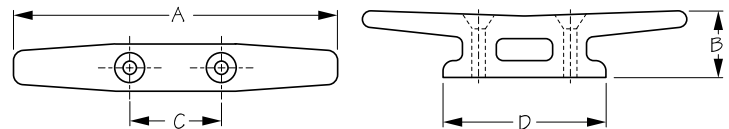
Injection Molded Nylon



Bulk	Display	A	B	C	Line Size	Color	Fastener	Wt.(lb.)	Std. Pack
K002630	K002630-1	1-3/4"	15/16"	1/2"	3/64"-5/32"	Black	#6 OH	.02	10 ea

OPEN BASE CLEAT

Injection Molded Nylon



Bulk	Display	Color	A	B	C	D	Fastener	Wt.(lb.)	Std. Pack
K043030	K043030-1	Black	3"	11/16"	1"	1-5/8"	#6 OH	.03	10 ea / 10 pr
K043040	K043040-1	Black	4"	7/8"	1-1/8"	2"	#8 OH	.03	10 ea / 10 pr
K043050	K043050-1	Black	5"	1-1/16"	1-7/16"	2-1/2"	#10 OH	.06	10 ea / 10 pr

All Sea-lect Designs Open Base Nylon Cleats are designed with a molded-in recess in the base which traps sealant in place increasing watertightness.

OPEN BASE CLEAT KIT

Injection Molded Nylon



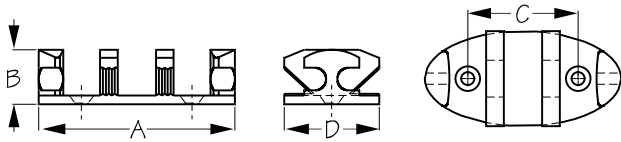
Bulk	Display	Parts Included	Wt.(lb.)	Std. Pack
n/a	K043030-9	3" Open base cleat (2) 6-32 x 1" OH (4) 6-32 Nyloc nut (4) #6 Flat washer (4)	.05	10 ea
n/a	K043040-9	4" Open base cleat (2) 8-32 x 1-1/4 OH (4) 8-32 Nyloc nut (4) #8 Fender washer (4)	.06	10 ea

5" OPEN BASE CLEAT TRACK KIT

Injection Molded Nylon/304 Stainless Steel



Bulk	Display	Parts Included	Wt.(lb.)	Std. Pack
n/a	K043050T-9	5" Open Base Cleat (1) 8-32 x 1-1/4" OH (2) 8-32 Track Fastener (2)	.12	10 ea



ZIG ZAG CLEAT

Injection Molded Nylon



Bulk	Display	A	B	C	D	Fastener	Wt.(lb.)	Std. Pack
K043540	K043540-1	3-1/2"	15/16"	1-15/16"	1-3/4"	#10 OH	.08	10 ea

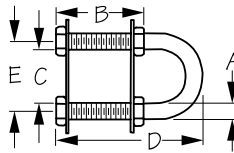


ZIG ZAG CLEAT KIT

Injection Molded Nylon



Bulk	Display	Parts Included	Wt.(lb.)	Std. Pack
n/a	K043540-9	Zig-Zag cleat (1) 10-32 X 3/4" OH (2) 10-32 Nyloc nut (2) #10 Fender washer (2)	.12	10 ea



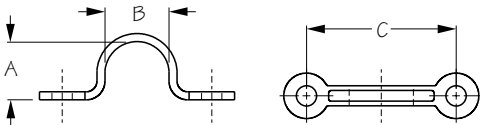
BOW EYE

Machined 304 Stainless Steel



Bulk	Display	Threads	A	B	C	D	E	B.S. (lb.)	Wt.(lb.)	Std. Pack
K080031	K080031-1	3/8" NC	3/8"	1-1/2"	1-1/16"	2-7/8"	1-7/16"	16,000	.22	10 ea

Sea-lect Designs Bow Eyes come with adjustable finished nuts as compared to the crimped ring used on most other bow eyes. The 3/8" shafts have rolled threads. Plate sizes: K080031, 2-1/4" x 3/4".

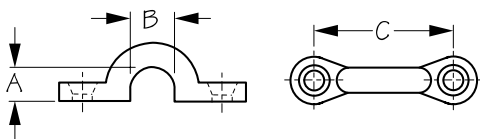


PAD EYE

Stamped 304 Stainless Steel



Bulk	Display	A	B	C	Fastener	Wt.(lb.)	Std. Pack
K081101	n/a	1/2"	7/16"	1-1/8"	#6 PH	.01	10 ea
K081102	n/a	5/8"	9/16"	1-3/8"	#8 PH	.01	10 ea
K081103	n/a	3/4"	3/4"	1-3/4"	#10 PH	.03	10 ea

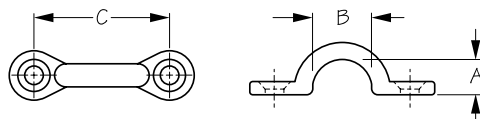


PAD EYE

Forged 304 Stainless Steel



Bulk	Display	A	B	C	Fastener	Wt.(lb.)	Std. Pack
K081200	K081200-1	5/16"	3/8"	1-3/8"	#8 OH	.03	10 ea / 10 pr
K081205	K081205-1	3/8"	1/2"	1-5/8"	#10 OH	.05	10 ea / 10 pr



PAD EYE

Die Cast Zinc Chrome Plated



Bulk	Display	A	B	C	Fastener	Wt.(lb.)	Std. Pack
K081242	K081242-1	3/8"	1/2"	1-3/8"	#8 OH	.02	20 ea / 10 sets

Display Sets Include: (6) Pad Eyes.

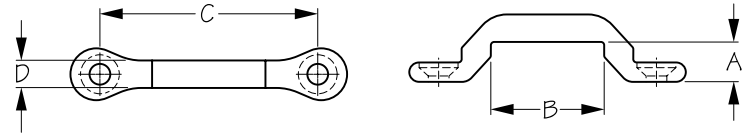
⚠ **WARNING:** Cancer and Reproductive Harm - www.P65Warnings.ca.gov

Sea-Lect Designs



TIE DOWN EYE STRAP

Forged 304 Stainless Steel



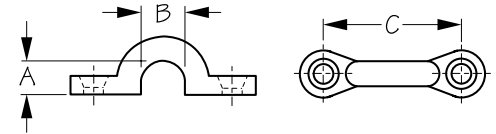
Bulk	Display	A	B	C	D	Fastener	Wt.(lb.)	Std. Pack
K081261	K081261-1	3/8"	1-1/16"	2-1/8"	1/4"	#10 OH	.06	10 ea / 10 pr
K081262	K081262-1	3/8"	2"	3-1/8"	1/4"	#10 OH	.07	10 ea / 10 pr

Tie Down Eye Straps can be used for a variety of hold down applications. Available in two sizes, fitting 1" and 2" webbing. The K081261 works great as a tie down point for most cam-buckle straps.



PAD EYE

Forged Bronze Wire



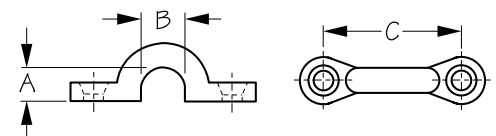
Bulk	Display	Finish	A	B	C	Fastener	Wt.(lb.)	Std. Pack
K081270	K081270-1	Bronze	5/16"	3/8"	1-3/8"	#8 OH	.04	10 ea / 10 pr
K081271	K081271-1	Bronze	3/8"	1/2"	1-9/16"	#10 OH	.06	10 ea / 10 pr

⚠ WARNING: Cancer and Reproductive Harm - www.P65Warnings.ca.gov



PAD EYE

Injection Molded Nylon



Bulk	Display	A	B	C	Fastener	Color	Wt.(lb.)	Std. Pack
K081300	K081300-1	11/32"	11/32"	1-1/16"	#8 OH	Black	.01	100 ea / 10 sets
K081310	K081310-1	3/8"	1/2"	1-3/8"	#8 OH	Black	.01	100 ea / 10 sets

Our standard, best-selling pad eye! Also available with a flat top to accept a pop rivet or pan head screw (K081340 and K081350). Display Sets Include: (6) Pad Eyes.



PAD EYE KIT

Injection Molded Nylon

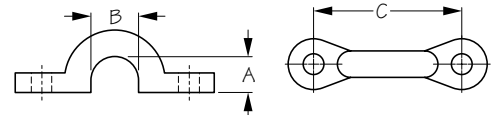


Bulk	Display	Parts Included	Wt.(lb.)	Std. Pack
n/a	K081310-9	3/8" Pad eye (6) 10-32 x 3/4" OH (12) 10-32 Nyloc nut (12) #10 Flat washer (12)	.02	10 ea



POP RIVET MOUNT PAD EYE

Injection Molded Nylon



Bulk	Display	A	B	C	Fastener	Color	Wt.(lb.)	Std. Pack
K081340	K081340-1	11/32"	11/32"	1-1/16"	3/16" Pop Rivet	Black	.01	100 ea / 10 sets
K081350	K081350-1	3/8"	1/2"	1-3/8"	3/16" Pop Rivet	Black	.01	100 ea / 10 sets

The fastener pads are flat topped to accept a 3/16" pop rivet (K799555BK) or pan head screw. Also available with a recessed top to accept an oval head screw (K081300 and K081310). Display Sets Include: (6) Pad Eyes.

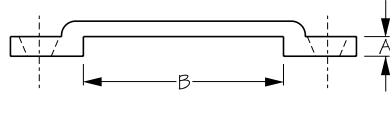
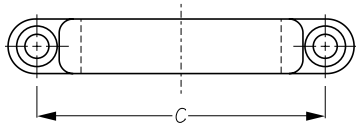


POP RIVET MOUNT PAD EYE KIT

Injection Molded Nylon



Bulk	Display	Parts Included	Wt.(lb.)	Std. Pack
n/a	K081310-9	3/8" Pad eye (6) 10-32 x 3/4" OH (12) 10-32 Nyloc nut (12) #10 Flat washer (12)	.02	10 ea



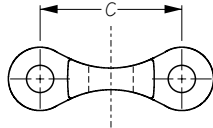
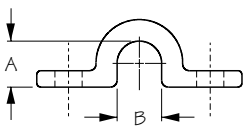
FOOTMANS LOOP

Injection Molded Nylon



Bulk	Display	A	B	C	Fastener	Wt.(lb.)	Std. Pack
K081370	K081370-1	3/16"	1-5/8"	2-5/16"	#10 OH	.01	10 ea / 10 sets
K081380	K081380-1	3/16"	1"	2"	#10 OH	.01	10 ea / 10 sets

Tie Down Eye Straps can be used for a variety of hold down applications. Available in two sizes, fitting 1" and 2" webbing. The K081251 work great as a tie down point for most cam-buckle straps. Display Sets Include: (6) Footmans Loops.



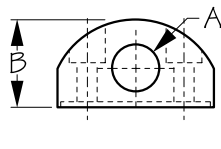
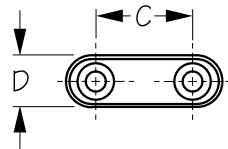
POP RIVET MOUNT PAD EYE

Investment Cast 316 Stainless Steel



Bulk	Display	A	B	C	Fastener	Wt.(lb.)	Std. Pack
K081850	K081850-1	11/32"	11/32"	1-1/16"	3/16" Pop Rivet	.02	10 ea / 10 pr.

The fastener pads are flat topped to accept a 3/16" pop rivets (K799555BK) or pan head screws.

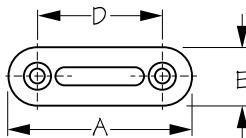
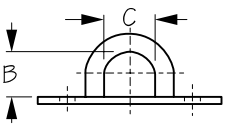


FAIRLEAD

Injection Molded Nylon



Bulk	Display	Color	A	B	C	D	Fastener	Wt.(lb.)	Std. Pack
K082010	n/a	Black	3/8"	3/4"	7/8"	7/16"	#8 PH	.01	10 ea
K082016	n/a	Black	5/8"	1-1/4"	1-3/8"	13/16"	#8 PH	.04	10 ea
K082051	n/a	Black	9/16"	1-1/8"	1"	11/16"	#8 PH	.03	10 ea

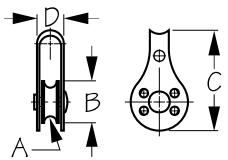


OBLONG EYE PLATE

Stamped 304 Stainless Steel



Bulk	Display	A	B	C	D	E	Fastener	Wt.(lb.)	Std. Pack
K089701	K089701-1	2-1/8"	1/2"	5/8"	1-1/2"	5/8"	#10 OH	.03	10 ea
K089702	K089702-1	2-9/16"	5/8"	3/4"	1-13/16"	3/4"	#10 OH	.07	10 ea
K089703	K089703-1	3-3/16"	13/16"	7/8"	2-3/16"	15/16"	#10 OH	.14	10 ea

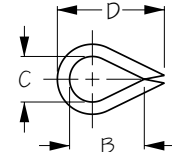
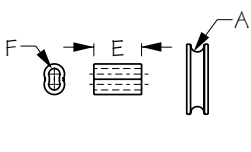


PULLEY

Stainless Steel W/Plastic Sheave



Bulk	Display	A (Wire Dia.)	B	C	D	Sheave	Wt.(lb.)	Std. Pack
K092100	K092100-1	1/4"	1"	1-13/16"	1/2"	Plastic	.04	10 ea



THIMBLE W/ SWEDGE

Stamped 304 Stainless Steel



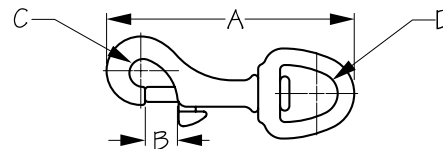
Bulk	Display	A (Wire Dia.)	B	C	D	E	F	Wt.(lb.)	Std. Pack
n/a	K171103-1	1/16"	11/16"	3/8"	7/8"	3/8"	1/16"	.03	10 pr
K171103	n/a	Thimble Only						.01	100 ea
K0P74802	n/a	Swedge Only						.01	100 ea

K171103-1 includes 2 Thimbles & 2 Swedge each. K171103 (Thimbles) and K0P74802 (Swedges) are packed 100 per bag.



SWIVEL EYE BOLT SNAP

Sand Cast Brass



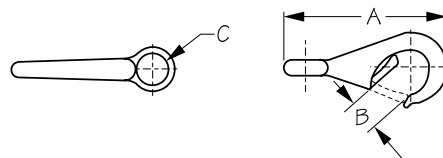
Bulk	Display	A	B	C	D	Wt.(lb.)	Std. Pack
K139010	K139010-1	3-5/16"	7/16"	3/8"	11/16"	.12	10 ea
K139016	K139016-1	3-5/16"	7/16"	3/8"	5/8"	.12	10 ea

⚠ WARNING: Cancer and Reproductive Harm - www.P65Warnings.ca.gov



FAST EYE BOAT SNAP

Sand Cast Brass



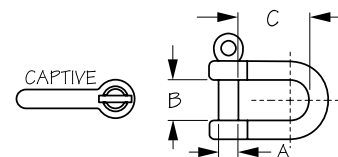
Bulk	Display	Size	A	B	C	Wt.(lb.)	Std. Pack
K139120	K139120-1	0	2-1/8"	1/4"	7/16"	.06	10 ea
K139121	K139121-1	1	2-7/8"	5/16"	5/8"	.11	10 ea

⚠ WARNING: Cancer and Reproductive Harm - www.P65Warnings.ca.gov



CAPTIVE PIN D-SHACKLE

Forged 316 Stainless Steel



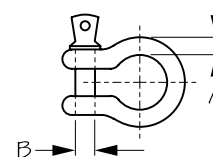
Bulk	Display	A	B	C	B.S. (lb.)	Wt.(lb.)	Std. Pack
K147123	K147123-1	5/32"	3/8"	11/16"	1,540	.02	10 ea
K147124	K147124-1	3/16"	7/16"	11/16"	2,200	.03	10 ea

When opening a Sea-lect Designs Captive Pin D-Shackle, the pin completely clears the opening of the shackle and is recessed into a secured flush position, the pin remains captive and will not fall out. With other shackles, the pin is not flush until you partially unscrew it.



SCREW-PIN ANCHOR BOW SHACKLE

Drop Forged Steel Hot Dipped Galvanized



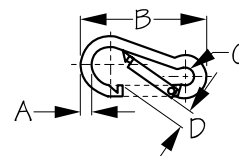
Bulk	Display	A	B	Wt.(lb.)	Std. Pack
K147804	K147804-1	3/16"	1/4"	.04	10 ea
K147806	K147806-1	1/4"	5/16"	.07	10 ea

⚠ WARNING: Cancer and Reproductive Harm - www.P65Warnings.ca.gov



SNAP HOOK

Formed 316 Stainless Steel

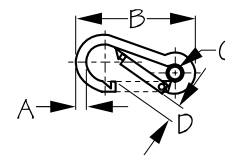


Bulk	Display	A	B	C	D	B.S. (lb.)	Wt.(lb.)	Std. Pack
K151560	K151560-1	1/4"	2-3/8"	5/16"	5/16"	700	.06	10 ea
K151580	K151580-1	5/16"	3-1/8"	7/16"	3/8"	1,400	.14	10 ea

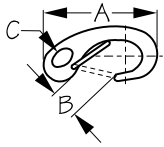


SNAP HOOK W/ EYE INSERT

Formed 316 Stainless Steel



Bulk	Display	A	B	C	D	B.S. (lb.)	Wt.(lb.)	Std. Pack
K151565	K151565-1	1/4"	2-3/8"	1/4"	5/16"	700	.06	10 ea
K151585	K151585-1	5/16"	3-1/8"	3/8"	3/8"	1,400	.15	10 ea

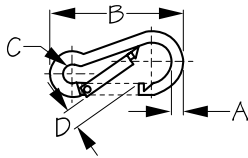


SPRING GATE SNAP HOOK

Investment Cast 316 Stainless Steel



Bulk	Display	A	B	C	Wt.(lb.)	Std. Pack
K154250	K154250-1	2"	7/16"	1/4"	.04	10 ea
K154270	K154270-1	2-3/4"	7/16"	3/8"	.11	10 ea



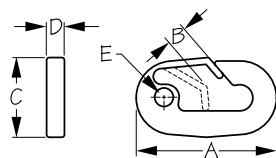
SNAP HOOK

Formed Mild Steel Electro-galvanized



Bulk	Display	A	B	C	D	B.S. (lb.)	Wt.(lb.)	Std. Pack
K156060	K156060-1	1/4"	2-3/8"	5/16"	5/16"	560	.06	10 ea
K156080	K156080-1	5/16"	3-3/16"	7/16"	7/16"	1,140	.14	10 ea

▲ WARNING: Cancer and Reproductive Harm - www.P65Warnings.ca.gov

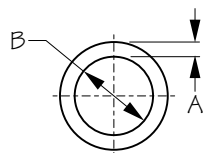


SKI ROPE SNAP

Injection Molded Nylon



Bulk	Display	A	B	C	D	E	Wt.(lb.)	Std. Pack
K157110	K157110-1	3-1/4"	5/8"	1-13/16"	7/16"	7/16"	.05	10 ea

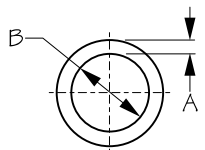


ROUND RING

Injection Molded Nylon



Bulk	Display	A	B	Wt.(lb.)	Std. Pack
K190580	K190580-1	3/8"	2"	.03	10 ea
K190583	K190583-1	9/32"	1-1/4"	.02	10 ea
K190589	K190589-1	1/4"	1"	.01	10 ea

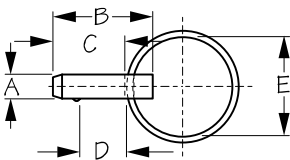


ROUND RING

Formed 304 Stainless Steel



Bulk	Display	A	B	B.S. (lb.)	Wt.(lb.)	Wt.(lb.)	Std. Pack
K191415	K191415-1	1/4"	1-1/2"	2,700	675	.08	10 ea
K191520	K191520-1	5/16"	2"	5,000	1,250	.16	10 ea



RELEASE PIN

Formed 304 Stainless Steel



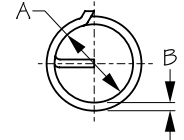
Bulk	Display	A	B	C	D	E	Wt.(lb.)	Std. Pack
K193425	K193425-1	1/4"	2-1/2"	2-3/16"	1-15/16"	1"	.04	10 ea

Sea-Lect Designs



SPLIT RING

Formed 316 Stainless Steel



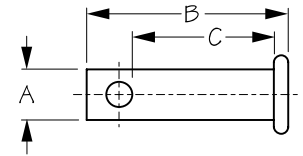
Bulk	Display	A	B	Pcs. Per Set	Wt.(lb.)	Std. Pack
K193562	K193562-1	15/32"	1/16"	4	.01	20 ea / 10 sets
K193563	K193563-1	5/8"	1/16"	4	.01	20 ea / 10 sets

Display Sets Include: (4) Split Rings.



CLEVIS PIN

Formed 316 Stainless Steel

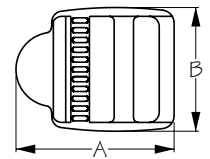


Bulk	Display	A	B	C	Wt.(lb.)	Std. Pack
K193605	K193605-1	3/16" - 5 mm	3/4"	9/16"	.01	10 ea



WEBBING LADDER LOCK

Injection Molded Nylon

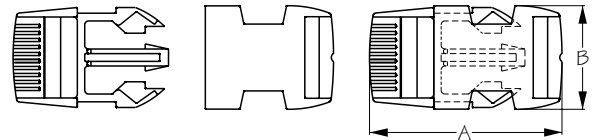


Bulk	Display	A	B	Webbing Width	Wt.(lb.)	Std. Pack
K199131	K199131-1	1-1/2"	1-1/8"	1"	.02	10 ea



WEBBING BUCKLE

Injection Molded Nylon



Bulk	Display	A	B	Webbing Width	Wt.(lb.)	Std. Pack
K199141	K199141-1	2-1/2"	1-1/4"	1"	.03	10 ea



SOLID BRAIDED NYLON ROPE

Nylon

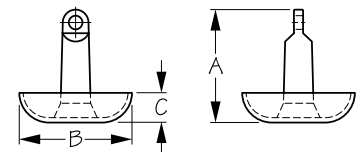


Bulk	Display	A (Dia.)	B (Length)	Color	Wt.(lb.)	Std. Pack
K303105500WH	n/a	3/16"	500'	White	4.50	1 spool
K303106500WH	n/a	1/4"	500'	White	6.25	1 spool
K303110500WH	n/a	3/8"	500'	White	19.50	1 spool



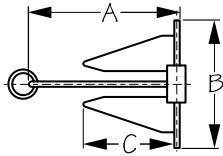
MUSHROOM ANCHOR

Cast Iron



Bulk	Display	Coating/ Paint	Size	A	B	C	Wt.(lb.)	Std. Pack
K314168	n/a	Black Vinyl	8	7-1/2"	6-11/16"	1-3/4"	7.8	1 ea

⚠ WARNING: Cancer and Reproductive Harm - www.P65Warnings.ca.gov



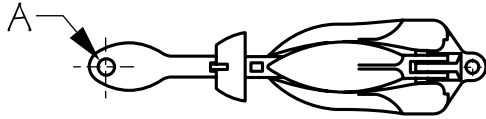
SEA-HOOK® ECONOMY SLIP RING ANCHOR

Hot Dipped Galvanized Stamped Steel



Bulk	Display	A	B	C	Wt.(lb.)	Std. Pack
K317705	n/a	14"	12"	9"	4.0	1 ea

⚠ **WARNING:** Cancer and Reproductive Harm - www.P65Warnings.ca.gov



FOLDING ANCHOR

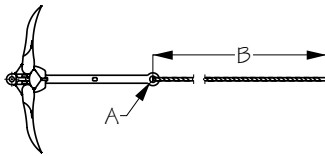
Hot Dipped Galvanized Iron/Forged Flukes



Bulk	Display	A	Boat Length	Recomm. Line / Length	Recomm. Chain / Length	Wt.(lb.)	Std. Pack
K318001	K318001-1	1/2"	5' - 10'	1/4" / 35'	3/16" / 7'-10'	1.5	1 ea
K318003	K318003-1	1/2"	5' - 12'	1/4" / 35'	3/16" / 7'-10'	3.5	1 ea
K318005	K318005-1	1/2"	5' - 14'	5/16" / 50'	3/16" / 7'-10'	5.5	1 ea

Inexpensive and easy to store, the Sea-lect Designs Folding Anchor makes an ideal backup anchor on larger boats, or can be used as a primary anchor on smaller boats, sailboats and inflatable boats.

⚠ **WARNING:** Cancer and Reproductive Harm - www.P65Warnings.ca.gov



FOLDING ANCHOR KIT - ECONOMY

Hot Dipped Galvanized Iron/Forged Flukes



Bulk	Display	A	B	Boat Length	Line / Length	Wt.(lb.)	Std. Pack
K318003K1	K318003K1-1	1/2"	20'	5' - 12'	3/16" / 20'	3.5	1 ea

The Folding Anchor Kit (Economy) includes everything you need to get started. It comes with our popular 3.5 lb. Folding Anchor (K318003) with 20' of 3/16" line, and a handy mesh bag.

⚠ **WARNING:** Cancer and Reproductive Harm - www.P65Warnings.ca.gov



PREMIUM ANTI-SNAG ANCHOR SYSTEM KIT

Hot Dipped Galvanized Iron/Forged Flukes



Bulk	Display	Parts Included	Wt.(lb.)	Std. Pack
n/a	K318003KP-9	3 Lbs. Folding Anchor (1) 3', 3/16" PVC Coated Anchor Chain (1) 3/16" Anchor Shackle (1) Fast Eye Boat Snap (1) Yellow Anchor Float (1) 35' of 3/8" Polypro Anchor Line (1) Cable Ties (10) Carrying Bag (1)	5.00	1 ea

The premium Anti Snag Anchor System will help in retrieving a hopelessly stuck anchor from the most stubborn of rivers, lakes, or ocean bottoms.

⚠ **WARNING:** Cancer and Reproductive Harm - www.P65Warnings.ca.gov

ANCHOR TROLLEY KIT

Injection Molded Nylon/Stainless Steel/Polyester



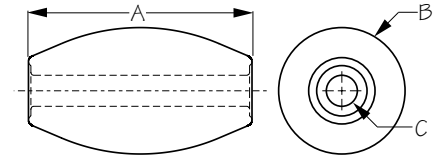
Bulk	Display	Parts Included	Wt.(lb.)	Std. Pack
n/a	K318100-9	3/16" Poly pro deck line - 12' (1) Zig-Zag cleat (1) 2" Nylon ring (1) Stainless steel pad eyes (2) Stainless Snap hook (2) Stainless pulley (2) 10-32 X 3/4" PH (6) 10-32 Nyloc nut (6) #10 Flat washer (6) Tri-fold pop rivets (6)	.08	5 ea

Our anchor trolley kit allows for easy one handed use allowing you to orient your boat in current or wind without having to move your anchor. Comes with all the fasteners and hardware to install yourself.



ANCHOR FLOAT

High Density Closed Cell Foam/Plastic Spindle Insert

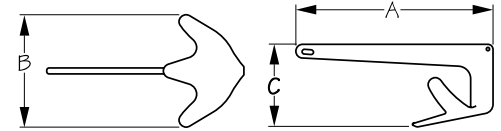


Bulk	Display	A	B	C	Wt.(lb.)	Std. Pack
n/a	K318200-1	5-1/2"	3-1/2"	5/8"	.20	10 ea



SEA-HOOK® CLAW ANCHOR

Hot Dipped Galvanized Investment Cast Steel



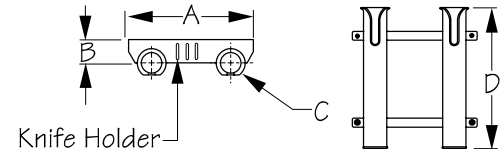
Bulk	Display	A	B	C	Recomm. Boat Length	Wt.(lb.)	Std. Pack
K318501	K318501-1	11-3/16"	7-3/8"	5-1/4"	up to 12'	2.2	1 ea

⚠ WARNING: Cancer and Reproductive Harm - www.P65Warnings.ca.gov



TWO POLE DECK MOUNT ROD HOLDER

Injection Molded Polypropylene



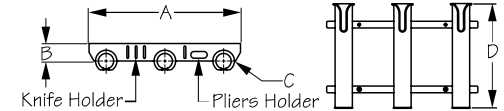
Bulk	Display	A	B	C	D	Color	Tool Holder	Wt.(lb.)	Std. Pack
K325029	K325029-1	9"	1-7/8"	1-3/4"	10-3/4"	Black	Yes	.73	5 ea

One-piece injection molded UV stabilized polypropylene two-pole rod holder. No assembly required, easy installation. Built-in knife and lure holder. Accommodates rods up to 1-3/4" in diameter. Includes four #8 stainless steel mounting screws.



THREE POLE DECK MOUNT ROD HOLDER

Injection Molded Polypropylene



Bulk	Display	A	B	C	D	Color	Tool Holder	Wt.(lb.)	Std. Pack
K325039	K325039-1	13-1/2"	1-7/8"	1-3/4"	10-3/4"	Black	Yes	1.10	7 ea

One-piece injection molded UV stabilized polypropylene three-pole rod holder. No assembly required, easy installation. Built-in knife, pliers and lure holder. Accommodates rods up to 1-3/4" in diameter. Includes four #8 stainless steel mounting screws.



ROD HOLDER GASKET

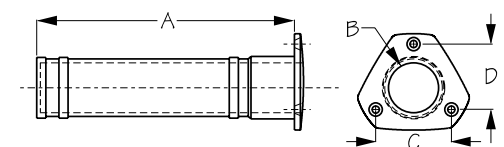
Injection Molded TPE

Bulk	Display	Description	Wt.(lb.)	Std. Pack
K325110FG	K325110FG-1	Foam Rod Holder Gasket for K32511X Series Rod Holder	.01	10 ea
K325160FG	K325160FG-1	Foam Rod Holder Gasket for K32516X Series	.01	10 ea
K325160G	K325160G-1	Injection Molded Rod Holder Gasket for K32516X Series	.01	10 ea



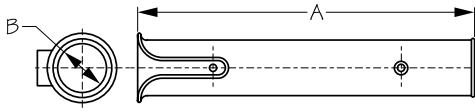
90° FLUSH MOUNT ROD HOLDER W/ CLOSED END

Injection Molded ABS



Bulk	Display	A	B	C	D	Color	Fastener	Wt.(lb.)	Std. Pack
K325112	K325112-1	8-1/2"	1-5/8"	2-1/2"	2-5/8"	Black	#10 OH	.42	40 ea / 8 ea

Closed end is great for use in kayaks!



SIDE MOUNT ROD HOLDER

Injection Molded Polypropylene



Bulk	Display	A	B	Style	Color	Fastener	Wt.(lb.)	Std. Pack
K325120	K325120-1	11-11/16"	1-3/4"	Flat Back	Black	#10 OH	.22	50 ea / 8 ea

A molded-in standoff is located on the back of the rod holder allowing direct mounting to any flat surface.



SIDE MOUNT ROD HOLDER KIT

Injection Molded Polypropylene



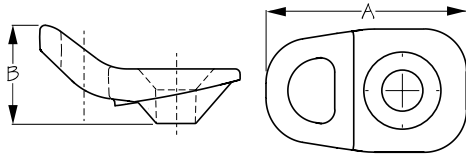
Bulk	Display	Parts Included	Color	Wt.(lb.)	Std. Pack
n/a	K325120-9	Side mount rod holder - black (1) 10-32 x 1-1/4" PH (2) 10-32 Nyloc nut (2) #10 Flat washer (2)	Black	.25	8 ea

ROD HOLDER CAP & GASKET

Injection Molded TPE



Bulk	Display	Description	Wt.(lb.)	Std. Pack
K325160CAP	K325160CAP-1	Injection Molded Rod Holder Cap & Gasket for K32516X Series	.10	10 ea



ROD HOLDER FITTING - SINGLE LOOP

Injection Molded Nylon



Bulk	Display	A	B	Fastener	Wt.(lb.)	Std. Pack
K325160F	K325160F-1	1-1/4"	1/2"	#10 OH	.01	100 ea / 10 sets

Display Sets Include: (6) Deck Fittings. Fits, K325162, K325163, K325166, K325167, K325112 and K325113.

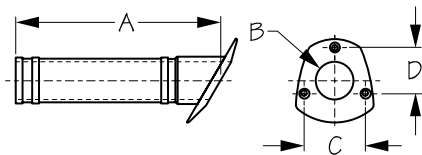


ROD HOLDER FITTING - SINGLE LOOP KIT

Injection Molded Nylon



Bulk	Display	Parts Included	Wt.(lb.)	Std. Pack
n/a	K325160F-9	Rod holder fitting-single loop (2) 10-32 X 1" OH (2) 10-32 Nyloc nut (2) #10 Flat washer (2) #10 Well nut (2)	.02	10 ea



FLUSH MOUNT ROD HOLDER W/ CLOSED END

Injection Molded ABS



Bulk	Display	A	B	C	D	Color	Fastener	Wt.(lb.)	Std. Pack
K325162	K325162-1	9-3/16"	1-5/8"	2-1/2"	2-5/8"	Black	#10 OH	.42	40 ea / 8 ea



FLUSH MOUNT ROD HOLDER W/ CLOSED END KIT

Injection Molded ABS

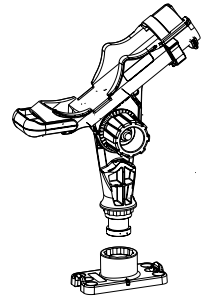


Bulk	Display	Parts Included	Wt.(lb.)	Std. Pack
n/a	K325162-9	Flush Mount Rod Holder (1) Cap and gasket (1) Rod holder leash fitting (1) 10-32 X 1-1/4" OH (3) 10-32 Nyloc nut (3) #10 Flat washer (3) #10 Well nut (3)	.50	8 ea



TRIPLE THREAT ROD HOLDER - SURFACE MOUNT

Injection Molded Polypropylene Fiberglass/Nylon



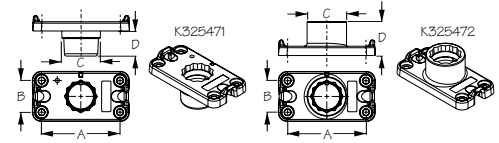
Bulk	Display	Base	Wt.(lb.)	Std. Pack
n/a	K325412-1	Surface Mount	1.08	5 ea

The triple threat rod holder was designed to be your one stop for all your reel styles, whether you Fish spin, Bait cast, or Fly reel this rod holder deals with it all. The quarter turn knob allows easy adjusting of the angle of the rod with a quick twist. The rear bail allows for vertical storage of rods for storage while moving from one location to another. Leash attachment points on the base give you a solid clip point for leashing your rod and reel while paddling in rough conditions.



TRIPLE THREAT ROD HOLDER BASE

Injection Molded Polypropylene Fiberglass/Nylon



Bulk	Display	A	B	C	D	Base Style	Fastener	Wt.(lb.)	Std. Pack
K325471	K325471-1	3-13/64"	1-9/32"	1-3/4"	1"	Flush Mount	1/4-20	.10	10 ea
K325472	K325472-1	3-13/64"	1-9/32"	1-3/4"	1"	Surface Mount	1/4-20	.10	10 ea

Want to have multiple mounting positions but only one rod holder? The flush or surface mount base has you covered.



FISHING RULER STICKER

Vinyl

Bulk	Display	Measuring Length	Wt.(lb.)	Std. Pack
n/a	K325900-1	24"	.01	10 ea

I once caught a fish this big ... really, I did! Stick on a Fishing Ruler Sticker to measure your catch up to 24". Need to measure a bigger fish? Stick on two Fishing Ruler Stickers!



CRATE TIE-DOWN KIT

Injection Molded Nylon/Polypro

Bulk	Display	Parts Included	Wt.(lb.)	Std. Pack
n/a	K326819-9	11/32" Nylon pad eyes (6) Locking bungee hook with sleeves (4) 1/4" Bungee 18" (2) 10-32 x 3/4" OH (12) 10-32 Nyloc nut (12) #10 Flat washer (12)	.50	10 ea

This kit allows you to simply and securely hold down your milk crate into the stern of your kayak.

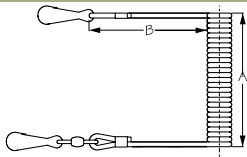


PREMIUM LEASH & ROD MOUNTING FITTING KIT

Injection Molded Nylon

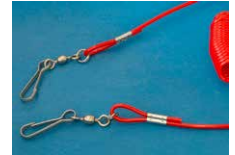
Bulk	Display	Parts Included	Wt.(lb.)	Std. Pack
n/a	K326825-9	Premium Leash (1) Rod Holder Fitting (1) Security Ties (6) Fastener Pack (1)	.18	10 ea

When your rod and reel cost the same as the kayak you're paddling keeping them in the boat is important. Rod mount fitting fits all flush mount rod holders (K32516X, K32511X)



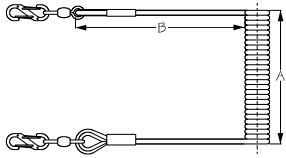
UTILITY LEASH

Delrin/Nylon/304 Stainless Steel



Bulk	Display	A	B	Wt.(lb.)	Std. Pack
n/a	K326910-1	48"	3-1/2"	.08	10 ea

Sea-Lect Designs Utility Leash is intended for use with any items that you use regularly and don't want to lose to the watery deep. Clip to your PFD, Boat, or tackle box for easy access. "A" Dimension references the length of the coil when fully stretched.



PREMIUM LEASH

Delrin/Nylon/304 Stainless Steel



Bulk	Display	A	B	Wt.(lb.)	Std. Pack
n/a	K326915-1	48"	3-1/2"	.18	10 ea

Sea-lect Designs Premium Leash features Nite Ize clips, stainless steel thimbles, and heat shrink swedge covers for a clean and tough leash for all your most used tools. Clip to your PFD, boat, or tackle box for ease of access. "A" Dimension references the length of the coil when fully stretched.

UTILITY LEASH & DECK MOUNT FITTING KIT

Injection Molded Nylon/Delrin



Bulk	Display	Parts Included	Wt.(lb.)	Std. Pack
n/a	K326920-9	Sea-lect Utility Leash (1) Kayak Deck Fitting (1) Security Ties (6) Fastener Pack (1)	.15	10 ea

Kit comes with everything you need to secure those high use tools and items you don't want to lose overboard. Comes with deck mount fitting to attach leash to, leash, and six security ties that you can attach to your rod, tools, or electronic devices.

PREMIUM LEASH & DECK MOUNT FITTING KIT

Injection Molded Nylon/304 Stainless Steel

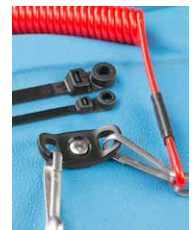


Bulk	Display	Parts Included	Wt.(lb.)	Std. Pack
n/a	K326925-9	Sea-lect Premium Leash (1) Kayak Deck Fitting (1) Security Ties (6) Fastener Pack (1)	.20	10 ea

Everything you need to secure those high use tools you don't want to lose overboard. Comes with deck mount fitting to attach leash to, leash with stainless steel thimbles, and six security ties that you can attach to your rod, tools, or electronic devices.

TWO UTILITY LEASH KIT & DECK MOUNT FITTING KIT

Injection Molded Nylon



Bulk	Display	Parts Included	Wt.(lb.)	Std. Pack
n/a	K326930-9	Utility Leashes (2) Kayak Deck Fitting double loop (1) Security Ties (6) Fastener Pack (1)	.20	10 ea

Everything you need to secure those high use tools and items you don't want to lose overboard. Comes with double loop deck mount fitting to attach leash to, two leashes, and six security ties that you can attach to your rod, tools, or electronic devices.

TWO PREMIUM LEASH KIT & DECK MOUNT FITTING KIT

Injection Molded Nylon/304 Stainless Steel



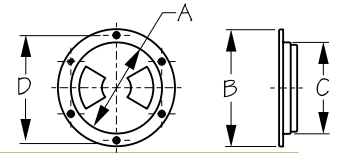
Bulk	Display	Parts Included	Wt.(lb.)	Std. Pack
n/a	K326935-9	Premium Leash (2) Kayak Deck fitting Double Loop (1) Security Ties (6) Fastener Pack (1)	.25	10 ea

Everything you need to secure those high use tools and items you don't want to lose overboard. Comes with double loop deck mount fitting to attach leash to, two leashes, and six security ties that you can attach to your rod, tools, or electronic devices.



QUARTER-TURN DECK PLATE WITH INTERNAL COLLAR

Injection Molded ABS/Polycarbonate



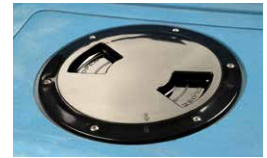
Bulk	Display	A	B	C	D	Color	Lid Texture	Fastener	Wt.(lb.)	Std. Pack
K336345	K336345-1	4-1/2"	6-1/8"	4-1/2"	5-3/8"	Black	Smooth	#8 FH	.28	10 ea
K336355	K336355-1	5-1/2"	6-3/4"	5-3/8"	6-1/8"	Black	Smooth	#8 FH	.32	10 ea
K336357	K336357-1	5-1/2"	6-3/4"	5-3/8"	6-1/8"	Black	Textured	#8 FH	.32	10 ea
K336365	K336365-1	6-1/2"	8-1/8"	6-1/2"	7-3/8"	Black	Smooth	#8 FH	.41	10 ea
K336367	K336367-1	6-1/2"	8-1/8"	6-1/2"	7-3/8"	Black	Textured	#8 FH	.42	10 ea
K336385	K336385-1	8-5/16"	9-7/8"	8-1/4"	8-15/16"	Black	Smooth	#8 FH	.55	10 ea
K336387	K336387-1	8-5/16"	9-7/8"	8-1/4"	8-15/16"	Black	Textured	#8 FH	.56	10 ea

The Sea-lect Designs Quarter Turn Deck Plate w/ Internal Collar is molded with a collar on the bottom to hold deck plate bags or other round containers. Use silicone sealant on hull or deck surface when installing the deck plate. Lubricate with Teflon grease, Vaseline or 303 aerospace protectant and clean with hot, soapy water. Note: Avoid contact with acetone or strong solvents.



QUARTER-TURN DECK PLATE WITH INTERNAL COLLAR KIT

Injection Molded ABS/Polycarbonate

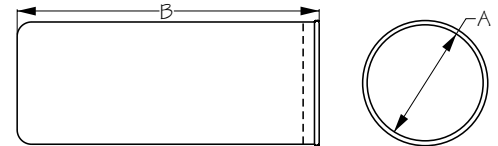


Bulk	Display	Parts Included	Wt.(lb.)	Std. Pack
n/a	K336345-9	4" Quarter-turn deck plate w/ internal collar (1) 8-32 x 3/4" PH (6) 8-32 Nyloc nut (6) #8 Flat Washer (6)	.50	10 ea
n/a	K336355-9	5" Quarter-turn deck plate w/ internal collar (1) 8-32 x 3/4" PH (6) 8-32 Nyloc nut (6) #8 Flat Washer (6)	.55	10 ea
n/a	K336365-9	6" Quarter-turn deck plate w/ internal collar (1) 8-32 x 3/4" PH (6) 8-32 Nyloc nut (6) #8 Flat Washer (6)	.65	10 ea
n/a	K336385-9	8" Quarter-turn deck plate w/ internal collar (1) 8-32 x 3/4" PH (6) 8-32 Nyloc nut (6) #8 Flat Washer (6)	.85	10 ea



DECK PLATE BAG

Nylon/Stainless Steel



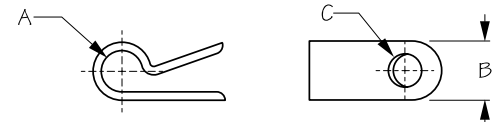
Bulk	Display	A	B	Wt.(lb.)	Std. Pack
K337149R	K337149R-1	4"	10"	.12	10 ea
K337159R	K337159R-1	5"	10"	.14	10 ea
K337169R	K337169R-1	6"	10"	.16	10 ea
K337189R	K337189R-1	8"	12"	.18	10 ea

Designed for use with our Screw Out Deck Plates w/ Internal Collar; 4" fits K33714X series, 5" fits K33715X series and 6" fits K33716X series. A drawstring bag closure keeps items inside the bag when removed from the deck plate.



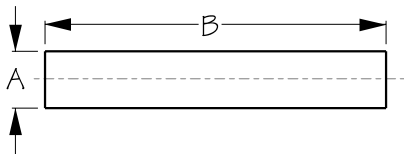
UL CABLE CLAMP

Injection Molded Nylon



Bulk	Display	Color	A	B	C	Wt.(lb.)	Std. Pack
K428231	n/a	Black	1/8"	3/8"	3/16"	.01	1 bag
n/a	K428231-2	Black	1/8"	3/8"	3/16"	.01	10 sets
K428232	n/a	Black	3/16"	3/8"	3/16"	.01	1 bag
n/a	K428232-2	Black	3/16"	3/8"	3/16"	.01	10 sets
K428233	n/a	Black	1/4"	3/8"	3/16"	.01	1 bag
n/a	K428233-2	Black	1/4"	3/8"	3/16"	.01	10 sets

Bulk Packs Include: (100) Cable Clamps. Display Sets Include: (25) Cable Clamps.



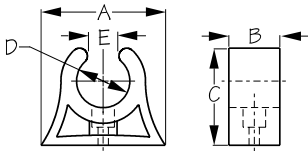
HEAT SHRINK

Polyolefin



Bulk	Display	A (Dia.)	B (Length)	Pieces	Wt.(lb.)	Std. Pack
n/a	K429516-1	1/4"	3"	6	.03	10 sets
n/a	K429536-1	3/8"	3"	6	.03	10 sets
n/a	K429556-1	1/2"	3"	6	.03	10 sets

⚠ WARNING: Cancer and Reproductive Harm - www.P65Warnings.ca.gov



POLE STORAGE CLIP

Injection Molded TPE



Bulk	Display	A	B	C	D	E	Fastener	Wt.(lb.)	Std. Pack
K491341	K491341-1	1-1/4"	7/16"	15/16"	1/2"	5/16"	#8 PH	.01	10 ea / 10 pr
K491343	K491343-1	1-1/2"	7/16"	1-1/16"	5/8"	3/8"	#8 PH	.01	10 ea / 10 pr
K491345	K491345-1	1-3/4"	3/4"	1-1/4"	3/4"	1/2"	#8 PH	.02	10 ea / 10 pr
K491347	K491347-1	1-15/16"	13/16"	1-1/2"	7/8"	9/16"	#8 PH	.03	10 ea / 10 pr
K491349	K491349-1	2-1/4"	3/4"	1-5/8"	1"	5/8"	#8 PH	.03	10 ea / 10 pr
K491351	K491351-1	2-15/16"	3/4"	2-1/8"	1-1/4"	13/16"	#8 PH	.08	10 ea / 10 pr
K491353	K491353-1	3-5/16"	3/4"	2-1/2"	1-1/2"	15/16"	#8 PH	.09	10 ea / 10 pr

Pole Storage Clips are available in sizes from 1/2" to 1-1/2". Item # K491351 is most commonly used for paddles.

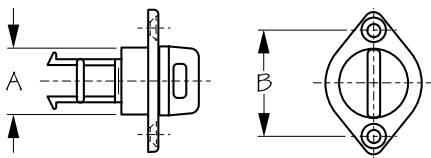


POLE STORAGE CLIP KIT

Injection Molded TPE



Bulk	Display	Parts Included	Wt.(lb.)	Std. Pack
n/a	K491351-9	Pole storage clip 1-1/4" (2) 8-32 X 1" PH (4) 8-32 Nyloc nut (4) #8 Flat washer (4) #8 Well nut (4)	.10	10 ea



DRAIN PLUG

Injection Molded Nylon



Bulk	Display	A	B	Fastener	Wt.(lb.)	Std. Pack
K520010	K520010-1	1"	1-1/2"	#10 OH	.03	10 ea
K520010FG	K520010FG-1	Foam Gasket for K520010 Drain Plug & Base			.01	100 ea / 10 pr
K520021	K520021-1	Replacement Plug for K520010 Base			.01	10 ea / 10 pr

This Drain Plug is designed with a molded-in recess in the base, thus trapping the sealant in place and providing a more watertight seal. Replacement drain plug (K520021) fits most boats with a threading molded into hull (Dagger, Liquidlogic, etc.).



DRAIN PLUG KIT

Injection Molded Nylon

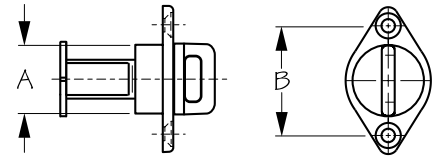


Bulk	Display	Parts Included	Wt.(lb.)	Std. Pack
n/a	K520010-9	Drain plug and base (1) 10-32 X 1" OH (2) 10-32 Nyloc nut (2) #10 Flat washer (2) #10 Well nut (2)	.05	10 ea



DRAIN PLUG

Injection Molded Nylon



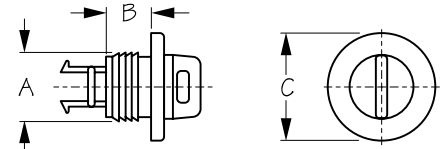
Bulk	Display	A	B	Color	Fastener	Wt.(lb.)	Std. Pack
K520015	K520015-1	1"	1-9/16"	Black	#10 PH	.03	10 ea
K520015W	n/a	1"	1-9/16"	White	#10 PH	.03	10 ea
K520016	K520016-1	Replacement Plug for K520015 Base			Black	.01	10 ea / 10 pr
K520015FG	K520015FG-1	Foam Gasket for K520015 Drain Plug & Base			Black	.01	100 ea / 10 pr

This Drain Plug is designed with a molded-in recess in the base, thus trapping the sealant in place and providing a more watertight seal. Fine thread design (see replacement fit list online).



DRAIN PLUG

Injection Molded Nylon



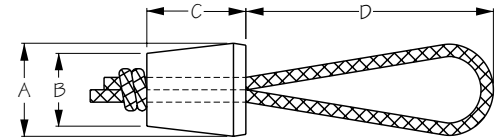
Bulk	Display	A	B	C	Fastener	Wt.(lb.)	Std. Pack
K520030	K520030-1	1"	11/16"	1-11/16"	None	.04	10 ea
K520021	K520021-1	Replacement Plug for K520030 Base				.01	10 ea / 10 pr

Designed to fit securely in a 1" hole without the use of fasteners. The ridges on the body of the Drain Plug are designed to keep the plug in place. Sealant should be applied prior to installation to make a watertight seal.



SCUPPER PLUGS

EPDM Rubber



Bulk	Display	A	B	C	D	Wt.(lb.)	Std. Pack
K520111	K520111-1	3/4"	1/2"	1"	2-1/2"	.02	10 ea / 10 pr
K520112	K520112-1	3/4"	5/8"	1"	2-1/2"	.03	10 ea / 10 pr
K520113	K520113-1	15/16"	11/16"	1"	2-1/2"	.05	10 ea / 10 pr
K520114	K520114-1	1"	3/4"	1"	2-1/2"	.07	10 ea / 10 pr
K520115	K520115-1	1-1/16"	7/8"	1"	2-1/2"	.09	10 ea / 10 pr
K520116	K520116-1	1-1/4"	1"	1"	2-1/2"	.11	10 ea / 10 pr
K520117	K520117-1	1-1/2"	1-1/8"	1"	2-1/2"	.13	10 ea / 10 pr
K520118	K520118-1	1-5/8"	1-5/16"	1"	2-1/2"	.15	10 ea
K520119	K520119-1	1-3/4"	1-1/2"	1"	2-1/2"	.17	10 ea
K520120	K520120-1	2"	1-5/8"	1"	2-1/2"	.19	10 ea
K520121	K520121-1	2-1/4"	1-15/16"	1"	2-1/2"	.21	10 ea
K520122	K520122-1	2-1/2"	2-1/8"	1"	2-1/2"	.23	10 ea
K520123	K520123-1	2-5/8"	2-1/4"	1"	2-1/2"	.25	10 ea



WARNING: Cancer and Reproductive Harm - www.P65Warnings.ca.gov



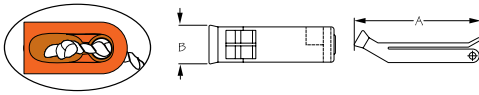
RETRACTABLE TOOL LEASH

Chrome Plated Zinc/Nylon

Bulk	Display	Wt.(lb.)	Std. Pack
n/a	K567015-1	.10	10

For keeping small snips, scissors, or forceps close at hand and out of the way.

WARNING: Cancer and Reproductive Harm - www.P65Warnings.ca.gov



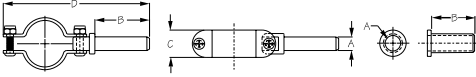
LIFE JACKET WHISTLE

Injection Molded Polypropylene



Bulk	Display	Color	Lanyard Included	A	B	Wt.(lb.)	Std. Pack
K571260	K571260-1	Orange	Only with display packaging	2-3/4"	7/8"	.02	10 ea

A 36" lanyard is included with display packaging only. Duotone whistle has no moving parts or balls that jam or corrode.



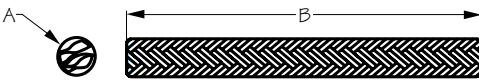
CLAMP-ON OARLOCKS

Zinc Plated Steel



Bulk	Display	A	B	C	D	Wt.(lb.)	Std. Pack
K582059	n/a	1/2"	1-9/16"	n/a	n/a	.02	10 ea
K582060	n/a	1/2"	2"	1"	5-3/8"	.82	10 ea

Oarlock Bushing (K582059) needed to increase diameter size of oarlocks (K582060).

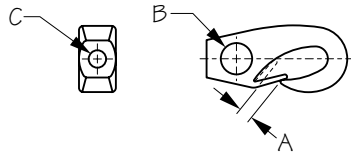


UTILITY DECK LINE

Polyester



Bulk	Display	A (Dia.)	B (Length)	Color	Wt.(lb.)	Std. Pack
K615567BK	K615567BK-1	3/16"	1000'/30'	Black	9.60 / 2.70	1 spool / 10 ea

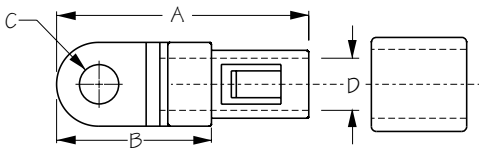


BUNGEE CLIP

Injection Molded Nylon



Bulk	Display	A	B	C	Color	Wt.(lb.)	Std. Pack
K652061	K652061-1	1/4"	7/16"	1/4"	Black	.02	10 ea / 10 pr
K652081	n/a	5/16"	9/16"	5/16"	Black	.02	10 ea

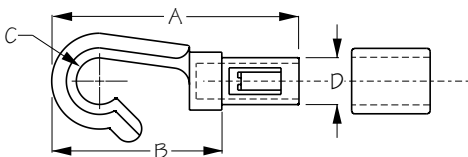


BUNGEE TERMINAL END W/ SLEEVE

Injection Molded Acetal



Bulk	Display	A	B	C	Bungee Size	Wt.(lb.)	Std. Pack
K653161	K653161-1	1-1/4"	1/2"	3/16"	1/4"	.02	10 ea / 10 pr

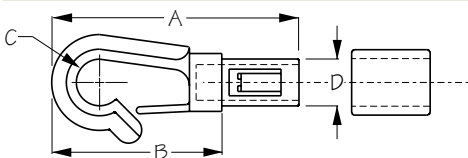


OPEN BUNGEE HOOK W/ SLEEVE

Injection Molded Acetal



Bulk	Display	A	B	C	Bungee Size	Wt.(lb.)	Std. Pack
K653261	K653261-1	2"	1"	3/16"	1/4"	.02	10 ea / 10 pr



LOCKING BUNGEE HOOK W/ SLEEVE

Injection Molded Acetal

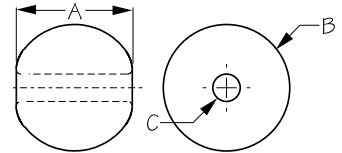


Bulk	Display	A	B	C	Bungee Size	Wt.(lb.)	Std. Pack
K653361	K653361-1	2"	1"	3/8"	1/4"	.02	10 ea / 10 pr



CLAMCLEAT® SHOCKCORD BALL

Injection Molded Polypropylene



Bulk	Display	A	B	C (Line Size)	Wt.(lb.)	Std. Pack
K654020	K654020-1	3/4"	3/4"	5-7mm	.01	10 ea



POLYPRO BUNGEE CORD

Natural Rubber with Polyethylene Cover

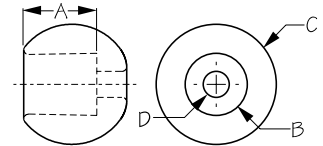


Bulk	Display	A (Dia.)	B (Length)	Color	Wt.(lb.)	Std. Pack
K655046BK	n/a	1/8"	500'	Black	4.20	1 spool
K655066BK	n/a	3/16"	500'	Black	5.40	1 spool
K655067BK	n/a	3/16"	1000'	Black	9.00	1 spool
K655086BK	K655086BK-1	1/4"	500'/20'	Black	9.30 / .38	1 spool / 10 ea
K655087BK	n/a	1/4"	1000'	Black	18.81	1 spool



CLAMCLEAT® SHOCKCORD TOGGLE BALL

Injection Molded Polypropylene



Bulk	Display	A	B	C	D (Line Size)	Wt.(lb.)	Std. Pack
K655140	K655140-1	5/16"	5/16"	11/16"	4 mm	.01	10 ea
K655160	K655160-1	9/16"	1/2"	7/8"	6 mm	.01	10 ea
K655180	K655180-1	11/16"	9/16"	1-1/4"	8 mm	.01	10 ea



PADDLE & POLE KEEPER KIT

Injection Molded Nylon/Polypro



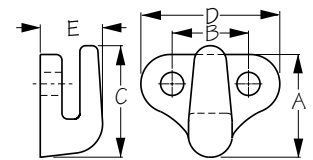
Bulk	Display	Parts Included	Wt.(lb.)	Std. Pack
n/a	K671400-9	Bungee terminal end w/ sleeve (4) Lashing hook one hole (2) 1/4" bungee - 18" (2) 10-32 X 3/4" PH (6) 10-32 Nyloc nuts (6) #10 Flat washer (6) Trifold pop rivets (6)	.30	5 ea

Kit Includes: (2) 18" Deck Bungee sections, (4) Bungee Terminal Ends w/ Sleeve, (2) Lashing Hook - One Hole, and (1) Mounting Fastener Pack with Easy Install Instructions.



LASHING HOOK - TWO HOLE (LARGE)

Injection Molded Nylon



Bulk	Display	A	B	C	D	E	Color	Fastener	Wt.(lb.)	Std. Pack
K671415	K671415-1	7/8"	5/8"	15/16"	1-3/16"	9/16"	Black	#8 PH	.01	100 ea / 10 sets

Display Sets Include: (6) Lashing Hooks. Our recommended two hole lashing hook!

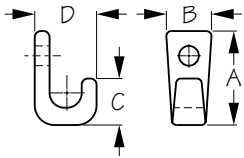


LASHING HOOK - TWO HOLE (LARGE) KIT

Injection Molded Nylon



Bulk	Display	Parts Included	Wt.(lb.)	Std. Pack
n/a	K671415-9	Lashing hook-two hole (2) 8-32 X 1" PH (4) 8-32 Nyloc nut (4) #8 Flat washer Well nut (4)	(4) #8 .04	10 ea



LASHING HOOK - ONE HOLE

Injection Molded Nylon



Bulk	Display	A	B	C	D	Color	Fastener	Wt.(lb.)	Std. Pack
K671425	K671425-1	15/16"	7/16"	7/16"	5/8"	Black	#8 PH	.01	100 ea / 10 sets

Display Sets Include: (6) Lashing Hooks. Our standard, best-selling "J" hook!

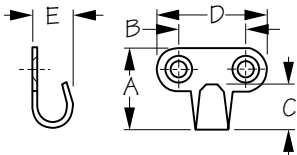


LASHING HOOK - ONE HOLE KIT

Injection Molded Nylon



Bulk	Display	Parts Included	Wt.(lb.)	Std. Pack
n/a	K671425-9	Lashing hook one hole (2) 8-32 X 1" PH (4) 8-32 Nyloc nut (4) #8 Flat washer (4) #8 Well nut (4)	.02	10 ea

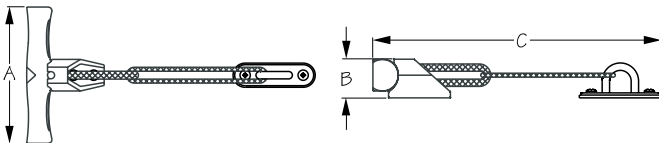


HAMMOCK HOOK

Stamped 304 Stainless Steel



Bulk	Display	A	B	C	D	E	Fastener	Wt.(lb.)	Std. Pack
K671460	n/a	15/16"	3/4"	1/2"	1-1/4"	1/2"	#8 OH	.02	10 ea

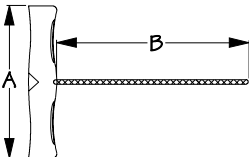


KAYAK CARRYING HANDLE SET

Injection Molded Polypropylene



Bulk	Display	A	B	C	Wt.(lb.)	Std. Pack
n/a	K736400-1	4-1/4"	1-3/16"	8-15/16"	.20	10 ea
K736410	n/a	Handle Base Only			.03	10 ea



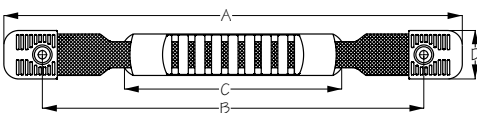
KAYAK CARRYING HANDLE & INSERT

Injection Molded Polypropylene



Bulk	Display	A	B	Wt.(lb.)	Std. Pack
K736451	K736451-1	4-1/4"	7"	.05	100 ea / 10 ea
K736450	n/a	Handle without insert		.03	100 ea

Display pack include a 18" handle cord. Cap has insert to accommodate custom logo for large volume orders.



WEBBING HANDLE W/ CAPS

Injection Molded Nylon/Webbing



Bulk	Display	A	B	C	D	E	Fastener	Wt.(lb.)	Std. Pack
K736462	K736462-1	11-1/2"	10"	5"	1"	5-10"	#10 PH	.11	10 ea
K736463	K736463-1	15"	13-1/2"	5"	1"	8-13"	#10 PH	.13	10 ea



WEBBING HANDLE W/ CAPS KIT

Injection Molded Nylon/Webbing



Bulk	Display	Parts Included	Wt.(lb.)	Std. Pack
n/a	K736462-9	Webbing handle (1) End caps (2) 10-32 X 1" PH (2) 10-32 Nyloc nut (2) #10 Fender washer (2)	.13	10 ea

Sea-Lect Designs



PULL-UP STRAP HANDLE KIT

Nylon/Stainless Steel



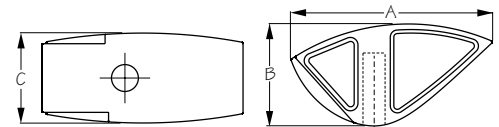
Bulk	Display	Parts Included	Wt.(lb.)	Std. Pack
n/a	K736470-9	Webbing w/ grab loop - 74" X 1" (1) 1" Webbing slide (1) Stainless steel eye strap (1) 10-32 X 3/4" OH (2) 10-32 Nyloc nut (2) #10 Fender Washer	.75	5 ea

Whether you are looking to fish from a standing position on your Sit On Top kayak, or just need a little assistance getting out of the boat, the Pull Up Strap Handle Kit can be easily installed on any kayak.



KAYAK DECK LINE GUIDE - ASYMMETRICAL

Injection Molded Nylon



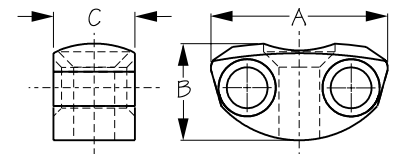
Bulk	Display	A	B	C	Wt.(lb.)	Std. Pack
K736500	n/a	1-3/8"	11/16"	5/8"	.01	100 ea

Display Sets Include: (6) Deck Line Guides.



KAYAK DECK LINE GUIDE - SMALL

Injection Molded Nylon



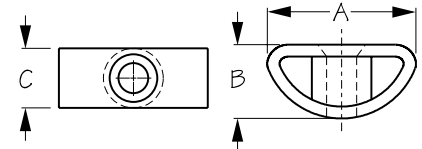
Bulk	Display	A	B	C	Fastener	Wt.(lb.)	Std. Pack
K736510	K736510-1	1-1/16"	9/16"	1/2"	#10 OH	.01	100 ea / 10 sets

Display Sets Include: (6) Deck Line Guides.



KAYAK DECK LINE GUIDE - LARGE

Injection Molded Nylon



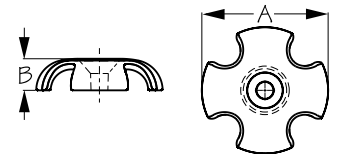
Bulk	Display	A	B	C	Fastener	Wt.(lb.)	Std. Pack
K736520	K736520-1	1-1/4"	5/8"	1/2"	#10 OH	.01	100 ea / 10 sets

Display Sets Include: (6) Deck Line Guides.



KAYAK DECK LINE GUIDE - SLOTTED ROUND

Injection Molded Fiberglass/Nylon



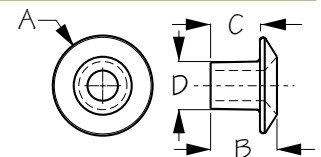
Bulk	Display	A	B	Fastener	Wt.(lb.)	Std. Pack
K736530	K736530-1	1-1/2"	3/8"	#10 OH	.01	100 ea / 10 sets

Display Sets Include: (6) Deck Line Guides.



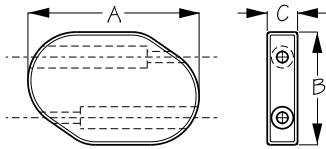
KAYAK DECK FITTING - OPEN ROUND

Injection Molded Polypropylene



Bulk	Display	A	B	C	D	Fastener	Wt.(lb.)	Std. Pack
K736537	K736537-1	3/4"	1/2"	3/8"	7/16"	#10 OH	.01	100 ea / 10 sets

Display Sets Include: (6) Deck Fittings.



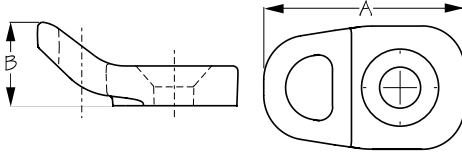
KAYAK DECK FITTING - BUNGEE BLOCK

Injection Molded Polypropylene Fiberglass/Nylon



Bulk	Display	A	B	C	Wt.(lb.)	Std. Pack
K736540	K736540-1	1-7/16"	15/16"	1/4"	.05	100 ea / 10 sets

Display Sets Include: (6) Bungee Blocks.



KAYAK DECK FITTING - SINGLE LOOP

Injection Molded Nylon



Bulk	Display	A	B	Fastener	Wt.(lb.)	Std. Pack
K736550	K736550-1	1-1/4"	1/2"	#10 OH	.01	100 ea / 10 sets

Display Sets Include: (6) Deck Fittings.

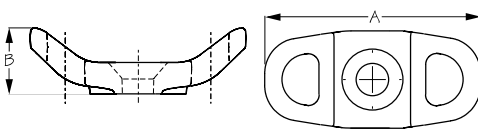


KAYAK DECK FITTING - SINGLE LOOP KIT

Injection Molded Nylon



Bulk	Display	Parts Included	Wt.(lb.)	Std. Pack
n/a	K736550-9	Kayak deck fitting (2) 10-32 X 1" OH (2) 10-32 Nyloc nut (2) #10 Flat washer (2) #10 Well nut (2)	.02	10 ea



KAYAK DECK FITTING - DOUBLE LOOP

Injection Molded Nylon



Bulk	Display	A	B	Fastener	Wt.(lb.)	Std. Pack
K736560	K736560-1	1-5/8"	1/2"	#10 OH	.01	100 ea / 10 sets

Display Sets Include: (6) Deck Fittings.



KAYAK DECK FITTING - DOUBLE LOOP KIT

Injection Molded Nylon



Bulk	Display	Parts Included	Wt.(lb.)	Std. Pack
n/a	K736560-9	Kayak Deck fitting (2) 10-32 X 1" OH (2) 10-32 Nyloc nut (2) #10 Flat washer (2) #10 Well nut (2)	.02	10 ea

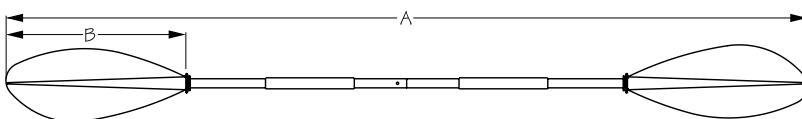


DOUBLE LOOP TRACK KIT

Injection Molded Nylon/304 Stainless Steel



Bulk	Display	Parts Included	Wt.(lb.)	Std. Pack
n/a	K736560T-9	Double Loop (2) 8-32 x 1/2" OH (2) 8-32 Track Fitting (2)	.08	10 ea



KAYAK PADDLE

Injection Molded Nylon/Aluminum

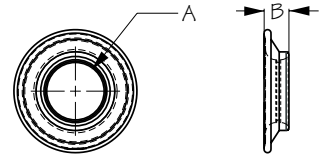


Bulk	Display	A	B	Wt.(lb.)	Std. Pack
n/a	K737100-1	220cm	18"	2.40	1 ea
n/a	K737150-1	230cm	18"	2.55	1 ea



KAYAK PADDLE DRIP RINGS

Injection Molded TPE

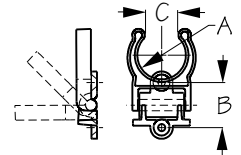


Bulk	Display	A	B	Wt.(lb.)	Std. Pack
K737290	K737290-1	1"	7/16"	.20	10 ea / 10 pr



KAYAK FOLDING PADDLE CLIP

Injection Molded Nylon



Bulk	Display	A	B	C	Fastener	Wt.(lb.)	Std. Pack
K737345	K737345-1	3/4"	1"	13/32"	#8 OH	.02	10 ea / 10 pr
K737349	K737349-1	1"	1"	5/8"	#8 OH	.02	10 ea / 10 pr
K737350	K737350-1	1-1/8"	1"	25/32"	#8 OH	.03	10 ea / 10 pr
K737351	K737351-1	1-1/4"	1"	13/16"	#8 OH	.03	10 ea / 10 pr
K737353	K737353-1	1-1/2"	1"	15/16"	#8 OH	.04	10 ea / 10 pr
K737355	K737355-1	1-3/4"	1"	1-5/32"	#8 OH	.04	10 ea / 10 pr
K737357	K737357-1	2"	1"	1-9/32"	#8 OH	.04	10 ea / 10 pr
K737399	n/a	n/a	1"		#8 OH	.01	10 ea

Kayak Folding Paddle Clips are available in sizes from 3/4" to 2". K737350 is most commonly used for paddles.



KAYAK FOLDING PADDLE CLIP KIT

Injection Molded Nylon

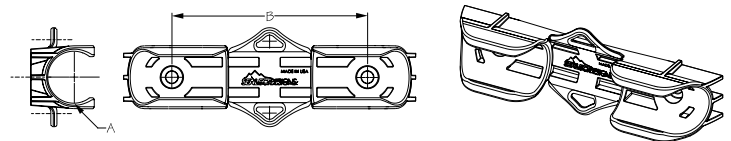


Bulk	Display	Parts Included	Wt.(lb.)	Std. Pack
n/a	K737350-9	Folding paddle clip 1-1/8" (2) 8-32 X 3/4" OH (4) 8-32 Nyloc nut (4) #8 Flat washer (4) #8 Well nut (4)	.05	10 ea



KAYAK PADDLE CLIP

Injection Molded Nylon



Bulk	Display	A	B	Fastener	Wt.(lb.)	Std. Pack
K737361	n/a	1-1/8"	4"	1/4" OH	.07	10 ea

One piece paddle clip allows for the simple one handed storage of your paddle, anti snag ramps prevent line getting stuck under the clip when not in use, and leash attachment points for securing a paddle leash.



PERFORMANCE PADDLE CLIP KIT

Injection Molded Nylon



Bulk	Display	Parts Included	Wt.(lb.)	Std. Pack
n/a	K737361-9	Paddle Clip (1) 10-32 X 1" PH (2) 10-32 Nyloc Nut (2) #10 Flat Washer (2) #10 Well Nut (2)	.12	10 ea

One piece paddle clip allows for the simple one handed storage of your paddle, anti snag ramps prevent line getting stuck under the clip when not in use, and leash attachment points for securing a paddle leash.

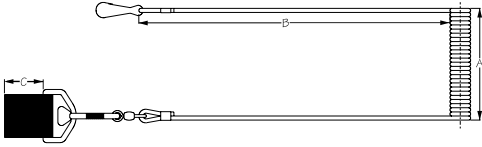
PADDLE CLIP & PREMIUM LEASH KIT

Injection Molded Nylon/304 Stainless Steel



Bulk	Display	Parts Included	Wt.(lb.)	Std. Pack
n/a	K737366-9	Paddle Clip (1) Premium Leash (1) Hook and Loop Paddle Retainer (1) Fastener pack (1)	1.10	10 ea

Kit comes with everything that you need to keep your paddle secure while on the water. Hook and loop retainer fits between ears in clip and leash attachment points allow you to affix leash directly to clip.



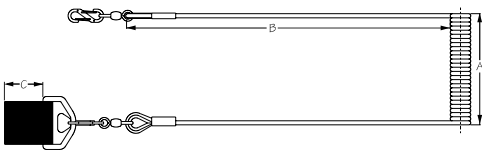
UTILITY PADDLE LEASH

Delrin/Nylon/304 Stainless Steel



Bulk	Display	A	B	C	Wt.(lb.)	Std. Pack
n/a	K737370-1	48"	12"	1-1/8"	.12	10 ea

Focus on landing that tournament winning fish and not managing your paddle. Comes with leash and paddle strap.



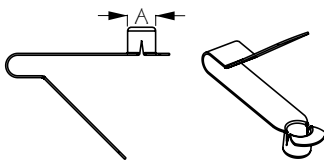
PREMIUM PADDLE LEASH

Delrin/Nylon/304 Stainless Steel



Bulk	Display	A	B	C	Wt.(lb.)	Std. Pack
n/a	K737375-1	48"	12"	1-1/8"	.15	10 ea

Focus on landing that tournament winning fish and not managing your paddle. Comes with leash and paddle strap.

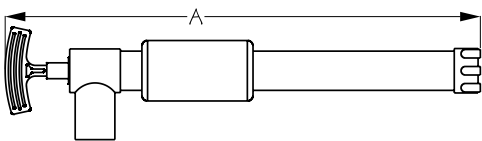


KAYAK PADDLE SNAP BUTTON

Stamped 304 Stainless Steel



Bulk	Display	Paddle Button Diameter	Wt.(lb.)	Std. Pack
K737420	K737420-1	5/16"	.02	10 ea

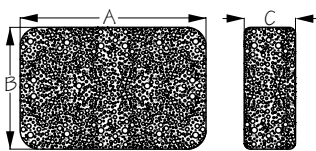


MANUAL BILGE PUMP

Injection Molded Nylon



Bulk	Display	A	SPG	GPM	Wt.(lb.)	Std. Pack
n/a	K737500-1	21"	10	6	1.03	5 ea



BOAT SPONGE

Synhtetic Sponge



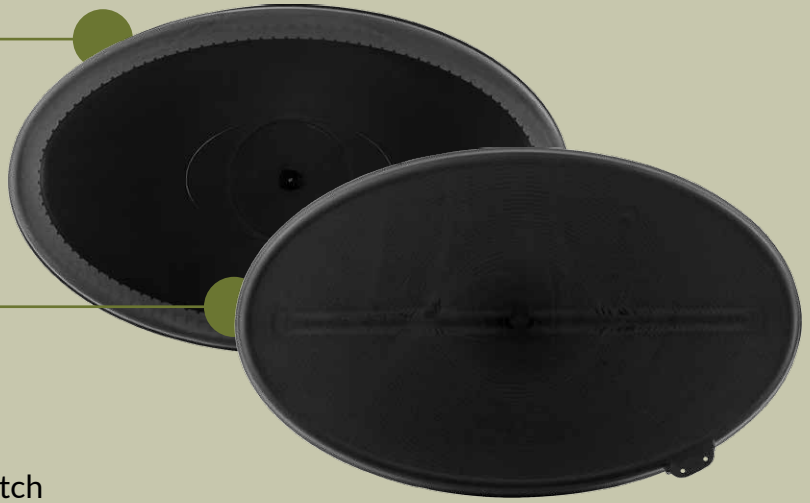
Bulk	Display	A	B	C	Wt.(lb.)	Std. Pack
K737550	K737550-1	7"	4-1/2"	2"	.25	10 ea

PERFORMANCE

- Superior Watertight Seal
- Hard Dome Insert (UV Resistant)
- Buoyant Material
- Stylish Matte Finish
- Easy to Attach/Remove

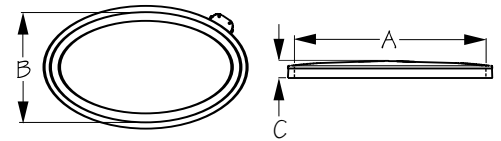
RECREATIONAL

- UV Resistant Rubber Design
- Pre-Stretched, Non-Sagging Fit
- Buoyant Material
- Economically Priced
- Commonly Used For Round Day Hatch



KAYAK HATCH COVERS - NARROW OVAL

Injection Molded Polymer

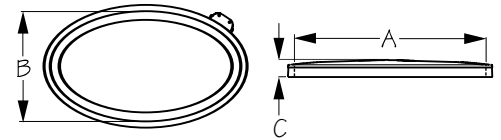


Bulk	Display	Description	A	B	C	Style	Wt.(lb.)	Std. Pack
n/a	K745250-1	Lid Only	18-3/8"	2"	11"	Performance	1.55	1 ea
K745259	K745259-1	Lid & Ring	18-3/8"	2"	11"	Performance	2.3	1 ea
n/a	K745350-1	Lid Only	18-3/8"	2"	11"	Recreational	1.55	1 ea
K745359	K745359-1	Lid & Ring	18-3/8"	2"	11"	Recreational	2.3	1 ea
K745155	K745155-1	Ring Only	18-3/8"	2"	11"	n/a	.75	1 ea

Compatible with Kayak Sport* 44cm/26cm oval hatch.

KAYAK HATCH COVERS - WIDE OVAL

Injection Molded Polymer

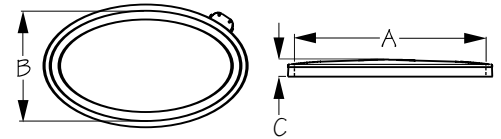


Bulk	Display	Description	A	B	C	Style	Wt.(lb.)	Std. Pack
n/a	K745260-1	Lid Only	17-5/8"	2"	12-7/8"	Performance	1.7	1 ea
K745269	K745269-1	Lid & Ring	17-5/8"	2"	12-7/8"	Performance	2.5	1 ea
n/a	K745360-1	Lid Only	17-5/8"	2"	12-7/8"	Recreational	1.7	1 ea
K745369	K745369-1	Lid & Ring	17-5/8"	2"	12-7/8"	Recreational	2.5	1 ea
K745165	n/a	Ring Only	17-5/8"	2"	12-7/8"	n/a	.80	1 ea

Compatible with Kayak Sport* 42cm/30cm oval hatch.

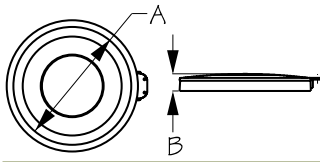
KAYAK HATCH COVERS - VCP OVAL

Injection Molded Polymer



Bulk	Display	Description	A	B	C	Style	Wt.(lb.)	Std. Pack
n/a	K745270-1	Lid Only	17-1/4"	2"	10"	Performance	1.3	1 ea
K745279	K745279-1	Lid & Ring	17-1/4"	2"	10"	Performance	2.05	1 ea
n/a	K745370-1	Lid Only	17-1/4"	2"	10"	Recreational	1.3	1 ea
K745379	K745379-1	Lid & Ring	17-1/4"	2"	10"	Recreational	2.05	1 ea
K745175	n/a	Ring Only	17-1/4"	2"	10"	n/a	.75	1 ea

Compatible with Valley Canoe Products* (VCP) oval hatch.



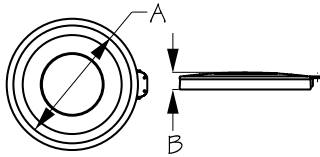
KAYAK HATCH COVERS - 4" ROUND

Injection Molded Polymer



Bulk	Display	Description	A	B	C	Style	Wt.(lb.)	Std. Pack
n/a	K746140-1	Lid Only	4-7/16"	1-3/8"	n/a	Performance	.25	1 ea
K746148	K746148-1	Lid & Ring w/ Collar	4-7/16"	1-3/8"	n/a	Performance	.5	1 ea
K746149	K746149-1	Lid & Ring	4-7/16"	1-3/8"	n/a	Performance	.5	1 ea
n/a	K746240-1	Lid Only	4-7/16"	1-3/8"	n/a	Recreational	.25	1 ea
K746248	K746248-1	Lid & Ring w/ Collar	4-7/16"	1-3/8"	n/a	Recreational	.5	1 ea
K746249	K746249-1	Lid & Ring	4-7/16"	1-3/8"	n/a	Recreational	.5	1 ea
K746044	K746044-1	Ring Only w/ Collar	4-7/16"	1-3/8"	n/a	n/a	.25	1 ea
K746045	K746045-1	Ring Only	4-7/16"	1-3/8"	n/a	n/a	.25	1 ea

Compatible with Kayak Sport* 10cm round hatch.



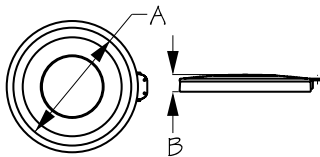
KAYAK HATCH COVERS - 6" ROUND

Injection Molded Polymer



Bulk	Display	Description	A	B	C	Style	Wt.(lb.)	Std. Pack
n/a	K746160-1	Lid Only	6-1/2"	1-3/8"	n/a	Performance	.3	1 ea
K746168	K746168-1	Lid & Ring w/ Collar	6-1/2"	1-3/8"	n/a	Performance	.65	1 ea
K746169	K746169-1	Lid & Ring	6-1/2"	1-3/8"	n/a	Performance	.65	1 ea
n/a	K746260-1	Lid Only	6-1/2"	1-3/8"	n/a	Recreational	.3	1 ea
K746268	K746268-1	Lid & Ring w/ Collar	6-1/2"	1-3/8"	n/a	Recreational	.65	1 ea
K746269	K746269-1	Lid & Ring	6-1/2"	1-3/8"	n/a	Recreational	.65	1 ea
K746064	K746064-1	Ring Only w/ Collar	6-1/2"	1-3/8"	n/a	n/a	.35	1 ea
K746065	K746065-1	Ring Only	6-1/2"	1-3/8"	n/a	n/a	.35	1 ea

Compatible with Kayak Sport* 15cm round hatch.



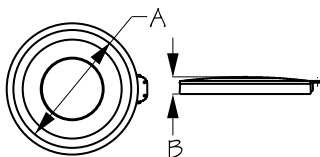
KAYAK HATCH COVERS - 8" ROUND

Injection Molded Polymer



Bulk	Display	Description	A	B	C	Style	Wt.(lb.)	Std. Pack
n/a	K746180-1	Lid Only	8"	1-3/8"	n/a	Performance	.55	1 ea
K746189	K746189-1	Lid & Ring	8"	1-3/8"	n/a	Performance	.9	1 ea
n/a	K746280-1	Lid Only	8"	1-3/8"	n/a	Recreational	.55	1 ea
K746289	K746289-1	Lid & Ring	8"	1-3/8"	n/a	Recreational	.9	1 ea
K746085	K746085-1	Ring Only	8"	1-3/8"	n/a	n/a	.35	1 ea

Compatible with Valley Canoe Products* (VCP) round day hatch.



KAYAK HATCH COVERS - 10" ROUND

Injection Molded Polymer



Bulk	Display	Description	A	B	C	Style	Wt.(lb.)	Std. Pack
n/a	K746200-1	Lid Only	10"	1-3/8"	n/a	Performance	.7	1 ea
K746209	K746209-1	Lid & Ring	10"	1-3/8"	n/a	Performance	1.1	1 ea
n/a	K746300-1	Lid Only	10"	1-3/8"	n/a	Recreational	.7	1 ea
K746309	K746309-1	Lid & Ring	10"	1-3/8"	n/a	Recreational	1.1	1 ea
K746105	K746105-1	Ring Only	10"	1-3/8"	n/a	n/a	.4	1 ea

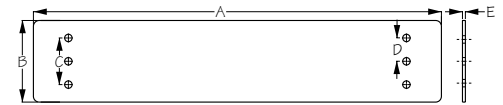
Compatible with Kayak Sport* 24cm round hatch.

*Sea-lect Designs is not affiliated with Valley Sea Kayaks and/or Kajak Sport, reference to these brands only indicates similar sizing of hatch cover products). Not recommended for rotomolded kayaks that do not have an injection molded rim bolted to the deck due to the variation in shrinkage from boat to boat when rotomolded.



KAYAK ADJUSTABLE FOOTBRACE HEIGHT ADJUSTER KIT

ABS



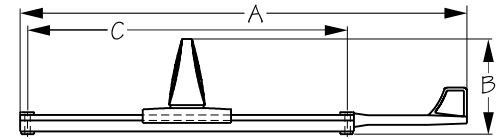
Bulk	Display	A	B	C	D	E	Wt.(lb.)	Std. Pack
n/a	K747010-1	17-1/2"	3-1/2"	2"	1"	1/8"	.25	5 ea

In cases where your foot peg makes contact with the underside of your deck, use a pair of Kayak Adjustable Footbrace Height Adjusters to move the mounting location down without the need to drill new mounting holes.



KAYAK ADJUSTABLE FOOTBRACE

Injection Molded Polypropylene Fiberglass/Nylon



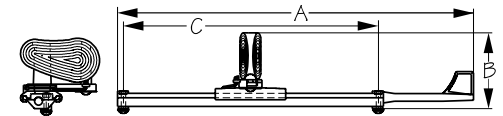
Bulk	Display	A	B	C	Flag	Rod Color	Wt.(lb.)	Std. Pack
K747100B	K747100B-1	20-1/4"	4-1/4"	14-1/2"	Standard	Black	1.40	5 pr

The Sea-lect Designs™ Kayak Adjustable Footbrace has 10" of adjustable travel with only the flip of the lever. The two mounting holes (measuring 14-1/2" apart) fit most existing footbrace patterns, and the entire unit is designed to be maintenance free and self cleaning while maintaining tremendous strength. In addition, the ergonomically designed pedals are extremely comfortable ... even with bare feet. Thru-hole mounting for easy user installation. Patent #7,168,388.



KAYAK ADJ. FOOTBRACE W/ RUDDER CONTROL

Injection Molded Polypropylene Fiberglass/Nylon



Bulk	Display	A	B	C	Flag	Rod Color	Wt.(lb.)	Std. Pack
K747200B	K747200B-1	20-1/4"	4-1/4"	14-1/2"	Standard	Black	2.00	5 pr

Our Kayak Adjustable Footbrace w/ Rudder Control offers the same great benefits as its fixed counterpart ... but you guessed it, with the added benefit of rudder control capabilities. One of the easiest footbraces to adjust while on the water, they're available with either a black or red rod.



RUDDER CONTROL UPGRADE KIT

Injection Molded Nylon

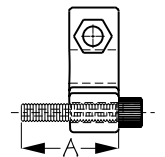
Bulk	Display	Description	Wt.(lb.)	Std. Pack
n/a	K747250-1	Rudder Control Upgrade Kit	1.10	5 sets

Kit includes left & right foot pedals as well as cable adjusters needed to upgrade a Kayak Adjustable Footbrace for use in a Rudder Control application. Simply slide off existing footpedals and slide these rudder controls pedals on and you are on your way to rudder assisted paddling.



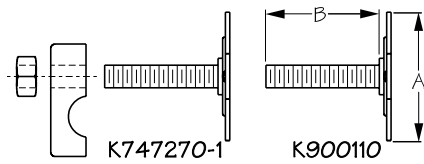
KAYAK FOOTBRACE CABLE ADJUSTER KIT

Injection Molded Polypropylene Fiberglass/Nylon/Aluminum



Bulk	Display	A (Adjustability)	Mount Type	Color	Wt.(lb.)	Std. Pack
K747260	K747260-1	1-5/16"	Thru Hull	Black	.04	10 ea / 10 pr
K747265	K747265-1	1-5/16"	Stud	Black	.04	10 ea / 10 pr

Fits all Sea-lect Designs Kayak Adjustable Footbraces w/ Rudder Control. The adjuster is great for fine tuning cable, and is available in thru-hull mount or stud mount versions.



STUD MOUNT & STUD MOUNT KIT

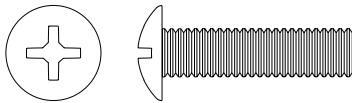
304 Stainless Steel/Nylon



Bulk	Display	A	B	Size / Thread	Wt.(lb.)	Std. Pack
K900110	n/a	1-7/8"	1-1/4"	1/4"-20	.05	100 ea
n/a	K747270-1	See Below For Kit Inclusions			.25	10 sets

When you don't want to mount your footbraces by drilling a hole through your kayak, simply fiberglass or glue on studs to act as the mounting bracket. Stud Mount Kit includes four studs, four clamps and four Nylock Nuts.

Truss Head (TH)



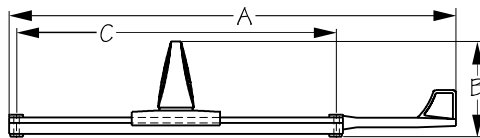
FOOT BRACE REPLACEMENT HARDWARE PACKS

18-8 Stainless Steel



Bulk	Display	Size / Thread	Head	Length	Wt.(lb.)	Std. Pack
n/a	K747280-1	1/4"-20	Truss (TH)	1-1/4"	.05	10 sets
n/a	K747285-1-1				.05	10 sets

Display Sets Include: (4) Machine Screws, (4) Nyloc Nuts & (4) Bonded Washers.



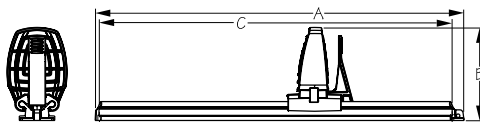
KAYAK ADJ. FOOTBRACE / LOW PROFILE

Injection Molded Polypropylene Fiberglass/Nylon



Bulk	Display	A	B	C	Flag	Rod Color	Wt.(lb.)	Std. Pack
K747300B	K747300B-1	20-1/4"	4-1/4"	14-1/2"	Standard	Black	1.30	5 pr

Enjoy the same benefits of our Kayak Adjustable Footbrace with some unique features ... 1) a new low profile foot peg which is great for sit-on-top kayaks and their open deck design, and 2) a shorter flag arm designed to provide even more versatility for fitting the layout of your kayak.



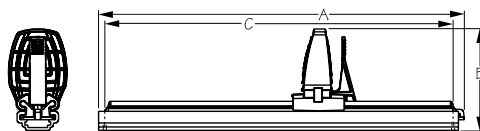
KAYAK RECREATIONAL FOOTBRACE

Injection Molded Polypropylene Fiberglass/Nylon



Bulk	Display	A	B	C	Fastener Size	Style Type	Wt.(lb.)	Std. Pack
K747510	K747510-1	15-5/8"	3-3/4"	14-1/2"	1/4"	Stud Mount	.95	5 pr
K747520	K747520-1	15-5/8"	3-3/4"	14-1/2"	1/4"	Thru Hull	.95	5 pr

New for 2014, Sea-lect Designs Kayak Recreational Footbraces are designed to be maintenance free with tremendous strength ... at a price that's attractive to everyone! With three attachment options and low profile pedal that mounts easily in most boats, this footbrace system is a dream for OEM applications (and it's a perfect option for anyone looking to replace worn-out footbraces too).



KAYAK REC FOOTBRACE W/ RUDDER CONTROL

Injection Molded Polypropylene Fiberglass/Nylon



Bulk	Display	A	B	C	D	Track Type	Wt.(lb.)	Std. Pack
K747600	K747600-1	15-5/8"	4-3/8"	14-1/2"	15-5/8"	Standard	1.55	5 pr

With the addition of a channeled track to slide in, turn our Kayak Recreational Footbrace into a rudder control footbrace. Available only with the Standard track type layout (above) for 2014.



RUDDER CABLE TUBING (SPOOL)

Nylon

Bulk	Display	Tubing Size	Spool Feet	Color	Wt.(lb.)	Std. Pack
K748010	n/a	3/16"	2000'	Black	12.8	1 spool



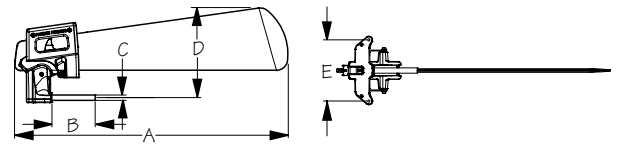
RUDDER CABLE

Stainless Steel

Bulk	Display	Cable Size	Spool Feet	Color	Wt.(lb.)	Std. Pack
K748020	n/a	1/16"	2000'	Steel	13.9	1 spool
K748022	n/a	1/16"	250'	Steel	5.5	1 spool
K748025	n/a	1/16"	500'	Steel	7.0	1 spool

TRUCOURSE™ RUDDER & FOOTBRACE KIT

Injection Molded Fiberglass/Nylon

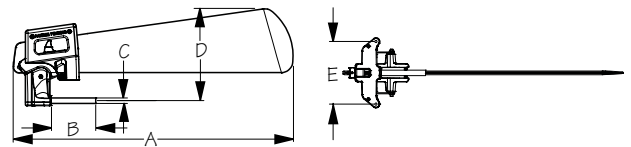


Bulk	Display	A	B	C	D	E	Wt.(lb.)	Std. Pack
n/a	K748100-3	17"	3"	3/8"	6-1/4"	4-1/4"		
n/a	K748151-1	Rudder Rigging Kit Only					.65	10 ea

Kit includes Trucourse™ Rudder (K748150-3), Kayak Adjustable Footbrace w/ Rudder Control (K747200-1) and Rudder Rigging Kit (K748151-1). Rudder Rigging Kit includes most materials needed to attach a rudder to a kayak (except gudgeons, see below). Footbrace Patent #7,168,388, Trucourse™ Rudder Patent #8,210,114.

TRUCOURSE™ RUDDER

Injection Molded Fiberglass/Nylon

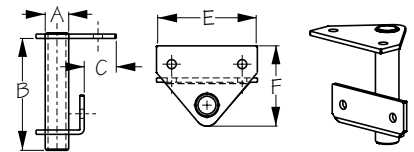


Bulk	Display	A	B	C	D	E	Wt.(lb.)	Std. Pack
K748150	n/a	17"	3"	3/8"	6-1/4"	4-1/4"	1.50	1 set
n/a	K748150-3	17"	3"	3/8"	6-1/4"	4-1/4"	1.50	1 set
K748175	K748175-1	Replacement Blade					.10	10 ea
n/a	K900139-1	Replacement Hex Key Packet					.01	10 set

The Trucourse™ Rudder allows for smooth and silent deployment of your rudder making it a favorite of kayak fishermen. Trucourse™ Rudder Patent #8,210,114.

RUDDER MOUNTING GUDGEONS (FLAT STERN)

Stainless Steel

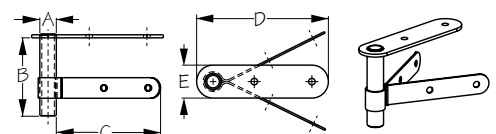


Bulk	Display	A	B	C	D	E	F	Wt.(lb.)	Std. Pack
K748200	K748200-1	3/8"	2-3/8"	11/16"	1-11/16"	2-1/8"	1-3/4"	.15	5 ea

Gudgeon needed to mount our Trucourse™ Rudder to most kayaks without an existing mounting bracket, and a flat stern.

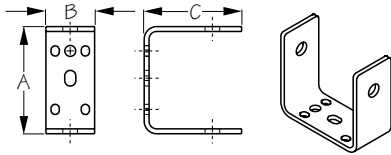
RUDDER MOUNTING GUDGEONS (POINTED STERN)

304 Stamped Stainless Steel



Bulk	Display	A	B	C	D	E	Wt.(lb.)	Std. Pack
K748250	K748250-1	3/8"	2-3/8"	3-1/4"	4"	1"	.20	5 ea

Gudgeon needed to mount our Trucourse™ Rudder to most kayaks without an existing mounting bracket, and a pointed stern.



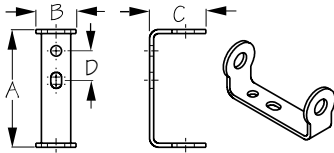
RUDDER MOUNTING GUDGEONS (UNIVERSAL BRACKET)

Stamped 304 Stainless Steel



Bulk	Display	A	B	C	Wt.(lb.)	Std. Pack
K748270	K748270-1	2-3/4"	1-1/4"	2-1/2"	.25	5 ea

Gudgeon needed to mount our Trucourse™ Rudder to most kayaks with pre-tapped mounting holes with screw inserts found on the stern of the kayak (includes Wilderness System, Necky, Ocean Kayak, Emotion, and more).



TRUCOURSE™ RUDDER GUDGEON

304 Stamped Stainless Steel



Bulk	Display	A	B	C	D	Wt.(lb.)	Std. Pack
K748280	K748280-1	2-3/4"	15/16"	1-5/16"	11/16"	.25	5 ea

Gudgeon needed to mount our Trucourse™ Rudder to kayaks with a flat stern. Fits Jackson Kayaks rudder ready hulls.



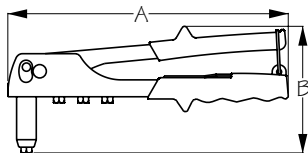
DECK BUNGEE KIT

Injection Molded Nylon/Polypro



Bulk	Display	Parts Included	Fasteners Included	Wt.(lb.)	Std. Pack
n/a	K749530-9	1/4" bungee - 11' (1) 3/8" Pad Eye (6) 8-32 X 3/4" OH (12) #8-32 Nyloc nut (12) #8 Flat washer (12)	Yes	.50	5 ea

This kit comes with everything that you need to add an additional deck bungee to any kayak. Just set your pattern, drill your holes and tie your Knots and you are ready to go.

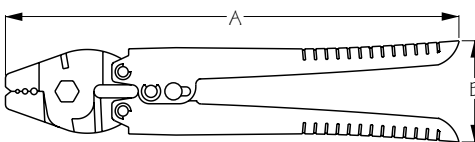


RIVET TOOL

Stamped Steel



Bulk	Display	A	B	Rivet Size Range	Wt.(lb.)	Std. Pack
n/a	K799100-1	10"	3-3/4"	3/32"-3/16"	1.00	5 ea



CUTTER/CRIMPER TOOL

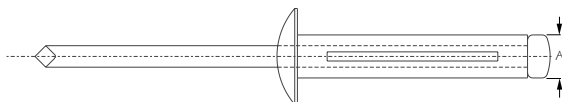
Stamped Steel



Bulk	Display	A	B	Wt.(lb.)	Std. Pack
n/a	K799150-1	10-1/4"	2-1/4"	1.00	5 ea

DOME HEAD TRI-FOLD RIVETS, 3/16" BLACK

Aluminum



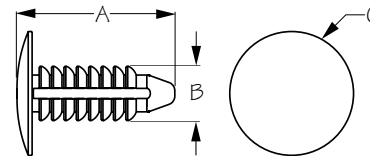
Bulk	Display	A (Hole Dia.)	Grip Range	Wt.(lb.)	Std. Pack
K799555BK	K799555BK-1	3/16"	1/32"-1/2"	.01	1 bag / 10 sets

Bulk Bags Include: (100) Tri-Fold Rivets. Display Sets Include: (10) Tri-Fold nRivets.



PINE TREE RIVET

Nylon



Bulk	Display	A	B (Hole Size)	C	Grip Range	Wt.(lb.)	Std. Pack
K799600	K799600-1	7/16"	1/4"	3/4"	1/32"-1/4"	.01	100 ea / 10 sets
K799610	K799610-1	3/4"	1/4"	3/4"	1/32"-1/2"	.01	100 ea / 10 sets

Bulk Bags Include: (100) Pine Tree Rivets. Display Sets Includes: (6) Pine Tree Rivets.

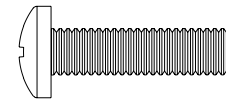


FASTENER PACKS

18-8 Stainless Steel

Oval Head (OH)

Pan Head (PH)



Bulk	Display	Size / Thread	Head	Length	Wt.(lb.)	Std. Pack
n/a	K931104-1	#8-32	Oval (OH)	3/4"	.05	10 sets
n/a	K931105-1	#8-32	Oval (OH)	1"	.05	10 sets
n/a	K931106-1	#8-32	Oval (OH)	1-1/4"	.05	10 sets
n/a	K931204-1	#10-32	Oval (OH)	3/4"	.05	10 sets
n/a	K931205-1	#10-32	Oval (OH)	1"	.05	10 sets
n/a	K931206-1	#10-32	Oval (OH)	1-1/4"	.05	10 sets
n/a	K931304-1	1/4"-20	Oval (OH)	3/4"	.05	10 sets
n/a	K931305-1	1/4"-20	Oval (OH)	1"	.05	10 sets
n/a	K931306-1	1/4"-20	Oval (OH)	1-1/4"	.05	10 sets
n/a	K932103-1	#8-32	Pan (PH)	1/2"	.05	10 sets
n/a	K932104-1	#8-32	Pan (PH)	3/4"	.05	10 sets
n/a	K932105-1	#8-32	Pan (PH)	1"	.05	10 sets
n/a	K932106-1	#8-32	Pan (PH)	1-1/4"	.05	10 sets
n/a	K932203-1	#10-32	Pan (PH)	1/2"	.05	10 sets
n/a	K932204-1	#10-32	Pan (PH)	3/4"	.05	10 sets
n/a	K932205-1	#10-32	Pan (PH)	1"	.05	10 sets
n/a	K932206-1	#10-32	Pan (PH)	1-1/4"	.05	10 sets
n/a	K932304-1	1/4"-20	Pan (PH)	3/4"	.05	10 sets
n/a	K932305-1	1/4"-20	Pan (PH)	1"	.05	10 sets
n/a	K932306-1	1/4"-20	Pan (PH)	1-1/4"	.05	10 sets

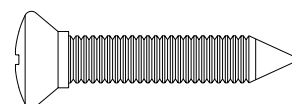
Display Sets Include: (6) Machine Screws, (6) Nyloc Nuts & (6) Flat Washers.



TAPPING SCREW PACKS

18-8 Stainless Steel

Oval Head (OH)



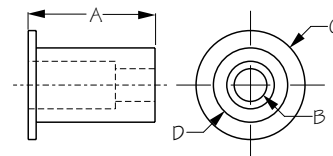
Bulk	Display	Size / Thread	Head	Length	Wt.(lb.)	Std. Pack
n/a	K936104-1	#8	Oval (OH)	3/4"	.05	10 sets
n/a	K936105-1	#8	Oval (OH)	1"	.05	10 sets
n/a	K936204-1	#10	Oval (OH)	3/4"	.05	10 sets
n/a	K936205-1	#10	Oval (OH)	1"	.05	10 sets

Display Sets Include: (6) Tapping Screws.



WELL NUTS

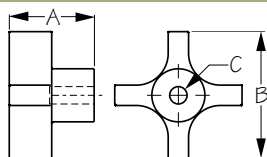
Rubber/Brass



Bulk	Display	A	B (Size / Thread)	C	D	Grip Range	Wt.(lb.)	Std. Pack
K938501	K938501-1	1/2"	#8-32	7/16"	5/8"	1/32"-5/32"	.03	1 bag / 10 sets
K938502	K938502-1	5/8"	#10-32	1/2"	3/8"	1/32"-1/4"	.03	1 bag / 10 sets
K938503	K938503-1	13/16"	1/4"-20	11/16"	1/2"	1/32"-1/4"	.04	1 bag / 10 sets

Bulk Bags Include: (100) Well Nuts . Display Sets Includes: (6) Well Nuts.

⚠ WARNING: Cancer and Reproductive Harm - www.P65Warnings.ca.gov



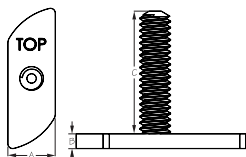
THREADED FOUR ARM KNOBS

Thermoplastic/Stainless Steel



Bulk	Display	A	B	C (Thread)	Wt.(lb.)	Std. Pack
K938553	n/a	1"	1-1/2"	1/4"-20	.02	10 ea

Bulk Bags Include: (20) Threaded Knobs . Display Sets Includes: (2) Threaded Knobs.



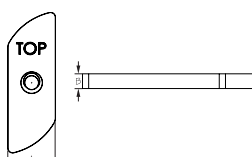
TRACK FASTENERS STUD

Formed 304 Stainless Steel



Bulk	Display	Thread	A	B	C	Wt.(lb.)	Std. Pack
K938603	K938603-1	1/4"-20	1/2"	1/8"	1"	.60 / .06	1 ea / 10 ea
K938604	K938604-1	1/4"-20	1/2"	1/8"	1-1/2"	.70 / .07	1 ea / 10 ea

Bulk parts sold in multiples of 10 or bags of 100.



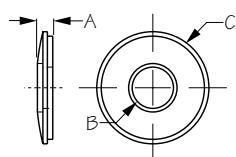
TRACK FASTENERS TAPPED

Formed 304 Stainless Steel



Bulk	Display	Thread	A	B	Wt.(lb.)	Std. Pack
K938611	K938611-1	8-32	1/2"	1/8"	.30 / .03	1 ea / 10 ea
K938613	K938613-1	1/4"-20	1/2"	1/8"	.30 / .03	1 ea / 10 ea

Fit's all kayak gear track systems. Bulk parts sold in multiples of 10 or bags of 100.



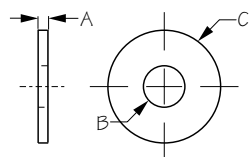
BONDED WASHER PACKS

18-8 Stainless Steel/Rubber



Bulk	Display	A	B (Size)	C	Wt.(lb.)	Std. Pack
n/a	K939301-1	1/8"	#8	1/2"	.02	10 sets
n/a	K939302-1	1/8"	#10	5/8"	.02	10 sets
n/a	K939303-1	1/8"	1/4"	5/8"	.03	10 sets

Display Sets Include: (6) Fender Washers.



FENDER WASHER PACKS

18-8 Stainless Steel



Bulk	Display	A	B (Size)	C	Wt.(lb.)	Std. Pack
n/a	K939501-1	1/32"	#8	3/4"	.02	10 sets
n/a	K939502-1	1/32"	#10	1"	.02	10 sets
n/a	K939503-1	1/32"	1/4"	1"	.03	10 sets

Display Sets Include: (6) Fender Washers.



A. PO Box 67
Everett, WA 98206

P. (425) 252-2149

F. (425) 339-1345

W. SeaLectDesigns.com

