



10

Bells

Paddles

Boat Hooks &
Accessories

Pumps

Faucets

Drain Tubes

Strainers

Thru Hulls

Motor
Accessories

Drink Holders

Oarlocks

Shock Cords

Tie Downs

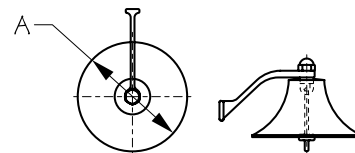
Winch
Accessories

2017

Miscellaneous

**BELL**

Cast Polished Brass



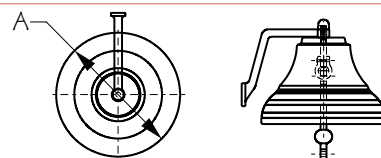
Bulk	Display	Finish	A	Fastener	Wt.(lb.)	Std. Pack
455000	n/a	Brass	6"	#6 FH	1.32	1 ea
n/a	455000-3	Brass	6"	#6 FH	1.32	1 ea
455001	n/a	Chrome	6"	#6 FH	1.28	1 ea
n/a	455001-3	Chrome	6"	#6 FH	1.28	1 ea
455720	n/a	Brass	8"	#6 FH	2.63	1 ea
n/a	455720-3	Brass	8"	#6 FH	2.63	1 ea
455721	n/a	Chrome	8"	#6 FH	2.76	1 ea
n/a	455721-3	Chrome	8"	#6 FH	2.76	1 ea

These Bells feature traditional styling. 8" Bells meet Coast Guard, ABYC, and NMMA requirements (200 cm mouth opening and striker mass no less than 3% of mass of the bell) for use on vessels 12m (39.4') to 20m (65.6') in length. Includes hanger and wall mounted bracket for easy installation. Constructed of improved cast brass (not lower grade spun brass). Installs with two #6 FH fasteners (not included). Available in mirror polished brass or chrome plated finish.

⚠ **WARNING:** Cancer and Reproductive Harm - www.P65Warnings.ca.gov

**HEAVY DUTY BRASS BELL**

Cast Polished Brass



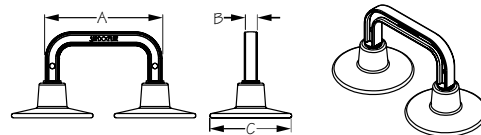
Bulk	Display	A	Fastener	Wt.(lb.)	Std. Pack
455880	n/a	8"	#8 FH	3.00	1 ea
n/a	455880-3	8"	#8 FH	3.00	1 ea

These Heavy Duty Brass Bells feature traditional styling. Bells meet Coast Guard, ABYC, and NMMA requirements (200 cm mouth opening and striker mass no less than 3% of mass of the bell) for use on vessels 12m (39.4') to 20m (65.6') in length. Constructed of improved cast brass (not lower grade spun brass). Installs with two #8 FH fasteners (not included). Includes hanger and wall mounted bracket for easy installation.

⚠ **WARNING:** Cancer and Reproductive Harm - www.P65Warnings.ca.gov

**SUCTION CUP HANDLE**

Injection Molded Nylon/Nitrile-Buna Rubber



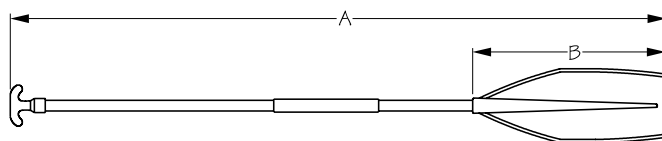
Bulk	Display	A	B	C	Wt.(lb.)	Std. Pack
n/a	490050-1	5-7/8"	5/8"	4"	.42	1 ea

Portable dual Suction Cup Handle installs instantly. Mounts in any direction on any non-porous surface. No holes, screws, or tools required. Easily mount and re-mount with no marks or damage to hull. Ideal for cleaning waterlines or boat bottoms while swimming or from a dinghy. Attach to your paddleboard or kayak for an extra handle during transport. For use above or below the waterline. Constructed of non-corrosive injection molded nylon and Nitrile-Buna rubber. Designed to assist grip, not to leverage full body weight.

⚠ **WARNING:** Cancer and Reproductive Harm - www.P65Warnings.ca.gov

**T-HANDLE PADDLE**

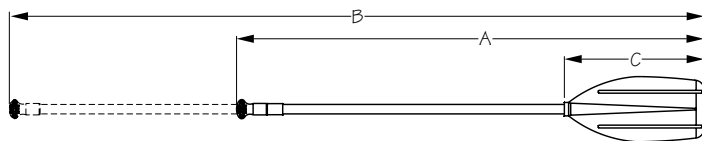
Injection Molded Nylon/Aluminum



Bulk	Display	A	B	Wt.(lb.)	Std. Pack
n/a	490100-1	48"	18"	1.22	2 ea

This economically priced T-Handle Paddle is a fixed 48" length. Constructed of aluminum with an injection molded nylon blade.

⚠ **WARNING:** Cancer and Reproductive Harm - www.P65Warnings.ca.gov

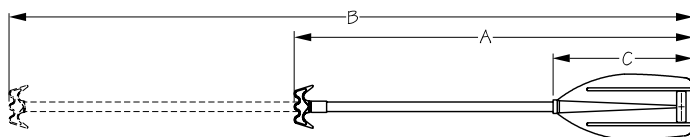
**TELESCOPIC PADDLE**

Injection Molded Nylon/Aluminum

Bulk	Display	A	B	C	Wt.(lb.)	Std. Pack
n/a	490200-1	30"	42"	14-3/4"	.89	2 ea
n/a	490250-1	39-1/2"	60"	14-3/4"	1.06	2 ea

This Telescopic Paddle features an adjustable length shaft for easy storage. The round handle allows length adjustment without blade to handle misalignment. Economically priced! Constructed of aluminum tubing with an injection molded nylon blade.

⚠ **WARNING:** Cancer and Reproductive Harm - www.P65Warnings.ca.gov

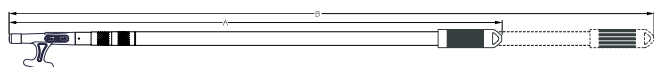
**BOAT HOOK PADDLE**

Injection Molded Nylon/Aluminum

Bulk	Display	A	B	C	Wt.(lb.)	Std. Pack
n/a	490300-1	44-1/2"	72"	14-3/4"	1.16	2 ea

This combination Boat Hook Paddle has a grab hole in paddle and a double hook handle. Telescopes to 6' for maximum reach or retracts to 44-1/2" for easy storage. Constructed of aluminum tubing with an injection molded nylon blade.

⚠ **WARNING:** Cancer and Reproductive Harm - www.P65Warnings.ca.gov

**SEA-DOG® BOAT HOOK**

Injection Molded Nylon/Aluminum

Bulk	Display	A	B	Style	Wt.(lb.)	Std. Pack
n/a	491012-1	48"	n/a	1 Piece	.50	10 ea
n/a	491013-1	72"	n/a	1 Piece	.70	10 ea
n/a	491021-1	24"	36"	2 Piece	.40	10 ea
n/a	491024-1	48"	96"	2 Piece	1.00	10 ea
n/a	491034-1	36"	96"	3 Piece	1.00	10 ea
n/a	491036-1	56"	144"	3 Piece	1.20	10 ea
n/a	491050-1	Cap Only			.01	1 ea
n/a	491051-1	Hook Only (Small) 1" O.D.			.04	1 ea
n/a	491052-1	Hook Only (Large) 1-1/8" O.D.			.06	1 ea

Sea-Dog® Boat Hooks features a threaded end attachment and comfort grip handle. Includes a four-point hook attachment coated in soft, over-molded rubber to protect your boat from scuffs and scratches. Its buoyant design keeps the boat hook afloat for more than 5 minutes. The bright orange rubber tip is highly visible and removes for accessory attachment. Fits all Sea-Dog® Boat Hook accessories, as well as any competitor's accessories featuring universal/Acme threads. Small Hook Replacement is used on 491021-1 — 491036-1. Large Hook Replacement is used on 491012-1 and 491013-1. Constructed of high quality, durable, marine grade aluminum tubing with injection molded nylon hook.



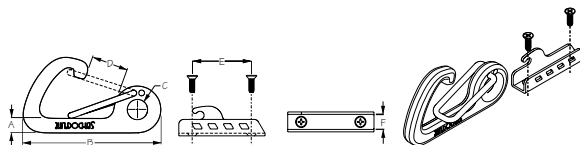
⚠ **WARNING:** Cancer and Reproductive Harm - www.P65Warnings.ca.gov





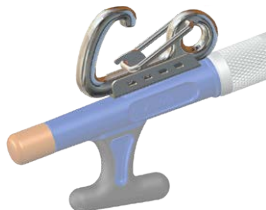
BOAT HOOK MOORING BUOY SNAP KIT

Investment Cast 316 Stainless/304 Stamped Stainless Steel



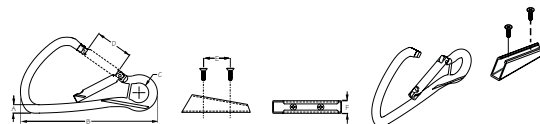
Bulk	Display	A	B	C	D	E	F	Fastener	Wt.(lb.)	Std. Pack
n/a	491055-1	3/8"	4"	5/8"	7/8"	1-3/4"	7/16"	#8 FH	.42	5 ea
n/a	491056-1	Boat Hook Keeper Plate Only							#8 FH	.06 5 ea

The Boat Hook Mooring Buoy Snap Kit is the convenient and easy solution for attaching a mooring line to a buoy or cleat. Using the included keeper plate, these channeled snaps fit onto the end of boat hooks or other poles, turning a challenging task into a quick and simple process. The kit includes the snap hook, keeper plate, and fasteners for attaching the keeper plate. Sea-Dog® Boat Hooks have pre-drilled mounting holes for easy installation. Truly an advantage on high bowed vessels by simply reaching out with the boat pole, hook the carabiner on the inside of the attachment point, then pull back on the boat pole. The carabiner snaps shut as it slides free of the pole, securely clipping to the mooring eye or cleat. Constructed of investment cast 316 stainless steel with stamped 304 stainless steel keeper plate.



LARGE BOAT HOOK MOORING BUOY SNAP KIT

Investment Cast 316 Stainless Steel/Stamped 304 Stainless Steel



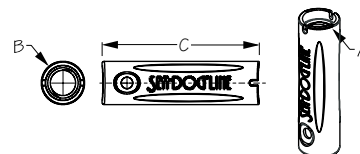
Bulk	Display	A	B	C	D	E	F	Fastener	Wt.(lb.)	Std. Pack
491058	491058-1	1/2"	8-1/8"	1-3/16"	2-1/2"	1-11/16"	3/4"	#8 FH	1.27	5 ea

The Large Boat Hook Mooring Buoy Snap Kit is the convenient and easy solution for attaching a mooring line to a buoy or cleat. Using the included keeper plate, these channeled snaps fit onto the end of boat hooks or other poles, turning a challenging task into a quick and simple process. The kit includes the snap hook, keeper plate, and fasteners for attaching the keeper plate. Sea-Dog® Boat Hooks have pre-drilled mounting holes for easy installation. Truly an advantage on high bowed vessels by simply reaching out with the boat pole, hook the carabiner on the inside of the attachment point, then pull back on the boat pole. The carabiner snaps shut as it slides free of the pole, securely clipping to the mooring eye or cleat. The large size works on cleats up to 24"! WLL - 2,185 lbs. Constructed of investment cast 316 stainless steel with stamped 304 stainless steel keeper plate.



BOAT HOOK LOCK BUTTON ACCESSORY ADAPTER

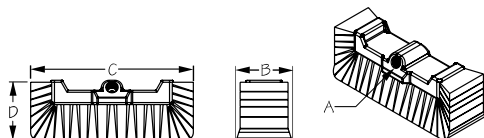
Fiberglass Filled Injection Molded Nylon



Bulk	Display	A	B	C	Wt.(lb.)	Std. Pack
n/a	491060-1	Universal/Acme Thread	1"	3-1/2"	.05	5 ea

Have an accessory that attaches with a locking button and a universal/Acme threaded boat hook? This Boat Hook Lock Button Accessory Adapter allows the Sea-Dog® Boat Hook to be used with Shurhold™ and other accessories which have a lock button attachment. Constructed of fiberglass filled injection molded nylon for strength and UV resistance. Boat hook not included.

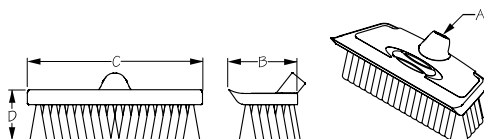


**BOAT HOOK THREE SIDED BRISTLE BRUSH**

Injection Molded Nylon

Bulk	Display	A	B	C	D	Bristle Type	Wt.(lb.)	Std. Pack
n/a	491070-1	Universal/Acme Thread	3-1/4"	10-1/2"	3-5/8"	Soft (Blue)	.68	1 ea
n/a	491080-1	Universal/Acme Thread	3-1/4"	10-1/2"	3-5/8"	Medium (Yellow)	.68	1 ea
n/a	491090-1	Universal/Acme Thread	3-1/4"	10-1/2"	3-5/8"	Stiff (White)	.68	1 ea

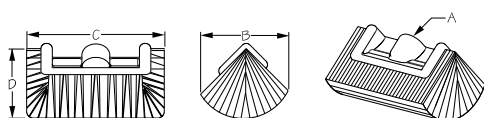
These Three Sided Bristle Brushes fit all Sea-Dog® Boat Hooks and universal/Acme threaded devices. Available in soft, medium, and stiff bristles. Soft bristles (blue) are scratch resistant for gelcoat, paint, and plastic windows. The medium bristles (yellow) are a good overall brush for textured and non-skid surfaces. Stiff bristles (white) are effective for jobs below the waterline, teak, and other tough cleaning jobs. Side bristles make it easy to clean in hard to reach places. 10-1/2" head is longer than industry standard, covering a larger cleaning area. Constructed of injection molded nylon.

**BOAT HOOK COMBINATION
SOFT BRISTLE BRUSH & SQUEEGEE**

Injection Molded Nylon/Rubber

Bulk	Display	A	B	C	D	Bristle Type	Wt.(lb.)	Std. Pack
n/a	491075-1	Universal/Acme Thread	3-1/4"	10-3/8"	2-3/4"	Soft (Blue)	.80	1 ea

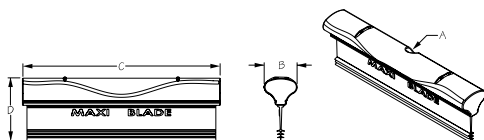
The Combination Soft Bristle Brush & Squeegee fits all Sea-Dog® Boat Hooks and universal/Acme threaded devices. Soft bristles are scratch resistant for gelcoat, paint, and plastic windows. Constructed of injection molded nylon with a marine grade silicone rubber squeegee.

**BOAT HOOK ANGLED THREE SIDED BRISTLE BRUSH**

Injection Molded Nylon

Bulk	Display	A	B	C	D	Bristle Type	Wt.(lb.)	Std. Pack
n/a	491081-1	Universal/Acme Thread	6"	10-1/4"	4-3/4"	Medium (Yellow)	1.15	1 ea

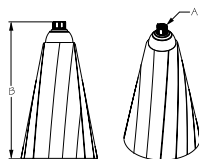
The Angled Three Sided Bristle Brush fits all Sea-Dog® Boat Hooks and universal/Acme threaded devices. This angled, medium bristle brush is great for reaching areas below the waterline and overhead hard-to-reach spaces. Constructed of Injection molded nylon.

**BOAT HOOK SILICONE SQUEEGEE**

Injection Molded Nylon/Silicone

Bulk	Display	A	B	C	D	Wt.(lb.)	Std. Pack
n/a	491100-1	Universal/Acme Thread	2"	12-1/4"	4"	.52	1 ea

This Silicone Squeegee can be attached to any Sea-Dog® Boat Hook or universal/Acme threaded device. The wide (12") coverage area easily cleans any type of window or marine surface. Comfort grip allows for manual use in tight spaces. Constructed of injection molded nylon with a heavy duty silicone blade.

**BOAT HOOK MICROFIBER MOP**

Injection Molded Nylon/Micro Fiber

Bulk	Display	A	B	Wt.(lb.)	Std. Pack
n/a	491105-1	Universal/Acme Thread	15"	.36	1 ea

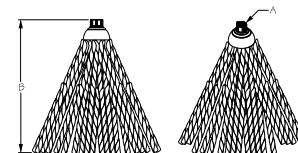
The soft straps of this Microfiber Mop provides a gentle and effective cleaning action. The fast-drying microfiber is highly absorbent and scratch resistant, preventing water spots. Fits all Sea-Dog® Boat Hooks and universal/Acme threaded devices.





BOAT HOOK YARN MOP

Injection Molded Nylon/Yarn



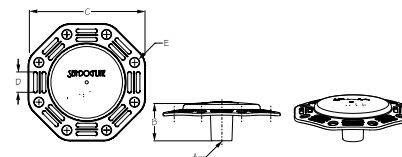
Bulk	Display	A	B	Wt.(lb.)	Std. Pack
n/a	491107-1	Universal/Acme Thread	15"	.46	1 ea

This Yarn Mop features cotton fiber strands, making this an effective cleaning accessory for use in areas that require more pressure. Fits all Sea-Dog® Boat Hooks or universal/Acme threaded devices.



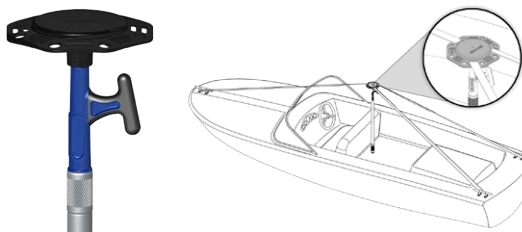
BOAT HOOK MOORING COVER SUPPORT CROWN

Injection Molded Nylon



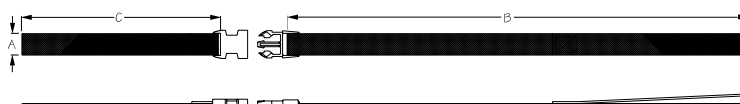
Bulk	Display	A	B	C	D	E	Wt.(lb.)	Std. Pack
n/a	491110-1	7/8" (Tapered)	2"	6-1/2"	1"	1/2"	.23	5 ea
n/a	491115-1	Strap Kit Only (Contains 3, 15' Straps)					.14	5 sets

This Mooring Cover Support Crown fits the tip of all Sea-Dog® Boat Hooks or universal/Acme threaded devices. The crown supports a mooring cover or canvas top preventing water from pooling due to rain, sleet, or snow. The unique configuration has strap or line attachments designed to secure the support crown in the correct location. Combine any Sea-Dog® Boat Hook with the Mooring Cover Support Crown (491110-1) and Mooring Cover Support Crown Straps (491115-1) for the perfect solution to nature's pooling pressures. Constructed of UV resistant injection molded nylon.



BOAT HOOK MOORING COVER SUPPORT CROWN WEBBING STRAPS

Injection Molded Nylon



Bulk	Display	A	B	C	Wt.(lb.)	Std. Pack
n/a	491115-1	1"	15'	9-1/4"	.14	5 sets

These Mooring Cover Support Crown Webbing Straps are used for positioning the Mooring Cover Support Crown (491110-1) securely in place. Includes three 15' straps, with a securing loop on one end and an adjustable snap clip on the other. Designed to set once and then simply clip in and out later for ease of use. Constructed of UV resistant injection molded nylon.



SEA-DOG® BOAT POLE

Injection Molded Nylon/Aluminum

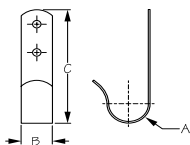


Bulk	Display	A	B	Style	Wt.(lb.)	Std. Pack
n/a	491112-1	48"	n/a	1 piece	.40	10 ea
n/a	491134-1	36"	96"	3 piece	.90	10 ea

Sea-Dog® Boat Poles feature a threaded end attachment and comfort grip handle. Its buoyant design keeps the boat hook afloat for more than 5 minutes. The bright orange rubber tip is highly visible and removes for accessory attachment. Fits all Sea-Dog® Boat Hook accessories, as well as any competitor's accessories featuring universal/Acme threads. Constructed of high quality, durable, marine grade aluminum tubing with injection molded nylon tip.



⚠ WARNING: Cancer and Reproductive Harm - www.P65Warnings.ca.gov

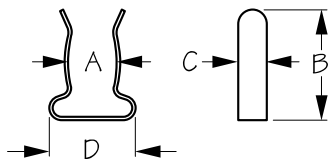
**BOAT HOOK BRACKET**

Stamped 304 Stainless Steel



Bulk	Display	A	B	C	Fastener	Wt.(lb.)	Std. Pack
491130	491130-1	1-1/4"	1"	4"	1/4" RH	.20	5 pr

Boat Hook Brackets fit boat hooks up to 1-1/4" in diameter. Constructed of corrosion resistant stamped 304 stainless steel. Installs with two 1/4" RH fasteners (not included).

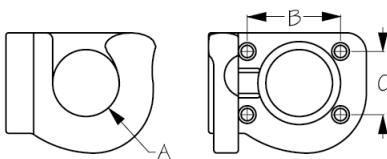
**BOAT HOOK CLIP**

Stamped 304 Stainless Steel



Bulk	Display	A	B	C	D	Fastener	Wt.(lb.)	Std. Pack
491135	491135-1	3/4" to 1"	1-11/16"	7/16"	1-3/8"	#8 RH	.03 / .06	10 ea / 10 pr
491136	491136-1	1" to 1-1/4"	2-3/8"	3/4"	1-13/16"	#8 RH	.06 / .12	10 ea / 10 pr

Boat Hook Clips fit boat hooks from 3/4" — 1-1/4" in diameter. Constructed of corrosion resistant stamped 304 stainless steel. Installs with two #8 RH fasteners (not included).

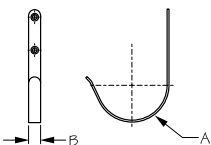
**FOLDING POLE STORAGE BRACKET**

Injection Molded Nylon/304 Stainless Steel



Bulk	Display	A	B	C	Fastener	Wt.(lb.)	Std. Pack
491140	491140-1	1-1/4"	1-3/4"	1-3/16"	#12 FH	.16 / .32	5 ea / 5 pr

These convenient Folding Pole Storage Brackets fold away when not in use. Accepts poles up to 1-1/4" in diameter. Constructed of corrosion resistant 304 stainless brackets with UV stabilized injection molded nylon hooks. Installs with four #12 FH fasteners (not included).

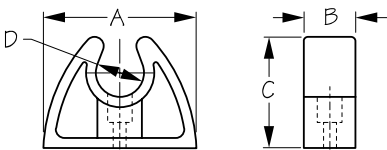
**RING BUOY BRACKET**

Stamped 304 Stainless Steel



Bulk	Display	A	B	Fastener	Wt.(lb.)	Std. Pack
491240	491240-1	4"	3/4"	1/4" FH	.26	1 ea / 10 ea

The Ring Buoy Bracket can accommodate ring buoys up to 4" in width. Constructed of corrosion resistant stamped 304 stainless steel for long life and durability. Installs with two 1/4" FH fasteners (not included).

**POLE STORAGE CLIP**

Kraton Rubber



Bulk	Display	A	B	C	D (Pole Size)	Color	Wt.(lb.)	Std. Pack
491145	491145-1	2-1/4"	3/4"	1-5/8"	3/4"	Black	.02 / .04	10 ea / 10 pr
n/a	491145-5	Display POP-Pole Storage Clip (3/4")-30 pcs.					.85	1 ea

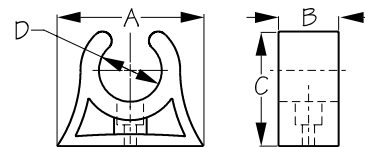
These Pole Storage Clips fit poles up to 3/4" in diameter. A great way to organize your gear; use them to secure everything from paddles to boat hooks, fishing poles, dip nets, whisker poles, tools, etc. Constructed of Kraton polymerized synthetic rubber for high strength, UV resistance, and heat stability.

⚠ **WARNING:** Cancer and Reproductive Harm - www.P65Warnings.ca.gov



POLE STORAGE CLIP

Santoprene Rubber



Bulk	Display	A	B	C	D (Pole Size)	Color	Wt.(lb.)	Std. Pack
491341	491341-1	1-1/4"	7/16"	15/16"	1/2"	Black	.01 / .02	10 ea / 10 pr
491343	491343-1	1-1/2"	7/16"	1-1/16"	5/8"	Black	.01 / .02	10 ea / 10 pr
491345	491345-1	1-3/4"	3/4"	1-1/4"	3/4"	Black	.02 / .04	10 ea / 10 pr
491349	491349-1	2-1/4"	3/4"	1-5/8"	1"	Black	.03 / .06	10 ea / 10 pr
491351	491351-1	2-15/16"	3/4"	2-1/8"	1-1/4"	Black	.08 / .16	10 ea / 10 pr
491353	491353-1	3-5/16"	3/4"	2-1/2"	1-1/2"	Black	.09 / .18	10 ea / 10 pr

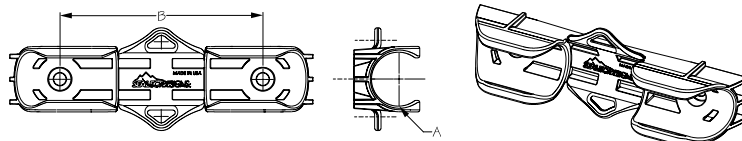
These Pole Storage Clips fit poles from 1/2" – 1-1/2" in diameter. A great way to organize your gear; use them to secure everything from paddles to boat hooks, fishing poles, dip nets, whisker poles, tools, etc. Constructed of injection molded Santoprene rubber for long term durability and dimensional stability.

⚠ **WARNING:** Cancer and Reproductive Harm - www.P65Warnings.ca.gov



BOAT HOOK/PADDLE CLIP

Injection Molded Nylon



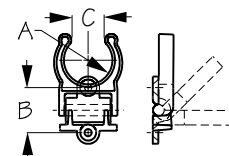
Bulk	Display	A	B	Fastener	Wt.(lb.)	Std. Pack
491361	491361-1	1-1/8"	4"	1/4" RH	.07	10 ea

This one-piece Boat Hook/Paddle Clip allows for the simple, one handed storage of your boat hook or paddle. Features leash attachment points for securing a paddle leash. Anti-snap ramps prevent line from getting stuck under the clip when not in use. Constructed of UV stabilized injection molded nylon.



FOLDING STORAGE CLIPS

Injection Molded Nylon



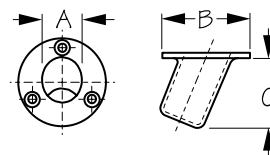
Bulk	Display	A	B	Fastener	Wt.(lb.)	Std. Pack
491545	491545-1	3/4"	1"	#8 FH	.02 / .04	10 ea / 10 pr
491549	491549-1	1"	1"	#8 FH	.02 / .04	10 ea / 10 pr
491550	491550-1	1-1/8"	1"	#8 FH	.03 / .06	10 ea / 10 pr
491551	491551-1	1-1/4"	1"	#8 FH	.03 / .06	10 ea / 10 pr
491553	491553-1	1-1/2"	1"	#8 FH	.04 / .08	10 ea / 10 pr
491555	491555-1	1-3/4"	1"	#8 FH	.04 / .08	10 ea / 10 pr
491557	491557-1	2"	1"	#8 FH	.04 / .08	10 ea / 10 pr
491599	n/a	Base Only		#8 FH	.02	10 ea

These convenient Folding Storage Clips fold away when not in use. Accepts poles from 3/4" up to 2" in diameter. Constructed of UV stabilized injection molded nylon. Installs with two #8 FH fasteners (not included).



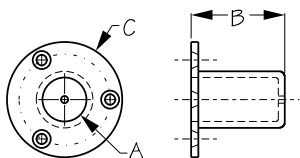
FLUSH MOUNT FLAGPOLE SOCKET

Investment Cast 316 Stainless Steel



Bulk	Display	A	B	C	Angle	Fastener	Wt.(lb.)	Std. Pack
491713	491713-1	1-1/4"	2-7/8"	2-1/2"	25°	#12 FH	.63	10 ea

The 25° Flush Mount Flagpole Socket accepts flagpoles up to 1-1/4" in diameter. Maximum speed 10 MPH. Constructed of corrosion resistant investment cast 316 stainless steel. Installs with three #12 FH fasteners (not included).

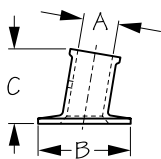
**90° FLUSH MOUNT FLAGPOLE SOCKET**

Investment Cast 316 Stainless Steel



Bulk	Display	A	B	C	Fastener	Wt.(lb.)	Std. Pack
491771	n/a	3/4"	1-5/8"	2"	#8 FH	.60	10 ea

The 90° Flush Mount Flagpole Socket accepts flagpoles up to 3/4" in diameter. Features a 1/8" drain hole. Maximum speed 10 MPH. Constructed of corrosion resistant investment cast 316 stainless steel. Installs with three #8 FH fasteners (not included).

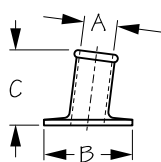
**FLAGPOLE SOCKET**

Investment Cast 316 Stainless Steel



Bulk	Display	A	B	C	Angle	Fastener	Wt.(lb.)	Std. Pack
491912	491912-1	1"	2-5/8"	2-1/8"	10°	#10 FH	.48	10 ea
491913	491913-1	1-1/4"	2-3/4"	2-5/16"	10°	#10 FH	.62	10 ea

The 10° Flagpole Socket accepts flagpoles either 1" or 1-1/4" in diameter. Set screw holds flagpole in place. Maximum speed 10 MPH. Constructed of corrosion resistant investment cast 316 stainless steel. Installs with three #10 FH fasteners (not included).

**FLAGPOLE SOCKET**

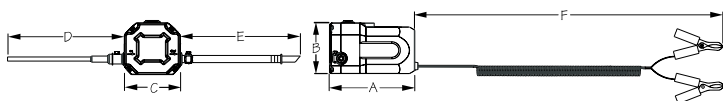
Sand Cast Brass Chrome Plated



Bulk	Display	A	B	C	Angle	Fastener	Wt.(lb.)	Std. Pack
492211	492211-1	3/4"	2"	1-3/4"	10°	#8 FH	.24	10 ea
492212	492212-1	1"	2-1/2"	2"	10°	#8 FH	.33	10 ea
492213	492213-1	1-1/4"	2-3/4"	2-1/8"	10°	#10 FH	.49	10 ea

The 10° Flagpole Socket accepts flagpoles either 3/4", 1", or 1-1/4" in diameter. Maximum speed 10 MPH. Constructed of chrome plated sand cast brass for durability and corrosion resistance. Installs with three FH fasteners (not included).

⚠ **WARNING:** Cancer and Reproductive Harm - www.P65Warnings.ca.gov

**PREMIUM ELECTRIC OIL PUMP**

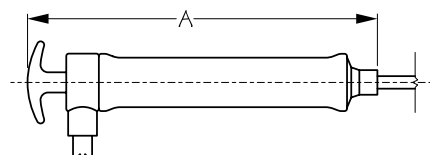
Bulk	Display	A	B	C	D	E	F	Inlet Tube Dia.	Wt.(lb.)	Std. Pack
n/a	501072-3	5-1/8"	3-1/8"	3-1/8"	48"	80"	70"	1/4"	1.88	1 ea



This portable, lightweight Premium Electric Oil Pump is easy to use and transport. The self-priming 12V pump attaches to battery terminals with alligator clips and drains oil through the dipstick tube on outboards and sterndrives. Convenient DIY operation saves money on expensive oil changes. Its compact size makes it easy to store. Includes 48" inlet and 80" outlet hoses. 12VDC. 60W. Maximum run time: 30 minutes. NOT intended for commercial use. NOT suitable for pumping out transmission oil, water, or flammable liquids.

- Oil flow rate: 0.84 quarts/min @ 140°F (0.8 liters/min @ 60°C)
- Diesel flow rate: 1.9 quarts/min @ 75°F (1.8 liters/min @ 23°C)

⚠ **WARNING:** Cancer and Reproductive Harm - www.P65Warnings.ca.gov

**MANUAL OIL CHANGE PUMP**

Brass



Bulk	Display	A	Inlet Tube	Outlet Tube	Wt.(lb.)	Std. Pack
502006	502006-1	8-7/8"	5/16" x 24-1/2"	1/2" x 10-3/4"	.45	1 ea

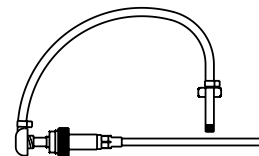
Convenient Manual Oil Change Pump drains oil through the dipstick on inboard and I/O engines. Includes 2 drain tubes.

⚠ **WARNING:** Cancer and Reproductive Harm - www.P65Warnings.ca.gov



LOWER UNIT STANDARD PUMP

Nylon/Aluminum



Bulk	Display	Description	Thread Pitch	Wt.(lb.)	Std. Pack
n/a	502150-1	Lower Unit Standard Pump	3/8"-16	.11	1 ea
n/a	502159-1	Yamaha Adapter	8mm-1.25	.01	1 ea

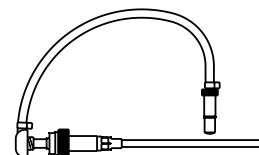
The Lower Unit Standard Pump fits quart oil bottles. Flexible hose gets into hard to reach locations. Threaded (3/8"-16) fitting fits Mercruiser, OMC, Evinrude, Johnson, Honda (70hp & up), Volvo, Force, Mercury (US origin models) and Gamefisher lower units. Includes Yamaha adapter (8mm-1.25) fitting for Mercury (Japanese origin models), Yamaha, Nissan, Tohatsu, Honda.

⚠ WARNING: Cancer and Reproductive Harm - www.P65Warnings.ca.gov



LOWER UNIT DELUXE PUMP

Nylon/Aluminum



Bulk	Display	Description	Thread Pitch	Wt.(lb.)	Std. Pack
n/a	502155-1	Lower Unit Deluxe Pump	3/8"-16	.17	1 ea
n/a	502159-1	Yamaha Adapter 8mm-1.25		.01	1 ea

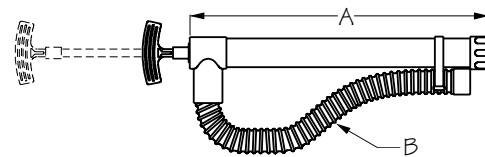
The Lower Unit Deluxe Pump fits quart oil bottles. Flexible hose gets into hard to reach locations. Metal threaded (3/8"-16) fitting fits Mercruiser, OMC, Evinrude, Johnson, Honda (70hp & up), Volvo, Force, Mercury (US origin models) and Gamefisher lower units. Includes Yamaha adapter (8mm-1.25) fitting for Mercury (Japanese origin models), Yamaha, Nissan, Tohatsu, Honda.

⚠ WARNING: Cancer and Reproductive Harm - www.P65Warnings.ca.gov



MANUAL BILGE PUMP

Injection Molded Nylon



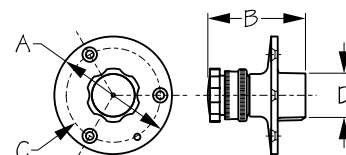
Bulk	Display	A	B	Strokes Per Gallon	GPM	Wt.(lb.)	Std. Pack
n/a	503124-1	18"	24"	10	6	1.43	1 ea
n/a	503236-1	24"	36"	6	10	1.89	1 ea
n/a	503372-1	36"	72"	4	13	3.08	1 ea

These Manual Bilge Pumps are designed for use in small boats without electrical power or for larger boats in emergencies where power is no longer available. Compact, lightweight, and easy to stow. Foot valve is removable for easy cleaning. Capacities from 6-13 GPM. Pumps feature removable hoses and storage clips. To prevent leaks, hose must be screwed in, NOT pushed in. Constructed of durable UV resistant injection molded nylon.



FRESH WATER INLET

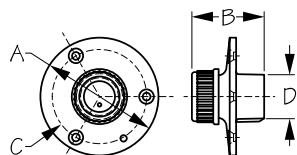
Brass Chrome Plated



Bulk	Display	A	B	C	D	Fastener	Wt.(lb.)	Std. Pack
512110	512110-1	2-3/4"	2-3/8"	2-3/16"	1"	#8 FH	.40	10 ea
512119	512119-1						.02	10 ea

The Fresh Water Inlet is designed to provide a hookup to a pressurized water system while moored. Standard female swivel hose connector. Comes complete with a black plastic watertight plug for use when not connected to onshore water. Pipe size: 1/2" FIPT x 3/4" FGHT. Constructed of chrome plated brass.

⚠ WARNING: Cancer and Reproductive Harm - www.P65Warnings.ca.gov

**WASHDOWN WATER OUTLET**

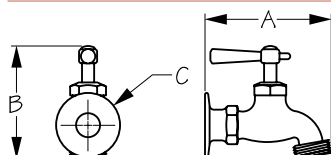
Brass Chrome Plated



Bulk	Display	A	B	C	D	Fastener	Wt.(lb.)	Std. Pack
512120	512120-1	2-3/4"	1-11/16"	2-3/16"	1"	#8 FH	.32	10 ea
512129	512129-1	Replacement Cap					.02	10 ea

The Washdown Water Outlet allows for a garden hose to be hooked up to the onboard water system. Standard male hose connector. Requires separate ball or gate valve to regulate water flow. Pipe size: 1/2" FIPT x 3/4" MGHT. Constructed of chrome plated brass.

⚠ WARNING: Cancer and Reproductive Harm - www.P65Warnings.ca.gov

**WASHDOWN FAUCET**

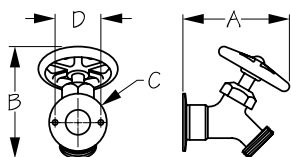
Brass Chrome Plated/Zinc Chrome Plated Handle



Bulk	Display	A	B	C	Wt.(lb.)	Std. Pack
512210	512210-1	3-5/8"	3-7/16"	1-13/16"	.52	10 ea

The Washdown Faucet is ideal for exterior fresh water washdown applications. Allows control of water flow on exterior surface. Pipe size: 1/2" FIPT x 3/4" MGHT. Constructed of chrome plated brass.

⚠ WARNING: Cancer and Reproductive Harm - www.P65Warnings.ca.gov

**WASHDOWN FAUCET**

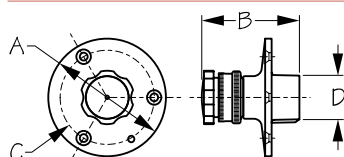
Brass Chrome Plated



Bulk	Display	A	B	C	D	Fastener	Wt.(lb.)	Std. Pack
512220	512220-1	3-1/16"	3-5/16"	1-5/8"	1-5/16"	#4 FH	.55	10 ea

The Washdown Faucet is ideal for exterior fresh water washdown applications. Allows control of water flow on exterior surface. Pipe size: 1/2" FIPT x 3/4" MGHT. Constructed of chrome plated brass.

⚠ WARNING: Cancer and Reproductive Harm - www.P65Warnings.ca.gov

**FRESH WATER INLET**

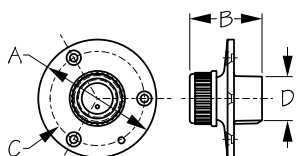
Investment Cast 316 Stainless Steel



Bulk	Display	A	B	C	D	Fastener	Wt.(lb.)	Std. Pack
513110	513110-1	2-3/4"	2-3/8"	2-3/16"	1"	#8 FH	.43	5 ea
512119	512119-1	Replacement Cap					.02	10 ea

The Fresh Water Inlet is designed to provide a fresh water hookup to a pressurized water system while moored. Standard female swivel hose connector. Comes complete with a black plastic watertight plug for use when not connected to onshore water. Pipe size: 1/2" FIPT x 3/4" FGHT. Constructed of corrosion resistant investment cast 316 stainless steel.

⚠ WARNING: Cancer and Reproductive Harm - www.P65Warnings.ca.gov

**WASHDOWN WATER OUTLET**

Investment Cast 316 Stainless Steel



Bulk	Display	A	B	C	D	Fastener	Wt.(lb.)	Std. Pack
513120	513120-1	2-3/4"	1-11/16"	2-3/16"	1"	#8 FH	.32	5 ea
512129	512129-1	Replacement Cap					.02	10 ea

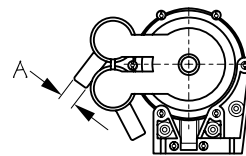
The Washdown Water Outlet allows for a garden hose to be hooked up to the onboard water system for use as a washdown system. Standard male hose connector. Requires separate ball or gate valve to regulate water flow. Pipe size: 1/2" FIPT x 3/4" MGHT. Constructed of corrosion resistant investment cast 316 stainless steel.

⚠ WARNING: Cancer and Reproductive Harm - www.P65Warnings.ca.gov



GALLEY PUMP

Injection Molded Delrin



Bulk	Display	Output	A	Fastener	Wt.(lb.)	Std. Pack
n/a	517060-3	3 GPM	1/2" Hose	#8 RH	1.90	1 ea
n/a	517065-1	Pump Repair Kit			.10	5 ea

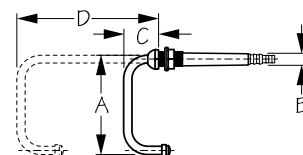
This foot pump delivers a hands-free solution. Ideal for use in tight galley spaces. Smooth self-priming operation it can be run dry without issues. Easy to install with multiple mounting options. 3 gallon per minute capacity. For use with fresh or salt water. Constructed of injection molded Delrin.

⚠ WARNING: Cancer and Reproductive Harm - www.P65Warnings.ca.gov



SWIVELING TELESCOPIC FAUCET

Aluminum/Plastic

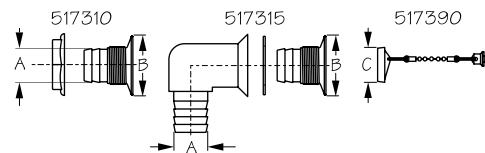


Bulk	Display	A	B	C	D	Wt.(lb.)	Std. Pack
517080	n/a	5"	9/16"	1-5/8"	4-9/16"	.16	1 ea



SINK DRAIN

Injection Molded Delrin



Bulk	Display	Style	A	B	C	Wt.(lb.)	Std. Pack
517310	n/a	Straight 1-1/4"	1"	1-7/8"	1-1/8"	.06	10 ea
517315	n/a	90° 1-1/4"	1"	1-7/8"	1-1/8"	.15	10 ea
517390	n/a	Sink Stopper	n/a	n/a	1-1/8"	.01	10 ea

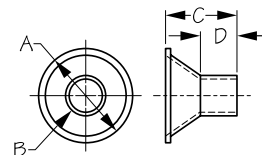
- Straight 1-1/4" Sink Drain (517310) includes nut
- Sink Drain with 90° Elbow (517315) includes a straight 1-1/4" sink drain (517310) and gasket
- Sink Stopper (517390) sold separately

⚠ WARNING: Cancer and Reproductive Harm - www.P65Warnings.ca.gov



SINK FUNNEL DRAIN

Injection Molded Polyethylene



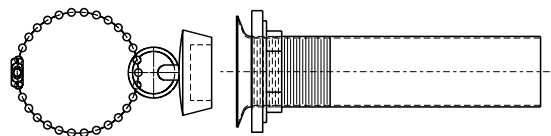
Bulk	Display	A	B (Hose Size)	C	D	Wt.(lb.)	Std. Pack
517336	517336-1	1-3/4"	3/4"	1-5/16"	11/16"	.01	10 ea

Sink Drain Funnel fits Sea-Dog® 2" Drains (517525 and 517526).



SINK DRAIN TUBE WITH STOPPER

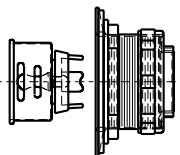
Chrome/Brass



Bulk	Display	Style	Wt.(lb.)	Std. Pack
517515	517515-1	Straight 1-1/4"	.25	1 ea

Sea-Dog® Sink Drain Tube includes stopper with chain. Straight 1-1/4". Constructed of chrome plated brass.

⚠ WARNING: Cancer and Reproductive Harm - www.P65Warnings.ca.gov

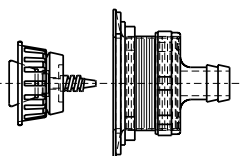
**SINK DRAIN WITH STRAINER**

Zinc/Stainless Steel



Bulk	Display	Style	Wt.(lb.)	Std. Pack
517525	517525-1	Straight 2"	.30	1 ea

Straight 2".

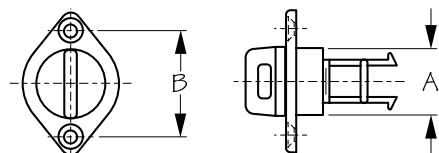
⚠ **WARNING:** Cancer and Reproductive Harm - www.P65Warnings.ca.gov**SINK DRAIN WITH STRAINER**

Stainless Steel Body/Zinc Cap/Nylon Fittings



Bulk	Display	Style	Wt.(lb.)	Std. Pack
517526	517526-1	Straight 2"	.48	1 ea

Sea-Dog® Sink Drain with Strainer has 5/8" barb on drain. Straight 2".

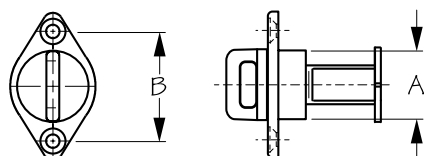
⚠ **WARNING:** Cancer and Reproductive Harm - www.P65Warnings.ca.gov**DRAIN PLUG**

Injection Molded Nylon



Bulk	Display	A	B	B	Fastener	Wt.(lb.)	Std. Pack
520010	520010-1	1"	1-1/2"	1-1/2"	#10 FH	.03	10 ea
520021	520021-1	Replacement Plug for 520010, 520020 & 520030					.01 / .02 10 ea / 10 pr
n/a	520021-5	POP Display Replacement Plug for 520010, 520020 & 520030					.55 1 ea

This Drain Plug was designed with a molded-in recess in the base to trap sealant to provide a more watertight seal. For transom installation, baitwells, ice chests, tanks, etc. 1" plug with gasket. Constructed of UV resistant injection molded nylon. Fits many RIBs and small boats.

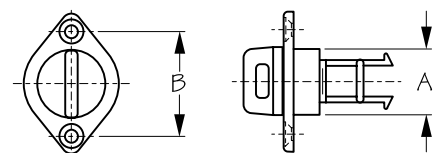
**DRAIN PLUG**

Injection Molded Nylon



Bulk	Display	A	B	Fastener	Wt.(lb.)	Std. Pack
520015	520015-1	1"	1-9/16"	#10 FH	.03	10 ea
520016	520016-1	Replacement Plug				.01 / .02 10 ea / 10 pr

New thread and seal design! This Drain Plug was designed with a molded-in recess in the base to trap sealant to provide a more watertight seal. For transom installation, baitwells, ice chests, tanks, etc. 1" plug with gasket. Constructed of UV resistant injection molded nylon.

**DRAIN PLUG**

Forged Brass Chrome Plated/Injection Molded Nylon



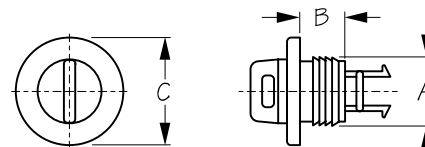
Bulk	Display	A	B	Fastener	Wt.(lb.)	Std. Pack	
520020	520020-1	1"	1-1/2"	#10 FH	.08	10 ea	
520021	520021-1	Replacement Plug for 520010, 520020 & 520030				.01 / .02	10 ea / 10 pr
n/a	520021-5	POP Display Replacement Plug for 520010, 520020 & 520030				.55	1 ea

This Drain Plug has a molded-in captive mechanism that keeps the plug in the body, but still allows easy plug removal when needed. Constructed of UV resistant injection molded nylon with chrome plated formed brass base.

⚠ **WARNING:** Cancer and Reproductive Harm - www.P65Warnings.ca.gov

**DRAIN PLUG**

Injection Molded Nylon

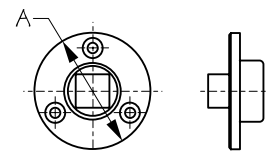


Bulk	Display	A	B	C	Wt.(lb.)	Std. Pack
520030	520030-1	1"	11/16"	1-11/16"	.04	10 ea
520021	520021-1	Replacement Plug for 520010, 520020 & 520030			.01 / .02	10 ea / 10 pr
n/a	520021-5	POP Display Replacement Plug for 520010, 520020 & 520030			.55	1 ea

This press fit Drain Plug is designed to fit securely in a 1" hole without the use of fasteners. Compression force works with the ridge design on the body to keep the plug in place. Sealant should be applied prior to installation to ensure a watertight seal. Constructed of UV resistant injection molded nylon.

**GARBOARD DRAIN & PLUG**

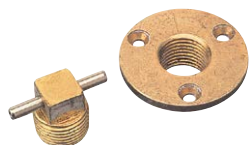
Machined Bronze



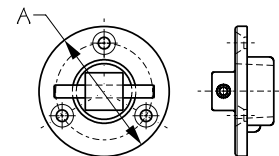
Bulk	Display	Thread Size	A	Fastener	Wt.(lb.)	Std. Pack
520040	520040-1	1/2" NPT	2"	#10 FH	.26	10 ea
520041	520041-1	Replacement Plug			.04	10 ea
n/a	520041-5	Display POP-Replacement Plug for 520040-30 pcs.			1.45	1 ea

The Garboard Drain & Plug provides drainage for bilge during haul-out. 1/2" NPT tapered thread plug provides a watertight seal. 2" diameter flange. Plug has a square top for use with a socket wrench. Constructed of machined bronze. Installs with three #10 FH fasteners (not included).

⚠ **WARNING:** Cancer and Reproductive Harm - www.P65Warnings.ca.gov

**GARBOARD DRAIN & PLUG**

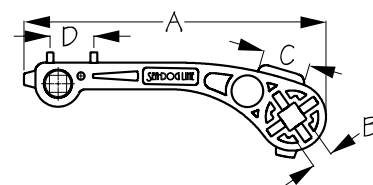
Die Cast Bronze



Bulk	Display	Thread Size	A	Fastener	Wt.(lb.)	Std. Pack
520042	520042-1	1/2" NPT	2"	#10 FH	.25	10 ea
520043	520043-1	Replacement Plug			.06	10 ea

The Garboard Drain & Plug provides drainage for bilge during haul-out. 1/2" NPT tapered thread plug provides a watertight seal. 2" diameter flange. Plug has a square T-top for manual tightening or removal. Constructed of die cast bronze. Installs with three #10 FH fasteners (not included).

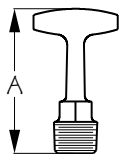
⚠ **WARNING:** Cancer and Reproductive Harm - www.P65Warnings.ca.gov

**PLUGMATE™**Injection Molded Polycarbonate
/Machined Bronze

Bulk	Display	A	B	C	D	Plug Included	Wt.(lb.)	Std. Pack
520045	520045-1	8-1/4"	9/16"	1-5/16"	1-3/16"	No/Yes	.13 / .17	10 ea / 1 ea
520041	520041-1	Replacement Plug					.04	10 ea
n/a	520041-5	Display POP-Garboard Replacement Plug-30 pcs.					1.45	1 ea

The Plugmate™ wrench features multiple deck keys. Fits standard garboard plugs as well as "T" style plugs. Constructed of durable injection molded polypropylene. Available in custom colors upon request. 520045-1 includes one replacement plug stored in handle (pictured). 520045 is wrench only (plug not included).

⚠ **WARNING:** Cancer and Reproductive Harm - www.P65Warnings.ca.gov

**GARBOARD DRAIN T-HANDLE PLUG**

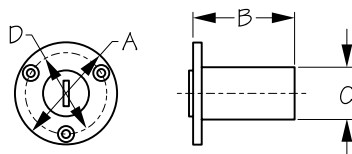
Die Cast Bronze



Bulk	Display	Thread Size	A	Wt.(lb.)	Std. Pack
n/a	520047-1	3/4" NPT	2-5/16"	.35	10 ea

3/4" NPT tapered thread provides a watertight seal.

▲ **WARNING:** Cancer and Reproductive Harm - www.P65Warnings.ca.gov

**GARBOARD DRAIN & PLUG**

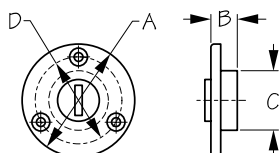
Injection Molded Nylon/Acetyl



Bulk	Display	A	B	C	D	Fastener	Wt.(lb.)	Std. Pack
520050	520050-1	2-3/16"	2-3/16"	1-1/8"	1-3/4"	#8 FH	.06	10 ea
520051	520051-1	Replacement Plug					.01 / .02	10 ea / 10 pr

Garboard Drain & Plug provides drainage for bilge during haul-out. Features integral 1-1/8" acetyl drain tube. Pipe plug ensures a watertight seal. Constructed of sturdy UV stabilized injection molded nylon. Installs with three #8 FH fasteners (not included).

▲ **WARNING:** Cancer and Reproductive Harm - www.P65Warnings.ca.gov

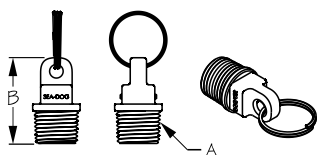
**GARBOARD DRAIN & PLUG**

Injection Molded Nylon



Bulk	Display	A	B	C	D	Fastener	Wt.(lb.)	Std. Pack
520055	520055-1	2-3/16"	1/2"	1-3/16"	1-11/16"	#8 FH	.04	10 ea
520056	520056-1	Replacement Plug					.01 / .02	10 ea / 10 pr

This Garboard Drain & Plug provides drainage for bilge during haul-out. 1/2" pipe thread plug ensures a watertight seal. May be used in other 1/2" plug applications. Constructed of sturdy, UV stabilized injection molded nylon. Installs with three #8 FH fasteners (not included).

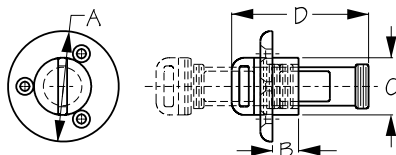
**EMERGENCY GARBOARD DRAIN PLUG**

Injection Molded Nylon



Bulk	Display	A	B	Wt.(lb.)	Std. Pack
520059	520059-1	1/2" NPT	1-9/16"	.01	10 ea
n/a	520059-5	Display POP-Emergency Garboard Drain Plug-30 pcs.		.30	1 pr

The Emergency Garboard Drain Plug features an attached key ring, ensuring you always have a back-up if you lose your garboard plug. Fits most 1/2" NPT threaded drains. For temporary use only. Constructed of injection molded nylon.

**CAPTIVE GARBOARD DRAIN & PLUG**

Investment Cast 316 Stainless Steel



Bulk	Display	A	B	C	D	Fastener	Wt.(lb.)	Std. Pack
520060	520060-1	2"	1/2"	1-1/8"	2-5/8"	#8 FH	.30	10 ea
520068	n/a	Replacement Plug and Gasket Only					.15	5 ea
520069	n/a	Replacement Gasket Only					.01	10 ea

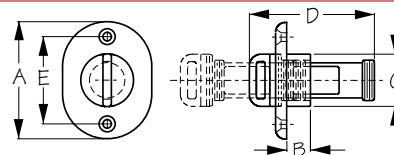
This Captive Garboard Drain & Plug is a direct replacement for the bronze, traditional style Sea-Dog® Garboards (520040 and 520042). Captive plug prevents plug from being lost. Constructed of corrosion resistant investment cast 316 stainless steel. Installs with three #8 FH fasteners (not included).

▲ **WARNING:** Cancer and Reproductive Harm - www.P65Warnings.ca.gov



OBLONG CAPTIVE GARBOARD DRAIN & PLUG

Investment Cast 316 Stainless Steel



Bulk	Display	A	B	C	D	E	Fastener	Wt.(lb.)	Std. Pack
520065	520065-1	2-7/16"	1/2"	1-1/8"	2-5/8"	1-13/16"	#8 FH	.24	5 ea
520068	n/a	Replacement Plug and Gasket Only							.15 5 ea
520069	n/a	Replacement Gasket Only							.01 10 ea

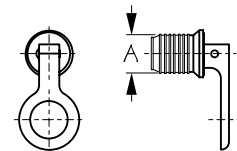
Oblong Captive Garboard Drain & Plug sits lower in the stern for more water removal. Captive plug prevents plug from being lost. Constructed of corrosion resistant investment cast 316 stainless steel. Installs with two #8 FH fasteners (not included).

⚠ WARNING: Cancer and Reproductive Harm - www.P65Warnings.ca.gov



SNAP HANDLE DRAIN PLUG

Stamped Brass/Nitrile Rubber



Bulk	Display	A	Material	Chain	Wt.(lb.)	Std. Pack
520070	520070-1	1"	Brass	No	.11	10 ea
520071	520071-1	1"	Brass	Yes	.20	10 ea
520072	520072-1	1-1/4"	Brass	No	.13	10 ea
n/a	520070-5	Display POP-Snap Handle Drain Plug 1"-25 pcs.				3.00 1 ea

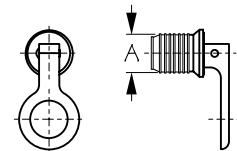
The Snap Handle Drain Plug features a cam action for easy installation and leak proof seal. Simply turn the handle clockwise to tighten the plug then snap down the handle to lock. Constructed of durable stamped brass and nitrile rubber.

⚠ WARNING: Cancer and Reproductive Harm - www.P65Warnings.ca.gov



SNAP HANDLE DRAIN PLUG

Stamped Stainless Steel/Nitrile Rubber



Bulk	Display	A	Material	Chain	Wt.(lb.)	Std. Pack
520075	520075-1	1"	Stainless	No	.11	10 ea
n/a	520075-5	Display POP-Snap Handle Drain Plug 1"-20 pcs.				3.00 1 ea

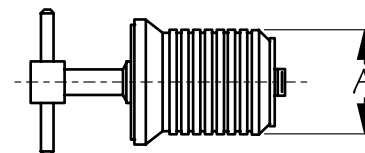
The Snap Handle Drain Plug features a cam action for easy installation and leak proof seal. Simply turn the handle clockwise to tighten the plug then snap down the handle to lock. Constructed of durable corrosion resistant stamped stainless steel and nitrile rubber.

⚠ WARNING: Cancer and Reproductive Harm - www.P65Warnings.ca.gov



T-HANDLE DRAIN PLUG

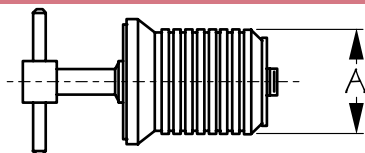
Stamped Brass/Nitrile Rubber



Bulk	Display	A	Material	Wt.(lb.)	Std. Pack
520080	520080-1	1"	Brass	.10	10 ea
520082	520082-1	1-1/4"	Brass	.12	10 ea
n/a	520080-5	Display POP-T-Handle Drain Plug 1"-30 pcs.			3.25 1 ea

The T-Handle Drain Plug provides a leak proof seal. Turn the T-handle clockwise to lock in place, counter clockwise to release. Constructed of corrosion and vibration resistant stamped brass and nitrile rubber. Available in 1" and 1-1/4" sizes.

⚠ WARNING: Cancer and Reproductive Harm - www.P65Warnings.ca.gov

**T-HANDLE DRAIN PLUG**

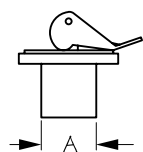
Stamped Stainless Steel/Nitrile Rubber



Bulk	Display	A	Material	Wt.(lb.)	Std. Pack
520085	520085-1	1"	Stainless	.10	10 ea
520086	520086-1	1-1/4"	Stainless	.12	10 ea
n/a	520085-5	Display POP-T-Handle Drain Plug 1"-20 pcs.		2.12	1 ea

The T-Handle Drain Plug provides a leak proof seal. Turn the T-handle clockwise to lock in place, counter clockwise to release. Constructed of corrosion and vibration resistant stamped stainless steel and nitrile rubber. Available in 1" and 1-1/4" sizes.

▲ **WARNING:** Cancer and Reproductive Harm - www.P65Warnings.ca.gov

**BAITWELL PLUGS**

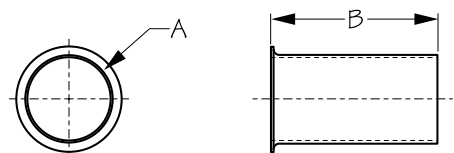
Stamped Brass/Nitrile Rubber



Bulk	Display	A	Wt.(lb.)	Std. Pack
520091	520091-1	3/8"	.03 / .06	10 ea / 10 pr
520092	520092-1	1/2"	.04 / .08	10 ea / 10 pr
520093	520093-1	5/8"	.04 / .08	10 ea / 10 pr
520094	520094-1	3/4"	.05 / .10	10 ea / 10 pr
520095	520095-1	7/8"	.07 / .14	10 ea / 10 pr
n/a	520092-5	Display POP-Baitwell Plug 1/2"-50 pcs.	2.25	1 ea
n/a	520093-5	Display POP-Baitwell Plug 5/8"-50 pcs.	2.25	1 ea
n/a	520094-5	Display POP-Baitwell Plug 3/4"-45 pcs.	2.50	1 ea
n/a	520095-5	Display POP-Baitwell Plug 7/8"-45 pcs.	3.40	1 ea

The Baitwell Plug features a cam action for easy installation and leak proof seal for livewells and baitwells. Simply turn the handle clockwise to tighten the plug then snap down the handle to lock. Snap lock handle is adjustable to tighten plug size to fit most bait wells currently available. Constructed of durable stamped brass and nitrile rubber.

▲ **WARNING:** Cancer and Reproductive Harm - www.P65Warnings.ca.gov

**DRAIN TUBE**

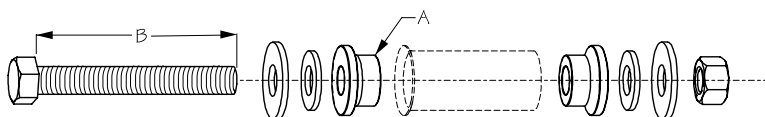
Formed Brass



Bulk	Display	A	B	Wt.(lb.)	Std. Pack
520210	520210-1	1"	1-7/8"	.06	10 ea
520220	520220-1	1"	2-3/8"	.07	10 ea
520230	520230-1	1"	2-7/8"	.09	10 ea
520280	n/a	1"	8"	.20	5 ea
520430	n/a	1-1/4"	2-7/8"	.12	10 ea

Formed Drain Tube is flanged 90° on one end for use as a drain for transom, motorwell, livewell, or baitwell applications. For use with brass or stainless steel drain plugs. Drain Tube Flaring Tool (520290-1 or 520295-1) required for installation. Constructed of formed brass. Available in 1" and 1-1/4" diameters.

▲ **WARNING:** Cancer and Reproductive Harm - www.P65Warnings.ca.gov

**DRAIN TUBE FLARING TOOL**

Stainless Steel/Zinc Plated Steel



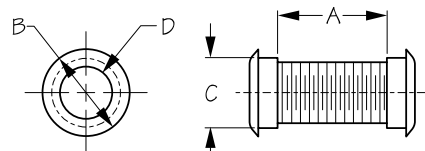
Bulk	Display	A	B	Wt.(lb.)	Std. Pack
n/a	520290-1	1"	4"	.51	1 ea
n/a	520295-1	1-1/4"	4"	.73	1 ea

The Drain Tube Flaring Tools are for use installing 1" or 1-1/4" drain tubes. Can be used to install all Sea-Dog® Drain Tubes (520210-520430). Handy item for any toolbox.

▲ **WARNING:** Cancer and Reproductive Harm - www.P65Warnings.ca.gov

**DRAIN TUBE**

Injection Molded HDPE/ABS

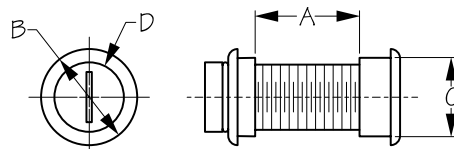


Bulk	Display	A	B	C	D	Material Type	Color	Wt.(lb.)	Std. Pack
520320	520320-1	3/4" - 2-1/2"	1-1/4"	1"	3/4"	HDPE	White	.02	10 ea
520323	520323-1	3/4" - 2-1/2"	1-1/4"	1"	3/4"	ABS	Black	.02	10 ea

Drain Tubes remove water and fluids from motor wells, livewells, and baitwells. They are flanged 90° on one end and fit standard 1" diameter holes. These drain tubes feature an adjustable length to accommodate bulkhead installations from 3/4" up to 2-1/2" thick. Drain tube nut locks in place for a tight, leak-proof seal. Designed for use with snap handle and T-handle drain plugs. Save on installation time; no flaring tools necessary! Constructed of durable impact resistant injection molded HDPE or ABS. Available in white or black.

**MOTORWELL DRAIN TUBE**

Injection Molded Nylon



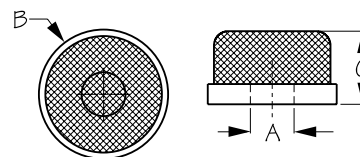
Bulk	Display	A	B	C	D	Color	Wt.(lb.)	Std. Pack
520325	520325-1	3/4" - 2-1/2"	1-3/8"	1-1/8"	1"	White	.06	10 ea
OP52031	OP52031-1	Replacement Plug					White	.01

Drain Tubes remove water and fluids from motor wells, livewells, and baitwells. They are flanged 90° on one end and fit standard 1-1/8" diameter holes. These drain tubes feature an adjustable length to accommodate bulkhead installations from 3/4" up to 2-1/2" thick. Drain tube nut locks in place for a tight, leak-proof seal. Includes drain plug. Save on installation time; no flaring tools necessary! Constructed of durable impact resistant injection molded nylon.

⚠ **WARNING:** Cancer and Reproductive Harm - www.P65Warnings.ca.gov

**BAITWELL STRAINER**

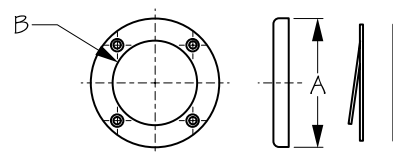
Stainless Steel/Nylon



Bulk	Display	A	B	C	Wt.(lb.)	Std. Pack
520454	520454-1	3/4"	2-1/4"	1-1/4"	.05	10 ea

**SCUPPER VALVE**

Injection Molded Nylon



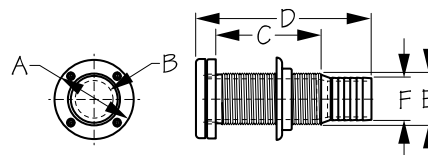
Bulk	Display	A	B	Fastener	Wt.(lb.)	Std. Pack
520500	520500-1	2-13/16"	1-7/8"	#6 FH	.06	10 ea

This Scupper Valve provides a water exit for boats with self-bailing cockpits. Ideal for above the water line drainage. Valve features soft black flapper that seals to prevent backwash. Compatible with most self-bailing applications. Constructed of durable injection molded nylon. Surface mounts with four #6 FH fasteners (not included).

⚠ **WARNING:** Cancer and Reproductive Harm - www.P65Warnings.ca.gov

**THRU-HULL WITH SCUPPER VALVE**

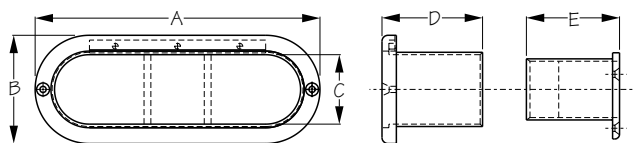
Injection Molded Acetel



Bulk	Display	A	B	C	D	E	F	Wt.(lb.)	Std. Pack
520510	520510-1	2-13/16"	1-1/4"	3-11/16"	6-3/16"	1-13/16"	1-1/2" Hose	.39	10 ea
520500	520500-1	Replacement Scupper Valve							.06
520690	520690-1	Replacement Thru-Hull							.33

This Thru-Hull Scupper Valve mounts through the transom and provides a water exit for boats with self-bailing cockpits. Ideal for above the water line drainage. Valve features a soft black flapper. For use with 1-1/2" hose. Compatible with most self-bailing applications. Constructed of injection molded acetel. Installs with four #6 FH fasteners (included).

⚠ **WARNING:** Cancer and Reproductive Harm - www.P65Warnings.ca.gov

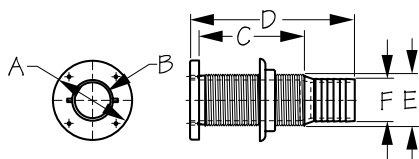
**SCUPPER VALVE**

Injection Molded Nylon/Neoprene



Bulk	Display	A	B	C	D	E	Color	Fastener	Wt.(lb.)	Std. Pack
520520	520520-1	6"	2-1/4"	1-1/2"	2-1/8"	2"	Black	#4 FH	.19	10 ea
520525	520525-1	6"	2-1/4"	1-1/2"	2-1/8"	2"	White	#4 FH	.19	10 ea

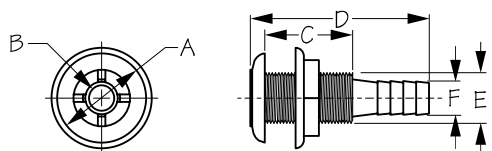
▲ **WARNING:** Cancer and Reproductive Harm - www.P65Warnings.ca.gov

**THRU-HULL**

Injection Molded Acetel



Bulk	Display	A	B	C	D	E	F	Wt.(lb.)	Std. Pack
520690	520690-1	2-13/16"	1-1/4"	3-11/16"	5-13/16"	1-13/16"	1-1/2" Hose	.33	10 ea

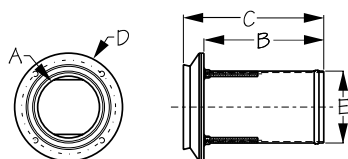
**THRU-HULL**

Injection Molded Polypropylene



Bulk	Display	A	B	C	D	E	F	Color	Wt.(lb.)	Std. Pack
520740	520740-1	1-3/4"	1/2"	1-11/16"	3-1/2"	1"	5/8"	White	.07	10 ea
520750	520750-1	1-13/16"	1/2"	1-11/16"	3-1/2"	1"	3/4"	White	.07	10 ea
520750B	n/a	1-13/16"	1/2"	1-11/16"	3-1/2"	1"	3/4"	Black	.07	10 ea
520770	520770-1	2-3/16"	15/16"	1-3/4"	3-9/16"	1-3/8"	1-1/8" - 1-1/4"	White	.12	10 ea
520770B	n/a	2-3/16"	15/16"	1-3/4"	3-9/16"	1-3/8"	1-1/8" - 1-1/4"	Black	.12	10 ea
520790	520790-1	2-7/8"	1-3/16"	2-5/16"	4-3/16"	1-13/16"	1-1/2"	White	.23	10 ea
520790B	n/a	2-7/8"	1-3/16"	2-5/16"	4-3/16"	1-13/16"	1-1/2"	Black	.23	10 ea

These Thru-Hulls are ideal for salt water use because they are impervious to electrolysis and corrosion. Designed to allow water to pass in or out of a vessel. For use with hose for drainage above the water line. Constructed of injection molded polypropylene.

**EXHAUST THRU-HULL**

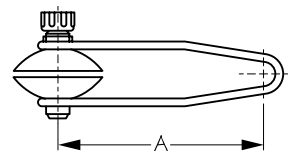
Cast 316 Stainless Steel



Bulk	Display	A	B	C	D	E (Hose Size)	Wt.(lb.)	Std. Pack
521125	n/a	2-9/16"	5"	5-7/8"	4-1/2"	2-1/2"	1.50	1 ea
521130	n/a	2-9/16"	5"	5-7/8"	4-1/2"	3"	1.94	1 ea

The Exhaust Thru-Hull features a stainless flap with a rubber seal. Designed for use with 2-1/2" or 3" ID hose. Constructed of corrosion resistant investment cast 316 stainless steel. Includes mounting plate and fasteners.

▲ **WARNING:** Cancer and Reproductive Harm - www.P65Warnings.ca.gov

**MOTOR FLUSH**

Molded PVC/Painted Steel



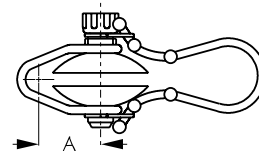
Bulk	Display	A	Wt.(lb.)	Std. Pack
n/a	521500-1	9"	.98	1 ea

Outboard Motor Flush quickly flushes away salt, sand, minerals, and contaminants from your lower unit cooling system, extending the engine's service life. Easy-to-use molded PVC cups deliver fresh water to flush the cooling system through side intakes on the lower unit. Simple garden hose connection, no tools required. Great for winterizing, tune-ups, and other maintenance that requires running an outboard engine out of the water.

▲ **WARNING:** Cancer and Reproductive Harm - www.P65Warnings.ca.gov

VOLVO MOTOR FLUSH

Molded PVC/Painted Steel



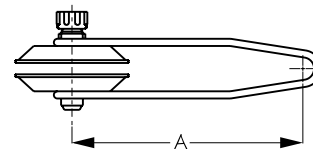
Bulk	Display	A	Wt.(lb.)	Std. Pack
n/a	521510-1	2-3/8"	.63	1 ea

Volvo Outboard Motor Flush quickly flushes away salt, sand, minerals, and contaminants from your lower unit cooling system, extending the engine's service life. Easy-to-use molded PVC cups deliver fresh water to flush the cooling system through side intakes on the lower unit. Simple garden hose connection, no tools required. Great for winterizing, tune-ups, and other maintenance that requires running an outboard engine out of the water. Designed specifically for use with Volvo engines.

⚠ **WARNING:** Cancer and Reproductive Harm - www.P65Warnings.ca.gov

RECTANGULAR MOTOR FLUSH

Molded PVC/Painted Steel



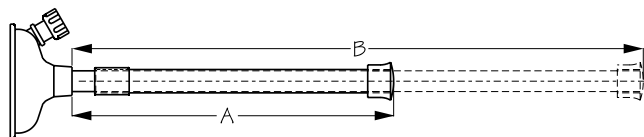
Bulk	Display	A	Wt.(lb.)	Std. Pack
n/a	521520-1	10-3/16"	.90	1 ea

Outboard Rectangular Motor Flush quickly flushes away salt, sand, minerals, and contaminants from your lower unit cooling system, extending the engine's service life. Easy-to-use molded PVC cups deliver fresh water to flush the cooling system through side intakes on the lower unit. Simple garden hose connection, no tools required. Great for winterizing, tune-ups, and other maintenance that requires running an outboard engine out of the water. Features rectangular cups for use with larger outboards.

⚠ **WARNING:** Cancer and Reproductive Harm - www.P65Warnings.ca.gov

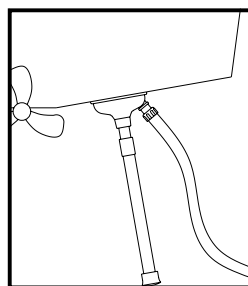
INBOARD MOTOR FLUSH

Molded Rubber/Aluminum



Bulk	Display	A	B	Wt.(lb.)	Std. Pack
n/a	521550-1	15-1/2"	27-1/2"	.99	1 ea

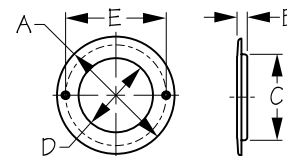
Inboard Motor Flush quickly flushes away salt, sand, minerals, and contaminants from your lower unit cooling system extending the engine's service life. Easy-to-use by fitting the rubber cup over the water intake, connecting a garden hose, and extending the aluminum leg to seal the cup to the hull. Fresh water flushes the cooling system, no tools required. Great for winterizing, tune-ups, and other maintenance that requires running an inboard engine out of the water.



⚠ **WARNING:** Cancer and Reproductive Harm - www.P65Warnings.ca.gov

HOLE LINER

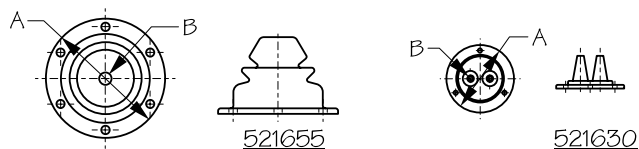
Injection Molded Polyethylene



Bulk	Display	Color	A	B	C	D	E	Wt.(lb.)	Std. Pack
521600	521600-1	Black	4-1/16"	3/8"	3"	2-9/16"	3-1/2"	.04 / .08	10 ea / 10 pr
521601	521601-1	White	4-1/16"	3/8"	3"	2-9/16"	3-1/2"	.04 / .08	10 ea / 10 pr

This Hole Liner grommet is used to protect wires or cables passing through bulkheads. Protective liner with small lip for access holes. Constructed of injection molded polyethylene. Installs with two FH fasteners (not included). Available in black or white.

⚠ **WARNING:** Cancer and Reproductive Harm - www.P65Warnings.ca.gov

**MOTOR WELL BOOT**

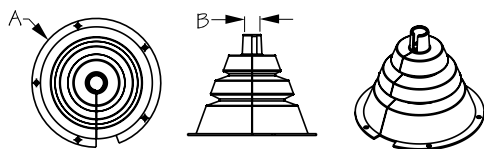
Molded Rubber



Bulk	Display	A	B	Fastener	Wt.(lb.)	Std. Pack
521630	521630-1	3"	3/16"	#8 RH	.06	10 ea / 1 ea
521655	521655-1	5-1/2"	9/16"	#8 RH	.36	10 ea / 1 ea

Motor Well Boot organizes and protects engine control cables, wires, or fuel lines. Black accordion-style seal. Includes mounting ring. Constructed of UV stabilized molded rubber. Installs with #8 RH fasteners (not included).

⚠ **WARNING:** Cancer and Reproductive Harm - www.P65Warnings.ca.gov

**MOTOR WELL BOOT - SPLIT**

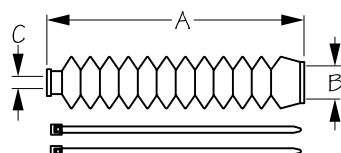
Molded Rubber/Injection Molded Nylon



Bulk	Display	A	B	Fastener	Wt.(lb.)	Std. Pack
521663	521663-1	4-1/8"	1/2"	#8 RH	.13	10 ea / 5 ea
521664	521664-1	5-1/2"	9/16"	#8 RH	.23	10 ea / 5 ea

Split Motor Well Boot organizes and protects engine control cables, wires, or fuel lines. Black accordion-style seal. Includes cable tie and mounting ring. Boots and rings are cut for trouble-free installation without removal of cables. Constructed of UV stabilized molded rubber with injection molded nylon rings. Installs with five #8 RH fasteners (not included).

⚠ **WARNING:** Cancer and Reproductive Harm - www.P65Warnings.ca.gov

**STEERING CABLE BOOT**

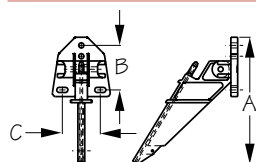
Molded Rubber



Bulk	Display	A	B	C	Wt.(lb.)	Std. Pack
521700	521700-1	8"	1"	3/8"	.13	10 ea / 1 ea

Steering Cable Boot protects the output end of all standard steering cables keeping dirt, debris, and moisture out and extending the service life of the cable. Includes two cable ties. Constructed of durable molded rubber.

⚠ **WARNING:** Cancer and Reproductive Harm - www.P65Warnings.ca.gov

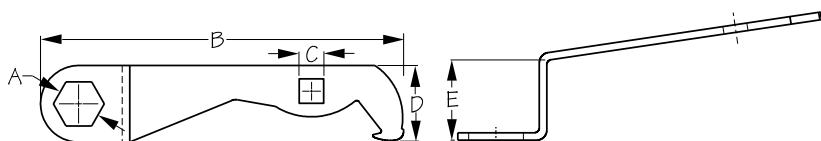
**SPEEDOMETER PITOT TUBE**

Injection Molded Nylon



Bulk	Display	A	B	C	Fastener	Wt.(lb.)	Std. Pack
522100	522100-1	4-7/16"	1-5/8"	1-3/8"	#10 RH	.12	1 ea
n/a	522105-1	Speedometer Pitot Tube Installation Kit				.16	1 ea
n/a	522100-5	Display POP-Speedometer Pitot Tube-10 pcs.				1.33	1 ea

This Pitot Tube features a universal design that works with most Speedometers. The 522100 (including -1 packaged & -5 POP) is a Pitot Tube only. The Pitot Tube Installation Kit (522105-1, pictured) includes everything you need for a successful installation: the pitot tube, a tube shield, four cable clamps, and mounting screws. Constructed of injection molded nylon.

**PROP WRENCH**

Zinc Plated Steel



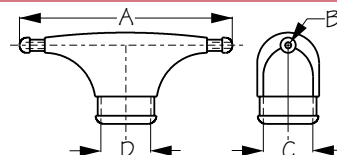
Bulk	Display	A	B	C	D	E	Wt.(lb.)	Std. Pack
531112	n/a	1-1/16"	8-7/8"	9/16"	13/16"	2"	.60	5 ea

The zinc plated steel Prop Wrench tightens all standard 1-1/16" prop nuts. Compact size for just the right leverage. This multi-tool fits garboard drain plugs with 9/16" square heads and includes an integrated pin on the handle tip to bend tab washers.

⚠ **WARNING:** Cancer and Reproductive Harm - www.P65Warnings.ca.gov

**SPREADER BOOT**

Rubber



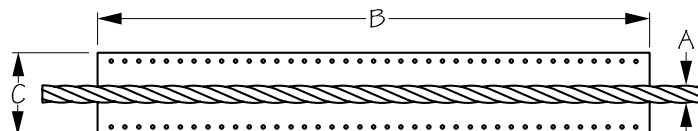
Bulk	Display	A	B (Wire Size)	C	D	Wt.(lb.)	Std. Pack
560103	560103-1	4-5/8"	1/8"	5/8"	n/a	.09 / .18	10 ea / 5 pr
560105	560105-1	5-3/4"	3/16"	1"	n/a	.13 / .26	10 ea / 5 pr
560106	560106-1	5-3/4"	1/4"	2"	1"	.30 / .60	10 ea / 5 pr

Spreader Boots are designed to cover spreaders providing sail chafe protection. Aerodynamic they reduce drag and prevent sails from ripping or tearing from constant contact with spreader ends or shrouds. Constructed of UV resistant rubber. Easy to install. Three sizes available to match wire diameter. 560106 pictured.

⚠ **WARNING:** Cancer and Reproductive Harm - www.P65Warnings.ca.gov

**MOORING LINE CHAFE KIT**

Leather



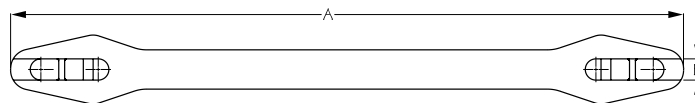
Bulk	Display	A	B	C	Wt.(lb.)	Std. Pack
n/a	561010-1	3/8" & 7/16"	10"	1-1/2"	.08	10 pr
n/a	561012-1	1/2"	10"	1-3/4"	.08	10 pr
n/a	561016-1	5/8"	10"	2-1/8"	.11	10 pr
n/a	561019-1	3/4"	10"	2-1/2"	.14	10 pr

Mooring Line Chafe Kits includes waxed twine, heavy duty needle, and (2) 10" pieces of leather pre-stamped for sewing. Used to reduce chafe and extend the life of mooring lines. Constructed of natural leather (color may vary).

⚠ **WARNING:** Cancer and Reproductive Harm - www.P65Warnings.ca.gov

**SNUBBER**

Rubber



Bulk	Display	A	B	Wt.(lb.)	Std. Pack
561512	n/a	17-1/8"	3/8"	.63	1 ea
561516	n/a	19-3/4"	1/2" - 9/16"	1.12	1 ea
561520	n/a	21-1/2"	5/8" - 3/4"	1.14	1 ea

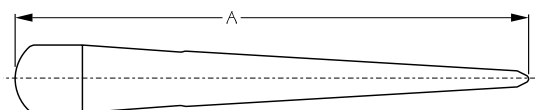
Mooring Snubbers absorb shock loads and relieve tension on lines and deck fittings. The length of compensating movement can be adjusted by the number of line turns around the snubber, mitigating the effects of wind and waves. Easy to use, requiring no extra hardware. Ideal for use in tidal areas, on exposed moorings, or in towing situations. Constructed of high quality rubber to resist sunlight, saltwater, and ozone.



⚠ **WARNING:** Cancer and Reproductive Harm - www.P65Warnings.ca.gov

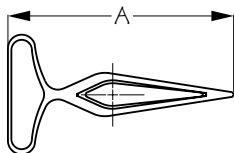
**SPLICING FID**

Stainless Steel w/ Hardwood Handle



Bulk	Display	For Line Size	A	Wt.(lb.)	Std. Pack
n/a	562008-1	1/8" - 1/2"	6-13/16"	.08	10 ea
n/a	562016-1	1/2" and up	11"	.29	10 ea

This Splicing Fid's time tested design make it the ideal tool for expert rope splicing. Features a hardwood handle for ease of operation and a precision tip for better splices, neater braids, and improved rope performance. Rugged and durable, this fid ensures successful rope splicing every time. Constructed of stainless steel with a hardwood handle.

**SPLICING FID**

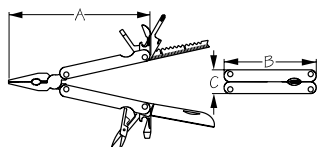
Bronze



Bulk	Display	For Line Size	A	Wt.(lb.)	Std. Pack
562060	562060-1	Up to 1"	5-3/4"	.18	1 ea

T-handle Splicing Fid gives great leverage for splicing up to 1" line. Constructed of solid bronze.

⚠ **WARNING:** Cancer and Reproductive Harm - www.P65Warnings.ca.gov

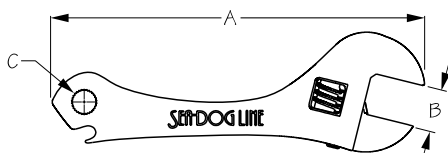
**MULTI-TOOL**

304 Stainless Steel



Bulk	Display	A	B	C	Wt.(lb.)	Std. Pack
n/a	563151-1	6"	3-15/16"	1"	.31	1 ea

This handy Multi-Tool includes a knife, needle nose pliers, cutters, scissors, various screw drivers, bottle opener, file, and saw. Constructed of corrosion resistant stamped 304 stainless steel. A must have for every tool bag! Includes canvas carrying case.

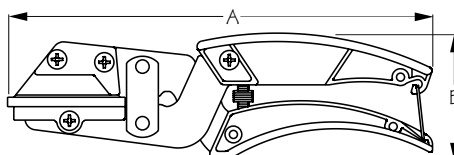
**ADJUSTABLE WRENCH**

Cast 17-4PH Stainless Steel



Bulk	Display	A	B	C	Wt.(lb.)	Std. Pack
563255	563255-1	5-1/2"	3/4"	1/4" Hex Head	.34	1 ea

This Adjustable Wrench features an additional 1/4" hex head socket and bottle opener. Constructed of cast 17-4PH grade stainless steel this tool is designed to last a lifetime under any conditions. A great addition to any tool box.

**MULTIPURPOSE CUTTER**

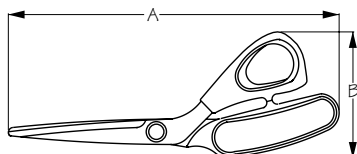
Powder Coated Steel



Bulk	Display	A	B	Wt.(lb.)	Std. Pack
n/a	563310-1	9-1/2"	2-5/8"	.73	1 ea
n/a	563311-1	Replacement Anvils		.03	1 pr

This Multipurpose Cutter is great for cutting rope, wire, and plastic tubing. Includes two spare utility blades stored in the handle. Replacement Anvils (563311) sold separately. A great addition to any tool box.

⚠ **WARNING:** Cancer and Reproductive Harm - www.P65Warnings.ca.gov

**HEAVY DUTY CANVAS & UPHOLSTERY SCISSORS**

304 Stainless Steel/Injection Molded Nylon

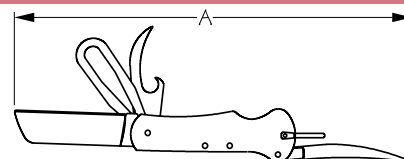


Bulk	Display	A	B	Wt.(lb.)	Std. Pack
n/a	563320-1	8-1/4"	3-1/4"	.24	1 ea

These quality stainless steel Heavy Duty Canvas & Upholstery Scissors are designed with offset handles to allow the blades to hug the work surface, giving you clean and precise cutting characteristics with both thin and thick materials. Constructed with a heavy duty stainless steel blade for optimum performance and long-lasting sharpness. Fine, precision-ground, serrated edge ensures effortless cutting. Comfortable soft cushion grip and adjustable blade tension to reduce fatigue. Ideal for all heavy duty cutting including rubber, vinyl, leather, plastics, cordage, upholstery, Kevlar, and canvas.

**RIGGING KNIFE**

304 Stainless Steel

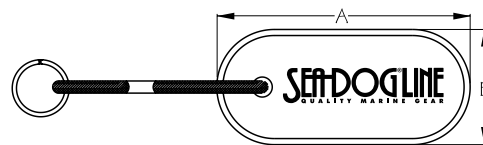


Bulk	Display	A	Blade Length	Marlin Spike Length	Wt.(lb.)	Std. Pack
565050	565050-1	8-7/16"	2-1/2"	2-1/2"	.25	1 ea

This handy Rigging Knife includes a sharp blade, Marlin spike, shackle key, screw driver, bottle opener, and a loop to attach a lanyard (not included). Constructed of corrosion resistant 304 stainless steel. A great addition to any tool box.

**CORK KEY FLOAT**

Cork



Bulk	Display	A	B	Wt.(lb.)	Std. Pack
n/a	568010-1	4-1/8"	1-7/8"	.08	10 ea

The Cork Key Float is lightweight and buoyant making it ideal for use around water. Cork material is naturally resistant to liquid.

⚠ **WARNING:** Cancer and Reproductive Harm - www.P65Warnings.ca.gov

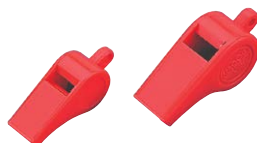
**LED WATERPROOF FLASH LIGHT**

Aluminum

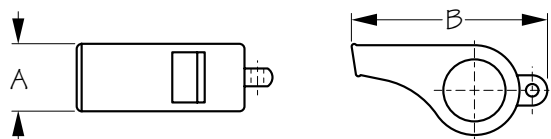


Bulk	Display	A	B	Wt.(lb.)	Std. Pack
n/a	570105-1	4-7/16"	1"	.22	1 ea

The LED Waterproof Flash Light is constructed of aircraft grade aluminum, making it lightweight and durable. Includes 3 AAA batteries. IP67 waterproof rating.

**POLICE WHISTLE**

Injection Molded Polystyrene

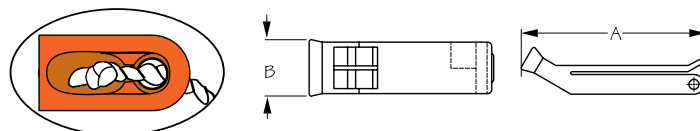


Bulk	Display	Color	Lanyard Included	A	B	Wt.(lb.)	Std. Pack
571252	571252-1	Orange	No/Yes	13/16"	2-5/16"	.02 / .03	10 ea
571286	571286-1	Orange	No/Yes	11/16"	2"	.01 / .02	10 ea
n/a	571252-5	Display POP-Police Whistle-35 pcs.				1.63	1 ea

This Police Whistle meets USCG requirements for a warning device on small craft. Bright orange color makes it easy to locate in an emergency. Constructed of injected molded polypropylene. Display packaging includes 36" lanyard.

**SEA-DOG® WHISTLE**

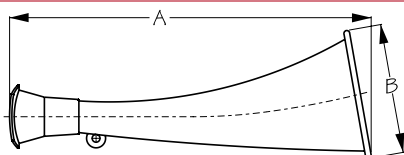
Injection Molded Polypropylene



Bulk	Display	Color	Lanyard Included	A	B	Wt.(lb.)	Std. Pack
571260	571260-1	Orange	No/Yes	2-3/4"	7/8"	.02	10 ea
n/a	571260-5	Display POP-Sea-Dog Whistle-40 pcs.				1.05	1 ea

Duo-tone Sea-Dog® Whistle has no moving parts or balls that can jam or corrode. Meets USCG requirements for use on PFDs. Handy clip secures whistle until needed. Constructed of injected molded polypropylene. Display packaging includes 36" lanyard.

⚠ **WARNING:** Cancer and Reproductive Harm - www.P65Warnings.ca.gov

**MANUAL AIR HORN**

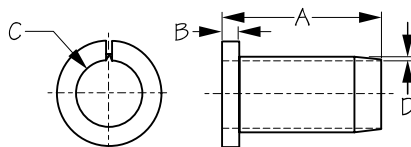
Injection Molded ABS



Bulk	Display	A	B	Wt.(lb.)	Std. Pack
n/a	572025-1	7-7/8"	2-13/16"	.07	5 ea

Manual Air Horn is for use in small boats without electrical power or for larger boats in emergencies where power is no longer available. Bright orange color makes it easy to locate. Constructed of impact resistant injection molded ABS. Includes 18" lanyard.

▲ **WARNING:** Cancer and Reproductive Harm - www.P65Warnings.ca.gov

**ADJUSTABLE OAR COLLARS**

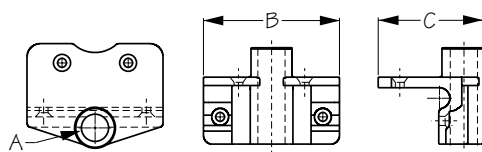
Injection Molded Polyethylene



Bulk	Display	A	B	C	D	Wt.(lb.)	Std. Pack
580101	580101-1	4-3/16"	7/16"	1-3/4"	1/8"	.30	1 pr

These Adjustable Oar Collars fit standard oars, but can be trimmed for smaller ones. These collars cushion stroke, reduce noise, and prevent wear. Split cover makes it quick and easy to install with brass nails (included). Constructed of rugged, flexible polyethylene.

▲ **WARNING:** Cancer and Reproductive Harm - www.P65Warnings.ca.gov

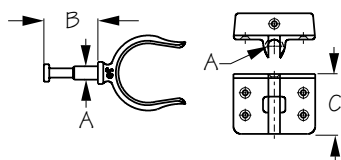
**ANGLED OARLOCK SOCKET**

Injection Molded Nylon



Bulk	Display	Type	A	B	C	Wt.(lb.)	Std. Pack
580143	580143-1	Angled	1/2"	3-1/16"	2-3/8"	.13 / .26	10 ea / 10 pr

Angled Oarlock Sockets accommodate 1/2" oarlock shafts. Constructed of injection molded nylon. Angle mounts securely to gunwale with four #10 FH fasteners (not included).

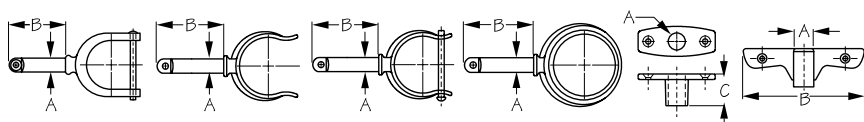
**DAVIS OARLOCK & SOCKET**

Investment Cast 316 Stainless Steel



Bulk	Display	Type	A	B	C	Wt.(lb.)	Std. Pack
580310	580310-1	Side Mount	1/2"	2"	2-1/4"	1.94	10 ea

This side mount Davis Oarlock & Socket lifts up in the socket, then swings down to hang out of the way inside the boat when not in use. Constructed of corrosion resistant investment cast 316 stainless steel. Installs with five FH fasteners (not included).

**OARLOCK & SOCKET**

Die Cast Zinc Chromed Plated



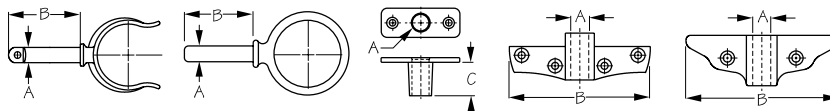
Bulk	Display	Type	A	B	C	Wt.(lb.)	Std. Pack
580411	580411-1	Horn Pin 1-5/8"	1/2"	2-1/4"		.56	10 pr
580412	580412-1	Ribbed 2"	1/2"	2-1/4"		.52	10 pr
580413	580413-1	Ribbed Pin 2"	1/2"	2-1/4"		.56	10 pr
580425	580425-1	Round Horn 2"	1/2"	2-1/4"		.58	10 pr
580450	580450-1	Top Mount	1/2"		1-3/16"	.34	10 pr
580451	580451-1	Angle Mount	1/2"	4-5/8"		.56	10 pr

Designed for light service duty these Oarlocks & Sockets are an excellent choice for aluminum vessels because they do not cause galvanic corrosion issues. The pin style and round horns secure the oar in place in all sea conditions. Constructed of die cast chrome plated zinc. Recommended for freshwater use.

▲ **WARNING:** Cancer and Reproductive Harm - www.P65Warnings.ca.gov

OARLOCK & SOCKET

Cast Brass/Polyethylene



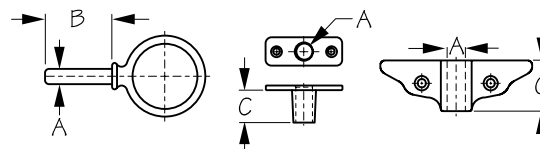
Bulk	Display	Type	A	B	C	Wt.(lb.)	Std. Pack
580570	580570-1	Ribbed 2"	1/2"	2-1/8"		.88	10 pr / 5 pr
580590	580590-1	Round Horn 2"	1/2"	2-1/8"		.61	10 pr / 5 pr
580591	580591-1	Round Horn 2-1/4"	1/2"	2"		1.29	10 pr / 5 pr
580600	580600-1	Top Mount	1/2"		1-1/16"	.27	10 pr / 5 pr
580610	580610-1	Side Mount	1/2"	3-3/4"		.47	10 pr / 5 pr
580620	580620-1	Angle Mount	1/2"	4"		.59	10 pr / 5 pr
580699	n/a	Mount Insert	1/2"		1-1/16"	.01	10 ea

These Oarlocks & Sockets feature traditional styling. Oarlocks are available in 2" or 2-1/8" sizes with a 1/2" shaft. The pin style and round horns secure the oar in place in all sea conditions. Oarlock mounts accept 1/2" shafts and feature polyethylene inserts (580699) for smooth rotation. Constructed of durable sand cast brass.

⚠ **WARNING:** Cancer and Reproductive Harm - www.P65Warnings.ca.gov

OARLOCK & SOCKET

Hot Dipped Galvanized Malleable Iron



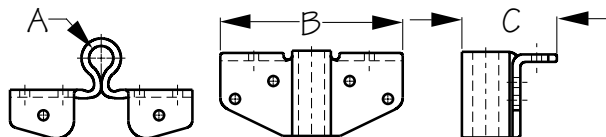
Bulk	Display	Type	A	B	C	Wt.(lb.)	Std. Pack
580870	580870-1	Round Horn 2"	1/2"	2"		.93	10 pr
580871	580871-1	Round Horn 2-3/16"	1/2"	2"		1.19	10 pr
580880	580880-1	Top Mount	1/2"		1-1/16"	.31	10 pr
580890	580890-1	Angle Mount	1/2"		1-3/16"	.36	10 pr

Oarlocks & Sockets feature a round horn style that secures the oar in place in all sea conditions. Constructed of hot dipped, galvanized, malleable iron they are an economical alternative to stainless or brass.

⚠ **WARNING:** Cancer and Reproductive Harm - www.P65Warnings.ca.gov

HEAVY DUTY ANGLED OARLOCK SOCKET

Zinc Plated Steel



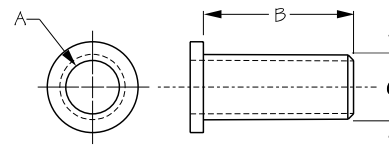
Bulk	Display	Type	A	B	C	Wt.(lb.)	Std. Pack
582050	582050-1	Angled	1/2"	3-1/2"	1-7/8"	.72	10 pr

The Heavy Duty Oarlock Socket angle mounts securely to the gunwale and accommodates 1/2" oarlock shafts. Constructed of zinc plated steel. Installs with six #10 RH fasteners (not included). Recommended for freshwater use.

⚠ **WARNING:** Cancer and Reproductive Harm - www.P65Warnings.ca.gov

OARLOCK BUSHING

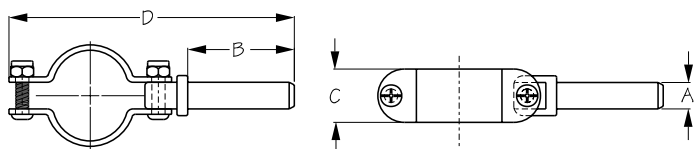
Injection Molded Polypropylene



Bulk	Display	A	B	C	Wt.(lb.)	Std. Pack
582059	582059-1	1/2"	1-9/16"	5/8"	.02	10 pr

Oarlock Bushing reduces 5/8" oarlock sockets down to 1/2". Durable injection molded polypropylene construction.

⚠ **WARNING:** Cancer and Reproductive Harm - www.P65Warnings.ca.gov

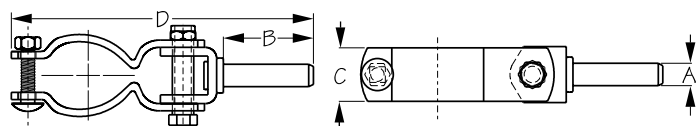
**CLAMP-ON OARLOCK**

Zinc Plated Steel



Bulk	Display	A	B	C	D	Wt.(lb.)	Std. Pack
582060	582060-1	1/2"	2"	1"	5-3/8"	.82	10 pr

Clamp-On Oarlocks attach quickly to oar shafts with an easy to install bolted clamp. For use with oars between 3/4" and 1-7/16" in diameter they feature a standard 1/2" x 2" pin. Zinc plated steel construction. Recommended for freshwater use.

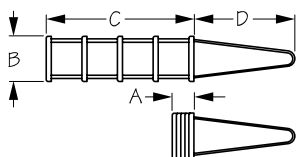
**HEAVY DUTY CLAMP-ON OARLOCK**

Zinc Plated Steel



Bulk	Display	A	B	C	D	Wt.(lb.)	Std. Pack
n/a	582070-1	1/2"	2"	1-3/16"	6-3/4"	1.79	10 pr
n/a	582072-1	9/16"	2"	1-3/16"	6-3/4"	1.82	10 pr

Heavy Duty Clamp-On Oarlocks feature an easy to install bolted clamp that is adjustable to fit most standard oars. Straight 2" long shank. Constructed of heavy gauge zinc plated steel. Recommended for freshwater use.

**FOLDING LADDER**

Injection Molded Polycarbonate

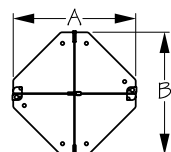


Bulk	Display	A	B	C	D	Steps	Wt.(lb.)	Std. Pack
n/a	582501-1	6"	11-3/4"	3' 2"	2' 4"	5	3.00	1 ea
n/a	582502-1	4-5/8"	11-3/4"	2' 5"	2' 4"	4	2.50	1 ea
n/a	582503-1	3-1/2"	11-3/4"	1' 6"	2' 4"	3	2.00	1 ea
OP58202	n/a	Replacement Step					.26	1 ea
OP58203	n/a	Replacement Separator Tube					.08	1 ea

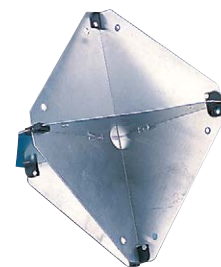
These portable emergency Folding Ladders are made of molded-in, high-visibility orange polycarbonate with nylon rope supporting the frame. They secure quickly to cleats, railings, stanchions, and halyards. Supports up to 300 lbs.

- Available in custom colors for large volume orders.

⚠ **WARNING:** Cancer and Reproductive Harm - www.P65Warnings.ca.gov

**RADAR REFLECTOR**

Stamped Aluminum



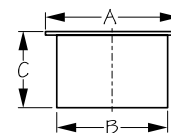
Bulk	Display	A	B	Wt.(lb.)	Std. Pack
583422	n/a	10-3/4"	10-3/4"	.80	1 ea

Designed to reflect radar energy back to a radar antenna making a small vessel more detectable in fog or low visibility situations. The Radar Reflector's improved design has built-in, quick connect corner brackets. Constructed of stamped aluminum. Folds flat for storage.



FLUSH MOUNT DRINK HOLDER

Injection Molded Polystyrene



Bulk	Display	Hole Required	Color	A	B	C	Wt.(lb.)	Std. Pack
588000	n/a	3"	Black	3-3/8"	2-7/8"	2"	.06	10 ea
588001	n/a	3"	White	3-3/8"	2-7/8"	2"	.06	10 ea
588002	n/a	3"	Gray	3-3/8"	2-7/8"	2"	.06	10 ea
588010	n/a	3"	Black	3-3/8"	2-7/8"	3"	.10	10 ea
588011	n/a	3"	White	3-3/8"	2-7/8"	3"	.10	10 ea
588012	n/a	3"	Gray	3-3/8"	2-7/8"	3"	.10	10 ea
588050	n/a	3-3/4"	Black	4-1/8"	3-5/8"	2-5/16"	.11	10 ea
588051	n/a	3-3/4"	White	4-1/8"	3-5/8"	2-5/16"	.11	10 ea

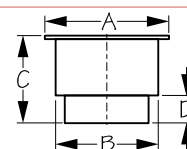
Flush Mount Drink Holders (588000-588012) accommodate drink containers up to 2-7/8" in diameter and require a 3" diameter hole for installation. Available in a 2" or 3" depth in black, white, or gray. Flush Mount Drink Holders (588050-588051) accommodate drink containers up to 3-5/8" in diameter and require a 3-3/4" diameter hole for installation. 2-5/16" deep in black or white. Constructed of impact resistant injection molded polystyrene.

⚠ WARNING: Cancer and Reproductive Harm - www.P65Warnings.ca.gov



FLUSH MOUNT COMBO DRINK HOLDER

Injection Molded ABS



Bulk	Display	Hole Required	Drain Holes	Color	A	B	C	D	Wt.(lb.)	Std. Pack
588060	n/a	3-3/4"	Yes	Black	4"	3-5/8"	3-1/4"	15/16"	.13	10 ea
588060NH	n/a	3-3/4"	No	Black	4"	3-5/8"	3-1/4"	15/16"	.13	10 ea
588061	n/a	3-3/4"	Yes	White	4"	3-5/8"	3-1/4"	15/16"	.13	10 ea
588062	n/a	3-3/4"	Yes	Gray	4"	3-5/8"	3-1/4"	15/16"	.13	10 ea

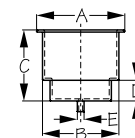
Flush Mount Combo Drink Holders feature a dual-purpose design which allows the use of beverage cans with or without insulated can wraps, as well as most standard size bottles. Installation requires a 3-3/4" diameter hole. All holders (except 588060NH) include drain holes. Available in black, white, or gray. Constructed of impact resistant injection molded ABS.

⚠ WARNING: Cancer and Reproductive Harm - www.P65Warnings.ca.gov



FLUSH MOUNT COMBO DRINK HOLDER W/DRAIN FITTING

Injection Molded ABS



Bulk	Display	Hole Required	Color	A	B	C	D	E	Wt.(lb.)	Std. Pack
588060N	n/a	3-3/4"	Black	4"	3-5/8"	3-1/4"	15/16"	5/16"	.14	10 ea
588061N	n/a	3-3/4"	White	4"	3-5/8"	3-1/4"	15/16"	5/16"	.14	10 ea
588062N	n/a	3-3/4"	Gray	4"	3-5/8"	3-1/4"	15/16"	5/16"	.14	10 ea

Flush Mount Combo Drink Holders feature a dual-purpose design which allows the use of beverage cans with or without insulated can wraps, as well as most standard size bottles. Integral drain fitting allows water to be drained directly into the bilge with the use of 1/4" tubing (not included). Requires a 3-3/4" diameter hole for installation. Available in black, white or gray. Constructed of impact resistant injection molded ABS.

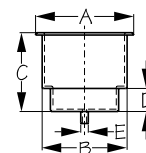
- Special Order Requirements May Apply
- Custom Colors Available With Large Order

⚠ WARNING: Cancer and Reproductive Harm - www.P65Warnings.ca.gov



FLUSH MOUNT COMBO DRINK HOLDER W/ DRAIN FITTING

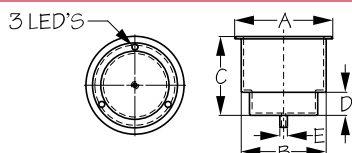
Stamped 304 Stainless Steel



Bulk	Display	Hole Required	A	B	C	D	E	Wt.(lb.)	Std. Pack
588065	n/a	3-5/8"	4-1/4"	3-5/8"	3-3/16"	3/4"	1/4"	.26	5 ea

Flush Mount Combo Drink Holders with Drain Fittings feature a dual-purpose design that allows the use of beverage cans with or without insulated wraps, as well as most standard size bottles. Integral drain fitting allows water to be drained directly into the bilge with the use of 1/4" tubing (not included). Requires a 3-5/8" diameter hole for installation. The bottom is padded with a rubber insert to prevent rattling. Includes mounting gasket. Constructed of corrosion resistant stamped 304 stainless steel.

⚠ WARNING: Cancer and Reproductive Harm - www.P65Warnings.ca.gov

**LED FLUSH MOUNT COMBO DRINK HOLDER W/ DRAIN FITTING**

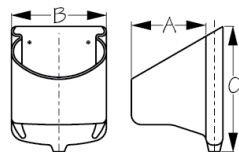
Stamped 304 Stainless Steel



Bulk	Display	Hole Required	A	B	C	D	E	LED Color	Wt.(lb.)	Std. Pack
588071	588071-1	3-5/8"	4-1/4"	3-5/8"	3-3/16"	3/4"	1/4"	3 Red	.27	5 ea
588074	588074-1	3-5/8"	4-1/4"	3-5/8"	3-3/16"	3/4"	1/4"	3 Blue	.27	5 ea

The LED Flush Mount Combo Drink Holder features a dual-purpose design that allows the use of beverage cans with or without insulated wraps, as well as most standard size bottles. Three red or blue LEDs provide night vision. Integral drain fitting allows water to be drained directly into bilge with the use of 1/4" tubing (not included). Requires a 3-5/8" diameter hole for installation. The bottom is padded with a rubber insert to prevent rattling. Constructed of corrosion resistant stamped 304 stainless steel. 12VDC.

⚠ **WARNING:** Cancer and Reproductive Harm - www.P65Warnings.ca.gov

**DRINK HOLDER**

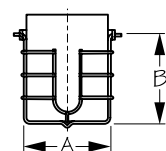
PVC



Bulk	Display	A	B	C	Wt.(lb.)	Std. Pack
n/a	588115-1	2-3/4"	3-1/2"	4-5/8"	.30	5 ea

Side mounted Drink Holder accommodates beverage containers up to 3-1/2". Constructed of soft PVC.

⚠ **WARNING:** Cancer and Reproductive Harm - www.P65Warnings.ca.gov

**SWIVEL DRINK HOLDER**

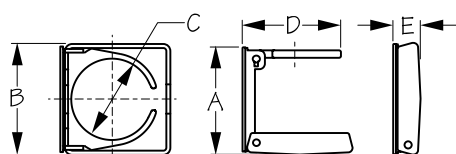
Brass Wire Chrome Plated



Bulk	Display	A	B	Wt.(lb.)	Std. Pack
n/a	588130-3	3-1/2"	3-3/4"	.42	1 ea

Swivel Drink Holder features a quick release bracket for easy removal. Includes foam insulator, two wall brackets for flexible placement, and installation fasteners. Fits most cans, glasses, and mugs with handles. Constructed of chrome plated brass wire.

⚠ **WARNING:** Cancer and Reproductive Harm - www.P65Warnings.ca.gov

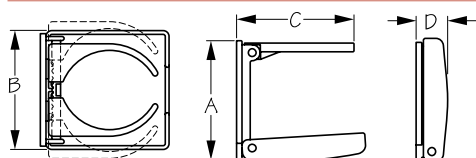
**FOLDING DRINK HOLDER**

Injection Molded ABS



Bulk	Display	Color	A	B	C	D	E	Wt.(lb.)	Std. Pack
588210	588210-1	Black	3-3/4"	3-7/8"	2-3/4"	3-7/16"	15/16"	.19	10 ea
588211	588211-1	White	3-3/4"	3-7/8"	2-3/4"	3-7/16"	15/16"	.19	10 ea

Folding Drink Holder folds to a closed depth of 15/16". Accommodates containers up to 2-3/4" in diameter. Constructed of impact resistant injection molded ABS. Installs with four #6 FH fasteners (not included). Available in black or white.

**ADJUSTABLE FOLDING DRINK HOLDER**

Injection Molded Nylon



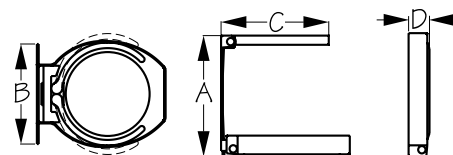
Bulk	Display	A	B	C	D	Color	Fastener	Wt.(lb.)	Std. Pack
588220	588220-1	3-7/8"	3-3/4"	3-11/16"	1"	Black	#6 FH	.22	10 ea
588221	588221-1	3-7/8"	3-3/4"	3-11/16"	1"	White	#6 FH	.22	10 ea

Adjustable Folding Drink Holder folds to a closed depth of 1". Accommodates containers up to 3-7/8" in diameter. Constructed of impact resistant injection molded nylon. Installs with four #6 FH fasteners (not included). Available in black or white.



ADJUSTABLE FOLDING DRINK HOLDER

Stamped 304 Stainless Steel



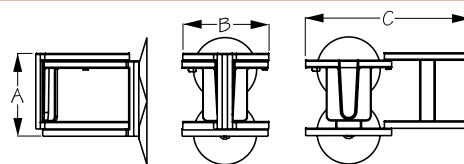
Bulk	Display	A	B	C	D	Fastener	Wt.(lb.)	Std. Pack
588250	588250-1	4-1/8"	3-7/16"	3-5/8"	3/4"	#8 RH	.41	10 ea

The Adjustable Folding Drink Holder folds to a closed depth of 3/4". Accommodates drink containers up to 3-7/8" in diameter. Constructed of corrosion resistant stamped 304 stainless steel. Installs with two #8 RH fasteners (not included).



SINGLE/DUAL DRINK HOLDER WITH SUCTION CUPS

Injection Molded Nylon



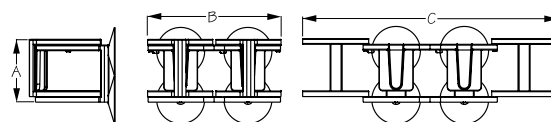
Bulk	Display	A	B	C	Wt.(lb.)	Std. Pack
n/a	588510-1	4-1/8"	4-1/4"	8-1/8"	.36	6 ea

Single/Dual Drink Holder with Suction Cups expands from single to dual holders conserving space when not in use. Suction cups offer a flexible solution, mounting easily to most surfaces. Accommodates drink containers up to 3-1/2" in diameter. Constructed of impact resistant injection molded nylon.



DUAL/QUAD DRINK HOLDER W/ SUCTION CUPS

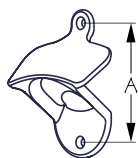
Injection Molded Nylon



Bulk	Display	A	B	C	Wt.(lb.)	Std. Pack
n/a	588520-1	4-1/8"	8-1/8"	16-3/8"	.76	6 ea

Dual/Quad Drink Holder with Suction Cups expands from dual to quad holders conserving space when not in use. Suction Cups offers a flexible solution, mounting easily to most surfaces. Accommodates drink containers up to 3-1/2" in diameter. Constructed of impact resistant injection molded nylon.

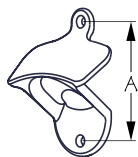


**BOTTLE OPENER**

Investment Cast 316 Stainless Steel

Bulk	Display	A	Fastener	Wt.(lb.)	Std. Pack
588450	588450-1	2-3/8"	#6 FH	.17	1 ea

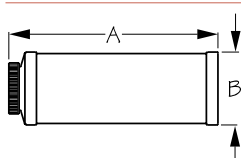
Bottle Opener installs with two #6 FH fasteners (not included). Constructed of corrosion resistant cast 316 stainless steel.

**SEA-DOG® BOTTLE OPENER**

Investment Cast 316 Stainless Steel

Bulk	Display	A	Fastener	Wt.(lb.)	Std. Pack
588450SD	588450SD-1	2-3/8"	#6 FH	.17	10 ea

Sea-Dog® Bottle Opener installs with two #6 FH fasteners (not included). Constructed of corrosion resistant cast 316 stainless steel.

**ACCU-MIX™ OIL TO GAS MEASURING BOTTLE**

Plastic

Bulk	Display	Size	A	B	Wt.(lb.)	Std. Pack
588614	n/a	32 oz.	9"	3-1/8"	.12	100 ea

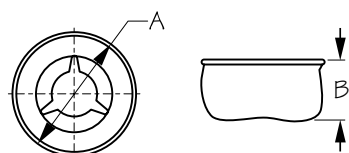
Accu-Mix™ Oil to Gas Measuring Bottle accurately measures the correct oil to gas mixture for all 2-cycle engines. Mixtures of 24:1, 33:1, 40:1, 50:1 and 100:1 ratios are shown on the see-thru bottle for accurate measuring in both liters and gallons.

**WATERPROOF PLAYING CARDS**

Plastic

Bulk	Display	Description	Wt.(lb.)	Std. Pack
n/a	588811-1	Waterproof Playing Cards	.34	10 ea

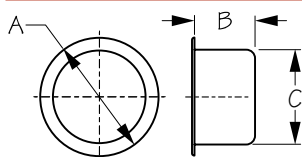
Sea-Dog® Waterproof Playing Cards are 100% plastic, totally waterproof, very durable, and designed especially for marine use. Features artwork of ship's figureheads with each suit, highlighting a different character theme.

**BEAN BAG STYLE ASHTRAY**

Stamped 304 Stainless Steel

Bulk	Display	A	B	Color	Wt.(lb.)	Std. Pack
589610	589610-1	4-1/8"	2-1/4"	Red	.70	5 ea

Bean Bag Style Ashtray is ideal for any boat, auto, or RV. Features a corrosion resistant stamped 304 stainless steel wind proof cover with a stable, non-sliding bean bag base. 4-1/8" in diameter.

**FLUSH MOUNT ASHTRAY**

Stamped 304 Stainless Steel

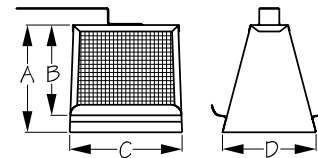
Bulk	Display	A	B	C	Wt.(lb.)	Std. Pack
589630	n/a	3-3/8"	1-5/8"	2-3/4"	.17	5 ea

The Flush Mount Ashtray fits inside Flush Mount Drink Holders (588000-588012). Constructed of corrosion resistant stamped 304 stainless steel.



**TOASTER**

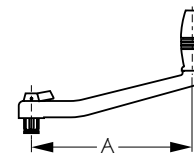
Stamped 304 Stainless Steel



Bulk	Display	A	B	C	D	Wt.(lb.)	Std. Pack
n/a	590400-1	5-1/8"	4-5/16"	5-3/8"	4-7/16"	.49	6 ea

**"IT FLOATS™" - LOCKING WINCH HANDLE**

Injection Molded Fiberglass Nylon

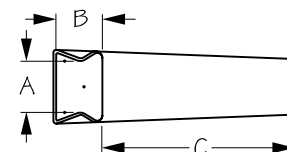


Bulk	Display	A	Wt.(lb.)	Std. Pack
604080	n/a	8"	.57	6 ea
604100	n/a	10"	.61	6 ea

"It Floats™" Locking Winch Handle features a patented design. Made by air assist injection molding instead of the traditional foam filled method, preventing any potential leakage of foam from within the handle. Ball bearings in the handle ensure smoother action under load. Fits in the dip molded PVC Winch Handle Holder (724200) sold separately.

**WINCH HANDLE HOLDER**

Dip Molded PVC



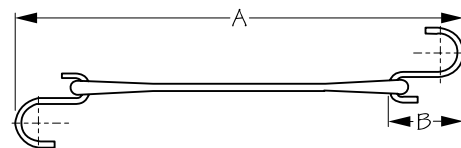
Bulk	Display	A	B	C	Wt.(lb.)	Std. Pack
724200	n/a	2-1/2"	1-7/8"	9-1/2"	.78	1 ea

Winch Handle Holder fits standard and locking winch handles. See Sea-Dog® Winch Handles (604080-604100). Constructed of flexible dip molded PVC.

⚠ **WARNING:** Cancer and Reproductive Harm - www.P65Warnings.ca.gov

**RUBBER TIE DOWN**

Molded Natural Rubber/Zinc Plated Hooks



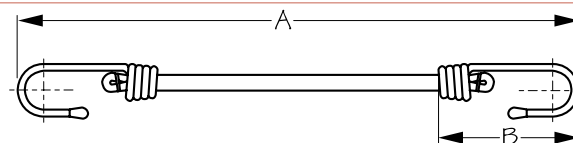
Bulk	Display	A	B	Wt.(lb.)	Std. Pack
635010	n/a	13-1/2"	2-1/4"	.11	10 ea
635015	n/a	18-1/2"	2-1/4"	.18	10 ea
635021	n/a	25"	2-1/4"	.23	10 ea
635031	n/a	35"	2-1/4"	.29	10 ea

These Rubber Tie Downs are great for securing tarps, as well as cargo on trailers, trucks, campers, etc. Excellent for cooler climates; natural rubber straps will not become brittle, snap or tear in freezing temperatures. Constructed of rugged, long-life, natural black rubber with two zinc plated steel hooks.

⚠ **WARNING:** Cancer and Reproductive Harm - www.P65Warnings.ca.gov

**ELASTIC SHOCK CORD**

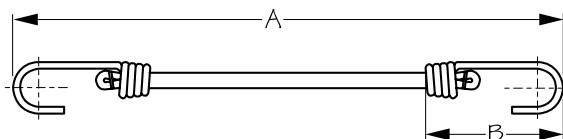
Natural Rubber with Polyethylene Cover



Bulk	Display	A	B	Diameter	Wt.(lb.)	Std. Pack
n/a	650120-1	12"	3"	5/16"	.16	10 ea
n/a	650180-1	18"	3"	11/32"	.13	10 ea
n/a	650240-1	24"	3"	3/8"	.19	10 ea
n/a	650300-1	30"	3"	3/8"	.26	10 ea
n/a	650360-1	36"	3"	3/8"	.27	10 ea
n/a	650400-1	40"	3"	3/8"	.30	10 ea

These Elastic Shock Cords are great for securing bicycles, hand trucks, dinghies, or other odd-shaped items to your boat, trailer, or RV. Also handy for bundling items together, making them easier to carry or store. Constructed of natural rubber with a UV resistant polyethylene cover. Hooks are coated for corrosion and scratch resistance. Available sizes: 12"-40".

⚠ **WARNING:** Cancer and Reproductive Harm - www.P65Warnings.ca.gov

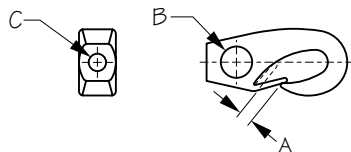
**ELASTIC SHOCK CORD**

Formed Stainless Steel Hook/Natural Rubber w/ Nylon Cover



Bulk	Display	A	B	Diameter	Wt.(lb.)	Std. Pack
n/a	651180-1	18"	2-1/2"	3/8"	.17	10 ea
n/a	651240-1	24"	2-1/2"	3/8"	.19	10 ea
n/a	651300-1	30"	2-1/2"	3/8"	.22	10 ea
n/a	651360-1	36"	2-1/2"	3/8"	.24	10 ea
n/a	651400-1	40"	2-1/2"	3/8"	.26	10 ea

These Elastic Shock Cords are great for securing bicycles, hand trucks, dinghies, or other odd-shaped items to your boat, trailer, or RV. Also handy for bundling items together, making them easier to carry or store. Constructed of natural rubber with a UV resistant polyethylene cover. Formed stainless hooks for corrosion resistance. Available sizes: 18"-40".

**SHOCK CORD CLIP**

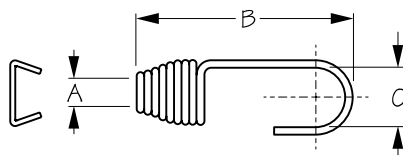
Injection Molded Nylon



Bulk	Display	A	B	C	Color	Wt.(lb.)	Std. Pack
652060	652060-1	1/4"	7/16"	1/4"	White	.01 / .02	10 ea / 10 pr
652080	652080-1	5/16"	9/16"	5/16"	White	.01 / .02	10 ea / 10 pr
652100	n/a	3/8"	3/4"	7/16"	White	.03	10 ea
652061	n/a	1/4"	7/16"	1/4"	Black	.01	10 ea
652081	n/a	5/16"	9/16"	5/16"	Black	.01	10 ea
652101	n/a	3/8"	3/4"	7/16"	Black	.03	10 ea

Shock Cord Clips can be used with bulk shock cord to create custom tie-down lengths. Constructed of UV stabilized injection molded nylon.

⚠ **WARNING:** Cancer and Reproductive Harm - www.P65Warnings.ca.gov

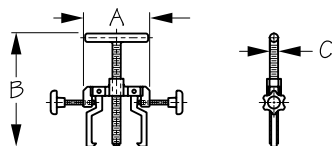
**SHOCK CORD HOOKS AND CRIMPS**

Formed 304 Stainless Steel



Bulk	Display	No. of Hooks	No. of Crimps	A	B	C	Wt.(lb.)	Std. Pack
657060	n/a	Hooks Only	n/a	1/4"	2"	5/8"	.01	10 ea
657065	657065-1	n/a	Crimps Only	1/4"			.02 / .04	100 ea / 10 sets
n/a	657066-1	2	2	1/4"	2"	5/8"	.04	10 sets
657080	n/a	Hooks Only	n/a	5/16"	2-7/8"	7/8"	.04	10 ea
657085	657085-1	n/a	Crimps Only	5/16"			.01 / .02	100 ea / 10 sets
n/a	657086-1	2	2	5/16"	2-7/8"	7/8"	.08	10 sets
657100	n/a	Hooks Only	n/a	3/8"	2-5/8"	15/16"	.06	10 ea
657105	657105-1	n/a	Crimps Only	3/8"			.01 / .02	100 ea / 10 sets
n/a	657106-1	2	2	3/8"	2-5/8"	15/16"	.03	10 sets

Shock Cord Hooks & Crimps can be used with bulk shock cord to create custom tie-down lengths. Constructed of corrosion resistant formed 304 stainless steel. 657065-1, 657085-1, and 657105-1 contain crimps only and are packed 10 per set. 657066-1, 657086-1, and 657106-1 contain 2 hooks & 2 crimps per set.

**IMPELLER PULLER**

Investment Cast 316 Stainless Steel



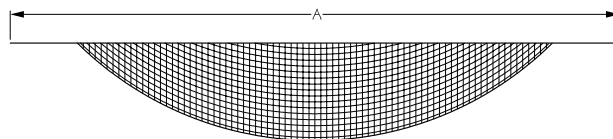
Bulk	Display	A	B	C	Wt.(lb.)	Std. Pack
660020	660020-1	3-3/4"	6-3/8"	7/16"	1.04	1 ea
660040	660040-1	3-3/4"	5-3/16"	7/16"	.90	1 ea

Impeller Pullers allow easier removal of flexible impellers from pumps. Tighten the side grips onto the impeller hub and turn the center screw shaft to pull the impeller out of the pump. Constructed of corrosion resistant investment cast 316 stainless steel. 660020 for impellers 3-1/16" to 5" in diameter. 660040 for impellers 2-1/4" to 2-9/16" in diameter. Comparable to Jabsco #50070-0040 and #50070-0200. USE ANTI-SEIZE ON ALL THREADS TO PREVENT GALLING.



GEAR HAMMOCK

Nylon



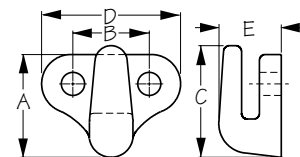
Bulk	Display	Description	A	Wt.(lb.)	Std. Pack
n/a	671100-1	Gear Hammock	60"	.21	10 ea

This Gear Hammock is great for ventilated, suspended storage. Perfect for bunk areas! 60" Length. Constructed of mildew and rot resistant nylon. Use with Hammock Hooks 671460 or 671461 (not included).



DOUBLE HOLE LASHING HOOK

Injection Molded Nylon



Bulk	Display	A	B	C	D	E	Color	Fastener	Wt.(lb.)	Std. Pack
671415	671415-1	7/8"	5/8"	15/16"	1-3/16"	9/16"	Black	#10 RH	.01 / .02	100 ea / 10 sets
671416	671416-1	7/8"	5/8"	15/16"	1-3/16"	9/16"	White	#10 RH	.01 / .02	100 ea / 10 sets

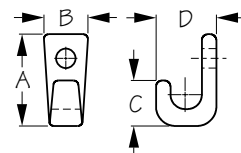
Lashing hooks create instant securing points for storing gear. Use in conjunction with shock cord to create custom storage solutions. One set includes five hooks. Installs with two #10 RH fasteners (not included). Constructed of UV resistant injection molded nylon. Available in black or white.

⚠ WARNING: Cancer and Reproductive Harm - www.P65Warnings.ca.gov



LASHING HOOKS

Injection Molded Nylon



Bulk	Display	A	B	C	D	Color	Fastener	Wt.(lb.)	Std. Pack
671425	671425-1	15/16"	7/16"	7/16"	5/8"	Black	#6 RH	.01 / .02	100 ea / 10 sets
671426	671426-1	15/16"	7/16"	7/16"	5/8"	White	#6 RH	.01 / .02	100 ea / 10 sets

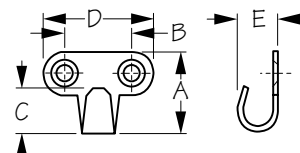
Lashing hooks create instant securing points for storing gear. Use in conjunction with shock cord to create custom storage solutions. One set includes five hooks. Installs with one #6 RH fastener (not included). Constructed of UV resistant injection molded nylon. Available in black or white.

⚠ WARNING: Cancer and Reproductive Harm - www.P65Warnings.ca.gov



HAMMOCK HOOK

Stamped 304 Stainless Steel



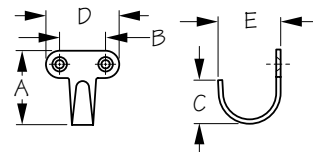
Bulk	Display	A	B	C	D	E	Fastener	Wt.(lb.)	Std. Pack
671460	671460-1	15/16"	3/4"	1/2"	1-1/4"	1/2"	#6 FH	.02 / .04	20 ea / 10 pr
671461	671461-1	3/4"	3/4"	7/16"	1-1/4"	5/8"	#6 FH	.02 / .04	20 ea / 10 pr

Hammock Hooks are designed with an extra bend for additional holding power. Ideal for fender and lashing hook applications. Constructed of corrosion resistant stamped 304 stainless steel. Installs with two #6 FH fasteners (not included). Comparable to Wilcox® #257.



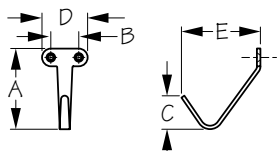
COAT HOOK - SMALL

Stamped 304 Stainless Steel



Bulk	Display	A	B	C	D	E	Fastener	Wt.(lb.)	Std. Pack
671465	671465-1	1-1/4"	13/16"	3/4"	1-1/4"	1-1/16"	#6 FH	.02 / .04	10 ea / 10 pr

Create a securing point for storing gear instantly. The Small Coat Hook installs with two #6 FH fasteners (not included). Constructed of corrosion resistant stamped 304 stainless steel.

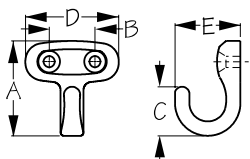
**COAT HOOK - LARGE**

Stamped 304 Stainless Steel



Bulk	Display	A	B	C	D	E	Fastener	Wt.(lb.)	Std. Pack
671485	671485-1	2-7/16"	7/8"	1"	1-7/16"	2-7/16"	#6 FH	.10 / .20	10 ea / 10 pr

Create a securing point for storing gear instantly. The Large Coat Hook installs with two #6 FH fasteners (not included). Constructed of corrosion resistant stamped 304 stainless steel.

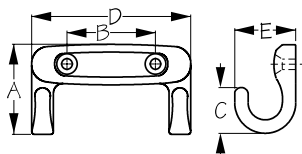
**COAT HOOK - SINGLE**

Investment Cast 316 Stainless Steel



Bulk	Display	A	B	C	D	E	Fastener	Wt.(lb.)	Std. Pack
671491	671491-1	1-7/16"	3/4"	3/4"	1-7/16"	1"	#8 FH	.06 / .12	5 ea

Single Coat Hook installs with two #8 FH fasteners (not included). Constructed of corrosion resistant investment cast 316 stainless steel.

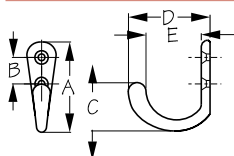
**COAT HOOK - DOUBLE**

Investment Cast 316 Stainless Steel



Bulk	Display	A	B	C	D	E	Fastener	Wt.(lb.)	Std. Pack
671492	671492-1	1-7/16"	1-7/16"	3/4"	2-9/16"	1"	#8 FH	.13 / .26	5 ea

Double Coat Hook creates a securing point for storing gear instantly. Constructed of corrosion resistant investment cast 316 stainless steel. Installs with two #8 FH fasteners (not included).

**SINGLE COAT HOOK - SMALL**

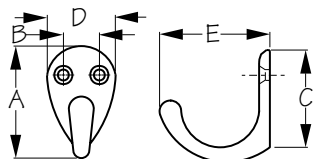
Cast Brass



Bulk	Display	A	B	C	D	E	Finish	Fastener	Wt.(lb.)	Std. Pack
671500	671500-1	2-1/16"	5/8"	1-1/8"	1-7/8"	1-1/4"	Chrome	#6 FH	.08 / .16	10 ea / 10 pr
671505	671505-1	2-1/16"	5/8"	1-1/8"	1-7/8"	1-1/4"	Brass	#6 FH	.08 / .16	10 ea / 10 pr

Small Single Coat Hooks create a securing point for storing gear instantly. Constructed of sand cast brass. Installs with two #6 FH fasteners (not included). Available in polished brass or chrome finish.

⚠ WARNING: Cancer and Reproductive Harm - www.P65Warnings.ca.gov

**SINGLE COAT HOOK - LARGE**

Cast Brass



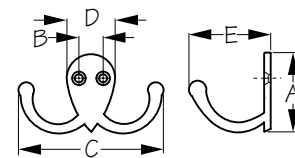
Bulk	Display	A	B	C	D	E	Finish	Fastener	Wt.(lb.)	Std. Pack
671501	671501-1	1-9/16"	1/2"	1-3/8"	1"	1-3/4"	Chrome	#6 FH	.06 / .12	10 ea / 10 pr
671506	671506-1	1-9/16"	1/2"	1-3/8"	1"	1-3/4"	Brass	#6 FH	.06 / .12	10 ea / 10 pr

Small Single Coat Hooks create a securing point for storing gear instantly. Constructed of sand cast brass. Installs with two #6 FH fasteners (not included). Available in polished brass or chrome finish.

⚠ WARNING: Cancer and Reproductive Harm - www.P65Warnings.ca.gov

**DOUBLE COAT HOOK**

Cast Brass



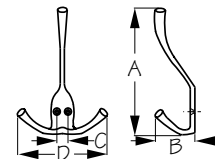
Bulk	Display	A	B	C	D	E	Finish	Fastener	Wt.(lb.)	Std. Pack
671510	671510-1	1-1/2"	1/2"	2-11/16"	7/8"	1-9/16"	Chrome	#6 FH	.08 / .16	10 ea / 10 pr
671515	671515-1	1-1/2"	1/2"	2-11/16"	7/8"	1-9/16"	Brass	#6 FH	.08 / .16	10 ea / 10 pr

Double Coat Hooks create a securing point for storing gear instantly. Constructed of sand cast brass. Installs with two #6 FH fasteners (not included). Available in polished brass or chrome finish.

⚠ **WARNING:** Cancer and Reproductive Harm - www.P65Warnings.ca.gov

**TRIPLE COAT HOOK**

Cast Brass



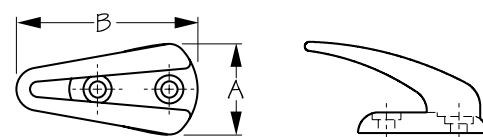
Bulk	Display	A	B	C	D	Finish	Fastener	Wt.(lb.)	Std. Pack
671520	671520-1	4-5/8"	1-7/16"	7/16"	2-13/16"	Chrome	#6 FH	.20	10 ea
671525	671525-1	4-5/8"	1-7/16"	7/16"	2-13/16"	Brass	#6 FH	.20	10 ea

Triple Coat Hooks create a securing point for storing gear instantly. Constructed of sand cast brass. Installs with two #6 FH fasteners (not included). Available in polished brass or chrome finish.

⚠ **WARNING:** Cancer and Reproductive Harm - www.P65Warnings.ca.gov

**COAT HOOK**

Injection Molded Nylon

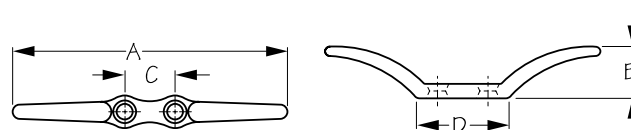


Bulk	Display	A	B	Color	Fastener	Wt.(lb.)	Std. Pack
672709	n/a	1"	2"	Black	#8 RH	.02	10 ea

This Coat Hook creates a securing point for storing gear instantly. Constructed of injection molded nylon. Installs with two #8 RH fasteners (not included).

**TIE DOWN CLEAT**

Zinc Chrome Plated



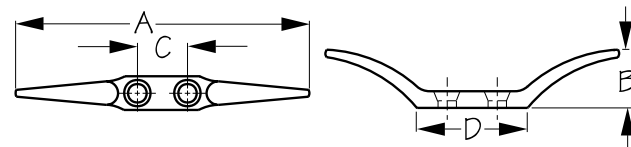
Bulk	Display	A	B	C	D	Fastener	Wt.(lb.)	Std. Pack
672100	672100-1	4-7/16"	7/8"	13/16"	1-9/16"	#10 FH	.07 / .14	10 ea / 10 pr

This Tie Down Cleat is designed for securing small diameter line. Great for flag halyards, awnings, radar reflectors, etc. Constructed of chrome plated zinc. Installs with two #10 FH fasteners (not included).

⚠ **WARNING:** Cancer and Reproductive Harm - www.P65Warnings.ca.gov

**LINE CLEAT**

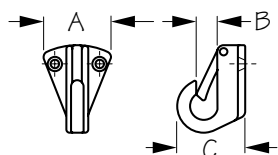
Cast Brass



Bulk	Display	A	B	C	D	Fastener	Wt.(lb.)	Std. Pack
672110	672110-1	2-1/2"	1/2"	1/2"	1"	#6 FH	.03 / .06	10 ea / 10 pr
672115	672115-1	4-1/16"	3/4"	11/16"	1-1/2"	#8 FH	.06 / .12	10 ea / 10 pr

These Line Cleats are designed for securing small diameter line. Great for flag halyards, awnings, radar reflectors, etc. Constructed of cast brass. Installs with two FH fasteners (not included).

⚠ **WARNING:** Cancer and Reproductive Harm - www.P65Warnings.ca.gov

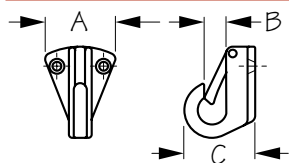
**FENDER HOOK**

Investment Cast 316 Stainless Steel



Bulk	Display	A	B	C	Fastener	Wt.(lb.)	Std. Pack
672410	n/a	1-5/16"	5/16"	1"	#8 FH	.07	10 ea

Fender Hooks can be used for quick and easy placement of fenders anywhere on your boat. For use with 5/16" line. Constructed of corrosion resistant investment cast 316 stainless steel. Installs with two #8 FH fasteners (not included).

**FENDER HOOK**

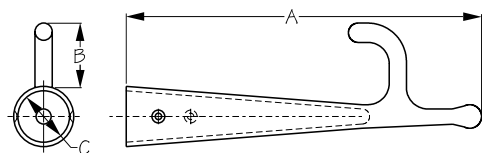
Chrome Plated Sand Cast Brass



Bulk	Display	A	B	C	Fastener	Wt.(lb.)	Std. Pack
672510	672510-1	1-5/16"	5/16"	1"	#8 FH	.10	10 ea
672520	672520-1	1-5/16"	7/16"	1-5/16"	#8 FH	.13	10 ea

Fender Hooks can be used for quick and easy placement of fenders anywhere on your boat. For use with 5/16" or 7/16" line. Constructed of chrome plated sand cast brass. Installs with two #8 FH fasteners (not included).

⚠ WARNING: Cancer and Reproductive Harm - www.P65Warnings.ca.gov

**BOAT HOOK**

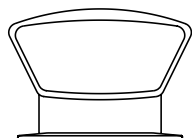
Polished Cast Bronze



Bulk	Display	A	B	C	Fastener	Wt.(lb.)	Std. Pack
672800	672800-1	8-1/4"	1-1/2"	1-3/16"	#6 FH	1.00	1 ea

The traditional style Boat Hook tip is for use building a custom boat hook. Constructed of polished cast bronze. Installs with two #6 FH fasteners (not included).

⚠ WARNING: Cancer and Reproductive Harm - www.P65Warnings.ca.gov

**LOW PROFILE COWL VENT/SNAP-ON DECK PLATE**

Dip Molded PVC



Bulk	Display	Diameter	Height	Required Hole Size	Int. Color	Wt.(lb.)	Std. Pack
n/a	727130-3	3"	5"	3-3/4"	Red	.96	1 ea
727131	n/a	Replacement Cowl Only			Red	.83	1 ea
n/a	727132-3	3"	5"	3-3/4"	White	.96	1 ea
727133	n/a	Replacement Cowl Only			White	.83	1 ea
727139	n/a	Deck Plate Only		3-3/4"		.19	1 ea
n/a	727140-3	4"	5-7/8"	4-3/4"	Red	1.43	1 ea
727141	n/a	Replacement Cowl Only			Red	1.25	1 ea
n/a	727142-3	4"	5-7/8"	4-3/4"	White	1.43	1 ea
727143	n/a	Replacement Cowl Only			White	1.25	1 ea
727149	n/a	Deck Plate Only		4-3/4"		.28	1 ea

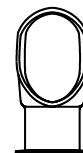
Low Profile Cowl Vents are designed for air intake or cabin ventilation when used in conjunction with a dorade box. Great for bilge ventilation with or without a blower. Ideal for applications where a taller vent would foul lines or restrict crew movement. Includes snap-on deck plate and cover for use in rough weather. Constructed of UV resistant dip molded PVC. Available with a white or traditional red interior. Avoid contact with acetone or strong solvents.

⚠ WARNING: Cancer and Reproductive Harm - www.P65Warnings.ca.gov



STANDARD COWL VENT/SNAP-ON DECK PLATE

Dip Molded PVC



Bulk	Display	Diameter	Height	Required Hole Size	Int. Color	Wt.(lb.)	Std. Pack
n/a	727135-3	3"	7-3/4"	3-3/4"	Red	1.34	1 ea
727136	n/a	Replacement Cowl Only			Red	1.07	1 ea
n/a	727137-3	3"	7-3/4"	3-3/4"	White	1.34	1 ea
727138	n/a	Replacement Cowl Only			White	1.07	1 ea
n/a	727145-3	4"	9-1/4"	4-3/4"	Red	1.91	1 ea
727146	n/a	Replacement Cowl Only			Red	1.75	1 ea
n/a	727147-3	4"	9-1/4"	4-3/4"	White	1.91	1 ea
727148	n/a	Replacement Cowl Only			White	1.75	1 ea
727139	n/a	Deck Plate Only 3"				.19	1 ea
727149	n/a	Deck Plate Only 4"				.28	1 ea

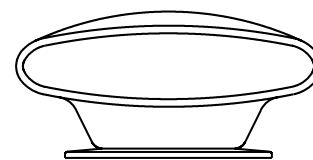
Standard Cowl Vents are designed for air intake or cabin ventilation when used in conjunction with a dorade box. Great for bilge ventilation with or without a blower. Promotes passive air flow preventing mold and mildew keeping the boat interior smelling fresh. Includes snap-on deck plate and cover for use in rough weather. Constructed of UV resistant dip molded PVC. Available with a white or traditional red interior. Avoid contact with acetone or strong solvents.

⚠ WARNING: Cancer and Reproductive Harm - www.P65Warnings.ca.gov



LOW PROFILE COWL VENT/ECONOMY SNAP-ON DECK PLATE

Dip Molded PVC



Bulk	Display	Diameter	Height	Required Hole Size	Wt.(lb.)	Std. Pack
n/a	727300-3	2-3/4"	3-1/2"	3-1/4"	.89	1 ea

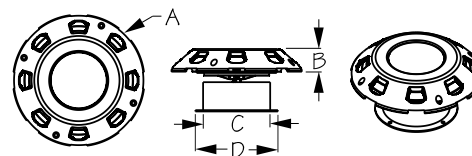
Low Profile Cowl Vent with Economy Snap-On Deck Plate is designed for air intake or cabin ventilation when used with a dorade box. Great for bilge ventilation with or without a blower. Ideal for applications where a taller vent would foul lines or restrict crew movement. Includes economy snap-on deck plate and cover for use in rough weather. Constructed of UV resistant dip molded PVC. Available with a traditional red interior. Avoid contact with acetone or strong solvents.

⚠ WARNING: Cancer and Reproductive Harm - www.P65Warnings.ca.gov



MUSHROOM VENT

Formed 304 Stainless Steel/Injected Molded Nylon



Bulk	Display	A	B	C	D	Finish	Wt.(lb.)	Std. Pack
n/a	727520-3	8"	1-3/4"	4"	5"	Stainless	.83	1 ea
n/a	727525-3	8"	1-3/4"	4"	5"	Dark Gray	.63	1 ea

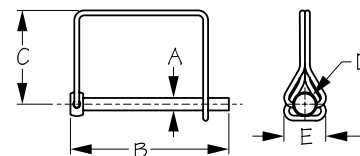
These Mushroom Vents provide passive ventilation for your cabin by reducing stagnant air, mold, and mildew without opening a hatch. Fully adjustable with a manual knob. Translucent center provides additional light down below. O-ring and gasket prevent water ingress. Trim piece provided for thru deck installations. 4" hole required. Constructed of injection molded nylon with a nylon or formed 304 stainless steel cover.

⚠ WARNING: Cancer and Reproductive Harm - www.P65Warnings.ca.gov



COUPLER PIN

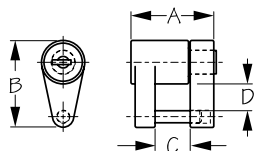
Electro-Galvanized Steel



Bulk	Display	A	B	C	D	E	Wt.(lb.)	Std. Pack
751010	751010-1	1/4"	3"	1-13/16"	7/16"	13/16"	.07	10 ea
751011	751011-1	5/16"	3"	2"	5/8"	7/8"	.07	10 ea

Square Coupler Pins add an additional level of security, preventing accidental uncoupling while in transit to better protect your trailer. The snap lock bale is spring tensioned for stronger holding power. Fits most coupler sizes. Constructed of electro-galvanized steel for corrosion resistance.

⚠ WARNING: Cancer and Reproductive Harm - www.P65Warnings.ca.gov

**COUPLER LOCK - TWO PIECE**

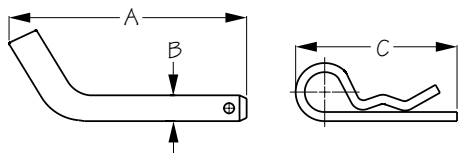
Brass Plated Zinc



Bulk	Display	A	B	C	D	Wt.(lb.)	Std. Pack
751030	751030-1	1-11/16"	1-13/16"	3/4"	9/16"	.34	10 ea

The Two Piece Coupler Lock is designed for theft deterrence, while adding an additional level of security preventing accidental uncoupling while in transit. The two-piece design affords better access in hard to reach places. Fits most coupler sizes. Includes two keys. Constructed of corrosion resistant brass plated zinc.

⚠ WARNING: Cancer and Reproductive Harm - www.P65Warnings.ca.gov

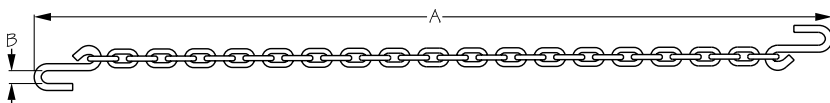
**RECEIVER PIN WITH CLIP**

Zinc Plated Steel



Bulk	Display	A	B	C	Wt.(lb.)	Std. Pack
751062	751062-1	4-3/4"	5/8"	3-1/8"	.50	10 ea
OP75106	n/a	Replacement Clip			.02	10 ea

The Receiver Pin with Clip ensures your ball mount or other hitch mounted accessories stay securely engaged to your trailer hitch. Hitch pin clip included. Corrosion resistant zinc plated steel construction.

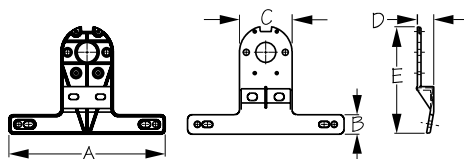
**TRAILER CHAIN**

Zinc Plated Steel



Bulk	Display	A	B	Chain Link Size	Class	Wt.(lb.)	Std. Pack
n/a	752010-1	44-1/2"	13/16"	1/4"	2 (3,500 lb.)	2.66	1 ea

Use this Trailer Chain between your trailer and vehicle as an added layer of security to prevent separation if trailer inadvertently comes off trailer ball. Secures with S-hooks on both ends. Constructed of zinc plated steel.

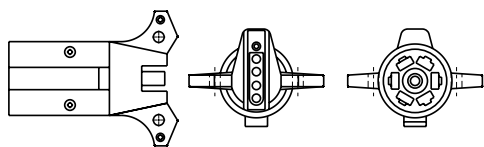
**TRAILER LICENSE PLATE BRACKET**

Injection Molded Nylon



Bulk	Display	A	B	C	D	E	Wt.(lb.)	Std. Pack
753250	n/a	8"	1"	2-11/16"	13/16"	5-9/16"	.25	1 ea

The Trailer License Plate Bracket can be used to add a new or replace a broken license plate bracket. Fits most standard tail lights. Required installation fasteners are application dependent and not included. Constructed of UV resistant injection molded nylon.

**7 TO 5 TRAILER PLUG ADAPTER**

Injection Molded PVC



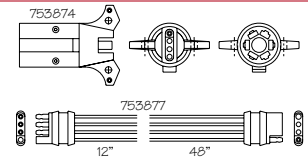
Bulk	Display	Description	Wt.(lb.)	Std. Pack
n/a	753864-1	Trailer Plug Adapter 7 to 5	.22	10 ea

⚠ WARNING: Cancer and Reproductive Harm - www.P65Warnings.ca.gov



4-WIRE TRAILER ACCESSORIES

Injection Molded PVC



Bulk	Display	Description	Wt.(lb.)	Std. Pack
n/a	753874-1	Trailer Plug Adapter 7 to 4	.16	10 ea
n/a	753877-1	Trailer Plug Kit (Male & Female) 12" & 48"	.12	10 ea

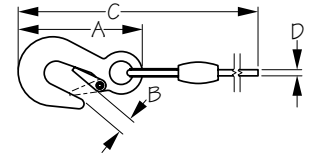
Trailer plug kit wire is 16 gauge.

⚠ **WARNING:** Cancer and Reproductive Harm - www.P65Warnings.ca.gov



TRAILER WINCH CABLE

Galvanized Cable/Electro-Galvanized Forged Steel



Bulk	Display	A	B	C	D	Wt.(lb.)	Std. Pack
755220	755220-1	3-7/8"	11/16"	20'	3/16"	2.06	10 ea

The Trailer Winch Cable features 20' of 3/16" galvanized cable and includes a Utility Snap (155822). Rated at 5,000 lbs. breaking strength. Constructed of galvanized cable with electro-galvanized forged steel hook.

⚠ **WARNING:** Cancer and Reproductive Harm - www.P65Warnings.ca.gov

SEADOG[®]LINE
QUALITY MARINE GEAR

**GOT SEA-DOG
IN YOUR TOOLBOX?**

