

8

Navigation
Lights

Dome Lights

Berth Lights

Utility Lights

Courtesy Lights

LED Lights

Halogen Lights

Spot & Flood
Lights

Spreader Lights

Battery
Accessories

Switches &
Dimmers

Windshield
Wipers

Windshield
Wiper Motors

Horn Buttons

Ignition Switches

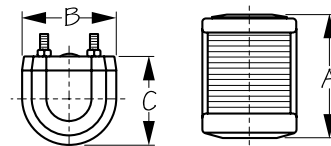
Kill Switches

2013

Lights & Switches

**MASTHEAD LIGHT**

Injection Molded Polycarbonate/Stamped Stainless Steel



Bulk	Display	A	B	C	Wt.(lb.)	Std. Pack
400001	400001-1	2-7/8"	2-3/16"	2-1/8"	.25	5 ea
441035	441035-1	Replacement Bulb (Festoon Style)			.01 / .02	10 ea / 10 pr

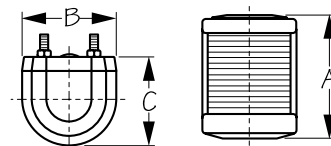
This Masthead Light is for replacement of existing lighting (not for new construction). Constructed of injection molded polycarbonate with stamped stainless steel.

These navigation lights do not meet the USCG 33 CFR 183.810/ABYC standard A-16 from 2016, but can be used as replacement lights on vessels manufactured before 11/1/2003.

⚠ **WARNING:** Cancer and Reproductive Harm - www.P65Warnings.ca.gov

**STERN LIGHT**

Injection Molded Polycarbonate/Stamped Stainless Steel



Bulk	Display	A	B	C	Wt.(lb.)	Std. Pack
400002	400002-1	2-7/8"	2-3/16"	2-1/8"	.25	5 ea
441035	441035-1	Replacement Bulb (Festoon Style)			.01 / .02	10 ea / 10 pr

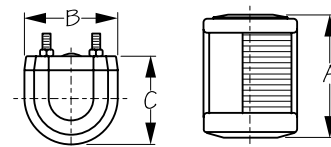
This Stern Light is for replacement of existing lighting (not for new construction). Constructed of injection molded polycarbonate with stamped stainless steel.

These navigation lights do not meet the USCG 33 CFR 183.810/ABYC standard A-16 from 2016, but can be used as replacement lights on vessels manufactured before 11/1/2003.

⚠ **WARNING:** Cancer and Reproductive Harm - www.P65Warnings.ca.gov

**SIDE MOUNT LIGHTS**

Injection Molded Polycarbonate/Stamped Stainless Steel



Bulk	Display	A	B	C	Position	Wt.(lb.)	Std. Pack
400003	400003-1	2-7/8"	2-3/16"	2-1/8"	Port	.27	5 ea
400004	400004-1	2-7/8"	2-3/16"	2-1/8"	Starboard	.27	5 ea
441035	441035-1	Replacement Bulb (Festoon Style)				.01 / .02	10 ea / 10 pr

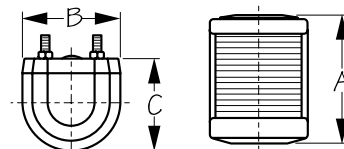
These Side Mount Lights are for replacement of existing lighting (not for new construction). Constructed of injection molded polycarbonate with stamped stainless steel.

These navigation lights do not meet the USCG 33 CFR 183.810/ABYC standard A-16 from 2016, but can be used as replacement lights on vessels manufactured before 11/1/2003.

⚠ **WARNING:** Cancer and Reproductive Harm - www.P65Warnings.ca.gov

**COMBINATION BOW LIGHT**

Injection Molded Polycarbonate/Stamped Stainless Steel

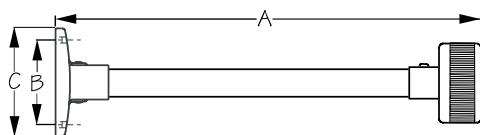


Bulk	Display	A	B	C	Wt.(lb.)	Std. Pack
400005	400005-1	2-7/8"	2-3/16"	2-1/8"	.25	5 ea
441035	441035-1	Replacement Bulb (Festoon Style)			.01 / .02	10 ea / 10 pr

This Combination Bow Light is for replacement of existing lighting (not for new construction). Constructed of injection molded polycarbonate with stamped stainless steel.

These navigation lights do not meet the USCG 33 CFR 183.810/ABYC standard A-16 from 2016, but can be used as replacement lights on vessels manufactured before 11/1/2003.

⚠ **WARNING:** Cancer and Reproductive Harm - www.P65Warnings.ca.gov

**LED FIXED MOUNT ALL AROUND LIGHT**

Injection Molded Nylon/Aluminum

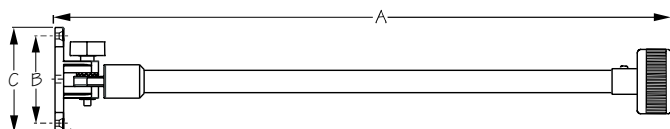


Bulk	Display	A	B	C	NMMA Type Accepted #	Fastener	Wt.(lb.)	Std. Pack
n/a	400010-1	4"	2-3/8"	2-15/16"	2513178	#8 FH	.16	1 ea
n/a	400011-1	7-1/2"	2-3/8"	2-15/16"	2513979	#8 FH	.20	1 ea

LED Fixed Mount All Around Lights are approved for USCG 2NM (Colreg 2 mile). Constructed of injection molded nylon and aluminum. Installs with two #8 FH fasteners (not included). 12VDC.

All USCG approved navigation lights must be mounted properly to provide the correct visual alignment and allow unimpeded sight lines. Please refer to USCG regulations for 1 NM and 2 NM navigation lights for more information.

⚠ WARNING: Cancer and Reproductive Harm - www.P65Warnings.ca.gov

**LED FOLD DOWN ALL AROUND LIGHT**

Injection Molded Nylon/Aluminum

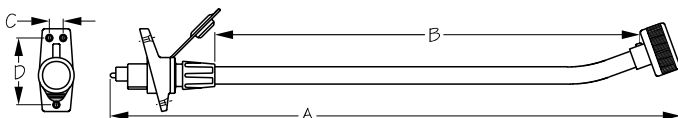


Bulk	Display	A	B	C	NMMA Type Accepted #	Fastener	Wt.(lb.)	Std. Pack
400012	400012-1	9"	1-7/8"	2-1/2"	2513980	#8 FH	.29	1 ea
n/a	400013-1	24"	1-7/8"	2-1/2"	2513981	#8 FH	.42	1 ea

LED Fold Down 360° All Around Lights are approved for USCG 2NM (Colreg 2 mile). Constructed of injection molded nylon with aluminum tubing. Installs with two #8 FH fasteners (not included). 12VDC. Low amp draw.

All USCG approved navigation lights must be mounted properly to provide the correct visual alignment and allow unimpeded sight lines. Please refer to USCG regulations for 1 NM and 2 NM navigation lights for more information.

⚠ WARNING: Cancer and Reproductive Harm - www.P65Warnings.ca.gov

**LED REMOVABLE ALL AROUND LIGHT**

Injection Molded Nylon/Aluminum

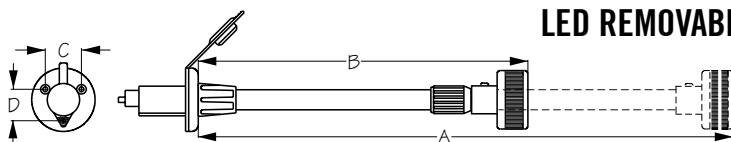


Bulk	Display	A	B	C	D	NMMA Type Accepted #	Fastener	Wt.(lb.)	Std. Pack
n/a	400015-1	24-5/8"	18-1/2"	5/8"	2-7/8"	2513982	#8 FH	.40	1 ea

LED Removable 360° All Around Lights are approved for USCG 2NM (Colreg 2 mile). Constructed of injection molded nylon and aluminum. Installs with three #8 FH fasteners (not included). 12VDC. Low amp draw.

All USCG approved navigation lights must be mounted properly to provide the correct visual alignment and allow unimpeded sight lines. Please refer to USCG regulations for 1 NM and 2 NM navigation lights for more information.

⚠ WARNING: Cancer and Reproductive Harm - www.P65Warnings.ca.gov

**LED REMOVABLE TELESCOPIC ALL AROUND LIGHT**

Injection Molded Nylon/Aluminum



Bulk	Display	A	B	C	D	NMMA Type Accepted #	Fastener	Wt.(lb.)	Std. Pack
n/a	400016-1	48"	26"	1-5/16"	1-3/16"	2513983	#8 FH	.60	1 ea
n/a	400017-1	60"	34"	1-5/16"	1-3/16"	2513984	#8 FH	1.02	1 ea

LED Removable Telescopic 360° All Around Lights are approved for USCG 2NM (Colreg 2 mile). Constructed of injection molded nylon and aluminum. Installs with three #8 FH fasteners (not included). 12VDC. Low amp draw.

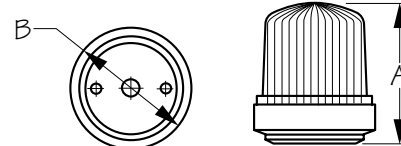
All USCG approved navigation lights must be mounted properly to provide the correct visual alignment and allow unimpeded sight lines. Please refer to USCG regulations for 1 NM and 2 NM navigation lights for more information.

⚠ WARNING: Cancer and Reproductive Harm - www.P65Warnings.ca.gov



ALL AROUND LIGHT

Injection Molded Polycarbonate/Stamped Stainless Steel



Bulk	Display	A	B	Fastener	Wt.(lb.)	Std. Pack
400020	400020-1	2-3/4"	2-1/4"	#6 RH	.19	5 ea

This 360° All Around Light is for replacement of existing lighting (not for new construction). Constructed of impact resistant injection molded polycarbonate and corrosion resistant stamped 304 stainless steel. Installs with two #6 RH fasteners (not included).

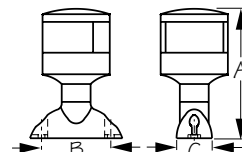
These navigation lights do not meet the USCG 33 CFR 183.810/ABYC standard A-16 from 2016, but can be used as replacement lights on vessels manufactured before 11/1/2003.

⚠ WARNING: Cancer and Reproductive Harm - www.P65Warnings.ca.gov



LED MASTHEAD LIGHT

Injection Molded Polycarbonate



Bulk	Display	A	B	C	D	NMMA Type Accepted #	Fastener	Wt.(lb.)	Std. Pack
400022	400022-1	4-5/16"	2-1/4"	1-1/8"	3"	254282	#12 RH	.24	1 ea

This LED 225° Masthead Light is fixed mounted and approved for USCG 2 NM (Colreg 2 mile). Constructed of UV stabilized injection molded polycarbonate. Installs with two #12 RH fasteners (not included). 12VDC. Low amp draw.

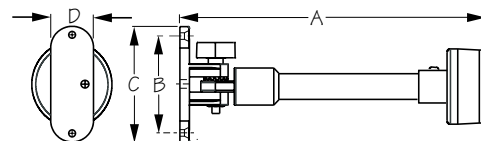
All USCG approved navigation lights must be mounted properly to provide the correct visual alignment and allow unimpeded sight lines. Please refer to USCG regulations for 1 NM and 2 NM navigation lights for more information.

⚠ WARNING: Cancer and Reproductive Harm - www.P65Warnings.ca.gov



LED FOLD DOWN ALL AROUND PONTOON LIGHT

Injection Molded Nylon/Aluminum



Bulk	Display	A	B	C	D	NMMA Type Accepted #	Fastener	Wt.(lb.)	Std. Pack
400023	400023-1	9"	2-7/8"	3-3/8"	1-1/4"	2549286	#10 FH	.29	1 ea
400026	400026-1	24"	2-7/8"	3-3/8"	1-1/4"	2549287	#10 FH	.42	1 ea

These LED Fold Down 360° All Around Pontoon Lights are approved for USCG 2 NM (Colreg 2 mile). Mounts on 1-1/4" square tubing. Constructed of injection molded nylon and aluminum. Installs with three #10 FH fasteners (not included). 12VDC. Low amp draw.

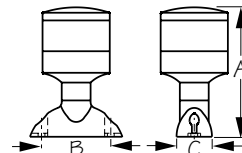
All USCG approved navigation lights must be mounted properly to provide the correct visual alignment and allow unimpeded sight lines. Please refer to USCG regulations for 1 NM and 2 NM navigation lights for more information.

⚠ WARNING: Cancer and Reproductive Harm - www.P65Warnings.ca.gov



LED ALL AROUND LIGHT

Injection Molded Polycarbonate

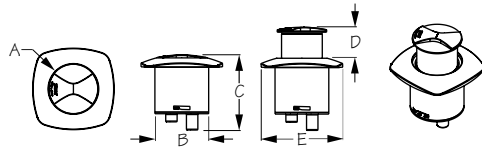


Bulk	Display	A	B	C	D	NMMA Type Accepted #	Fastener	Wt.(lb.)	Std. Pack
400042	400042-1	4-5/16"	2-1/4"	1-1/8"	3"	2549284	#12 RH	.24	1 ea

This LED 360° All Around Light is fixed mounted and approved for USCG 2 NM (Colreg 2 mile). Constructed of UV stabilized injection molded polycarbonate. Installs with two #12 RH fasteners (not included). 12VDC. Low amp draw.

All USCG approved navigation lights must be mounted properly to provide the correct visual alignment and allow unimpeded sight lines. Please refer to USCG regulations for 1 NM and 2 NM navigation lights for more information.

⚠ WARNING: Cancer and Reproductive Harm - www.P65Warnings.ca.gov

**LED POP-OUT COMBINATION BOW LIGHT**

Investment Cast 316 Stainless Steel/ABS



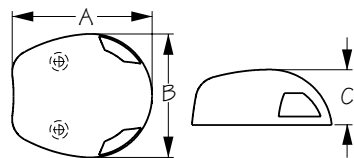
Bulk	Display	Light Arc	A	B	C	D	E	NMMA Type Accepted #	Wt.(lb.)	Std. Pack
n/a	400054-3	10 pts	2-3/8"	2-5/8"	3-7/8"	1-3/8"	3-15/16"	2602060	.50	1 ea



The LED Pop-Out Combination Bow Light is approved for USCG 2 NM (Colreg 2 mile). A simple twist of the cap allows the light to pop up, ready to use when it's switched on. Push the cap down, twist to lock, and light disappears into the deck. Constructed of corrosion resistant investment cast stainless steel cap and bezel. Installs with three #10 fasteners (included). IP67 waterproof rating.

All USCG approved navigation lights must be mounted properly to provide the correct visual alignment and allow unimpeded sight lines. Please refer to USCG regulations for 1 NM and 2 NM navigation lights for more information.

⚠ WARNING: Cancer and Reproductive Harm - www.P65Warnings.ca.gov

**LED COMBINATION BOW LIGHT**

Stamped 304 Stainless Steel or Injection Molded ABS

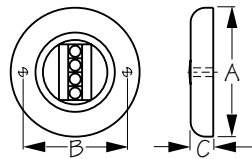


Bulk	Display	A	B	C	NMMA Type Accepted #	Finish	Fastener	Wt.(lb.)	Std. Pack
400058	400058-1	2-9/16"	2-1/4"	1"	2549288	Black	#8 RH	.29	1 ea
400059	400059-1	2-9/16"	2-1/4"	1"	2549289	Stainless	#8 RH	.29	1 ea

Black LED Combination Bow Light (400058) is approved for USCG 1 NM (Colreg 1 mile) and is constructed of injection molded ABS with a Zamak base. Stainless LED Combination Bow Light (400059) is approved for USCG 2 NM (Colreg 2 mile) and is constructed of corrosion resistant stamped 304 stainless steel with a cast 316 stainless steel base. Installs with two #8 RH fasteners (not included). IP67 waterproof rating.

All USCG approved navigation lights must be mounted properly to provide the correct visual alignment and allow unimpeded sight lines. Please refer to USCG regulations for 1 NM and 2 NM navigation lights for more information.

⚠ WARNING: Cancer and Reproductive Harm - www.P65Warnings.ca.gov

**LED TRANSOM LIGHT - ROUND**

Stamped 304 Stainless Steel

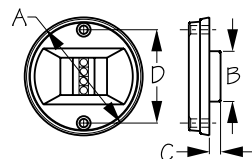


Bulk	Display	A	B	C	NMMA Type Accepted #	Finish	Fastener	Wt.(lb.)	Std. Pack
400033	400033-1	3-1/4"	2-1/2"	9/16"	2549283	Stainless	#8 RH	.16	1 ea

This Round LED Transom Light is approved for USCG 2 NM (Colreg 2 mile). Constructed of corrosion resistant stamped 304 stainless steel. Installs with two #8 RH fasteners (not included).

All USCG approved navigation lights must be mounted properly to provide the correct visual alignment and allow unimpeded sight lines. Please refer to USCG regulations for 1 NM and 2 NM navigation lights for more information.

⚠ WARNING: Cancer and Reproductive Harm - www.P65Warnings.ca.gov

**LED TRANSOM LIGHT - ROUND**

Stamped 304 Stainless Steel



Bulk	Display	A	B	C	D	NMMA Type Accepted #	Finish	Fastener	Wt.(lb.)	Std. Pack
n/a	400060-1	3-3/16"	1-3/8"	5/16"	2-1/2"	2513991	Stainless	#12 FH	.15	5 ea

This Round LED Transom Light is approved for USCG 2 NM (Colreg 2 mile). Constructed of corrosion resistant stamped 304 stainless steel. Installs with two #12 FH fasteners (not included). 12V.

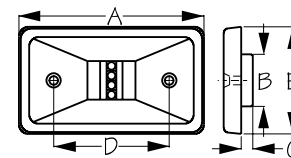
All USCG approved navigation lights must be mounted properly to provide the correct visual alignment and allow unimpeded sight lines. Please refer to USCG regulations for 1 NM and 2 NM navigation lights for more information.

⚠ WARNING: Cancer and Reproductive Harm - www.P65Warnings.ca.gov



LED TRANSM LIGHT - RECTANGULAR

Stamped 304 Stainless Steel



Bulk	Display	A	B	C	D	E	NMMA Type Accepted #	Finish	Wt.(lb.)	Std. Pack
n/a	400065-1	4-3/4"	1-3/8"	5/16"	3"	2-3/4"	2513994	Stainless	.20	5 ea

This Rectangular LED Transom Light is approved for USCG 2 NM (Colreg 2 mile). Constructed of corrosion resistant stamped 304 stainless steel. Installs with two #12 FH fasteners (not included). 12V. Does not include gasket.

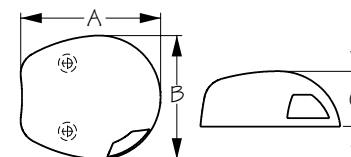
All USCG approved navigation lights must be mounted properly to provide the correct visual alignment and allow unimpeded sight lines. Please refer to USCG regulations for 1 NM and 2 NM navigation lights for more information.

⚠ WARNING: Cancer and Reproductive Harm - www.P65Warnings.ca.gov



LED TOP MOUNT SIDE LIGHTS

Stamped 304 Stainless Steel Housing/Investment Cast 316 Stainless Steel Base



Bulk	Display	A	B	C	NMMA Type Accepted #	Finish	Fastener	Wt.(lb.)	Std. Pack
400069	400069-1	2-9/16"	2-1/4"	1"	2549291	Stainless	#8 RH	.58	1 pr

These LED Top Mount Side Navigation Lights are approved for USCG 2 NM (Colreg 2 mile). Includes port and starboard lights. Constructed of corrosion resistant stamped 304 stainless steel with an investment cast 316 stainless steel base. Installs with four #8 RH fasteners (not included). IP67 waterproof rating.

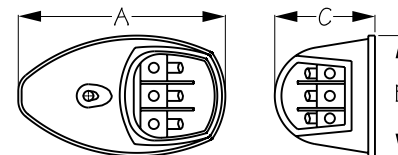
All USCG approved navigation lights must be mounted properly to provide the correct visual alignment and allow unimpeded sight lines. Please refer to USCG regulations for 1 NM and 2 NM navigation lights for more information.

⚠ WARNING: Cancer and Reproductive Harm - www.P65Warnings.ca.gov



LED SIDE MOUNT LIGHTS

Stamped 304 Stainless Steel or Injection Molded ABS



Bulk	Display	A	B	C	NMMA Type Accepted #	Finish	Fastener	Wt.(lb.)	Std. Pack
n/a	400070-1	3-7/8"	2-1/4"	1-7/8"	2513995	Stainless	#8 FH	.40	6 pr
n/a	400071-1	3-7/8"	2-1/4"	1-7/8"	2513996	White	#8 FH	.34	6 pr
n/a	400073-1	3-7/8"	2-1/4"	1-7/8"	2513997	Black	#8 FH	.34	6 pr

These LED Side Mount Navigation Lights are approved for USCG 2 NM (Colreg 2 mile). Includes port and starboard lights. 400070 is constructed of corrosion resistant stamped 304 stainless steel. 400071 and 400072 are constructed of injection molded ABS. Installs with two #8 FH fasteners (not included).

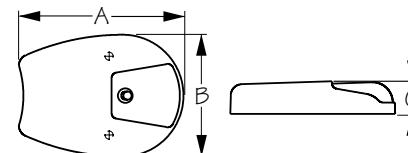
All USCG approved navigation lights must be mounted properly to provide the correct visual alignment and allow unimpeded sight lines. Please refer to USCG regulations for 1 NM and 2 NM navigation lights for more information.

⚠ WARNING: Cancer and Reproductive Harm - www.P65Warnings.ca.gov



LED SIDE MOUNT LIGHTS

Stamped 304 Stainless Steel or Injection Molded ABS

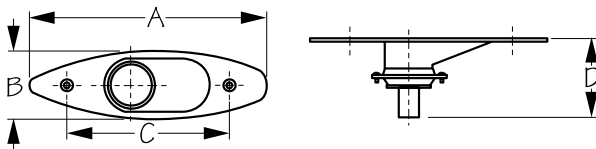


Bulk	Display	A	B	C	NMMA Type Accepted #	Finish	Fastener	Wt.(lb.)	Std. Pack
400078	400078-1	3-9/16"	2-5/8"	3/4"	2549292	Black	#8 FH	.40	1 pr
400079	400079-1	3-9/16"	2-5/8"	3/4"	2549293	Stainless	#8 FH	.40	1 pr

LED Side Mount Lights (400078) are approved for USCG 1 NM (Colreg 1 mile). LED Side Mount Side Lights (400079) are approved for USCG 2 NM (Colreg 2 mile). Includes port and starboard lights. Constructed of corrosion resistant stamped 304 stainless steel or injection molded ABS. Installs vertically with two #8 FH fasteners (not included). 12VDC. Low amp draw.

All USCG approved navigation lights must be mounted properly to provide the correct visual alignment and allow unimpeded sight lines. Please refer to USCG regulations for 1 NM and 2 NM navigation lights for more information.

⚠ WARNING: Cancer and Reproductive Harm - www.P65Warnings.ca.gov

**LED FLUSH MOUNT SIDE LIGHTS**

Stamped 304 Stainless Steel

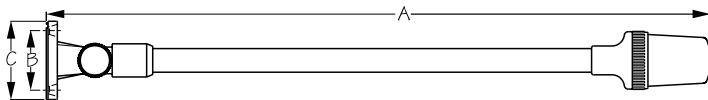


Bulk	Display	Light Arc	A	B	C	D	NMMA Type Accepted #	Fastener	Wt.(lb.)	Std. Pack
400080	400080-1	10 pts.	7-3/4"	2-5/16"	5-5/16"	2-11/16"	2549294	#8 RH	.68	1 pr

LED Flush Mount Side Lights are approved for USCG 1 NM (Colreg 1 mile). Direct replacement for 400180. Includes port and starboard lights. Constructed of corrosion resistant stamped 304 stainless steel. Installs with four #8 RH fasteners (not included). 12V.

All USCG approved navigation lights must be mounted properly to provide the correct visual alignment and allow unimpeded sight lines. Please refer to USCG regulations for 1 NM and 2 NM navigation lights for more information.

⚠ WARNING: Cancer and Reproductive Harm - www.P65Warnings.ca.gov

**FOLD DOWN ALL AROUND LIGHT**

Injection Molded Nylon/Aluminum

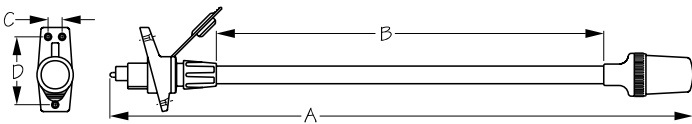


Bulk	Display	A	B	C	Fastener	Wt.(lb.)	Std. Pack
n/a	400110-1	26-3/16"	1-15/16"	2-1/2"	#10 FH	.41	1 ea
n/a	400111-1	Replacement Lens				.03	10 ea
441004	441004-1	Replacement Bulb (Double Contact Bayonet Base)				.01 / .02	10 ea / 10 pr

This Fold Down 360° All Around Light is for replacement of existing lighting (not for new construction). Folds down easily for storage. Constructed of injection molded nylon and aluminum with a white translucent lens. Installs with four #10 FH fasteners (not included). 12VDC.

These navigation lights do not meet the USCG 33 CFR 183.810/ABYC standard A-16 from 2016, but do meet the USCG 33 CFR/ABYC standard A-16 from 1997.

⚠ WARNING: Cancer and Reproductive Harm - www.P65Warnings.ca.gov

**REMOVABLE ALL AROUND LIGHT**

Injection Molded Nylon/Aluminum

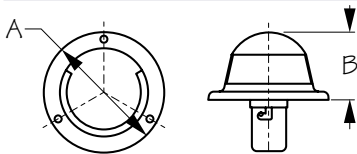


Bulk	Display	A	B	C	D	Fastener	Wt.(lb.)	Std. Pack
n/a	400112-1	24-7/8"	16-1/2"	5/8"	2-7/8"	#8 FH	.41	1 ea
n/a	400111-1	Replacement Lens					.03	10 ea
441004	441004-1	Replacement Bulb (Double Contact Bayonet Base)					.01 / .02	10 ea / 10 pr

This Removable 360° All Around Light is for replacement of existing lighting (not for new construction). Includes a removable pole for storage. Constructed of injection molded nylon and aluminum with a white translucent lens. Installs with three #8 FH fasteners (not included). 12VDC.

These navigation lights do not meet the USCG 33 CFR 183.810/ABYC standard A-16 from 2016, but do meet the USCG 33 CFR/ABYC standard A-16 from 1997.

⚠ WARNING: Cancer and Reproductive Harm - www.P65Warnings.ca.gov

**MASTHEAD LIGHT**

Stamped 304 Stainless Steel



Bulk	Display	Light Arc	A	B	Fastener	Wt.(lb.)	Std. Pack
400120	400120-1	20 pts	2-5/16"	1-3/8"	#4 RH	.18	1 ea / 5 ea
n/a	400121-1	Replacement Lens				.03	10 ea
OP40011	n/a	Replacement Socket				.06	1 ea
441032	441032-1	Replacement Bulb (Double Contact Bayonet Base)				.01 / .02	10 ea / 10 pr

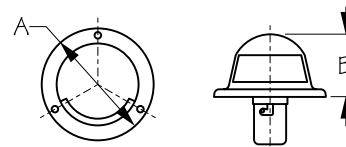
This 225° Masthead Light is for replacement of existing lighting (not for new construction). Constructed of corrosion resistant stamped 304 stainless steel. Installs with three #4 RH fasteners (not included).

These navigation lights do not meet the USCG 33 CFR 183.810/ABYC standard A-16 from 2016, but do meet the USCG 33 CFR/ABYC standard A-16 from 1997.

⚠ WARNING: Cancer and Reproductive Harm - www.P65Warnings.ca.gov

**STERN LIGHT**

Stamped 304 Stainless Steel



Bulk	Display	Light Arc	A	B	Fastener	Wt.(lb.)	Std. Pack
400130	400130-1	12 pts	2-5/16"	1-3/8"	#4 RH	.16	1 ea / 5 ea
n/a	400121-1	Replacement Lens				.03	10 ea
0P40011	n/a	Replacement Socket				.06	1 ea
441032	441032-1	Replacement Bulb (Double Contact Bayonet Base)				.01 / .02	10 ea / 10 pr

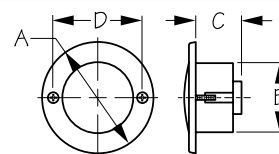
This 135° Stern Light is for replacement of existing lighting (not for new construction). Constructed of corrosion resistant stamped 304 stainless steel. Installs with three #4 RH fasteners (not included).

These navigation lights do not meet the USCG 33 CFR 183.810/ABYC standard A-16 from 2016, but do meet the USCG 33 CFR/ABYC standard A-16 from 1997.

⚠ **WARNING:** Cancer and Reproductive Harm - www.P65Warnings.ca.gov

**TRANSOM LIGHT - ROUND**

Stamped 304 Stainless Steel



Bulk	Display	A	B	C	D	Fastener	Wt.(lb.)	Std. Pack
400135	400135-1	3-1/8"	2"	1-1/4"	2-1/2"	#8 FH	.15	1 ea / 5 ea
441035	441035-1	Replacement Bulb (Festoon Style)					.01 / .02	10 ea / 10 pr

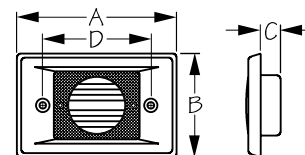
This Round Transom Light is for replacement of existing lighting (not for new construction). Constructed of corrosion resistant stamped 304 stainless steel. Installs with two #8 FH fasteners (not included).

These navigation lights do not meet the USCG 33 CFR 183.810/ABYC standard A-16 from 2016, but do meet the USCG 33 CFR/ABYC standard A-16 from 1997.

⚠ **WARNING:** Cancer and Reproductive Harm - www.P65Warnings.ca.gov

**TRANSOM LIGHT - RECTANGULAR**

Stamped 304 Stainless Steel



Bulk	Display	A	B	C	D	Fastener	Wt.(lb.)	Std. Pack
400136	400136-1	4-3/4"	3"	3/4"	3-1/4"	#10 FH	.30	1 ea / 5 ea
441035	441035-1	Replacement Bulb (Festoon Style)					.01 / .02	10 ea / 10 pr

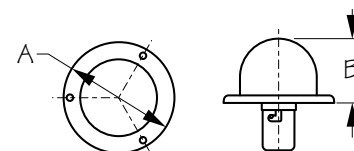
This Rectangular Transom Light is for replacement of existing lighting (not for new construction). Constructed of corrosion resistant stamped 304 stainless steel. Installs with two #10 FH fasteners (not included).

These navigation lights do not meet the USCG 33 CFR 183.810/ABYC standard A-16 from 2016, but do meet the USCG 33 CFR/ABYC standard A-16 from 1997.

⚠ **WARNING:** Cancer and Reproductive Harm - www.P65Warnings.ca.gov

**ALL AROUND LIGHT**

Stamped 304 Stainless Steel

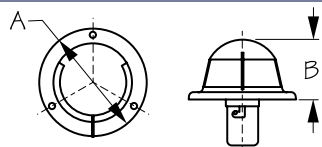


Bulk	Display	Light Arc	A	B	Fastener	Wt.(lb.)	Std. Pack
400140	400140-1	32 pts	2-5/16"	1-5/16"	#4 RH	.14	1 ea / 5 ea
n/a	400121-1	Replacement Lens				.03	10 ea
0P40011	n/a	Replacement Socket				.06	1 ea
441032	441032-1	Replacement Bulb (Double Contact Bayonet Base)				.01 / .02	10 ea / 10 pr

This 360° All Around Light is for replacement of existing lighting (not for new construction). Constructed of corrosion resistant stamped 304 stainless steel. Installs with three #4 RH fasteners (not included).

These navigation lights do not meet the USCG 33 CFR 183.810/ABYC standard A-16 from 2016, but do meet the USCG 33 CFR/ABYC standard A-16 from 1997.

⚠ **WARNING:** Cancer and Reproductive Harm - www.P65Warnings.ca.gov

**COMBINATION BOW LIGHT - ROUND**

Stamped 304 Stainless Steel

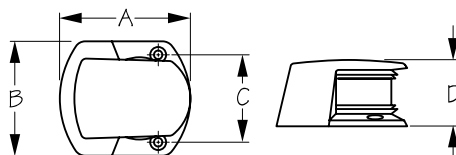


Bulk	Display	Light Arc	A	B	Fastener	Wt.(lb.)	Std. Pack
400150	400150-1	20 pts	2-5/16"	1-3/8"	#4 RH	.18	1 ea / 5 ea
n/a	400151-1	Replacement Lens			#4 RH	.03	10 ea
OP40011	n/a	Replacement Socket				.06	1 ea
441032	441032-1	Replacement Bulb (Double Contact Bayonet Base)				.01 / .02	10 ea / 10 pr

This Round Combination Bow Light is for replacement of existing lighting (not for new construction). Constructed of corrosion resistant stamped 304 stainless steel. Installs with three #4 RH fasteners (not included).

These navigation lights do not meet the USCG 33 CFR 183.810/ABYC standard A-16 from 2016, but do meet the USCG 33 CFR/ABYC standard A-16 from 1997.

⚠ WARNING: Cancer and Reproductive Harm - www.P65Warnings.ca.gov

**COMBINATION BOW LIGHT**

Die Cast Chrome Zinc

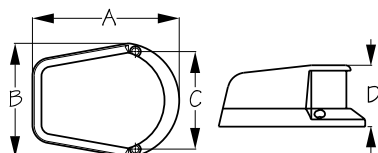


Bulk	Display	A	B	C	D	Fastener	Wt.(lb.)	Std. Pack
400155	400155-1	2-7/8"	2-9/16"	1-15/16"	1-1/2"	#10 FH	.50	1 ea / 5 ea
441032	441032-1	Replacement Bulb (Double Contact Bayonet Base)					.01 / .02	10 ea / 10 pr

This Combination Bow Light is for replacement of existing lighting (not for new construction). Constructed of die cast chrome zinc. Installs with two #10 FH fasteners (not included). Recommended for fresh water use.

These navigation lights do not meet the USCG 33 CFR 183.810/ABYC standard A-16 from 2016, but do meet the USCG 33 CFR/ABYC standard A-16 from 1997.

⚠ WARNING: Cancer and Reproductive Harm - www.P65Warnings.ca.gov

**COMBINATION BOW LIGHT - LOW PROFILE**

Die Cast Chrome Zinc

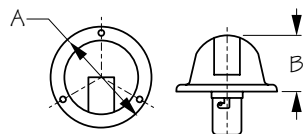


Bulk	Display	A	B	C	D	Fastener	Wt.(lb.)	Std. Pack
400157	400157-1	4-1/16"	3-3/16"	2-11/16"	1-11/16"	#10 FH	.36	1 ea / 5 ea
441854	441854-1	Replacement Bulb (Festoon Style)					.01 / .02	10 ea / 10 pr

Low Profile Combination Bow Light is for replacement of existing lighting (not for new construction). Lens can be reversed for under mounting. Constructed of die cast chrome zinc. Installs with two #10 FH fasteners (not included). Recommended for fresh water use.

These navigation lights do not meet the USCG 33 CFR 183.810/ABYC standard A-16 from 2016, but do meet the USCG 33 CFR/ABYC standard A-16 from 1997.

⚠ WARNING: Cancer and Reproductive Harm - www.P65Warnings.ca.gov

**SIDE MOUNT LIGHTS**

Stamped 304 Stainless Steel



Bulk	Display	Light Arc	A	B	Fastener	Wt.(lb.)	Std. Pack
400160	400160-1	10 pts	2-5/16"	1-3/8"	#4 RH	.33	1 pr / 5 pr
n/a	400161-1	Replacement Lens				.05	10 pr
OP40011	n/a	Replacement Socket				.06	1 ea
441032	441032-1	Replacement Bulb (Double Contact Bayonet Base)				.01 / .02	10 ea / 10 pr

Side Mount Lights are for replacement of existing lighting (not for new construction). Includes port and starboard lights. Constructed of corrosion resistant stamped 304 stainless steel. Installs with six #4 RH fasteners (not included).

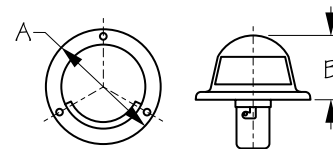
These navigation lights do not meet the USCG 33 CFR 183.810/ABYC standard A-16 from 2016, but do meet the USCG 33 CFR/ABYC standard A-16 from 1997.

⚠ WARNING: Cancer and Reproductive Harm - www.P65Warnings.ca.gov



TOP MOUNT SIDE LIGHTS

Stamped 304 Stainless Steel



Bulk	Display	Light Arc	A	B	Fastener	Wt.(lb.)	Std. Pack
400165	400165-1	10 pts	2-5/16"	1-3/8"	#4 RH	.33	1 pr / 5 pr
OP40011	n/a	Replacement Socket				.06	1 ea
n/a	400161-1	Replacement Lens				.05	10 pr
441032	441032-1	Replacement Bulb (Double Contact Bayonet Base)				.01 / .02	10 ea / 10 pr

Top Mount Side Lights are for replacement of existing lighting (not for new construction). Includes port and starboard lights. Constructed of corrosion resistant stamped 304 stainless steel. Installs with six #4 RH fasteners (not included).

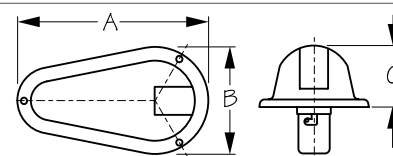
These navigation lights do not meet the USCG 33 CFR 183.810/ABYC standard A-16 from 2016, but do meet the USCG 33 CFR/ABYC standard A-16 from 1997.

⚠ WARNING: Cancer and Reproductive Harm - www.P65Warnings.ca.gov



SIDE MOUNT LIGHTS

Stamped 304 Stainless Steel



Bulk	Display	Light Arc	A	B	C	Fastener	Wt.(lb.)	Std. Pack
400170	400170-1	10 pts	4"	2-5/16"	1-3/8"	#4 RH	.45	1 pr / 5 pr
OP40012	n/a	Replacement Socket					.08	1 ea
n/a	400161-1	Replacement Lens					.05	10 pr
441032	441032-1	Replacement Bulb (Double Contact Bayonet Base)					.01 / .02	10 ea / 10 pr

Side Mount Lights are for replacement of existing lighting (not for new construction). Includes port and starboard lights. Constructed of corrosion resistant stamped 304 stainless steel. Installs with six #4 RH fasteners (not included).

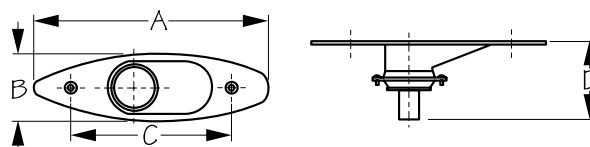
These navigation lights do not meet the USCG 33 CFR 183.810/ABYC standard A-16 from 2016, but do meet the USCG 33 CFR/ABYC standard A-16 from 1997.

⚠ WARNING: Cancer and Reproductive Harm - www.P65Warnings.ca.gov



FLUSH MOUNT SIDE LIGHTS

Stamped 304 Stainless Steel

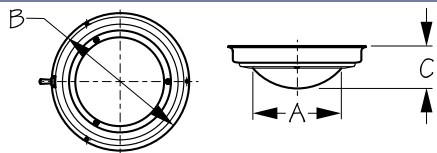


Bulk	Display	Light Arc	A	B	C	D	Fastener	Wt.(lb.)	Std. Pack
400180	400180-1	10 pts	7-3/4"	2-5/16"	5-5/16"	2-11/16"	#8 RH	.68	1 pr / 5 pr
n/a	400181-1	Replacement Lens						.05	10 pr
OP40010	n/a	Replacement Socket Assembly						.05	1 ea
441032	441032-1	Replacement Bulb (Double Contact Bayonet Base)						.01 / .02	10 ea / 10 pr

Flush Mount Side Lights are approved for USCG 1 NM (A-16). Includes port and starboard lights. Constructed of corrosion resistant stamped 304 stainless steel. Installs with four #8 RH fasteners (not included).

All USCG approved navigation lights must be mounted properly to provide the correct visual alignment and allow unimpeded sight lines. Please refer to USCG regulations for 1 NM and 2 NM navigation lights for more information.

⚠ WARNING: Cancer and Reproductive Harm - www.P65Warnings.ca.gov

**DOMELIGHT**

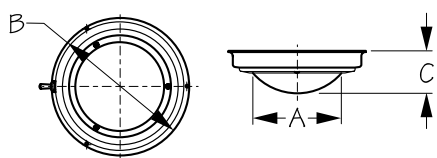
Stamped 304 Stainless Steel



Bulk	Display	A	B	C	Fastener	Wt.(lb.)	Std. Pack
400190	400190-1	4"	5-1/2"	2"	#4 RH	.60	1 ea / 5 ea
400200	400200-1	5"	6-3/4"	2-1/8"	#6 RH	.87	1 ea / 5 ea
n/a	400191-1	Replacement Lens 4"				.28	5 ea
n/a	400201-1	Replacement Lens 5"				.36	5 ea
OP40002	n/a	Replacement Switch				.05	1 ea
OP40015	n/a	Replacement Socket Assembly				.03	1 ea
441142	441142-1	Replacement Bulb - for 400200 (Double Contact Bayonet Base)				.01 / .02	10 ea / 10 pr
n/a	442042-1	Double Contact Bayonet Base G4 Adapter				.01	5 ea

These Dome Lights are prewired with an on/off toggle switch and supplied with a 18.4 watt DC double contact bayonet bulb. Can be converted to LED with a bayonet bulb socket adapter (442042-1) BA15D style base and G4 bulb (sold separately). Constructed of corrosion resistant stamped 304 stainless steel. Surface mounts with three RH fasteners (not included). 12VDC.

▲ **WARNING:** Cancer and Reproductive Harm - www.P65Warnings.ca.gov

**LED DOMELIGHT**

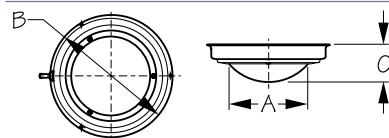
Stamped 304 Stainless Steel



Bulk	Display	A	B	C	Fastener	Wt.(lb.)	Std. Pack
400193	400193-1	4"	5-1/2"	2"	#4 RH	.60	1 ea / 5 ea
400203	400203-1	5"	6-3/4"	2-1/8"	#6 RH	.87	1 ea / 5 ea
n/a	400213-1	3"	4-3/8"	1-3/8"	#4 RH	.36	5 ea
n/a	400191-1	Replacement Lens 4"				.28	5 ea
n/a	400201-1	Replacement Lens 5"				.36	5 ea
OP40002	n/a	Replacement Switch				.05	1 ea

These vibration resistant LED Dome Lights are prewired with an on/off toggle switch. With the low current consumption of 0.068 amps @ 12 volts, they give off very little heat and have extremely long service life. Features 12 white LEDs per light. Constructed of corrosion resistant stamped 304 stainless steel. Surface mounts with three RH fasteners (not included).

▲ **WARNING:** Cancer and Reproductive Harm - www.P65Warnings.ca.gov

**DOMELIGHT**

Stamped Polished Brass



Bulk	Display	A	B	C	Fastener	Wt.(lb.)	Std. Pack
400195	400195-1	4"	5-1/2"	1-13/16"	#4 RH	.60	1 ea / 5 ea
400205	400205-1	5"	6-3/4"	2-1/16"	#6 RH	.87	1 ea / 5 ea
n/a	400201-1	Replacement Lens 5"				.36	5 ea
OP40002	n/a	Replacement Switch				.05	1 ea
OP40015	n/a	Replacement Socket Assembly				.03	1 ea
441142	441142-1	Replacement Bulb (Double Contact Bayonet Base)				.01 / .02	10 ea / 10 pr
n/a	442042-1	Double Contact Bayonet Base G4 Adapter				.01	5 ea

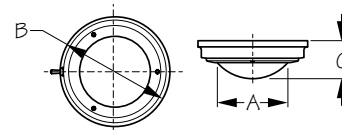
These Dome Lights are prewired with an on/off toggle switch and include an 18.4 watt DC double contact bayonet bulb. Can be converted to LED with bayonet bulb socket adapter (442042-1) BA15D style base and G4 bulb (sold separately). Constructed of stamped polished brass with a lacquer coating to prevent tarnish. Installs with three RH fasteners (not included). 12VDC.

▲ **WARNING:** Cancer and Reproductive Harm - www.P65Warnings.ca.gov



LED DOME LIGHT

Teak/Stamped Polished Brass



Bulk	Display	A	B	C	Fastener	Wt.(lb.)	Std. Pack
400209	400209-1	5"	6-1/8"	2-1/16"	#8 FH	.95	1 ea / 5 ea
n/a	400201-1	Replacement Lens 5"				.36	5 ea
OP40002	n/a	Replacement Switch				.05	1 ea

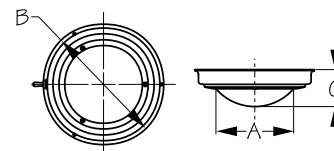
This vibration resistant LED Dome Light is prewired with on/off toggle switch. With the low current consumption of 0.068 amps @ 12 volts, they give off very little heat and have extremely long service life. Features 12 white LEDs per light. Constructed of solid teak base with a lacquer coated brass trim ring. Surface mounts with #8 FH fasteners (not included).

⚠ WARNING: Cancer and Reproductive Harm - www.P65Warnings.ca.gov



LED DOME LIGHT

Stamped Polished Brass



Bulk	Display	A	B	C	Fastener	Wt.(lb.)	Std. Pack
400198	400198-1	4"	5-1/2"	1-13/16"	#4 RH	.60	1 ea / 5 ea
400208	400208-1	5"	6-3/4"	2-1/16"	#6 RH	.87	1 ea / 5 ea
n/a	400201-1	Replacement Lens 5"				.36	5 ea
OP40002	n/a	Replacement Switch				.05	1 ea

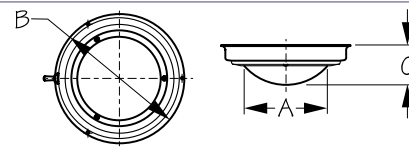
These vibration resistant LED Dome Lights are prewired with an on/off toggle switch. With the low current consumption of 0.068 amps @ 12 volts, they give off very little heat and have extremely long service life. Features 18 white LEDs per light. Constructed of stamped polished brass with a lacquer coating to prevent tarnish. Installs with three RH fasteners (not included).

⚠ WARNING: Cancer and Reproductive Harm - www.P65Warnings.ca.gov



DAY/NIGHT DOME LIGHT

Stamped 304 Stainless Steel



Bulk	Display	A	B	C	Fastener	Wt.(lb.)	Std. Pack
400350	400350-1	5"	6-3/4"	2"	#6 RH	1.03	1 ea / 5 ea
400350DE	n/a	5"	6-3/4"	2"	#6 RH	1.05	1 ea
n/a	400201-1	Replacement Lens 5"				.36	5 ea
441142	441142-1	Replacement Bulb (Double Contact Bayonet Base)				.01 / .02	10 ea / 10 pr
441143	441143-1	Replacement Bulb (Red-Double Contact Bayonet Base)				.01 / .02	10 ea / 10 pr
n/a	442042-1	Double Contact Bayonet Base G4 Adapter				.01	5 ea

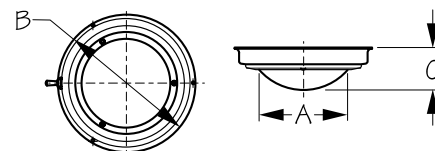
These Day/Night Dome Lights are prewired with an on/off/on toggle switch and feature two separate light circuits. Both light circuits are equipped with 18.4 watt DC double contact bayonet bulbs. One circuit uses a clear bulb and the other circuit uses a red night vision bulb. 400350DE has a Deutsch DT04-2 Plug for OEM convenience. Can be converted to LED with bayonet bulb socket adapter (442042-1) BA15D style base and G4 bulbs (sold separately). Constructed of corrosion resistant stamped and polished 304 stainless steel. Surface mounts with three #6 RH fasteners (not included). 12VDC.

⚠ WARNING: Cancer and Reproductive Harm - www.P65Warnings.ca.gov



LED DAY/NIGHT DOME LIGHT

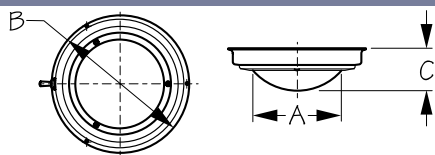
Stamped 304 Stainless Steel



Bulk	Display	A	B	C	Fastener	Wt.(lb.)	Std. Pack
400353	400353-1	5"	6-3/4"	2"	#6 RH	1.03	1 ea / 5 ea
n/a	400201-1	Replacement Lens 5"				.36	5 ea

This vibration resistant LED Day/Night Dome Light is prewired with an on/off/on toggle switch and feature two separate light circuits. One circuit uses a clear bulb and the other circuit uses a red night vision bulb. With the low current consumption of 0.068 amps @ 12 volts, they give off very little heat and have extremely long service life. Features 15 white and 5 red LEDs per light. Constructed of corrosion resistant stamped 304 stainless steel. Surface mounts with three #6 RH fasteners (not included).

⚠ WARNING: Cancer and Reproductive Harm - www.P65Warnings.ca.gov

**LED DAY/NIGHT DOME LIGHT**

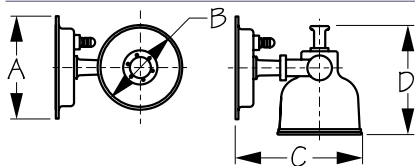
Stamped Polished Brass



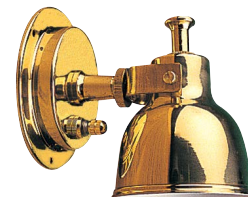
Bulk	Display	A	B	C	Fastener	Wt.(lb.)	Std. Pack
400358	400358-1	5"	6-3/4"	2-1/8"	#6 RH	.87	1 ea / 5 ea
n/a	400201-1	Replacement Lens 5"				.36	5 ea

This vibration resistant LED Day/Night Dome Light is prewired with an on/off/on toggle switch and features two separate light circuits. One circuit uses a clear bulb and the other circuit uses a red night vision bulb. With the low current consumption of 0.068 amps @ 12 volts, they give off very little heat and feature an extremely long service life. Features 18 white and 12 red LEDs per light. Constructed of stamped polished brass with a lacquer coating to prevent tarnish. Surface mounts with three #6 RH fasteners (not included).

⚠ **WARNING:** Cancer and Reproductive Harm - www.P65Warnings.ca.gov

**BERTH LIGHT**

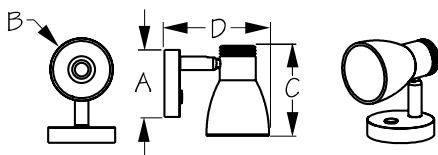
Machined and Stamped Polished Brass



Bulk	Display	Description	A	B	C	D	Finish	Fastener	Wt.(lb.)	Std. Pack
400400	400400-1	Small	3-9/16"	2-15/16"	4-3/8"	3-3/4"	Brass	#6 RH	.72	5 ea
400410	400410-1	Large	3-9/16"	4-3/8"	6-3/16"	5-1/4"	Brass	#6 RH	.88	5 ea
OP40001	n/a	Replacement Switch							.03	1 ea
441142	441142-1	Replacement Bulb (Double Contact Bayonet Base)							.01 / .02	10 ea / 10 pr
n/a	442042-1	Double Contact Bayonet Base G4 Adapter							.01	5 ea

This Berth Light is prewired with integral on/off switch and includes a 15 watt DC double contact bayonet style bulb. Can be converted to LED with bayonet bulb socket adapter (442042-1) BA150 style base and G4 bulb (sold separately). Designed for bulkhead or wall mounting. Constructed of machined and stamped brass with a lacquer coating to prevent tarnish and solid brass knurled adjusting knobs. The interior surface of the lamp shade is white enamel to reflect more light. Installs with three #6 RH fasteners (not included). 12VDC.

⚠ **WARNING:** Cancer and Reproductive Harm - www.P65Warnings.ca.gov

**LED CABIN/READING LIGHT WITH TOUCH DIMMER**

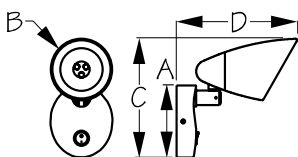
Brushed Aluminum



Bulk	Display	A	B	C	D	Volts	Finish	Fastener	Wt.(lb.)	Std. Pack
n/a	400710-3	2-1/2"	2-3/8"	3-3/8"	4"	10-24	Brushed	#6 FH	.43	5 ea

LED Cabin/Reading Light with built-in, touch controlled on/dim/off switch. This light features an adjustable direct beam reading light, as well as ambient light for the cabin. Warm white, 3000K Cree bulb provides 270 lumens @ 2W. Works with 12V and 24V systems. Constructed of high quality brushed aluminum. Includes two #6 FH fasteners and Allen wrench.

⚠ **WARNING:** Cancer and Reproductive Harm - www.P65Warnings.ca.gov

**LED CABIN/READING LIGHT**

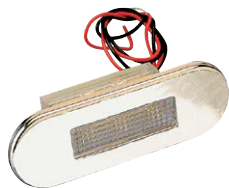
Plastic



Bulk	Display	A	B	C	D	Volts	Finish	Fastener	Wt.(lb.)	Std. Pack
n/a	400730-3	2-3/4"	2-5/8"	4-3/4"	4-1/4"	10-30	Silver	#6 FH	.22	5 ea

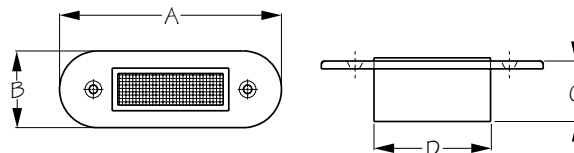
This LED Cabin/Reading Light features an adjustable light angle for directed lighting. G4 LED 2W (warm white) bulb included. Prewired with integral on/off rocker switch. 150 lumens. Installs with four #6 FH fasteners (included). IP55 rating.

⚠ **WARNING:** Cancer and Reproductive Harm - www.P65Warnings.ca.gov



LED COURTESY LIGHT

Plastic/Stamped 304 Stainless Steel



Bulk	Display	A	B	C	D	Lumens	Lens Color	Fastener	Wt.(lb.)	Std. Pack
401240	401240-1	3-5/16"	1-1/8"	7/8"	1-3/4"	55	Clear	#6 FH	.04	10 ea

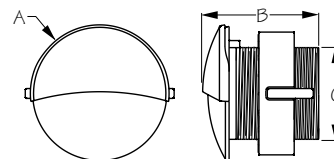
LED Courtesy Light utilizes three bright, low amp LEDs that have a very long service life. Face plate hides the mounting screws to give this light a sleek, modern look. Low amperage draw of 0.02 amps @ 12VDC produces 55 lumens. Constructed of corrosion resistant stamped 304 stainless steel. Installs with two #6 FH fasteners (not included).

⚠ WARNING: Cancer and Reproductive Harm - www.P65Warnings.ca.gov



LED FLUSH MOUNT ROUND COURTESY LIGHT

Plastic/Stamped Stainless Steel



Bulk	Display	A	B	C	Lumens	Stainless Cover	Gasket	Color	Wt.(lb.)	Std. Pack
401270	401270-1	1-1/2"	1-1/4"	1-1/8"	20	Yes/Yes	No/Yes	White	.05	10 ea / 5 ea
401274	401274-1	1-1/2"	1-1/4"	1-1/8"	20	Yes/Yes	No/Yes	Blue	.05	10 ea / 5 ea

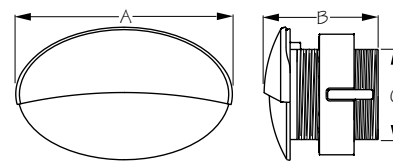
These LED Flush Mount Round Courtesy Lights feature a special lens design that aims the light downward while the stainless steel cover focuses the light, preventing it from projecting upwards. Low amperage draw of 0.02 amps @ 12VDC produces 20 lumens. Constructed of plastic and stamped stainless steel. Installs easily in a 1-1/8" diameter hole and is secured by a threaded mounting ring. Available with white or blue LEDs.

⚠ WARNING: Cancer and Reproductive Harm - www.P65Warnings.ca.gov



LED FLUSH MOUNT OVAL COURTESY LIGHT

Plastic/Stamped Stainless Steel



Bulk	Display	A	B	C	Lumens	Stainless Cover	Gasket	Color	Wt.(lb.)	Std. Pack
401275	401275-1	2-1/2"	1-1/4"	1-1/8"	20	Yes/Yes	No/Yes	White	.05	10 ea / 5 ea
401279	401279-1	2-1/2"	1-1/4"	1-1/8"	20	Yes/Yes	No/Yes	Blue	.05	10 ea / 5 ea

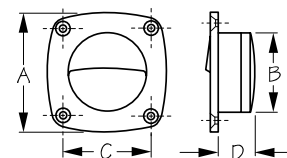
These LED Flush Mount Oval Courtesy Lights feature a special lens design that aims the light downward while the stainless steel cover focuses the light, preventing it from projecting upwards. Low amperage draw of 0.02 amps @ 12VDC produces 20 lumens. Constructed of plastic and stamped stainless steel. Installs easily in a 1-1/8" diameter hole and is secured by a threaded mounting ring. Available with white or blue LEDs.

⚠ WARNING: Cancer and Reproductive Harm - www.P65Warnings.ca.gov



LED UTILITY LIGHT

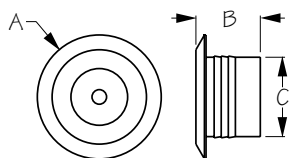
Injection Molded Delrin



Bulk	Display	A	B	C	D	Color	Finish	Fastener	Wt.(lb.)	Std. Pack
401320	401320-1	2-3/16"	1-3/4"	1-9/16"	11/16"	White	Black	#6 FH	.04	10 ea
401321	401321-1	2-3/16"	1-3/4"	1-9/16"	11/16"	White	White	#6 FH	.04	10 ea
401324	401324-1	2-3/16"	1-3/4"	1-9/16"	11/16"	Blue	Black	#6 FH	.04	10 ea
401325	401325-1	2-3/16"	1-3/4"	1-9/16"	11/16"	Blue	White	#6 FH	.04	10 ea

These LED Utility Lights feature a low amp draw blue or white LED bulb. Constructed of injection molded Delrin for strength, heat resistance, and dimensional stability. Surface mounts with four #6 FH fasteners (not included). Available in black or white.

⚠ WARNING: Cancer and Reproductive Harm - www.P65Warnings.ca.gov

**LED SNAP-IN COURTESY LIGHT**

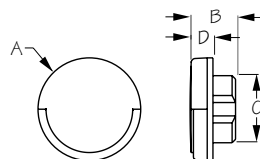
Aluminum



Bulk	Display	A	B	C	Color	Wt.(lb.)	Std. Pack
401350	401350-1	1-1/2"	13/16"	1"	White	.03	10 ea / 5 ea
401354	401354-1	1-1/2"	13/16"	1"	Blue	.03	10 ea / 5 ea

These LED Snap-In Courtesy Lights utilize one white or blue low amp LED, keeping power consumption to less than 1 watt. Constructed of durable brushed aluminum. Installs in a 1" diameter hole; no fasteners required. IP67 waterproof rating.

⚠ **WARNING:** Cancer and Reproductive Harm - www.P65Warnings.ca.gov

**LED COURTESY BUTTON LIGHT/180°**

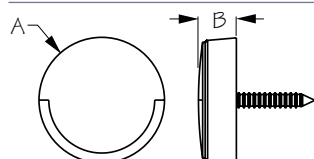
Stamped 304 Stainless Steel/Plastic



Bulk	Display	A	B	C	D	Color	Wt.(lb.)	Std. Pack
401380	401380-1	1-1/2"	11/16"	1"	1/4"	White	.03	10 ea / 5 ea
401384	401384-1	1-1/2"	11/16"	1"	1/4"	Blue	.03	10 ea / 5 ea

These 180° LED Courtesy Button Lights are designed to focus light in any direction needed. Utilizes one white or blue low amp LED, keeping power consumption to less than 1 watt. Constructed of corrosion resistant stamped 304 stainless steel cover with a lightweight plastic body. IP67 waterproof rating.

⚠ **WARNING:** Cancer and Reproductive Harm - www.P65Warnings.ca.gov

**LED SURFACE MOUNT COURTESY LIGHT/180°**

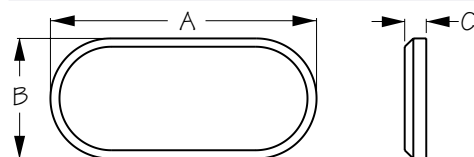
Stamped 304 Stainless Steel/Plastic



Bulk	Display	A	B	Color	Fastener	Wt.(lb.)	Std. Pack
401390	401390-1	1-1/2"	1/2"	White	#10 FH	.03	10 ea / 5 ea
401394	401394-1	1-1/2"	1/2"	Blue	#10 FH	.03	10 ea / 5 ea

These 180° LED Surface Mount Courtesy Lights are designed to focus the light in any direction needed. Utilizes one white or blue low amp LED, providing a very long service life. Constructed of corrosion resistant stamped 304 stainless steel cover with a lightweight plastic body. Installs with one #10 FH fastener (attached). IP67 waterproof rating.

⚠ **WARNING:** Cancer and Reproductive Harm - www.P65Warnings.ca.gov

**LED SURFACE MOUNT COURTESY EDGE LIGHT**

Stamped 304 Stainless Steel/Plastic



Bulk	Display	A	B	C	Volts	Color	Fastener	Wt.(lb.)	Std. Pack
401375	401375-1	3-1/8"	1-7/16"	3/16"	12	White	#10 FH	.04	10 ea / 5 ea
401379	401379-1	3-1/8"	1-7/16"	3/16"	12	Blue	#10 FH	.04	10 ea / 5 ea

These 360° LED Surface Mount Courtesy Edge Lights utilize three blue or warm white low amp LEDs, providing a very long service life. Constructed of corrosion resistant stamped 304 stainless steel and lightweight plastic. Installs with two #10 FH fasteners (not included). IP65 water resistant rating. 12VDC.

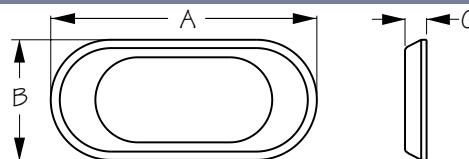
⚠ **WARNING:** Cancer and Reproductive Harm - www.P65Warnings.ca.gov





LED SURFACE MOUNT COURTESY LIGHT

Stamped 304 Stainless Steel/Plastic



Bulk	Display	A	B	C	Volts	Color	Fastener	Wt.(lb.)	Std. Pack
401405	401405-1	3-1/8"	1-7/16"	3/16"	12	White	#10 FH	.05	10 ea / 5 ea
401409	401409-1	3-1/8"	1-7/16"	3/16"	12	Blue	#10 FH	.05	10 ea / 5 ea

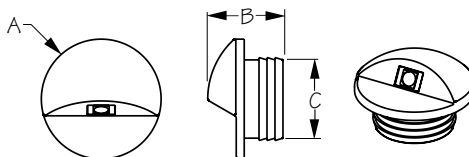
These LED Surface Mount Courtesy Lights utilize three blue or warm white low amp LEDs, providing a very long service life. Constructed of corrosion resistant stamped 304 stainless steel and lightweight plastic. Installs with two #10 FH fasteners (not included). IP65 water resistant rating. 12VDC.

⚠ WARNING: Cancer and Reproductive Harm - www.P65Warnings.ca.gov



LED ALCOR COURTESY LIGHT

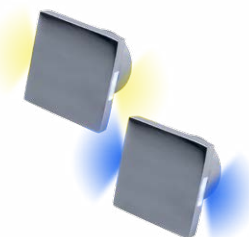
Investment Cast 316 Stainless Steel



Bulk	Display	A	B	C	Volts	Color	LEDs	Wt.(lb.)	Std. Pack
401412	401412-1	1-1/2"	1"	1"	12	White	1	.12	5 ea
401413	401413-1	1-1/2"	1"	1"	12	Blue	1	.12	5 ea

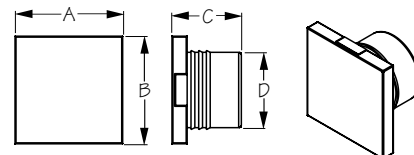
LED Alcor Courtesy Lights can be mounted to cast light up, down, or to the side, depending on the required application. Constructed of corrosion resistant investment cast 316 stainless steel. Installs in a 1" diameter hole; no fasteners required. Available with one white or blue LED. 12VDC.

⚠ WARNING: Cancer and Reproductive Harm - www.P65Warnings.ca.gov



LED SQUARE COURTESY LIGHT

Investment Cast 316 Stainless Steel



Bulk	Display	A	B	C	D	Volts	Color	LEDs	Wt.(lb.)	Std. Pack
401417	401417-1	1-3/8"	1-3/8"	15/16"	1"	12	White	2	.14	5 ea
401418	401418-1	1-3/8"	1-3/8"	15/16"	1"	12	Blue	2	.14	5 ea

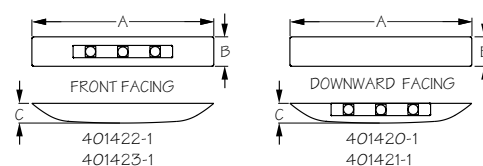
LED Square Courtesy Lights can be mounted to cast light up and down or side to side, depending on the required application. Constructed of corrosion resistant investment cast 316 stainless steel. Installs in a 1" diameter hole; no fasteners required. Available with two white or blue LEDs. 12VDC.

⚠ WARNING: Cancer and Reproductive Harm - www.P65Warnings.ca.gov



DELUXE LED COURTESY LIGHT - LARGE

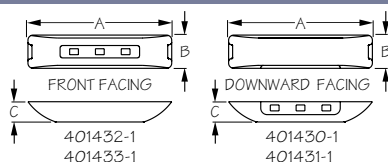
Plastic/Investment Cast 316 Stainless Steel



Bulk	Display	A	B	C	Lumens	Volts	Color	Facing	Wt.(lb.)	Std. Pack
n/a	401420-1	3-15/16"	11/16"	7/16"	20	9-28	White	Down	.08	5 ea
n/a	401421-1	3-15/16"	11/16"	7/16"	20	9-28	Blue	Down	.08	5 ea
401422	401422-1	3-15/16"	11/16"	7/16"	20	9-28	White	Forward	.08	5 ea
n/a	401423-1	3-15/16"	11/16"	7/16"	20	9-28	Blue	Forward	.08	5 ea

These Large Deluxe LED Courtesy Lights are available with outward or downward directed light. Feature 3 low amp, long life blue or white LEDs with a 20 lumen output. Constructed of a lightweight plastic body with an investment cast 316 stainless steel cover for a modern, streamlined profile. Installs with two #6 FH fasteners (not included). 9-28VDC. IP67 waterproof rating.

⚠ WARNING: Cancer and Reproductive Harm - www.P65Warnings.ca.gov

**DELUXE LED COURTESY LIGHT - SMALL**

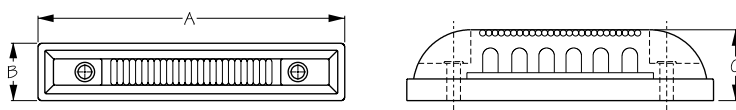
Plastic/304 Stamped Stainless Steel



Bulk	Display	A	B	C	Lumens	Volts	Color	Facing	Wt.(lb.)	Std. Pack
n/a	401430-1	2-3/4"	11/16"	3/8"	20	9-28	White	Down	.03	5 ea
n/a	401431-1	2-3/4"	11/16"	3/8"	20	9-28	Blue	Down	.03	5 ea
n/a	401432-1	2-3/4"	11/16"	3/8"	20	9-28	White	Forward	.03	5 ea
n/a	401433-1	2-3/4"	11/16"	3/8"	20	9-28	Blue	Forward	.03	5 ea

These Small Deluxe LED Courtesy Lights are available with outward or downward directed light. Feature 3 low amp, long life blue or white LEDs with a 20 lumen output. Constructed of a lightweight plastic body with an investment cast 316 stainless steel cover for a compact and contemporary design. Installs with two #6 FH fasteners (not included). 9-28VDC. IP67 waterproof rating.

⚠ WARNING: Cancer and Reproductive Harm - www.P65Warnings.ca.gov

**LED STRIP LIGHT**

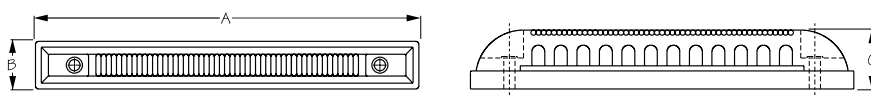
Plastic



Bulk	Display	A	B	C	LEDs	Volts	Color	Fastener	Wt.(lb.)	Std. Pack
401450	401450-1	3-15/16"	3/4"	15/16"	6	12	White	#10 RH	.06	5 ea

This LED Strip Light features 6 low amp LEDs per light. Circuit boards are epoxy potted for a water resistant seal. Constructed of corrosion resistant lightweight plastic. Installs with two #10 RH fasteners (not included). 12VDC.

⚠ WARNING: Cancer and Reproductive Harm - www.P65Warnings.ca.gov

**LED STRIP LIGHT**

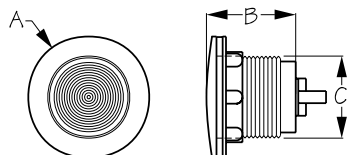
Plastic



Bulk	Display	A	B	C	LEDs	Volts	Color	Fastener	Wt.(lb.)	Std. Pack
401445	401445-1	3-15/16"	3/4"	15/16"	6	12/24	White	#10 RH	.06	5 ea
401446	401446-1	3-15/16"	3/4"	15/16"	6	12/24	Blue	#10 RH	.06	5 ea
401447	401447-1	3-15/16"	3/4"	15/16"	6	12/24	Green	#10 RH	.06	5 ea
401448	401448-1	3-15/16"	3/4"	15/16"	6	12/24	Red	#10 RH	.06	5 ea
401465	401465-1	6"	3/4"	15/16"	12	12/24	White	#10 RH	.12	5 ea
401466	401466-1	6"	3/4"	15/16"	12	12/24	Blue	#10 RH	.12	5 ea
401467	401467-1	6"	3/4"	15/16"	12	12/24	Green	#10 RH	.12	5 ea
401468	401468-1	6"	3/4"	15/16"	12	12/24	Red	#10 RH	.12	5 ea

These LED Strip Lights feature 6 or 12 low amp LEDs per light. Circuit boards are epoxy potted for a waterproof seal. Constructed of corrosion resistant lightweight plastic. Installs with two #10 RH fasteners (included). 12/24VDC. IP67 waterproof rating.

⚠ WARNING: Cancer and Reproductive Harm - www.P65Warnings.ca.gov

**FLUSH MOUNT UTILITY LIGHT**

Injection Molded Polycarbonate



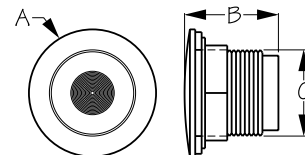
Bulk	Display	A	B	C	Wt.(lb.)	Std. Pack
401510	401510-1	2-3/8"	1-13/16"	1-5/8"	.09	10 ea / 5 ea
441906	441906-1	Replacement Bulb (Wedge Base - 9W)			.01 / .02	10 ea / 10 pr

This low profile Flush Mount Utility Light is ideal for livewell applications. Constructed of injection molded polycarbonate with a water resistant gasket and integral molded lens. Installs easily in a 1-5/8" hole and is secured from the back by a threaded mounting ring. 12" wire leads. 12VDC.

⚠ WARNING: Cancer and Reproductive Harm - www.P65Warnings.ca.gov

**LED LIVEWELL LIGHT**

Injection Molded Polycarbonate



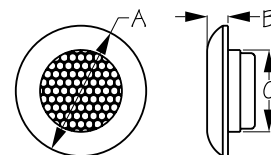
Bulk	Display	A	B	C	Color	Wt.(lb.)	Std. Pack
n/a	401525-1	1-1/2"	1-1/2"	7/8"	White	.05	5 ea
401525B	401525B-1	1-1/2"	1-1/2"	7/8"	Blue	.05	5 ea

These LED Livewell Lights are ideal for livewell applications. Constructed of injection molded polycarbonate with a water resistant gasket and integral molded lens. Easy to install it is secured from the back by a threaded mounting ring. Available with blue or white LEDs.

⚠ **WARNING:** Cancer and Reproductive Harm - www.P65Warnings.ca.gov

**LED COURTESY LIGHT**

Plastic



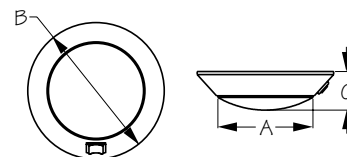
Bulk	Display	A	B	C	Ring Finish	Lumens	LED Color	Fastener	Wt.(lb.)	Std. Pack
401615	401615-1	3-1/8"	1/2"	2"	Chrome	3	Red	#6 FH	.10	1 ea / 5 ea
401617	401617-1	3-1/8"	1/2"	2"	White	3	Red	#6 FH	.10	1 ea / 5 ea
401625	401625-1	3-1/8"	1/2"	2"	Chrome	8	White	#6 FH	.10	1 ea / 5 ea
401627	401627-1	3-1/8"	1/2"	2"	White	8	White	#6 FH	.10	1 ea / 5 ea
401645	401645-1	3-1/8"	1/2"	2"	Chrome	3	Blue	#6 FH	.10	1 ea / 5 ea
401647	401647-1	3-1/8"	1/2"	2"	White	3	Blue	#6 FH	.10	1 ea / 5 ea
401699C	n/a	Replacement Ring			Chrome				.01	1 ea
401699W	n/a	Replacement Ring			White				.01	1 ea

These LED Courtesy Lights feature 9 low amp LEDs per light. White LEDs produce 8 lumens of light, while blue and red LEDs produce 3 lumens. Constructed of corrosion resistant lightweight plastic with a white or chrome finish. Installs with three #6 FH fasteners (included). Recommended for interior use only. 12VDC.

⚠ **WARNING:** Cancer and Reproductive Harm - www.P65Warnings.ca.gov

**LED DOME LIGHT**

Plastic



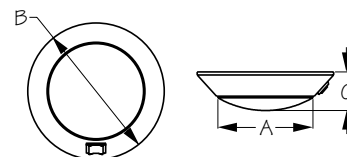
Bulk	Display	A	B	C	Finish	Fastener	Wt.(lb.)	Std. Pack
401725	401725-1	4"	5-3/4"	1-5/8"	Chrome	#8 RH	.25	1 ea / 5 ea
401727	401727-1	4"	5-3/4"	1-5/8"	White	#8 RH	.25	1 ea / 5 ea

These vibration resistant LED Dome Lights are prewired with integral on/off rocker switch. With the low current consumption of 0.068 amps @ 12 volts, they give off very little heat and have extremely long service life. Features 18 white LEDs per light. Constructed of corrosion resistant lightweight plastic with a white or chrome finish. Surface mounts with #8 RH fasteners (not included).

⚠ **WARNING:** Cancer and Reproductive Harm - www.P65Warnings.ca.gov

**LED DAY/NIGHT DOME LIGHT**

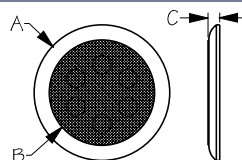
Plastic



Bulk	Display	A	B	C	Finish	Fastener	Wt.(lb.)	Std. Pack
401755	401755-1	4"	5-3/4"	1-5/8"	Chrome	#8 RH	.25	1 ea / 5 ea
401757	401757-1	4"	5-3/4"	1-5/8"	White	#8 RH	.25	1 ea / 5 ea

These vibration resistant LED Day/Night Dome Lights are prewired with integral on/off/on rocker switch and feature two separate light circuits. One circuit uses a clear bulb and the other circuit uses a red night vision bulb. With the low current consumption of 0.068 amps @ 12 volts, they give off very little heat and feature an extremely long service life. Features 15 white and 5 red LEDs per light. Constructed of corrosion resistant lightweight plastic with a white or chrome finish. Surface mounts with #8 RH fasteners (not included).

⚠ **WARNING:** Cancer and Reproductive Harm - www.P65Warnings.ca.gov

**LED LOW PROFILE TASK LIGHT W/O SWITCH**

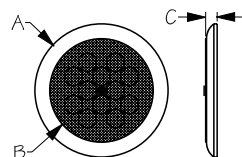
Polished 304 Stainless Steel



Bulk	Display	A	B	C	Ring Finish	Volts	LED Color	Fastener	Wt.(lb.)	Std. Pack
401665	401665-1	2-9/16"	1-3/8"	9/32"	Satin	12-24	White	#6 FH	.09	1 ea / 5 ea

This Low Profile Task Light features 6 warm white LEDs @ 0.2A (100 lumens). This light does not have an integral on/off switch. Constructed with a nickel plated 304 stainless steel bezel for style and corrosion resistance. Installs with two #6 FH fasteners (not included). 12-24VDC. IP67 waterproof rating.

⚠ WARNING: Cancer and Reproductive Harm - www.P65Warnings.ca.gov

**LED LOW PROFILE TASK LIGHT**

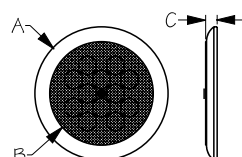
Polished 304 Stainless Steel



Bulk	Display	A	B	C	Ring Finish	Volts	LED Color	Fastener	Wt.(lb.)	Std. Pack
401666	401666-1	2-9/16"	1-3/8"	9/32"	Satin	12-24	White	#6 FH	.09	1 ea / 5 ea
401676	401676-1	3-3/8"	2-5/8"	9/32"	Satin	12-24	White	#6 FH	.12	1 ea / 5 ea

LED Low Profile Task Lights feature 6 LEDs @ 0.2A (100 lumens) or 12 LEDs @ 0.4A (200 lumens). Integral on/off switch activated by pressing the center of the lens. Constructed with a nickel plated 304 stainless steel bezel for style and corrosion resistance. Installs with two #6 FH fasteners (not included). 12-28VDC. IP65 rating.

⚠ WARNING: Cancer and Reproductive Harm - www.P65Warnings.ca.gov

**LED LOW PROFILE DAY/NIGHT TASK LIGHT**

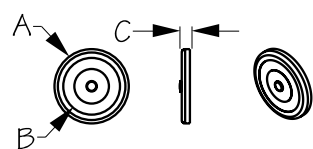
Polished 304 Stainless Steel



Bulk	Display	A	B	C	Ring Finish	Volts	LED Color	Fastener	Wt.(lb.)	Std. Pack
401679	401679-1	3-3/8"	2-5/8"	9/32"	Satin	12-24	White/Red	#6 FH	.12	1 ea / 5 ea

LED Low Profile Day/Night Task Light features 12 LEDs; 8 warm white @ 0.19A (143 lumens) and 4 red @ 0.06A (43 lumens) for night vision. Integral 3-way switch activates by pressing the center of the lens. Switch goes from on-night/off/on-day. Constructed with a nickel plated 304 stainless steel bezel for style and corrosion resistance. Installs with two #6 FH fasteners (not included). 12-28VDC. IP65 rating. CE compliant.

⚠ WARNING: Cancer and Reproductive Harm - www.P65Warnings.ca.gov

**LED LOW PROFILE TASK LIGHT WITH TOUCH ON/DIM/OFF SWITCH**

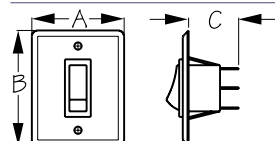
304 Stainless Steel



Bulk	Display	A	B	C	Ring Finish	Volts	LED Color	Fastener	Wt.(lb.)	Std. Pack
n/a	401686-1	2-3/4"	2-1/16"	5/16"	Polished	12-28	White	#6 FH	.08	5 ea

LED Low Profile Task Light with touch dimmer features 24 warm white LEDs @ 0.19A (145 lumens). Integral touch controlled on/dim/off operation, activated by pressing the center button. Memory function turns the light back on at the same brightness level as when it was turned off. Constructed of corrosion resistant, polished 304 stainless steel. Installs with two #6 FH fasteners (not included). 12-28VDC. IP65 rating. CE compliant.

⚠ WARNING: Cancer and Reproductive Harm - www.P65Warnings.ca.gov

**WALL SWITCH PANEL**

Stamped 304 Stainless Steel



Bulk	Display	A	B	C	No. of Switches	Finish	Fastener	Wt.(lb.)	Std. Pack
403010	403010-1	2"	2-1/2"	1"	1	Stainless	#6 RH	.08	1 ea / 5 ea
403020	403020-1	2"	2-1/2"	1"	2	Stainless	#6 RH	.08	1 ea / 5 ea

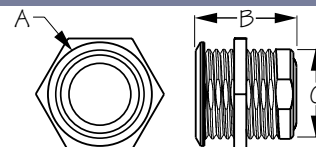
Wall Switch Panels feature one or two black SPDT switches rated @ 15 amps each. Constructed of corrosion resistant stamped 304 stainless steel. Installs with two #6 RH fasteners (not included).

⚠ WARNING: Cancer and Reproductive Harm - www.P65Warnings.ca.gov



LED CONTINUOUS ADJUSTMENT DIMMER SWITCH

304 Stainless Steel



Bulk	Display	A	B	C	Max Amps	Volts	Wt.(lb.)	Std. Pack
403060	403060-1	7/8"	7/8"	3/4"	1.5	12/24	.25	10 ea

LED Continuous Adjustment Dimmer Switch features easy-to-identify color-coded dimming levels. When off, the LED ring is orange; maximum bright, the ring is green; lowest light level, the ring is purple; and in between stages are shades of blue. A short press turns the light on and off, then a longer press activates the dimming/brightening function. Memory function turns the light back on at the same brightness level as when it was turned off. Constructed of corrosion resistant 304 stainless steel. 1.5A max. 12/24VDC. IP67 waterproof rating.

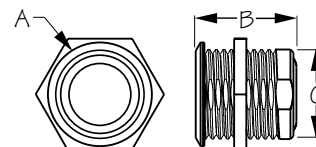


⚠ **WARNING:** Cancer and Reproductive Harm - www.P65Warnings.ca.gov



LED CONTINUOUS ADJUSTMENT DIMMER W/O ON/OFF FUNCTION

304 Stainless Steel



Bulk	Display	A	B	C	Max Amps	Volts	Wt.(lb.)	Std. Pack
403061	403061-1	7/8"	7/8"	3/4"	1.5	12/24	.25	10 ea / 1 ea

This LED Continuous Adjustment Dimmer Without On/Off Function is designed to work with lights that are internally switched. Ideal for Aurora Pop-Up Light (404610-3). A center touch sensor activates the color-coded dimming levels. When powered, the LED ring is dark blue; when adjusting towards maximum brightness, the ring becomes lighter blue; when adjusting towards minimum brightness, the ring becomes darker blue. Memory function turns the light back on at the same brightness level as when it was turned off. Constructed of corrosion resistant 304 stainless steel. 1.5A max. 12/24VDC. IP67 waterproof rating.

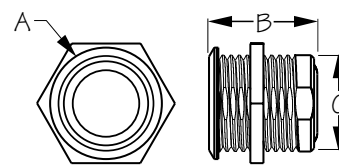


⚠ **WARNING:** Cancer and Reproductive Harm - www.P65Warnings.ca.gov



LED PUSH BUTTON ON/OFF SWITCH

Formed 304 Stainless Steel



Bulk	Display	A	B	C	Max Amps	Volts	Wt.(lb.)	Std. Pack
403063	403063-1	7/8"	7/8"	3/4"	5	10-24	.25	5 ea / 4 ea

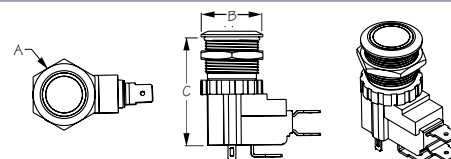
LED Push Button On/Off Switch is prewired for easy installation. Typically wired so LED ring lights up blue when pushing the center button, energizing the circuit. Constructed of corrosion resistant 304 stainless steel. 4A max. 10-24VDC. IP65 rating.

⚠ **WARNING:** Cancer and Reproductive Harm - www.P65Warnings.ca.gov



LED PUSH BUTTON ON/OFF SWITCH/HIGH AMP

Formed 304 Stainless Steel

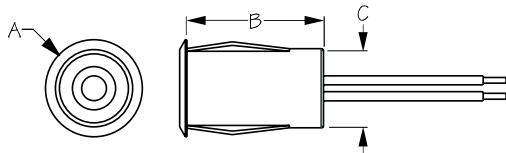


Bulk	Display	A	B	C	Max Amps	Volts	Wt.(lb.)	Std. Pack
403064	403064-1	7/8"	3/4"	1-9/16"	25	10-24	.05	5 ea / 4 ea

This High Amp LED Push Button On/Off Switch lights up blue when pushing the center button, energizing the circuit. Installs easily. Wired with three spade terminals. Constructed of corrosion resistant formed 304 stainless steel. 25A max. 10-24VDC. IP65 rating.

⚠ **WARNING:** Cancer and Reproductive Harm - www.P65Warnings.ca.gov



**MOTION SENSOR SWITCH**

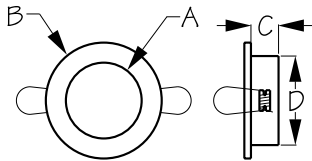
ABS
WATERPROOF
IP 67



Bulk	Display	A	B	C	Max Amps	Volts	Wt.(lb.)	Std. Pack
403066	403066-1	1-1/16"	1-9/16"	7/8"	2	12-30	.25	5 ea

Motion Sensor Switch can be used to activate LED and incandescent lights. The motion detection range is up to 15 feet, with an activation angle of 120°. Activation time is adjustable (10/20/50/70 seconds); factory preset 70 seconds. 2A max. 12-30VDC. IP67 waterproof rating.

⚠ WARNING: Cancer and Reproductive Harm - www.P65Warnings.ca.gov

**LED OVERHEAD LIGHT**

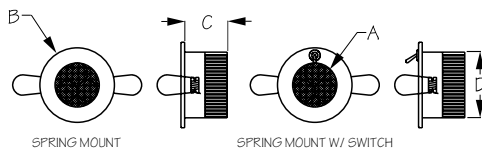
Stamped 304 Stainless Steel



Bulk	Display	A	B	C	D	Mount Style	Lens Color	Finish	Wt.(lb.)	Std. Pack
n/a	404230-3	1-1/2"	2-9/16"	5/8"	1-13/16"	Spring	Clear	Stainless	.12	5 ea
n/a	404232-3	1-1/2"	2-9/16"	5/8"	1-13/16"	Spring	Frosted	Stainless	.12	5 ea
n/a	404330-3	2"	3-3/16"	3/4"	2-7/16"	Spring	Clear	Stainless	.19	5 ea
n/a	404332-3	2"	3-3/16"	3/4"	2-7/16"	Spring	Frosted	Stainless	.19	5 ea
442944	442944-1	Replacement Bulb (LED G4 Base)							.01	5 ea

LED Overhead Lights feature excellent light dispersion and brightness, making them ideal for all accent lighting in cabins, walkways, cockpits, and interior compartments. Spring mounted they are recessed to provide a sleek appearance. G4 LED bulb features 14 white LEDs producing 60 lumens. Constructed of corrosion resistant 304 stainless steel with a brushed finish to compliment any interior. Available in two sizes with a clear or frosted lens. 60 mA, 0.7W @ 12.8VDC.

⚠ WARNING: Cancer and Reproductive Harm - www.P65Warnings.ca.gov

**DELUXE HIGH POWER LED OVERHEAD LIGHT**

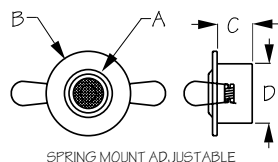
Stamped 304 Stainless Steel



Bulk	Display	A	B	C	D	Switch	Volts	Lux	Wt.(lb.)	Std. Pack
n/a	404510-1	1-5/8"	2-3/4"	1-9/16"	2-7/16"	No	12-28	250	.30	5 ea
n/a	404511-1	1-5/8"	2-3/4"	1-9/16"	2-7/16"	Yes	12-28	250	.31	5 ea

The Deluxe High Power LED Overhead Light features excellent light dispersion and brightness, making it ideal for all accent lighting in cabins, walkways, cockpits, and interior compartments. Spring mounted to fit in a 2-7/16" hole. Constructed of corrosion resistant stamped 304 stainless steel. Available in switched or non-switched versions. 250 lux. 12-28VDC.

⚠ WARNING: Cancer and Reproductive Harm - www.P65Warnings.ca.gov

**DELUXE HIGH POWER LED OVERHEAD LIGHT - ADJUSTABLE ANGLE**

Stamped 304 Stainless Steel



Bulk	Display	A	B	C	D	Volts	Lux	Wt.(lb.)	Std. Pack
n/a	404520-1	1-7/16"	2-5/8"	1-1/16"	1-13/16"	12-28	180	.23	5 ea

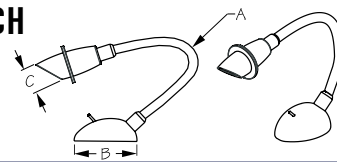
The Deluxe High Power LED Overhead Light features excellent light dispersion and brightness, making it ideal for all accent lighting in cabins, walkways, cockpits, and interior compartments. This light features an adjustable angle to direct light where needed. Spring mounted to fit in a 1-13/16" hole. Constructed of corrosion resistant stamped 304 stainless steel. 180 lux. 12-28VDC.

⚠ WARNING: Cancer and Reproductive Harm - www.P65Warnings.ca.gov



DELUXE HIGH POWER LED READING LIGHT - FLEXIBLE W/ SWITCH

Cast 316 Stainless Steel/Chromed Cast Aluminum



Bulk	Display	A	B	C	Volts	Lux	Wt.(lb.)	Std. Pack
n/a	404541-1	12-3/4"	2-5/8"	1"	12-28	150	.84	5 ea

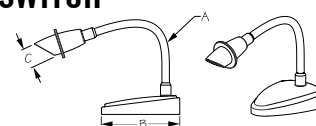
The Flexible Deluxe High Power LED Reading Light features an integral toggle switch. 12-3/4" flexible chrome cast aluminum neck easily adjusts to direct light where needed. Bright 3W LED bulb produces 150 lux light output. Constructed of corrosion resistant investment cast 316 stainless steel. 12-28VDC.

⚠ WARNING: Cancer and Reproductive Harm - www.P65Warnings.ca.gov



DELUXE HIGH POWER LED READING LIGHT - FLEXIBLE W/ TOUCH SWITCH

Cast 316 Stainless Steel/Chromed Cast Aluminum



Bulk	Display	A	B	C	Volts	Lux	Wt.(lb.)	Std. Pack
n/a	404546-1	12-3/4"	4-1/4"	1"	12-28	150	1.29	5 ea

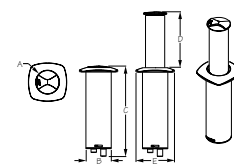
This deluxe high-power LED reading light features an integral touch switch. Touch any metal surface to turn the lamp on or off. 12-3/4" flexible chromed cast aluminum neck easily adjusts to direct light where needed. Bright 3W LED bulb produces 150 lux light output. Constructed of corrosion resistant investment cast 316 stainless steel. 12-28VDC.

⚠ WARNING: Cancer and Reproductive Harm - www.P65Warnings.ca.gov



AURORA LED POP-UP TABLE LIGHT

Investment Cast 316 Stainless Steel/ABS

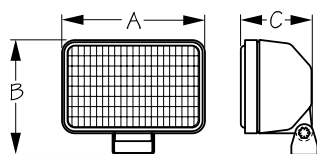


Bulk	Display	A	B	C	D	E	Lumens	Volts	Wt.(lb.)	Std. Pack
n/a	404610-3	2-3/8"	2-5/8"	9-7/8"	5-1/2"	3-15/16"	500	12-24	.65	1 ea
403061	403061-1	LED Continuous Adjustment Dimmer without On/Off function							.25	10 ea / 1 ea

Aurora LED Pop-Up Table Light automatically switches on with a simple twist of the cap, allowing the light to pop-up, ready to use. Push the cap down, twist to lock, and the light switches off and disappears into the table or deck. Can be used with LED Touch Dimmer Switch (403061-1). Constructed of corrosion resistant investment cast 316 stainless steel cap and bezel. Installs with #10 FH fasteners (included). Produces 500 lumens. 12-24V. IP67 waterproof rating.



⚠ WARNING: Cancer and Reproductive Harm - www.P65Warnings.ca.gov

**HALOGEN FLOOD LIGHT**

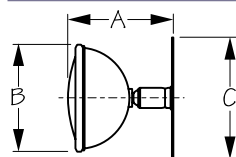
Injection Molded Fiberglass Nylon w/ Stamped 304 Stainless Steel Bracket



Bulk	Display	A	B	C	Amps	Volts	Watts	Wt.(lb.)	Std. Pack
n/a	405110-1	6-15/16"	5-5/16"	3-3/16"	4.58	12	55	1.45	1 ea
n/a	405115-1	5-7/8"	4-1/16"	3-3/16"	4.58	12	55	1.08	1 ea
n/a	405120-1	6-15/16"	5-5/16"	3-3/16"	2.91	24	70	1.42	1 ea
n/a	405111-1	Replacement Bulb (12V 55W Halogen - H3 style)						.02	5 ea
n/a	405121-1	Replacement Bulb (24V 70W Halogen - H3 style)						.02	5 ea

This marine grade Halogen Flood Light features H3 style 12V 55W halogen bulb, or 24V 70W halogen bulb. Constructed of fiberglass reinforced injection molded housing for strength and UV resistance, a solid glass lens, and a corrosion resistant stamped 304 stainless steel mounting bracket.

⚠ **WARNING:** Cancer and Reproductive Harm - www.P65Warnings.ca.gov

**ADJUSTABLE SPREADER LIGHT**

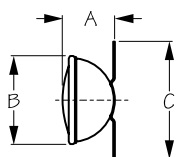
Stamped 304 Stainless Steel



Bulk	Display	A	B	C	Candle Power	Fastener	Wt.(lb.)	Std. Pack
n/a	405210-3	4-1/2"	4-5/8"	5-1/4"	3000	#10 RH	1.12	1 ea
OP40040	n/a	Replacement Retaining Ring					.05	1 ea
405411	n/a	Replacement Bulb (GE4411)					.59	1 ea

The Adjustable Spreader Light is prewired with two 12V wire leads. Light dome is set on a swiveling base for full maneuverability. Bright 35W sealed beam bulb. 3,000 candlepower. Constructed with a corrosion resistant stamped 304 stainless steel housing. Installs with four #10 RH fasteners (not included).

⚠ **WARNING:** Cancer and Reproductive Harm - www.P65Warnings.ca.gov

**FIXED SPREADER LIGHT**

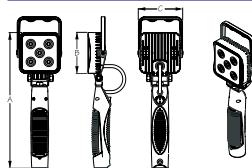
Stamped 304 Stainless Steel



Bulk	Display	A	B	C	Candle Power	Fastener	Wt.(lb.)	Std. Pack
n/a	405220-3	2-3/4"	4-5/8"	6"	3000	#10 RH	.94	1 ea
OP40040	n/a	Replacement Retaining Ring					.05	1 ea
405411	n/a	Replacement Bulb (GE4411)					.59	1 ea

The Fixed Spreader Light is prewired with two 12V wire leads. The light dome is set directly on the stainless bracket for a more compact profile. Bright 35W sealed beam bulb. 3,000 candlepower. Constructed with a corrosion resistant stamped 304 stainless steel housing. Installs with two #10 RH fasteners (not included).

⚠ **WARNING:** Cancer and Reproductive Harm - www.P65Warnings.ca.gov

**LED RECHARGEABLE HANDHELD FLOOD LIGHT**

Powder Coated Aluminum/Stamped 304 Stainless Steel Bracket/ABS



Bulk	Display	A	B	C	LEDs	Lumens	Wt.(lb.)	Std. Pack
n/a	405300-3	11"	3-1/4"	3-1/2"	5	1200	.67	1 ea

This marine grade LED Rechargeable Handheld Flood Light features five 3W high intensity Bridgelux LEDs which produce 1200 lumens. Fully adjustable, the handle allows the light to be hung or propped at many different angles to illuminate the task at hand. Includes both a 12VDC and 120VAC charge adapter. Constructed of a black powder coated aluminum housing with a stamped 304 stainless steel bracket and polycarbonate lens. 7.4V 2200MAH rechargeable Li-battery. Run time 3-4 hours. Charging time 3-4 hours. IP65 rating. CE, RoHS compliant.

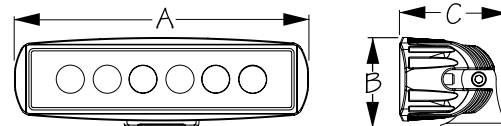


⚠ **WARNING:** Cancer and Reproductive Harm - www.P65Warnings.ca.gov



LED COCKPIT SPREADER LIGHT

Powder Coated Aluminum/Stamped 304 Stainless Steel Bracket



Bulk	Display	A	B	C	LEDs	Amps	Volts	Color	Wt.(lb.)	Std. Pack
n/a	405320-3	6-1/4"	1-7/8"	2-1/4"	6	1	12/24	Black	.67	1 ea
n/a	405321-3	6-1/4"	1-7/8"	2-1/4"	6	1	12/24	White	.67	1 ea

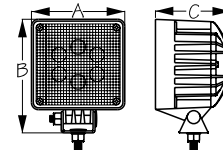
These marine grade LED Cockpit Spreader Lights feature six 3W high intensity Epistar LEDs that produce 1440 lumens. The wide beam polycarbonate lens provides ample illumination for sail trim or deck work. Constructed of a powder coated die cast aluminum housing with a stamped 304 stainless steel mounting bracket. Available in black or white. Low amp draw. 1A @ 12VDC. IP68 waterproof rating. CE, RoHS compliant.

⚠ **WARNING:** Cancer and Reproductive Harm - www.P65Warnings.ca.gov



LED SQUARE FLOOD LIGHT

Powder Coated Aluminum/Stamped 304 Stainless Steel Bracket



Bulk	Display	A	B	C	LEDs	Amps	Volts	Lumens	Wt.(lb.)	Std. Pack
n/a	405330-3	4"	5"	3-1/2"	6	2	12/24	1000	1.60	1 ea

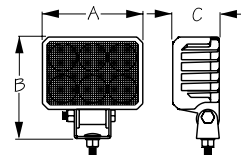
This marine grade LED Square Flood Light features 6 super bright LEDs that produce 1000 lumens. Constructed of white powder coated aluminum housing with a corrosion resistant stamped 304 stainless steel mounting bracket. Low amp draw. 12/24V. IP68 waterproof rating. 5-year warranty.

⚠ **WARNING:** Cancer and Reproductive Harm - www.P65Warnings.ca.gov



LED RECTANGULAR FLOOD LIGHT

Powder Coated Aluminum/Stamped 304 Stainless Steel Bracket



Bulk	Display	A	B	C	LEDs	Amps	Volts	Lumens	Wt.(lb.)	Std. Pack
n/a	405335-3	4-5/16"	4-1/8"	2"	6	1.4	9-36	1500	.99	1 ea

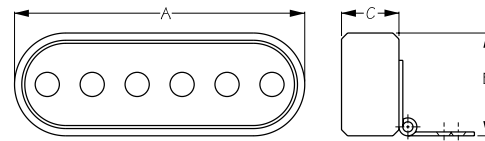
This marine grade LED Flood Light features 6 super bright LEDs that produce 1500 lumens. Constructed of powder coated aluminum housing with a corrosion resistant stamped 304 stainless steel bracket. Low amp draw. 9-36V. IP67 waterproof rating.

⚠ **WARNING:** Cancer and Reproductive Harm - www.P65Warnings.ca.gov



LED COMPACT FLOOD & SPREADER LIGHT

Aluminum/304 Stainless Steel

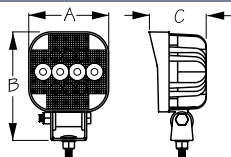


Bulk	Display	A	B	C	LEDs	Amps	Volts	Lumens	Wt.(lb.)	Std. Pack
n/a	405350-3	6"	2-1/8"	1-3/16"	6	1.25	10-30	1400	.77	1 ea

The LED Compact Flood & Spreader Light features 6 bright 3W LEDs that produce 1400 lumens at a 60° angle flood. Constructed of a machined anodized solid aluminum body with a stainless steel mounting bracket to provide a sleek look and durability. Low amp draw of 1.25A @ 12VDC. 15W total. 10-30VDC.



⚠ **WARNING:** Cancer and Reproductive Harm - www.P65Warnings.ca.gov

**LED SQUARE SPOT/FLOOD LIGHT**

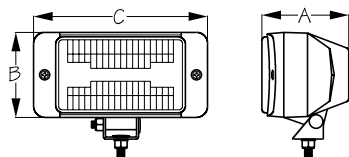
Powder Coated Aluminum/Stamped 304 Stainless Steel Bracket



Bulk	Display	A	B	C	LEDs	Amps	Volts	Lumens	Wt.(lb.)	Std. Pack
n/a	405340-3	3-1/2"	4-3/4"	2-3/4"	10	1	9-36	1300	1.14	1 ea

This marine grade LED Square Spot/Flood Light features 10 super bright LEDs (4 Spot / 6 Flood) that produce 1300 lumens. Constructed of a powder coated aluminum housing with a corrosion resistant stamped 304 stainless steel bracket. 9-36V. IP67 waterproof rating.

⚠ WARNING: Cancer and Reproductive Harm - www.P65Warnings.ca.gov

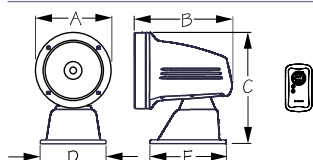
**DOCKING LIGHT**

Injection Molded Fiberglass Nylon w/ Stamped 304 Stainless Steel Bracket

Bulk	Display	A	B	C	Amps	Volts	Watts	Wt.(lb.)	Std. Pack
405510	n/a	2-7/8"	2-11/16"	5-11/16"	4.58	12	55	.67	1 ea
n/a	405111-1	Replacement Bulb (12V 55W Halogen - H3 style)						.02	5 ea

This Docking Light features a H3 style 12V 55W halogen bulb. Constructed of a fiberglass reinforced injection molded nylon housing for strength and UV resistance with a corrosion resistant stamped 304 stainless steel bracket.

⚠ WARNING: Cancer and Reproductive Harm - www.P65Warnings.ca.gov

**ASA HALOGEN SPOT/FLOOD LIGHT**

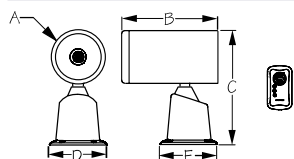
ASA Plastic



Bulk	Display	A	B	C	D	E	Spot Watts	Flood Watts	Wt.(lb.)	Std. Pack
n/a	405610-3	6-11/16"	8-3/16"	9-5/8"	5-3/4"	6-5/8"	100	90	2.00	1 ea
405969	n/a	Replacement Bulb (H4 style)							.06	5 ea
n/a	405681-1	Battery Operated Wireless Remote Control for 405610-3							.35	1 ea
n/a	405691-1	12V Powered Wireless Control Station for 405610-3							.22	1 ea

ASA Halogen Spot/Flood Light features our control station remote (405691-1) as the primary controller, replacing the traditional joystick remote and RJ-11 phone cable connection. The 12V hardwired controller can be placed up to 100 ft (30 m) away from the light for wireless communication. Battery operated remote control (405681-1) sold separately. 352° horizontal rotation range and 50° vertical range, with jam protection. Spot light draws 8.3A and the flood light draws 7.5A @ 12V. Single speed motor draws 0.5A @ 12V. H4 halogen bulb produces 2500 lumens. IP67 waterproof rating. 5-year warranty.

⚠ WARNING: Cancer and Reproductive Harm - www.P65Warnings.ca.gov

**HALOGEN SPOT/FLOOD LIGHT**

Cast 316 Stainless Steel/Stamped 316 Stainless Steel



Bulk	Display	A	B	C	D	E	Spot Watts	Flood Watts	Wt.(lb.)	Std. Pack
n/a	405720-3	4-1/2"	8-1/4"	9-7/8"	4-3/4"	5-3/4"	100	90	4.00	1 ea
405969	n/a	Replacement Bulb (H4 style)							.06	5 ea
n/a	405682-1	Battery Operated Wireless Remote Control for 405720-3							.35	1 ea
n/a	405692-1	12V Powered Wireless Control Station for 405720-3							.22	1 ea

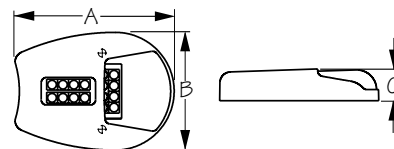
This Halogen Spot/Flood Light features our control station remote (405692-1) as the primary controller, replacing the traditional joystick remote and RJ-11 phone cable connection. The 12V hardwired controller can be placed up to 100 ft (30 m) away from the light for wireless communication. Battery operated remote control (405682-1) sold separately. Cast 316 stainless steel base with a stamped 316 stainless steel body and aluminum reflector for a classic, traditional look with a contemporary flair. Combination 100W/90W halogen bulb produces 165,000 CP spot/90,000 CP flood. 350° horizontal rotation range and 55° vertical range, with jam protection. Spotlight draws 8.3A and the floodlight draws 7.5A @ 12V. Two speed motor draws 0.5A @ 12V. H4 halogen bulb produces 2500 lumens. IP67 waterproof rating. 5-year warranty.

⚠ WARNING: Cancer and Reproductive Harm - www.P65Warnings.ca.gov



**LED DOCKING LIGHTS**

Stamped 304 Stainless Steel



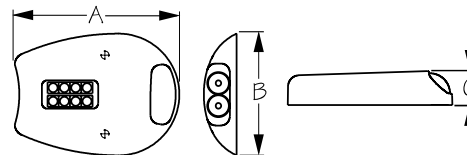
Bulk	Display	A	B	C	LEDs	Lumens	Amp Draw	Fastener	Wt.(lb.)	Std. Pack
405950	405950-1	3-9/16"	2-5/8"	3/4"	32	180	0.28@12V	#8 RH	.19	1 pr

LED Docking Lights feature a sleek, contemporary design. 32 super bright LEDs produce 180 lumens for excellent vision when docking. Constructed of corrosion resistant stamped 304 stainless steel. Surface mounted with two #8 RH fasteners (not included). Low amp draw of 0.28A @ 12VDC.

⚠ **WARNING:** Cancer and Reproductive Harm - www.P65Warnings.ca.gov

**LED (CREE) DOCKING LIGHTS**

Stamped 304 Stainless Steel



Bulk	Display	A	B	C	LEDs	Lumens	Amp Draw	Fastener	Wt.(lb.)	Std. Pack
405951	405951-1	3-9/16"	2-5/8"	3/4"	10	300	0.28@12V	#8 RH	.19	1 pr

These Docking Lights feature two high power Cree LEDs providing 1300 lux light output from the front array, with a focused beam angle of 10° for a concentrated light beam. Eight regular LEDs on the top array have a wide-angle beam of 90° to illuminate a large portion of the dock area. Front lights and top lights can be controlled separately. The lights small footprint makes for easy installation. Constructed of corrosion resistant stamped 304 stainless steel. Surface mounted with two #8 RH fasteners (not included). Low amp draw of 0.28 @ 12VDC produces 300 lumens. IP68 waterproof rating.

⚠ **WARNING:** Cancer and Reproductive Harm - www.P65Warnings.ca.gov

**LED INDICATOR LIGHTS**

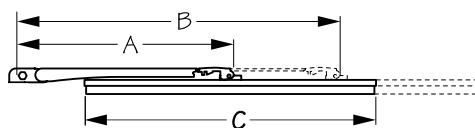
Bulk	Display	A	Volts	Color	Wt.(lb.)	Std. Pack
408111	n/a	3/16"	110 AC	Red	.01	5 ea
408112	n/a	3/16"	110 AC	Green	.01	5 ea
408121	n/a	3/16"	12 DC	Red	.01	5 ea
408122	n/a	3/16"	12 DC	Green	.01	5 ea

LED Indicator Lights can be panel mounted. Recommended wiring: DC voltage - gray wire is positive and black is negative. AC voltage - black wire is hot and gray is neutral.

⚠ **WARNING:** Cancer and Reproductive Harm - www.P65Warnings.ca.gov

**WINDSHIELD WIPER COMPONENTS**

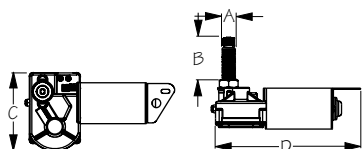
Stamped 304 Stainless Steel/Lexan Blades



Bulk	Display	Style	Description	Shaft Size	A	B	C	Wt.(lb.)	Std. Pack
411111	411111-1	Original Style (Hook)	Blade	n/a	n/a	n/a	11"	.07	10 ea
411114	411114-1	Original Style (Hook)	Blade	n/a	n/a	n/a	14"	.09	10 ea
410051	410051-1	New Style (Hinge)	Arm	3/8"	6-11/16"	10-13/16"	n/a	.13	10 ea
410054	410054-1	New Style (Hinge)	Arm	3/8"	9"	14-3/4"	n/a	.14	10 ea
411151	411151-1	New Style (Hinge)	Blade	n/a	n/a	n/a	11"	.07	10 ea
411154	411154-1	New Style (Hinge)	Blade	n/a	n/a	n/a	14"	.09	10 ea

All hook style wiper blades and arms are replacements for Sea-Dog® wipers sold prior to 1993. In addition, the hook style wiper blades and arms will fit most older wipers sold by AFI, Wilcox, NA Taylor, GEM, L.S. Brown, and others. All current Sea-Dog® wipers now come equipped with the new slip-on, hinge-style wiper blades and arms. Verify style prior to ordering. Wiper arms fit all standard and waterproof standard motors with 3/8" shaft diameter. Note: Blades do not fit 413 series arms.

⚠ **WARNING:** Cancer and Reproductive Harm - www.P65Warnings.ca.gov

**MRV WIPER MOTOR**

Stamped Powder Coated Steel/304 Stainless Steel

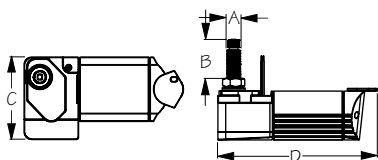


Bulk	Display	Finish	Sweep	(Shaft Dia.) A	(Shaft Len.) B	C	D	Volts/Amps	Wt.(lb.)	Std. Pack
n/a	412111B-3	Black	110°	5/8"	1-1/2"	4"	7-1/4"	12/2	2.65	1 ea
n/a	412111W-3	White	110°	5/8"	1-1/2"	4"	7-1/4"	12/2	2.65	1 ea
n/a	412118B-3	Black	80°	5/8"	1-1/2"	4"	7-1/4"	12/2	2.65	1 ea
n/a	412118W-3	White	80°	5/8"	1-1/2"	4"	7-1/4"	12/2	2.65	1 ea
n/a	412121B-3	Black	110°	5/8"	2-1/2"	4"	7-1/4"	12/2	2.65	1 ea
n/a	412121W-3	White	110°	5/8"	2-1/2"	4"	7-1/4"	12/2	2.65	1 ea
n/a	412128B-3	Black	80°	5/8"	2-1/2"	4"	7-1/4"	12/2	2.65	1 ea
n/a	412128W-3	White	80°	5/8"	2-1/2"	4"	7-1/4"	12/2	2.65	1 ea
n/a	412131B-3	Black	110°	5/8"	3-1/2"	4"	7-1/4"	12/2	2.65	1 ea
n/a	412131W-3	White	110°	5/8"	3-1/2"	4"	7-1/4"	12/2	2.65	1 ea
n/a	412138B-3	Black	80°	5/8"	3-1/2"	4"	7-1/4"	12/2	2.65	1 ea
n/a	412138W-3	White	80°	5/8"	3-1/2"	4"	7-1/4"	12/2	2.65	1 ea
n/a	412171B-3	Black	110°	5/8"	2-1/2"	4"	7-1/4"	24/1	2.65	1 ea
n/a	412178B-3	Black	80°	5/8"	2-1/2"	4"	7-1/4"	24/1	2.65	1 ea



MRV Wiper Motors are a two-speed, self-parking heavy duty motor for interior/protected locations. Sweep angle is preset at 80° or 110°, but can be reset to 40°, 50°, 60°, 70°, 80°, 90°, or 110°. Adjustable right or left-hand park, factory preset for left-hand park. Powers up to a 24" arm and blade configuration (36" total length). Constructed of powder coated steel and aluminum housing with stainless steel mounting bracket, brass, and stainless steel shaft with brass knurled fitting. Available in black or white, 12V or 24V (black only). CE compliant. 3-year warranty.

⚠ **WARNING:** Cancer and Reproductive Harm - www.P65Warnings.ca.gov

**WATERPROOF HEAVY DUTY WIPER MOTOR**

Powder Coated Aluminum/304 Stainless Steel



Bulk	Display	Finish	Sweep	(Shaft Dia.) A	(Shaft Len.) B	C	D	Volts/Amps	Wt.(lb.)	Std. Pack
n/a	412211B-3	Black	110°	5/8"	1-1/2"	4"	7-1/2"	12/2	3.20	1 ea
n/a	412211W-3	White	110°	5/8"	1-1/2"	4"	7-1/2"	12/2	3.20	1 ea
n/a	412218B-3	Black	80°	5/8"	1-1/2"	4"	7-1/2"	12/2	3.20	1 ea
n/a	412218W-3	White	80°	5/8"	1-1/2"	4"	7-1/2"	12/2	3.20	1 ea
n/a	412221B-3	Black	110°	5/8"	2-1/2"	4"	7-1/2"	12/2	3.20	1 ea
n/a	412221W-3	White	110°	5/8"	2-1/2"	4"	7-1/2"	12/2	3.20	1 ea
n/a	412228B-3	Black	80°	5/8"	2-1/2"	4"	7-1/2"	12/2	3.20	1 ea
n/a	412228W-3	White	80°	5/8"	2-1/2"	4"	7-1/2"	12/2	3.20	1 ea
n/a	412231B-3	Black	110°	5/8"	3-1/2"	4"	7-1/2"	12/2	3.20	1 ea
n/a	412231W-3	White	110°	5/8"	3-1/2"	4"	7-1/2"	12/2	3.20	1 ea
n/a	412238B-3	Black	80°	5/8"	3-1/2"	4"	7-1/2"	12/2	3.20	1 ea
n/a	412238W-3	White	80°	5/8"	3-1/2"	4"	7-1/2"	12/2	3.20	1 ea
n/a	412261W-3	White	110°	5/8"	1-1/2"	4"	7-1/2"	24/1	3.20	1 ea
n/a	412268W-3	White	80°	5/8"	1-1/2"	4"	7-1/2"	24/1	3.20	1 ea
n/a	412271W-3	White	110°	5/8"	2-1/2"	4"	7-1/2"	24/1	3.20	1 ea
n/a	412278W-3	White	80°	5/8"	2-1/2"	4"	7-1/2"	24/1	3.20	1 ea



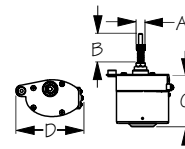
Waterproof Heavy Duty Wiper Motors are a two-speed, self-parking motor for exterior/unprotected locations. Sweep angle is preset at 80° or 110°, but can be reset to 40°, 50°, 60°, 70°, 80°, 90°, or 110°. Adjustable right or left-hand park, factory preset for left-hand park. Powers up to a 24" arm and blade configuration (36" total length). Constructed of powder coated aluminum housing with stainless steel mounting bracket, shaft, and knurled fitting. Available in black or white, 12V or 24V (white only). IP66 rating. CE compliant. 3-year warranty.

⚠ **WARNING:** Cancer and Reproductive Harm - www.P65Warnings.ca.gov



STANDARD WIPER MOTOR

Stamped Powder Coated Aluminum/304 Stainless Steel



Bulk	Display	Description	Sweep	(Shaft Dia.) A	(Shaft Len.) B	C	D	Volts/Amps	Wt.(lb.)	Std. Pack
n/a	412321B-3	Motor Only	110°	3/8	2-1/2"	3-1/4"	4"	12/2	1.14	1 ea
n/a	412328B-3	Motor Only	80°	3/8"	2-1/2"	3-1/4"	4"	12/2	1.14	1 ea

Standard Wiper Motor for interior/protected locations. Sweep angle is preset at 80° or 110°, but can be reset to 40°, 50°, 60°, 70°, 80°, 90°, or 110°. Adjustable right or left-hand park, factory preset for left-hand park. Powers up to a 14" arm/blade combination (21" total length) using standard wiper arms. Same footprint as competitive standard wiper motors. Constructed of corrosion resistant powder coated aluminum housing with stainless steel base plate, shaft, and knurled drive nut. Black only. CE compliant. 3-year warranty.

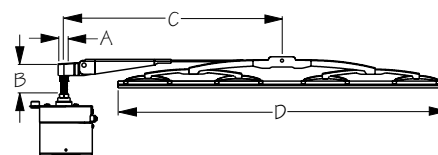


⚠ WARNING: Cancer and Reproductive Harm - www.P65Warnings.ca.gov



STANDARD WIPER MOTOR KIT

Stamped Powder Coated Aluminum 304 Stainless Steel



Bulk	Display	Description	Sweep	(Shaft Dia.) A	(Shaft Len.) B	(Arm) C	(Blade) D	Volts/Amps	Wt.(lb.)	Std. Pack
n/a	412421B-1	Kit	110°	3/8"	2-1/2"	9-1/2"-12-1/2"	11"	12/2	1.71	1 ea
n/a	412428B-1	Kit	80°	3/8"	2-1/2"	9-1/2"-12-1/2"	11"	12/2	1.71	1 ea

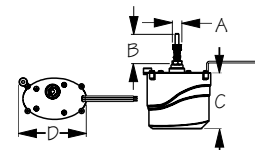
Standard Wiper Motor Kit includes a frame mount, wiper motor, adjustable standard wiper arm (9-1/2"-12-1/2"), and an 11" curved blade. Constructed of powder coated aluminum and 304 stainless steel. CE compliant. 3-year warranty.

⚠ WARNING: Cancer and Reproductive Harm - www.P65Warnings.ca.gov



WATERPROOF STANDARD WIPER MOTOR

Powder Coated Aluminum/304 Stainless Steel



Bulk	Display	Description	Sweep	(Shaft Dia.) A	(Shaft Len.) B	C	D	Volts/Amps	Wt.(lb.)	Std. Pack
n/a	412321W-3	Motor Only	110°	3/8"	2-1/2"	3-1/4"	4-3/8"	12/2	1.45	1 ea
n/a	412328W-3	Motor Only	80°	3/8"	2-1/2"	3-1/4"	4-3/8"	12/2	1.45	1 ea

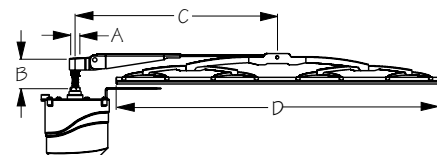
Waterproof Standard Wiper Motor for exterior/unprotected locations. Sweep angle is preset at 80° or 110°, but can be reset to 40°, 50°, 60°, 70°, 80°, 90°, or 110°. Adjustable right or left-hand park, factory preset for left-hand park. Powers up to a 14" arm and blade combination (21" total length) using standard wiper arms. Fits the same footprint as most competitive standard wiper motors. Constructed of corrosion resistant powder coated aluminum housing with stainless steel base plate, shaft, and knurled drive nut. White only. IP66 rating. CE compliant. 3-year warranty.

⚠ WARNING: Cancer and Reproductive Harm - www.P65Warnings.ca.gov



WATERPROOF STANDARD WIPER MOTOR KIT

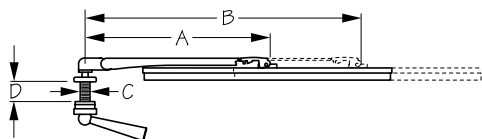
Powder Coated Aluminum/304 Stainless Steel



Bulk	Display	Description	Sweep	(Shaft Dia.) A	(Shaft Len.) B	(Arm) C	(Blade) D	Volts/Amps	Wt.(lb.)	Std. Pack
n/a	412421W-1	Kit	110°	3/8"	2-1/2"	9-1/2"-12-1/2"	11"	12/2	2.03	1 ea
n/a	412428W-1	Kit	80°	3/8"	2-1/2"	9-1/2"-12-1/2"	11"	12/2	2.03	1 ea

Waterproof Standard Wiper Motor Kit includes a waterproof frame mount, wiper motor, an adjustable wiper arm (9-1/2"-12-1/2"), and an 11" curved blade. Constructed of corrosion resistant powder coated aluminum housing with stainless steel base plate, shaft, and knurled drive nut. IP66 rating. CE compliant. 3-year warranty.

⚠ WARNING: Cancer and Reproductive Harm - www.P65Warnings.ca.gov

**MANUAL WINDSHIELD WIPER**

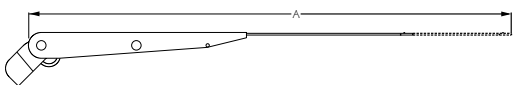
Machined Brass Chrome Plated/Stainless Steel



Bulk	Display	A	B	C	D	Wt.(lb.)	Std. Pack
412601	412601-1	8"	12"	7/16"	15/16"	.53	5 ea
410051	410051-1	Replacement Arm 6-11/16"-10-13/16"				.13	10 ea
410054	410054-1	Replacement Arm 9"-14-3/4"				.14	10 ea
411151	411151-1	Replacement Blade 11"				.07	10 ea
411154	411154-1	Replacement Blade 14"				.09	10 ea

Manual Windshield Wiper includes an 8"-12" adjustable wiper arm (410051) and 11" blade (411151). This hand operated wiper is an economical alternative to traditional wiper motors. Constructed of chrome plate machined brass and stainless steel.

⚠ WARNING: Cancer and Reproductive Harm - www.P65Warnings.ca.gov

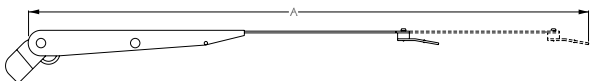
**PREMIUM WIPER ARM FOR STANDARD MOTORS**

Formed 304 Stainless Steel



Bulk	Display	A	Shaft Size	Finish	Wt.(lb.)	Std. Pack
n/a	413054B-1	9-1/2"-12-1/2"	3/8"	Black	.41	12 ea

Premium Wiper Arm for Standard Motors (412321B-3, 412328B-3) and Waterproof Standard Motors (412321W-3, 412328W-3) with 3/8" shaft diameter. Constructed of corrosion resistant formed 304 stainless steel.

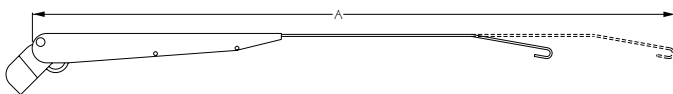
**ADJUSTABLE WIPER ARM**

Formed 304 Stainless Steel



Bulk	Display	A	Shaft Size	Finish	Wt.(lb.)	Std. Pack
n/a	413111B-1	8"-11-1/4"	5/8"	Black	.13	1 ea
n/a	413111S-1	8"-11-1/4"	5/8"	Silver	.13	1 ea
n/a	413114B-1	10-7/16"-13-3/16"	5/8"	Black	.14	1 ea
n/a	413114S-1	10-7/16"-13-3/16"	5/8"	Silver	.14	1 ea
n/a	413118B-1	12-3/4"-18-1/8"	5/8"	Black	.15	1 ea
n/a	413118S-1	12-3/4"-18-1/8"	5/8"	Silver	.15	1 ea
n/a	413120B-1	13-3/16"-19-1/2"	5/8"	Black	.16	1 ea
n/a	413120S-1	13-3/16"-19-1/2"	5/8"	Silver	.16	1 ea
n/a	413124B-1	17-15/16-24-1/4"	5/8"	Black	.17	1 ea
n/a	413124S-1	17-15/16-24-1/4"	5/8"	Silver	.17	1 ea

Adjustable Wiper Arm for use on MRV and heavy duty waterproof wiper motors with 5/8" shaft diameter. Compatible with 1.5" and 2.5" shaft lengths. Constructed of corrosion resistant formed 304 stainless steel.

**ADJUSTABLE WIPER ARM - HOOK STYLE**

Powder Coated 304 Stainless Steel



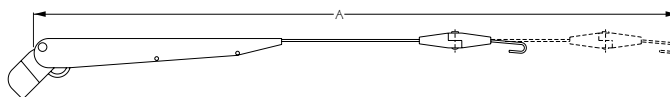
Bulk	Display	A	Shaft Size	Finish	Wt.(lb.)	Std. Pack
n/a	413168B-1	13"-18"	5/8"	Black	.57	10 ea
n/a	413174B-1	19"-24"	5/8"	Black	.65	10 ea

Adjustable J-Hook (automotive style) Wiper Arm fits all standard MRV and heavy duty waterproof wiper motors with 5/8" shaft diameter. Compatible with 1.5" and 2.5" shaft lengths. Constructed of powder coated 304 stainless steel.



ADJUSTABLE WIPER ARM - HOOK STYLE (ADJUSTABLE PIVOTING TIP)

Powder Coated 304 Stainless Steel



Bulk	Display	A	Shaft Size	Finish	Wt.(lb.)	Std. Pack
n/a	413268B-1	13"-18"	5/8"	Black	.58	10 ea
n/a	413274B-1	19"-24"	5/8"	Black	.66	10 ea

Adjustable J-Hook (automotive style) Wiper Arm with Adjustable Pivoting Tip fits all standard MRV and heavy duty waterproof wiper motors with 5/8" shaft diameter. Compatible with 1.5" and 2.5" shaft lengths. The innovative adjustable tip allows blades to be set at different angles to maximize wiper blade coverage area and to ensure park position parallel to window frame. Constructed of powder coated 304 stainless steel.



ADJUSTABLE PANTOGRAPHIC WIPER ARM

Formed 304 Stainless Steel



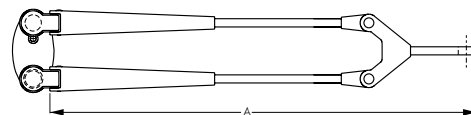
Bulk	Display	A	Shaft Size	Finish	Wt.(lb.)	Std. Pack
n/a	413317-1	12"-17"	5/8"	Black	.57	1 ea
n/a	413319-1	15"-19"	5/8"	Black	.65	1 ea
n/a	413322-1	17"-22"	5/8"	Black	.70	1 ea

Adjustable Pantographic Wiper Arm for use on standard MRV and heavy duty waterproof wiper motors with 5/8" shaft diameter. Compatible with 1.5" and 2.5" shaft lengths. Constructed of corrosion resistant formed 304 stainless steel.



ADJUSTABLE PANTOGRAPHIC WIPER ARM - HOOK STYLE

Powder Coated 304 Stainless Steel



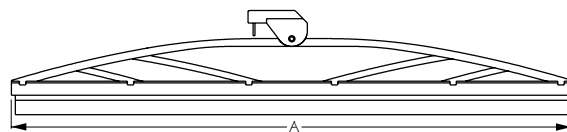
Bulk	Display	A	Shaft Size	Finish	Wt.(lb.)	Std. Pack
n/a	413368B-1	13"-18"	5/8"	Black	1.36	1 ea
n/a	413374B-1	19"-24"	5/8"	Black	1.42	1 ea

Adjustable J-Hook (automotive style) Pantograph Wiper Arm fits all standard MRV and heavy duty waterproof wiper motors with 5/8" shaft diameter. Compatible with 1.5" and 2.5" shaft lengths. Constructed of powder coated 304 stainless steel.



WIPER BLADE (HOOK STYLE ARM)

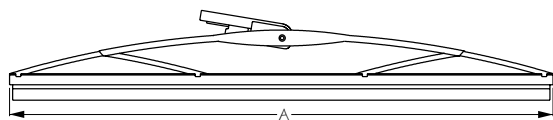
Injection Molded Nylon



Bulk	Display	A	Finish	Wt.(lb.)	Std. Pack
n/a	414112B-1	12"	Black	.08	1 ea
n/a	414114B-1	14"	Black	.09	1 ea
n/a	414116B-1	16"	Black	.10	1 ea
n/a	414118B-1	18"	Black	.11	1 ea
n/a	414120B-1	20"	Black	.12	1 ea
n/a	414122B-1	22"	Black	.13	1 ea
n/a	414124B-1	24"	Black	.14	1 ea

Hinge-style curved Wiper Blade with marine grade silicone rubber squeegee. For use on flat or curved windshields with a hook style arm. Constructed of UV resistant injection molded nylon.

⚠ WARNING: Cancer and Reproductive Harm - www.P65Warnings.ca.gov

**WIPER BLADE (STRAIGHT BLADE STYLE ARM)**

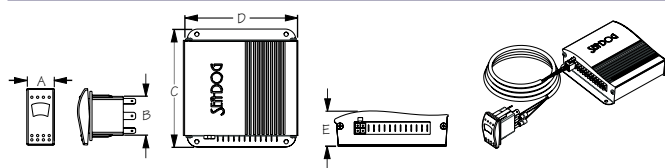
304 Stainless Steel



Bulk	Display	A	Finish	Wt.(lb.)	Std. Pack
414212B	414212B-1	11-1/2"	Black	.07	1 ea
n/a	414212S-1	11-1/2"	Silver	.07	1 ea
n/a	414214B-1	14"	Black	.09	1 ea
n/a	414214S-1	14"	Silver	.09	1 ea
n/a	414216B-1	16"	Black	.10	1 ea
n/a	414216S-1	16"	Silver	.10	1 ea
n/a	414218B-1	18"	Black	.11	1 ea
n/a	414218S-1	18"	Silver	.11	1 ea
n/a	414220B-1	20"	Black	.12	1 ea
n/a	414220S-1	20"	Silver	.12	1 ea
n/a	414222B-1	22"	Black	.13	1 ea
n/a	414222S-1	22"	Silver	.13	1 ea

Deluxe curved Wiper Blade with marine grade silicone rubber squeegee. For use on flat or curved windshields with a straight blade style arm. Constructed of corrosion resistant 304 stainless steel.

⚠ WARNING: Cancer and Reproductive Harm - www.P65Warnings.ca.gov

**SYNCHRONIZED WIPER CONTROL**

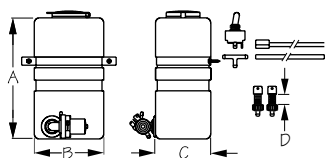
Powder Coated Aluminum/Stainless Steel



Bulk	Display	A	B	C	D	E	Volts	Fastener	Wt.(lb.)	Std. Pack
n/a	414800-3	13/16"	1-7/16"	4-7/16"	4-3/8"	1-5/16"	12	#8 RH	1.40	1 ea

Synchronized Wiper Control will sync up to three motors and adds an interval speed position to the traditional two-speed motor. One short push takes the motors from interval, to slow, to fast speed. One long push activates the primary motor only. Capable of operating a washer system like the Sea-Dog® Windshield Washer Kit (414900-3). Includes synchronized controller, switch, and 5' wiring harness. Overload protected. CE compliant.

⚠ WARNING: Cancer and Reproductive Harm - www.P65Warnings.ca.gov

**WINDSHIELD WASHER KIT**

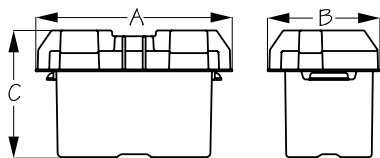
Plastic



Bulk	Display	A	B	C	D	Tank Capacity	Volts	Fastener	Wt.(lb.)	Std. Pack
n/a	414900-3	8-1/2"	4-7/8"	3-7/8"	7/8"	2.5 Liters (2.66 Quarts)	12	#10 RH	1.08	5 ea

This Windshield Washer Kit comes complete with everything needed for a new installation. Includes tank with pump, wiring harness for the pump motor connection, toggle switch, 15' of clear tubing, hose barb tee, two spray nozzles, and mounting bracket. Tank capacity is 2.5 liters (2.66 quarts). Installs with two #10 RH fasteners (included).

⚠ WARNING: Cancer and Reproductive Harm - www.P65Warnings.ca.gov

**BATTERY BOX**

Injection Molded Polypropylene



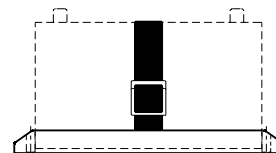
Bulk	Display	A	B	C	Battery Size	Wt.(lb.)	Std. Pack
415024	n/a	14"	9-5/8"	10-5/8"	24 series	2.10	1 ea
415027	n/a	16-7/8"	9-5/8"	10-7/8"	27 series	2.34	1 ea

Vented Battery Boxes include a woven polypropylene strap, screws, and brackets. Constructed of injection molded polypropylene.



BATTERY TRAY WITH STRAP

Injection Molded Polypropylene



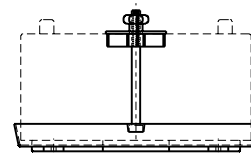
Bulk	Display	Battery Size	Inside Dimension	Fastener	Wt.(lb.)	Std. Pack
n/a	415044-1	24 Series	10-5/8" x 7"	1/4" PH	.67	1 ea
n/a	415047-1	27 Series	12-5/16" x 7"	1/4" PH	.74	1 ea

Heavy duty Battery Tray with Strap for size #24 and #27 batteries. Includes hold down strap with a quick release buckle and four 1/4"x1" PH screws with washers. Constructed of injection molded polypropylene.



BATTERY TRAY

Injection Molded Polypropylene



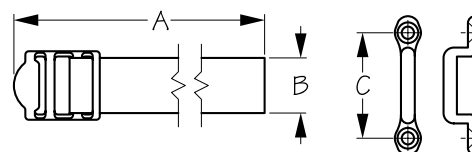
Bulk	Display	Battery Size	Inside Dimension	Fastener	Wt.(lb.)	Std. Pack
n/a	415054-1	24 Series	11" x 7"	1/4" RH	.63	1 ea
n/a	415057-1	27 Series	12-1/2" x 6-3/4"	1/4" RH	.67	1 ea

Heavy duty Battery Tray for size #24 and #27 batteries. Includes screw down clamp and four 1/4"x1" RH screws with washers. Constructed of injection molded polypropylene.



HEAVY DUTY BATTERY BOX STRAP

Woven Polypropylene/Stainless Steel/Chrome Plated Brass



Bulk	Display	A	B	C	Fastener	Wt.(lb.)	Std. Pack
415082	415082-1	4'	1"	2-3/16"	#8 FH	.15	10 ea

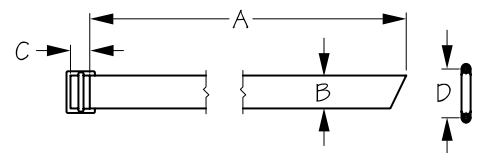
Heavy Duty Battery Box Strap includes a woven polypropylene strap, stainless steel buckle, two chrome plated brass brackets, and four #8 FH fasteners.

⚠ WARNING: Cancer and Reproductive Harm - www.P65Warnings.ca.gov



BATTERY BOX STRAP & BRACKETS

Woven Polypropylene/Injection Molded Nylon



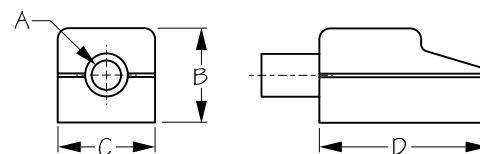
Bulk	Display	A	B	C	D	Fastener	Wt.(lb.)	Std. Pack
415092	415092-1	38"	1-9/16"	1"	2-5/16"	#8 FH	.07	10 ea
415094	415094-1	54"	1-9/16"	1"	2-5/16"	#8 FH	.09	10 ea

Battery Box Strap & Brackets includes a woven polypropylene strap, injection molded nylon buckle, two brackets, and four #8 FH fasteners.



BATTERY TERMINAL COVERS

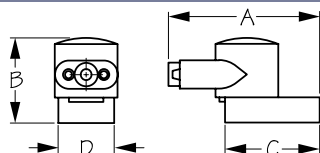
Injection Molded PVC



Bulk	Display	A	B	C	D	Cable Gauge	Colors	Wt.(lb.)	Std. Pack
n/a	415110-1	1/2"	1-5/8"	1-11/16"	2-7/8"	4, 2, 1	Red/Black	.30	5 pr
415111	n/a	1/2"	1-5/8"	1-11/16"	2-7/8"	4, 2, 1	Red	.15	10 ea
415112	n/a	1/2"	1-5/8"	1-11/16"	2-7/8"	4, 2, 1	Black	.15	10 ea
n/a	415115-1	5/8"	1-5/8"	1-11/16"	2-7/8"	1/0, 2/0	Red/Black	.30	5 pr
415116	n/a	5/8"	1-5/8"	1-11/16"	2-7/8"	1/0, 2/0	Red	.15	10 ea
415117	n/a	5/8"	1-5/8"	1-11/16"	2-7/8"	1/0, 2/0	Black	.15	10 ea

These Battery Terminal Covers are designed to insulate integral marine wing nut terminals protecting battery cables from corrosion and shorting. Constructed of injection molded PVC. These covers satisfy USCG and ABYC requirements for the prevention of accidental grounding of battery terminals. Color coded to avoid polarity misidentification. Will fit most marine batteries as well as automotive batteries using add-on marine terminals.

⚠ WARNING: Cancer and Reproductive Harm - www.P65Warnings.ca.gov



ROTATING BATTERY TERMINAL COVERS

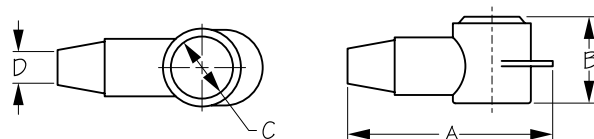
Injection Molded PVC



Bulk	Display	A	B	C	D	Cable Gauge	Colors	Wt.(lb.)	Std. Pack
n/a	415140-1	4-1/16"	2-3/8"	2-9/16"	1-1/2"	4, 2, 1	Red/Black	.20	10 pr

These battery terminal covers are designed to insulate integral marine wing nut terminals protecting battery cables from corrosion and shorting. This versatile 360° rotating top allows cable lead entry from any angle, simplifying wiring and avoiding kinking. Color coded to avoid polarity misidentification. Constructed of injection molded PVC. These covers satisfy USCG and ABYC requirements for the prevention of accidental grounding of battery terminals.

⚠ WARNING: Cancer and Reproductive Harm - www.P65Warnings.ca.gov



TERMINAL CAP

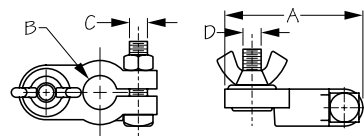
Injection Molded PVC



Bulk	Display	Cable Gauge	A	B	C	D	Wt.(lb.)	Std. Pack
415194	415194-1	8-2	2-3/16"	15/16"	11/16"	5/16"	.02 / .04	10 ea / 10 pr
415196	415196-1	2-2/0	3-1/16"	1-3/8"	1"	9/16"	.03	10 ea

These Terminal Caps are designed to insulate terminals protecting cables from corrosion and shorting. May be used on uninsulated, high amperage stud connections on chargers, inverters, starters, windlasses, solenoids, and other high amperage equipment. Constructed of injection molded PVC. These covers satisfy USCG and ABYC requirements for the prevention of accidental grounding of battery terminals.

⚠ WARNING: Cancer and Reproductive Harm - www.P65Warnings.ca.gov



BATTERY TERMINAL - WING NUT STYLE

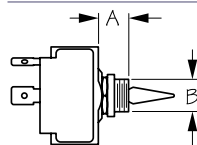
Die Cast Lead



Bulk	Display	Description	A	B	C	D	Wt.(lb.)	Std. Pack
n/a	415210-1	Positive/Negative Set	2-5/16"	9/16"	5/16"	3/8"/5/16"	.72	10 sets
415211	415211-1	Negative	2-5/16"	9/16"	5/16"	5/16"	.36	10 ea
415212	415212-1	Positive	2-5/16"	5/8"	5/16"	3/8"	.36	10 ea

Wing Nut Style Battery Terminals convert battery posts to stud connectors and permit quick disconnection from the battery. Polarity specific to meet USCG regulations. Constructed of die cast lead.

⚠ WARNING: Cancer and Reproductive Harm - www.P65Warnings.ca.gov



TOGGLE SWITCH

Stamped Brass/Injection Molded Nylon/Polycarbonate



Bulk	Display	Circuit	Action	Terminals	Amps	Volts	A	B	Wt.(lb.)	Std. Pack
420101	420101-1	SPST	On/Off	2 Blades	15	12	3/8"	1/2"	.04	10 ea
420102	420102-1	SPST	Mom. On/Off	2 Blades	15	12	3/8"	1/2"	.04	10 ea
420103	420103-1	DPDT	On/Off/On	6 Blades	15	12	3/8"	1/2"	.04	10 ea
420104	420104-1	DPDT	Mom. On/Off/Mom. On	6 Blades	15	12	3/8"	1/2"	.04	10 ea
420105	420105-1	SPDT	Mom. On/Off/On	3 Blades	15	12	3/8"	1/2"	.04	10 ea
420108	420108-1	SPDT	On/Off/On	3 Blades	15	12	3/8"	1/2"	.04	10 ea
420109	420109-1	SPDT	Mom. On/Off/Mom. On	3 Blades	15	12	3/8"	1/2"	.04	10 ea
420479	420479-1	Waterproof Cap Only							.01	10 ea
n/a	420101-5	Display POP-Toggle Switch (on/off)-20 pcs.							1.00	1 ea

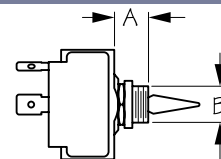
Water resistant Toggle Switches feature a locking ring with lever seal and a protruding cap nut. Easy to install for a variety of applications. Constructed of stamped brass, injection molded nylon, and polycarbonate. 15A @ 12VDC.

⚠ WARNING: Cancer and Reproductive Harm - www.P65Warnings.ca.gov



ILLUMINATING TOGGLE SWITCH

Stamped Brass/Injection Molded Nylon/Polycarbonate



Bulk	Display	Circuit	Action	Terminals	Amps	Volts	A	B	Wt.(lb.)	Std. Pack
420111	420111-1	SPST	On/Off	3 Blades	15	12	3/8"	1/2"	.04	10 ea
420113	420113-1	DPDT	On/Off/On	6 Blades	15	12	3/8"	1/2"	.04	10 ea
420118	420118-1	SPDT	On/Off/On	4 Blades	15	12	3/8"	1/2"	.04	10 ea

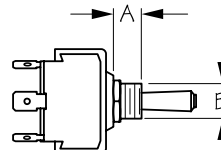
Illuminating Toggle Switches feature a locking ring and lever seal to resist water penetration. Illuminates red in the ON position. Fits panels up to 1/4" thick and requires a 15/32" mounting hole. 1/4" spade terminals make it easy to install. Constructed of stamped brass and injection molded nylon with a polycarbonate toggle. 15A @ 12VDC.

⚠ **WARNING:** Cancer and Reproductive Harm - www.P65Warnings.ca.gov



LIGHT TIP TOGGLE SWITCH

Stamped Brass/Injection Molded Nylon/Polycarbonate



Bulk	Display	Circuit	Action	Terminals	Amps	Volts	A	B	Wt.(lb.)	Std. Pack
420121	420121-1	SPST	On/Off	4 Blades	15	12	3/8"	1/2"	.04	10 ea
420122	420122-1	SPST	Mom. On/Off	4 Blades	15	12	3/8"	1/2"	.04	10 ea
420123	420123-1	SPDT	On/Off/On	5 Blades	15	12	3/8"	1/2"	.04	10 ea
420124	420124-1	SPDT	Mom. On/Off/Mom. On	5 Blades	15	12	3/8"	1/2"	.04	10 ea
420125	420125-1	SPDT	Mom. On/Off/On	5 Blades	15	12	3/8"	1/2"	.04	10 ea
420128	420128-1	DPDT	On/Off/On	8 Blades	15	12	3/8"	1/2"	.04	10 ea
420129	420129-1	DPDT	Mom. On/Off/Mom. On	8 Blades	15	12	3/8"	1/2"	.04	10 ea

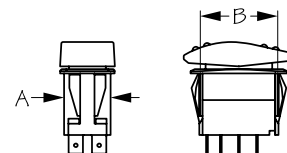
Light Tip Toggle Switches feature a locking ring and lever seal to resist water penetration. Toggle bat features a lighted tip which is white in the OFF position and red in the ON position. Fits panels up to 1/4" thick and requires a 15/32" mounting hole. Easy installation. Constructed of stamped brass and injection molded nylon with a polycarbonate toggle. 15A @ 12VDC.

⚠ **WARNING:** Cancer and Reproductive Harm - www.P65Warnings.ca.gov



CONTURA® ROCKER SWITCH

Stamped Brass/Injection Molded Nylon/Polycarbonate



Bulk	Display	Circuit	Action	Terminals	Amps	Volts	A	B	Wt.(lb.)	Std. Pack
420201	420201-1	SPST	On/Off	2 Blades	20	12	13/16"	1-7/16"	.05	10 ea
420202	420202-1	SPST	Mom. On/Off	2 Blades	20	12	13/16"	1-7/16"	.05	10 ea
420203	420203-1	SPDT	On/Off/On	3 Blades	20	12	13/16"	1-7/16"	.05	10 ea
420204	420204-1	SPDT	Mom. On/Off/Mom. On	3 Blades	20	12	13/16"	1-7/16"	.05	10 ea
420208	420208-1	DPDT	On/Off/On	6 Blades	20	12	13/16"	1-7/16"	.05	10 ea
420209	420209-1	DPDT	Mom. On/Off/Mom. On	6 Blades	20	12	13/16"	1-7/16"	.05	10 ea

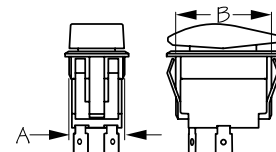
Contura® Rocker Switches are vibration, shock, thermoshock, moisture, and salt spray resistant. Temperature range from -40°C to +85°C. UL1500 / ISO8846 ignition protection for marine products. Constructed of injection molded nylon and stamped brass with silver tin oxide contacts. 20A @ 12VDC. IP66 rating (for front panel components only).

⚠ **WARNING:** Cancer and Reproductive Harm - www.P65Warnings.ca.gov



ILLUMINATING WAVE ROCKER HORN SWITCH

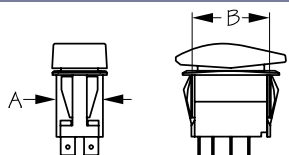
Stamped Brass/Injection Molded Nylon/Polycarbonate



Bulk	Display	Circuit	Action	Terminals	Amps	Volts	A	B	Wt.(lb.)	Std. Pack
420222H	420222H-1	SPST	Mom. On/Off	3 Blades	25	12	13/16"	1-7/16"	.05	10 ea

Illuminating Wave Rocker Horn Switches illuminate red in the ON position. Switch plate features a horn graphic for easy identification. Three terminal blades for easy installation. Constructed of stamped brass and injection molded nylon to resist water penetration. 25A @ 12VDC. Works great with Sea-Dog® Air Horns, (432510, 432520, 432610, and 432620).

⚠ **WARNING:** Cancer and Reproductive Harm - www.P65Warnings.ca.gov

**ILLUMINATING CONTURA® ROCKER SWITCH**

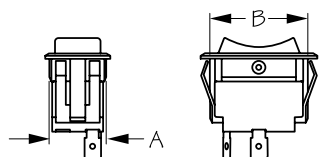
Stamped Brass/Injection Molded Nylon/Polycarbonate



Bulk	Display	Circuit	Action	Terminals	Amps	Volts	A	B	Wt.(lb.)	Std. Pack
420211	420211-1	SPST	On/Off	3 Blades	20	12	13/16"	1-7/16"	.05	10 ea
420212	420212-1	SPST	Mom. On/Off	3 Blades	20	12	13/16"	1-7/16"	.05	10 ea
420213	420213-1	SPDT	On/Off/On	4 Blades	20	12	13/16"	1-7/16"	.05	10 ea
420214	420214-1	SPDT	Mom. On/Off/Mom. On	4 Blades	20	12	13/16"	1-7/16"	.05	10 ea
420218	420218-1	DPDT	On/Off/On	7 Blades	20	12	13/16"	1-7/16"	.05	10 ea
420219	420219-1	DPDT	Mom. On/Off/Mom. On	7 Blades	20	12	13/16"	1-7/16"	.05	10 ea

Illuminated Contura® Rocker Switches are vibration, shock, thermoshock, moisture, and salt spray resistant. Temperature range from -40°C to +85°C. UL1500 / ISO8846 ignition protection for marine products. Switch displays a red light when in the on position. Constructed of injection molded nylon and stamped brass with silver tin oxide contacts. 20A @ 12VDC. IP66 rating (for front panel components only).

⚠ **WARNING:** Cancer and Reproductive Harm - www.P65Warnings.ca.gov

**LARGE ROCKER SWITCH**

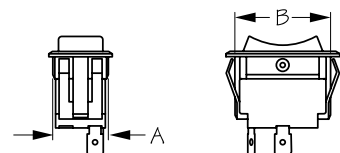
Stamped Brass/Injection Molded Nylon/Polycarbonate



Bulk	Display	Circuit	Action	Terminals	Amps	Volts	A	B	Wt.(lb.)	Std. Pack
420241	420241-1	SPST	On/Off	2 Blades	15	12	7/8"	1-7/16"	.04	10 ea
420243	420243-1	DPDT	On/Off/On	6 Blades	15	12	7/8"	1-7/16"	.04	10 ea
420248	420248-1	SPDT	On/Off/On	3 Blades	15	12	7/8"	1-7/16"	.04	10 ea
420249	420249-1	SPDT	Mom. On/Off/Mom. On	3 Blades	15	12	7/8"	1-7/16"	.04	10 ea

These Large Rocker Switches are easy to install by simply snapping into a standard 7/8" x 1-7/16" panel slot. Constructed of durable injection molded nylon and stamped brass with wiring for 1/4" blade terminals. 15A @ 12VDC.

⚠ **WARNING:** Cancer and Reproductive Harm - www.P65Warnings.ca.gov

**ILLUMINATING ROCKER SWITCH**

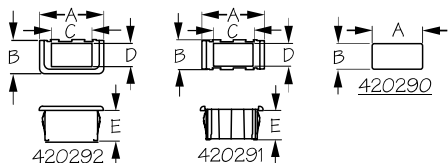
Stamped Brass/Injection Molded Nylon/Polycarbonate



Bulk	Display	Circuit	Action	Terminals	Amps	Volts	A	B	Wt.(lb.)	Std. Pack
420251	420251-1	SPST	On/Off	3 Blades	15	12	7/8"	1-7/16"	.04	10 ea
420253	420253-1	DPDT	On/Off/On	6 Blades	15	12	7/8"	1-7/16"	.04	10 ea
420258	420258-1	SPDT	On/Off/On	4 Blades	15	12	7/8"	1-7/16"	.04	10 ea

These Illuminating Rocker Switches illuminate in the ON position. Easy to install by simply snapping into a standard 7/8" x 1-7/16" panel slot. Constructed of durable injection molded nylon and stamped brass with wiring for 1/4" blade terminals. 15A @ 12VDC.

⚠ **WARNING:** Cancer and Reproductive Harm - www.P65Warnings.ca.gov

**ROCKER SWITCH MOUNTING BRACKET**

Injection Molded Nylon

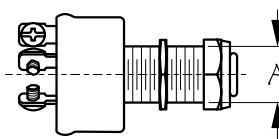


Bulk	Display	Description	A	B	C	D	E	Wt.(lb.)	Std. Pack
420290	420290-1	Cover	1-15/16"	15/16"	n/a	n/a	n/a	.01	10 ea
420291	420291-1	Center	2-5/16"	1-1/16"	1-7/16"	13/16"	1-1/16"	.02	10 ea
420292	420292-1	End	2-5/16"	1-1/4"	1-7/16"	13/16"	1-1/16"	.02	10 ea



THREE POSITION IGNITION SWITCH

Stamped Brass



Bulk	Display	Action	A	Max. Panel	Shaft Type	Terminals	Cap	Wt.(lb.)	Std. Pack
n/a	420350-1	Off-Ignition-Start	13/16"	1-1/8"	Long	3 Screws	No	.37	5 ea
n/a	420355-1	Off-Ignition-Start	13/16"	1-1/8"	Long	3 Screws	Yes	.38	5 ea
420399	n/a	Blank Replacement Key						.01	5 ea

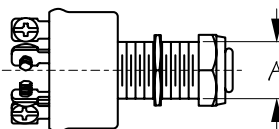
Three Position Ignition Switch for off, ignition, and start functions. 13/16" diameter long shaft. Maximum panel thickness: 1-1/8". Three screw terminal electrical connection. Ignition: 15A @ 12VDC. Solenoid: 30A @ 12VDC. Includes two keys. Constructed of stamped brass. Available with or without rubber boot.

⚠ WARNING: Cancer and Reproductive Harm - www.P65Warnings.ca.gov



THREE POSITION IGNITION SWITCH-MAGNETO STYLE

Stamped Brass



Bulk	Display	Action	A	Max. Panel	Shaft Type	Terminals	Cap	Wt.(lb.)	Std. Pack
n/a	420351-1	Off-Ignition-Start	13/16"	1-1/8"	Long	5 Screws	No	.39	5 ea
420399	n/a	Blank Replacement Key						.01	5 ea

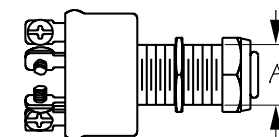
Three Position Magneto-Style Ignition Switch for off, ignition, and start functions. Ignition (accessory) circuit is not activated in the solenoid (start) position. 13/16" diameter long shaft for a maximum panel thickness: 1-1/8". Five screw terminal electrical connection. Ignition: 15A @ 12VDC. Solenoid: 30A @ 12VDC. Constructed of stamped brass. Includes two keys. OEM Note: Sea-Dog® ignitions are available upon request with customer logo on keys and keyed alike for large orders. Contact your Sea-Dog® representative for details.

⚠ WARNING: Cancer and Reproductive Harm - www.P65Warnings.ca.gov



FOUR POSITION IGNITION SWITCH

Stamped Brass



Bulk	Display	Action	A	Max. Panel	Shaft Type	Terminals	Cap	Wt.(lb.)	Std. Pack
n/a	420356-1	Acc.-Off-Ign.-Start	13/16"	1-1/8"	Long	4 Screws	No	.36	5 ea
420399	n/a	Blank Replacement Key						.01	5 ea

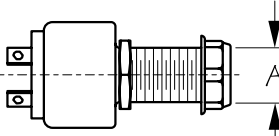
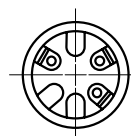
Four Position Ignition Switch for accessory, off, ignition, and start functions. 13/16" diameter long shaft. Maximum panel thickness: 1-1/8". Four screw terminal electrical connection. Ignition: 15A @ 12VDC. Solenoid: 30A @ 12VDC. Accessory: 15A @ 12VDC. Constructed of stamped brass. Includes two keys.

⚠ WARNING: Cancer and Reproductive Harm - www.P65Warnings.ca.gov



THREE POSITION IGNITION SWITCH

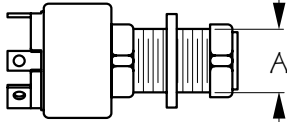
Polypropylene



Bulk	Display	Action	A	Max. Panel	Shaft Type	Terminals	Cap	Wt.(lb.)	Std. Pack
n/a	420360-1	Off-Ignition-Start	13/16"	1-1/8"	Long	3 Screws	No	.24	5 ea
n/a	420361-1	Off-Ignition-Start	13/16"	5/8"	Short	3 Screws	No	.24	5 ea
n/a	420365-1	Off-Ignition-Start	13/16"	1-1/8"	Long	3 Screws	Yes	.25	5 ea
n/a	420366-1	Off-Ignition-Start	13/16"	5/8"	Short	3 Screws	Yes	.25	5 ea
420398	420398-1	Replacement Cap						.01	10 ea
420399	n/a	Blank Replacement Key						.01	5 ea

Three Position Ignition Switch for off, ignition, and start functions. 13/16" diameter shaft is available in short shaft (maximum panel thickness: 5/8") or long shaft (maximum panel thickness: 1-1/8") versions. Three screw terminal electrical connection. Ignition: 15A @ 12VDC. Solenoid: 30A @ 12VDC. Constructed of polypropylene. Includes two keys. Available with or without rubber boot.

⚠ WARNING: Cancer and Reproductive Harm - www.P65Warnings.ca.gov

**THREE POSITION IGNITION SWITCH-MAGNETO STYLE**

Polypropylene



Bulk	Display	Action	A	Max. Panel	Shaft Type	Terminals	Cap	Wt.(lb.)	Std. Pack
420369	420369-1	Off-Ignition-Start	13/16"	1-1/8"	Long	6 Screws	No	.17	5 ea

Three Position Magneto-Style Ignition Switch for off, ignition, and start functions. 13/16" diameter long shaft. Maximum panel thickness: 1-1/8". Six screw terminal electrical connection. Ignition: 15A @ 12VDC. Solenoid: 30A @ 12VDC. Constructed of polypropylene. Includes two keys.

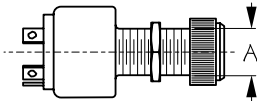
⚠ **WARNING:** Cancer and Reproductive Harm - www.P65Warnings.ca.gov



420375



420379

**FOUR POSITION IGNITION SWITCH**

Polypropylene



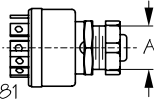
Bulk	Display	Action	A	Max. Panel	Shaft Type	Terminals	Cap	Wt.(lb.)	Std. Pack
n/a	420375-1	Acc.-Off-Ign.-Start	13/16"	1-1/8"	Long	4 Screws	Yes	.27	5 ea
420379	420379-1	Acc.-Off-Ign.-Start	13/16"	1-1/8"	Long	4 Blades	No	.20	5 ea
420398	420398-1	Replacement Cap						.01	10 ea
420399	n/a	Blank Replacement Key						.01	5 ea

Four Position Ignition Switch for accessory, off, ignition, and start functions. 13/16" diameter long shaft. Maximum panel thickness: 1-1/8". Four screw or four blade terminal electrical configurations. Ignition: 15A @ 12VDC. Solenoid: 30A @ 12VDC. Accessory: 15A @ 12VDC. Constructed of polypropylene. Includes two keys. Screw terminal version includes rubber boot.

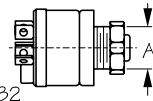
⚠ **WARNING:** Cancer and Reproductive Harm - www.P65Warnings.ca.gov



420381



420382

**THREE POSITION IGNITION SWITCH-MAGNETO STYLE**

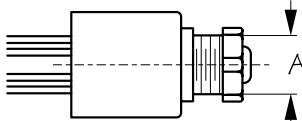
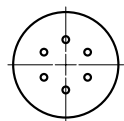
Polypropylene



Bulk	Display	Action	A	Max. Panel	Shaft Type	Terminals	Cap	Wt.(lb.)	Std. Pack
n/a	420381-1	Off-Ign.-Start-Choke	13/16"	5/8"	Short	6 Screws	No	.18	5 ea
n/a	420382-1	Off-Ign.-Start-Choke	13/16"	5/8"	Short	5 Screws-1 Boss	No	.18	5 ea
420399C	n/a	Blank Replacement Key						.01	5 ea

Three Position Magneto Style Ignition Switch for off, ignition, start, and choke functions. 13/16" diameter short shaft for a maximum panel thickness: 5/8". Six screw or five screw plus one boss terminal electrical connection. Ignition: 15A @ 12VDC. Solenoid: 30A @ 12VDC. Choke: 7A @ 12VDC. Constructed of polypropylene. Includes two keys. Push to choke.

⚠ **WARNING:** Cancer and Reproductive Harm - www.P65Warnings.ca.gov

**THREE POSITION IGNITION SWITCH-MAGNETO STYLE**

Polypropylene



Bulk	Display	Action	A	Max. Panel	Shaft Type	Terminals	Cap	Wt.(lb.)	Std. Pack
n/a	420383-1	Off-Ign.-Start-Choke	13/16"	5/8"	Short	6 Wires	No	.20	5 ea
420399C	n/a	Blank Replacement Key						.01	5 ea

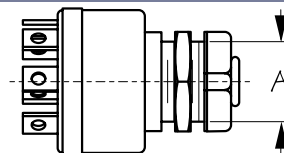
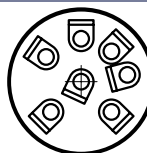
Three Position Magneto Style Ignition Switch for off, ignition, start, and choke functions. 13/16" diameter short shaft for a maximum panel thickness: 5/8". Six wire electrical connection. Ignition: 15A @ 12VDC. Solenoid: 30A @ 12VDC. Choke: 7A @ 12VDC. Constructed of polypropylene. Includes two keys. Push to choke.

⚠ **WARNING:** Cancer and Reproductive Harm - www.P65Warnings.ca.gov



FOUR POSITION IGNITION SWITCH-MAGNETO STYLE

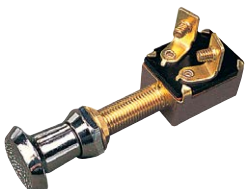
Polypropylene



Bulk	Display	Action	A	Max. Panel	Shaft Type	Terminals	Cap	Wt.(lb.)	Std. Pack
n/a	420385-1	Acc.-Off-Ign.-Start-Choke	13/16"	5/8"	Short	7 Screw	No	.18	5 ea
420386	420386-1	Acc.-Off-Ign.-Start-Choke	13/16"	5/8"	Short	6 Screws-1 Boss	No	.18	5 ea
420399C	n/a	Blank Replacement Key						.01	5 ea

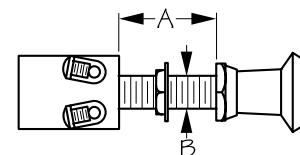
Four Position Magneto Style Ignition Switch for accessory, off, ignition, start, and choke functions. 13/16" diameter short shaft for a maximum panel thickness: 5/8". Seven screw or six screw plus one boss terminal electrical connection. Ignition: 15A @ 12VDC. Solenoid: 30A @ 12VDC. Choke: 7A @ 12VDC. Accessory: 15A @ 12VDC. Constructed of polypropylene. Includes two keys. Push to choke.

⚠ WARNING: Cancer and Reproductive Harm - www.P65Warnings.ca.gov



TWO POSITION ON-OFF PUSH-PULL SWITCH

Stamped Brass



Bulk	Display	A	B	Amps	Wt.(lb.)	Std. Pack
420390	420390-1	1"	3/8"	15	.12	10 ea
n/a	420390-5	Display POP-Push Pull Switch 2 Pos.-25 pcs.				3.25 1 ea

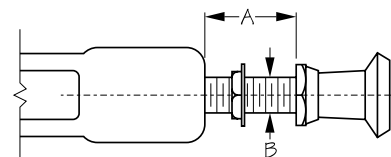
Two Position On-Off Push-Pull Switch features positive actuation with two positions On-Off (normally Off). Maximum panel thickness: 1". Constructed of stamped brass. 15A @ 12VDC.

⚠ WARNING: Cancer and Reproductive Harm - www.P65Warnings.ca.gov



SPLASH GUARD ON-OFF PUSH-PULL SWITCH

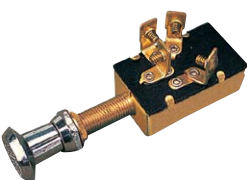
Stamped Brass



Bulk	Display	A	B	Amps	Wt.(lb.)	Std. Pack
420396	420396-1	15/16"	3/8"	15	.14	10 ea

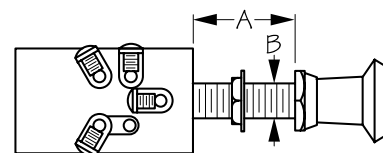
Splash Guard On-Off Push-Pull Switch features positive actuation with two positions On-Off (normally Off). Maximum panel thickness: 7/8". Constructed of stamped brass with PVC coating to protect terminals and switch from water (not designed for immersion). 15A @ 12VDC.

⚠ WARNING: Cancer and Reproductive Harm - www.P65Warnings.ca.gov



THREE POSITION TWO CIRCUIT PUSH-PULL SWITCH

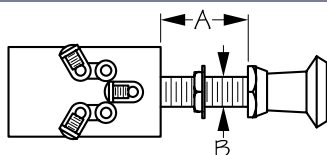
Stamped Brass



Bulk	Display	A	B	Amps	Wt.(lb.)	Std. Pack
420400	420400-1	1"	3/8"	15	.19	10 ea

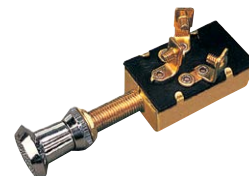
Three Position Two Circuit Push-Pull Switch features two circuits (normally Off) three position: Off/On/On. When pushed in all the way, the switch is turned off. When pulled to the first position, the first circuit is activated. At the second position, the first circuit is deactivated and the second circuit is activated. Maximum panel thickness: 1". Constructed of corrosion resistant stamped brass. 15A @ 12VDC.

⚠ WARNING: Cancer and Reproductive Harm - www.P65Warnings.ca.gov



THREE POSITION ONE CIRCUIT PUSH-PULL SWITCH

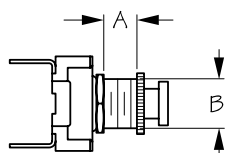
Stamped Brass



Bulk	Display	A	B	Amps	Wt.(lb.)	Std. Pack
420410	420410-1	1"	3/8"	15	.19	10 ea

Three Position One Circuit Push-Pull Switch features one circuit (normally Off) three position: Off/On/On. Pushed in all the way, the switch is off. Pulled to the first position, the first circuit is activated. At the second position both first and second circuit are activated. Ideal for cabin or running lights. Maximum panel thickness: 1". Constructed of corrosion resistant stamped brass. 15A @ 12VDC.

⚠ **WARNING:** Cancer and Reproductive Harm - www.P65Warnings.ca.gov



HORN BUTTON

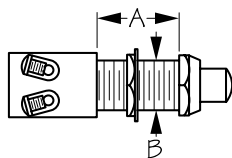
Nylon/Phenolic & Chrome Plated Brass



Bulk	Display	A	B	Amps	Color	Wt.(lb.)	Std. Pack
420415	420415-1	5/16"	1/2"	15	Red	.03	10 ea
420416	420416-1	5/16"	1/2"	15	Black	.03	10 ea

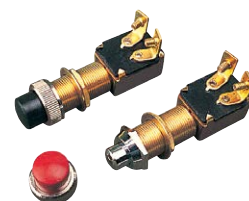
This Horn Button is a panel mounted, push button, momentary On-Off switch for operating fog horns, sirens etc. Mounts in 1/2" diameter hole and is wired with 1/4" QD terminals. This horn switch comes with either a standard black button or bright red button to make it easily identifiable in emergency situations. Maximum panel thickness: 5/16". Constructed of nylon/phenolic and chrome plated brass. 15A @ 12VDC.

⚠ **WARNING:** Cancer and Reproductive Harm - www.P65Warnings.ca.gov



MOMENTARY PUSH BUTTON SWITCH

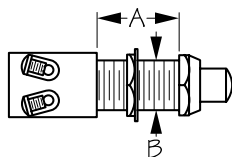
Stamped Brass



Bulk	Display	A	B	Cap Color	Amps	Wt.(lb.)	Std. Pack
420420	420420-1	1"	5/8"	No Cap	15	.07	10 ea
n/a	420421-1	1"	5/8"	Black	15	.10	10 ea
n/a	420422-1	1"	5/8"	Red	15	.10	10 ea
420424	420424-1	Waterproof Cap	5/8"	Black		.03	10 ea
420425	420425-1	Waterproof Cap	5/8"	Red		.03	10 ea

This universal Momentary Push Button On-Off Switch is wired with two screw terminals and is designed to be panel mounted in a 5/8" diameter hole. Switch options include: No cap, a standard black waterproof cap, or a bright red waterproof cap to make it easily identifiable in emergency situations. Maximum panel thickness: 1". Constructed of stamped brass to withstand harsh marine conditions. 15A @ 12VDC.

⚠ **WARNING:** Cancer and Reproductive Harm - www.P65Warnings.ca.gov



MOMENTARY PUSH BUTTON HORN SWITCH

Stamped Brass



Bulk	Display	A	B	Cap Color	Amps	Wt.(lb.)	Std. Pack
420428R	420428R-1	1"	5/8"	Red	20	.10	10 ea

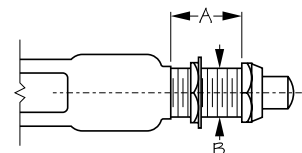
This Momentary Push Button On-Off Horn Switch is wired with two screw terminals and is designed to be panel mounted in a 5/8" diameter hole. Switch includes a bright red waterproof cap to make it easily identifiable in emergency situations. Maximum panel thickness: 1". Constructed of stamped brass to withstand harsh marine conditions. 20A @ 12VDC.

⚠ **WARNING:** Cancer and Reproductive Harm - www.P65Warnings.ca.gov



SPLASH GUARD PUSH BUTTON SWITCH

Stamped Brass



Bulk	Display	A	B	Amps	Wt.(lb.)	Std. Pack
420426	420426-1	13/16"	5/8"	15	.20	10 ea

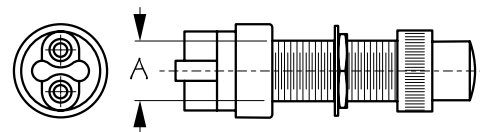
This universal momentary Splash Guard Push Button On-Off Switch is wired with two screw terminals and is designed to be panel mounted in a 5/8" diameter hole. PVC coating protects terminals and switch from water. Not designed for immersion. Can be used with Sea-Dog® Black Cap (420424) or highly visible Red Cap (420425). Maximum panel thickness: 3/4". Constructed of stamped brass to withstand harsh marine conditions. 15A @ 12VDC.

⚠ **WARNING:** Cancer and Reproductive Harm - www.P65Warnings.ca.gov



PUSH BUTTON SWITCH WITH CAP

Polypropylene



Bulk	Display	Action	Amps	A	Max. Panel	Shaft Length	Terminal Type	Cap	Wt.(lb.)	Std. Pack
420427	420427-1	Mom. On/Off	30	5/8"	1-1/8"	Long	Boss-2	Yes	.07	10 ea

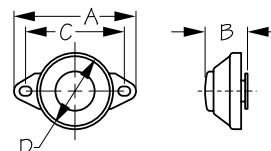
This momentary Push Button On/Off switch features 2 boss copper alloy screw terminal contacts. Compact behind-dash panel dimensions allow for mounting in confined spaces. Overall length: 2-7/8". Mounting stem: 1-7/16L x 5/8"-32 thread. Maximum panel thickness: 1-1/8". 30A @ 12VDC. Constructed of a corrosion resistant glass reinforced polyester housing with an elastomeric rubber internal gasket and ultrasonic welding for increased water resistance. Includes rubber boot nut.

⚠ **WARNING:** Cancer and Reproductive Harm - www.P65Warnings.ca.gov



HORN BUTTON

Brass Chrome Plated



Bulk	Display	A	B	C	D	Amps	Fastener	Wt.(lb.)	Std. Pack
420429	420429-1	2-9/16"	7/8"	2-1/8"	1-5/8"	12	#10 RH	.06	10 ea

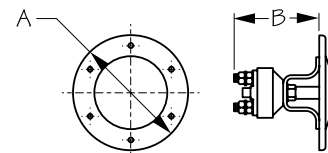
This momentary Horn Button is used for operating fog horns, sirens, etc. Activates signaling device in emergency situations or for communication with locks and bridges. Constructed of chrome plated brass. Installs with two #10 RH fasteners (not included). 12A @ 12VDC.

⚠ **WARNING:** Cancer and Reproductive Harm - www.P65Warnings.ca.gov



FOOT SWITCH

Stamped 304 Stainless Steel/Rubber Cover



Bulk	Display	A	B	Amps	Fastener	Wt.(lb.)	Std. Pack
420430	420430-1	4-7/16"	3-5/16"	30	#8 RH	.73	1 ea
420435	n/a	Replacement Seal				.13	1 ea

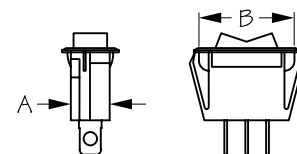
This Foot Switch is normally off and momentarily on when depressed by foot. Ideal for use with windlasses. Constructed of corrosion resistant stamped 304 stainless steel and rubber. Installs with ten #8 RH fasteners (not included).

⚠ **WARNING:** Cancer and Reproductive Harm - www.P65Warnings.ca.gov



ROCKER SWITCH

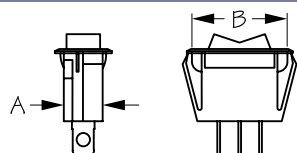
Stamped Brass/Injection Molded Nylon/Polycarbonate



Bulk	Display	Amps	Volts	Circuit	Action	A	B	Illuminating	Wt.(lb.)	Std. Pack
420441	420441-1	15	12	SPST	On/Off	1/2"	1-1/8"	Yes	.02	10 ea
420443	420443-1	15	12	SPDT	On/Off/On	1/2"	1-1/8"	No	.02	10 ea

Rocker Switch wires easily with three stamped brass 1/4" blade terminals. Snap-in panel mount fits standard 1-1/8" X 1/2" switch cut-outs. 420441 illuminates red when in the ON position. Constructed of durable weather resistant injection molded nylon and polycarbonate housing. 15A @ 12VDC.

⚠ **WARNING:** Cancer and Reproductive Harm - www.P65Warnings.ca.gov

**ROCKER SWITCH**

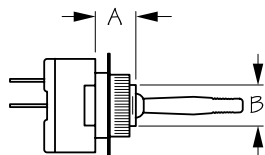
Stamped Brass /Injection Molded Nylon/Polycarbonate



Bulk	Display	Amps	Volts	Circuit	Action	A	B	Illuminating	Wt.(lb.)	Std. Pack
420446	420446-1	15	12	SPST	On/Off	1/2"	1-1/8"	Yes	.02	10 ea

Rocker Switch wires easily with three stamped brass 1/4" blade terminals. Snap-in panel mount fits standard 1-1/8" X 1/2" switch cut-outs. Illuminates red when in the ON position. Constructed of durable weather resistant injection molded nylon and polycarbonate housing. 15A @ 12VDC.

⚠ WARNING: Cancer and Reproductive Harm - www.P65Warnings.ca.gov

**TOGGLE SWITCH**

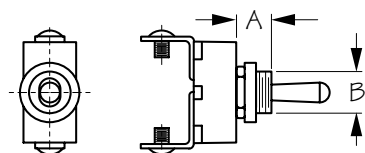
Stamped Brass/Molded Bakelite



Bulk	Display	Circuit	Action	Amps	Volts	A	B	Wt.(lb.)	Std. Pack
420460	420460-1	SPST	On/Off	15	12	7/16"	7/16"	.03	10 ea

This SPST On/Off Toggle Switch includes On/Off dash plate. Maximum panel thickness: 7/16". Constructed of stamped brass and molded Bakelite for durability and corrosion resistance. 15A @ 12VDC.

⚠ WARNING: Cancer and Reproductive Harm - www.P65Warnings.ca.gov

**TOGGLE SWITCH**

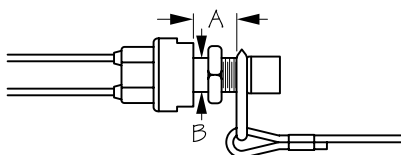
Stamped Brass



Bulk	Display	Circuit	Action	Amps	Volts	A	B	Wt.(lb.)	Std. Pack
420465	420465-1	SPST	On/Off	15	12	3/8"	7/16"	.06	10 ea
420479	420479-1	Waterproof Cap Only						.01	10 ea

This SPST On/Off Toggle Switch wires easily with two screw terminals. Constructed of stamped brass for durability and corrosion resistance. Maximum panel thickness: 3/8". 15A @ 12VDC. Waterproof Cap (420479) sold separately.

⚠ WARNING: Cancer and Reproductive Harm - www.P65Warnings.ca.gov

**KILL SWITCH**

Stamped Brass/Injection Molded Nylon & Delrin



Bulk	Display	A	B	Kill Style	Max Amp	Wt.(lb.)	Std. Pack
420486	420486-1	5/8"	5/8"	Magneto	5	.08	10 ea
420487	420487-1	5/8"	5/8"	Ignition	5	.08	10 ea
420489	420489-1	Lanyard Only				.06	10 ea

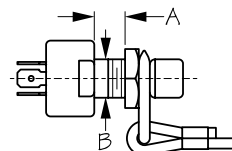
Marine emergency cut-off Kill Switch attaches to your life vest while operating a boat or personal water craft. Designed to instantly cut battery power when detached. The magneto (red cap) version functions in applications where the circuit is normally open (not complete) with the lanyard clip in place on switch. When lanyard is pulled and clip is removed from switch, circuit is closed (complete), allowing grounding to a suitable ground such as a grounding block, the battery, or on the engine itself. The ignition (gray cap) version functions in applications where the circuit is normally closed (complete) with the lanyard clip in place on switch. When lanyard is pulled and clip is removed from switch, the circuit is open (not complete), resulting in interruption of current to the ignition shutting off engine. Both kill switches include a coiled lanyard that is approximately 15" when coiled and 48" when stretched, which should be replaced if worn, cut, or frayed. Mounting hole is 5/8" in diameter. Maximum panel thickness: 5/8". Maximum 5A draw. Constructed of weatherproof injection molded nylon and Delrin with brass terminals. **WARNING:** Switch should be tested for proper function before each use.

⚠ WARNING: Cancer and Reproductive Harm - www.P65Warnings.ca.gov



KILL SWITCH - UNIVERSAL

Stamped Brass/Injection Molded Nylon & Delrin



Bulk	Display	A	B	Kill Style	Max Amp	Wt.(lb.)	Std. Pack
420488	420488-1	7/16"	5/8"	Universal	5	.10	10 ea
420489	420489-1	Lanyard Only				.06	10 ea

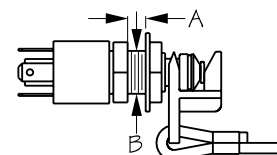
The marine emergency cut-off Universal Kill Switch attaches to your life vest while operating a boat or personal watercraft and is designed to instantly cut battery power when detached. Dual circuitry allows kill switch to be wired for either ignition kill or magneto kill depending on the application. The switch includes a lanyard approximately 15" when coiled and 48" when stretched, which should be replaced if worn, cut, or frayed. Mounting hole is 5/8" in diameter. Maximum panel thickness: 3/8". Maximum 5A draw. Constructed of weatherproof injection molded nylon and Delrin with 1/4" brass terminals. **WARNING:** Switch should be tested for proper function before each use.

⚠ WARNING: Cancer and Reproductive Harm - www.P65Warnings.ca.gov



KILL SWITCH - UNIVERSAL WITH FLOATING LANYARD

Stamped Brass/Injection Molded Nylon & Delrin



Bulk	Display	A	B	Kill Style	Max Amp	Wt.(lb.)	Std. Pack
420498	420498-1	1/4"	5/8"	Universal	5	.13	10 ea
420499	420499-1	Lanyard Only				.08	10 ea

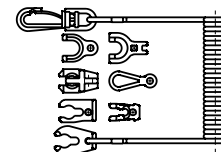
This marine emergency cut-off Universal Kill Switch with Floating Lanyard attaches to your life vest while operating a boat or personal watercraft. Designed to instantly cut battery power when detached. Dual circuitry allows kill switch to be wired for either ignition kill or magneto kill depending on the application. The switch includes a floating lanyard approximately 15" when coiled and 48" when stretched, which should be replaced if worn, cut, or frayed. Mounting hole is 5/8" in diameter. Maximum panel thickness: 3/8". Maximum 5A draw. Constructed of weatherproof injection molded nylon and Delrin with 1/4" brass terminals. **WARNING:** Switch should be tested for proper function before each use.

⚠ WARNING: Cancer and Reproductive Harm - www.P65Warnings.ca.gov



7 KEY KILL SWITCH UNIVERSAL LANYARD

Injection Molded Nylon & Delrin



Bulk	Display	Length	Wt.(lb.)	Std. Pack
n/a	420495-1	50"	.08	10 ea

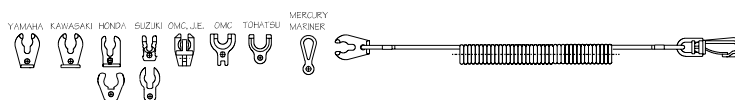
This marine emergency cut-off 7 Key Universal Kill Switch with Lanyard attaches to your life vest while operating a boat or personal watercraft. Designed to instantly cut battery power when detached. The 7 key 50" lanyard fits OMC, Johnson, Evinrude, Mercury, Mariner, Force, Yamaha, Honda, Tohatsu, Suzuki, and Nissan kill switches. Constructed of injection molded nylon and Delrin.

⚠ WARNING: Cancer and Reproductive Harm - www.P65Warnings.ca.gov



KILL SWITCH 10 KEY UNIVERSAL LANYARD

Injection Molded Nylon & Delrin



Bulk	Display	Length	Wt.(lb.)	Std. Pack
n/a	420496-1	50"	.10	10 ea

This marine emergency cut-off 10 Key Universal Kill Switch with Lanyard attaches to your life vest while operating a boat or personal watercraft. Designed to instantly cut battery power when detached. The 10 key 50" lanyard fits Johnson, Evinrude, Mercury, Yamaha, Honda, Tohatsu, Suzuki, Kawasaki, OMC, and Nissan kill switches. Constructed of injection molded nylon and Delrin.

⚠ WARNING: Cancer and Reproductive Harm - www.P65Warnings.ca.gov