



2

[Snaps](#)

[Shackles](#)

[Hooks](#)

[Chain Grippers](#)

[Snap Links](#)

[Quick Links](#)

[Scissor Hooks](#)

[Wire Rope Clips](#)

[Lap Links](#)

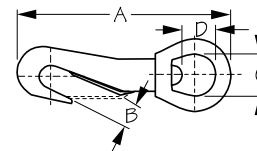
2002

Snaps & Shackles



SWIVEL EYE BABY SNAP

Die Cast Manganese Bronze



Bulk	Display	A	B	C	D	Finish	Wt.(lb.)	Std. Pack
131042	131042-1	2-1/16"	1/4"	7/16"	5/16"	Bronze	.03 / .06	10 ea / 10 pr

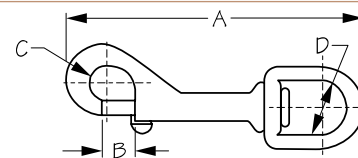
This round Swivel Eye Baby Snap works well in a number of light duty rigging applications. 360° swivel eye eliminates tangling. Constructed of die cast manganese bronze for corrosion resistance and durability.

⚠ WARNING: Cancer and Reproductive Harm - www.P65Warnings.ca.gov



SWIVEL EYE BOLT SNAP

Die Cast Manganese Bronze



Bulk	Display	A	B	C	D	Finish	Wt.(lb.)	Std. Pack
136010	136010-1	2-9/16"	5/16"	5/16"	3/8"	Bronze	.06	10 ea
136012	136012-1	2-11/16"	5/16"	5/16"	1/2"	Bronze	.06	10 ea
136016	136016-1	3-1/8"	3/8"	3/8"	5/8"	Bronze	.11	10 ea
136021	136021-1	3-3/16"	3/8"	3/8"	7/8"	Bronze	.12	10 ea
136025	136025-1	3-1/2"	7/16"	3/8"	1"	Bronze	.15	10 ea
136032	136032-1	4-11/16"	9/16"	5/8"	1-1/4"	Bronze	.31	10 ea

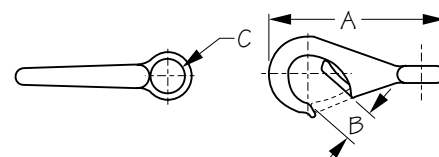
Swivel Eye Bolt Snaps are designed for use with rope, wire, or cable. They can be used for tie-downs, or other rigging applications. 360° swivel strap eye eliminates tangling. Spring-loaded bolts provide secure closure with the advantage of an easy-open thumb lever. Constructed of die cast manganese bronze for corrosion resistance and durability.

⚠ WARNING: Cancer and Reproductive Harm - www.P65Warnings.ca.gov



FAST EYE BOAT SNAP

Die Cast Manganese Bronze or Chrome Plated



Bulk	Display	Size	A	B	C	Finish	Wt.(lb.)	Std. Pack
136120	136120-1	0	2-1/8"	1/4"	7/16"	Bronze	.05	10 ea
136121	136121-1	1	2-7/8"	7/16"	11/16"	Bronze	.09	10 ea
136122	136122-1	2	3-3/16"	9/16"	3/4"	Bronze	.14	10 ea
136123	136123-1	3	3-7/8"	5/8"	3/4"	Bronze	.24	10 ea
136126	136126-1	0	2-1/8"	1/4"	7/16"	Chrome	.05	10 ea

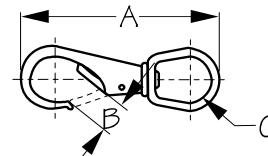
These Fast Eye Boat Snaps feature a spring-loaded latch for easy attachment. Designed for medium duty rigging applications. Handy for anchor lines, tethers, paddle leashes, bow lines, and tow ropes. Constructed of die cast manganese bronze for corrosion resistance and durability. Plain bronze or chrome plated finish.

⚠ WARNING: Cancer and Reproductive Harm - www.P65Warnings.ca.gov



SWIVEL EYE BOAT SNAP

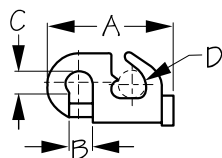
Die Cast Manganese Bronze



Bulk	Display	Size	A	B	C	Finish	Wt.(lb.)	Std. Pack
136131	136131-1	1	3-1/4"	7/16"	5/8"	Bronze	.12	10 ea
136132	136132-1	2	3-3/4"	9/16"	13/16"	Bronze	.18	10 ea
136133	136133-1	3	4-3/8"	9/16"	3/4"	Bronze	.26	10 ea

These Fast Eye Boat Snaps feature a spring-loaded latch for easy attachment. Designed for medium duty rigging applications. 360° swivel eye eliminates tangling. Constructed of die cast manganese bronze for corrosion resistance and durability.

⚠ WARNING: Cancer and Reproductive Harm - www.P65Warnings.ca.gov

**JIB SNAP**

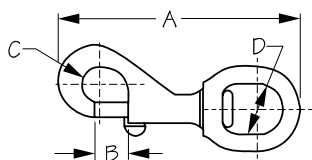
Die Cast Manganese Bronze



Bulk	Display	A	B	C	D	Finish	Wt.(lb.)	Std. Pack
136540	n/a	1-11/16"	1/4"	5/16"	1/4"	Bronze	.05	10 ea
136550	n/a	2-1/8"	7/16"	7/16"	3/8"	Bronze	.08	10 ea
136560	n/a	2-1/2"	1/2"	1/2"	7/16"	Bronze	.12	10 ea

These quick release Jib Snaps are used to secure a jib to a wire forestay. Easy to install they are perfect to hoist a storm jib or staysail. Constructed of die cast manganese bronze for corrosion resistance and durability.

▲ **WARNING:** Cancer and Reproductive Harm - www.P65Warnings.ca.gov

**SWIVEL EYE BOLT SNAP**

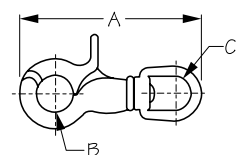
Die Cast Manganese Bronze



Bulk	Display	A	B	C	D	Finish	Wt.(lb.)	Std. Pack
136590	136590-1	3-5/16"	7/16"	1/2"	11/16"	Bronze	.14	10 ea

Swivel Eye Bolt Snaps are designed for use with rope, chain, wire, or cable. They can be used for tie-downs, or other rigging applications. 360° swivel strap eye eliminates tangling. Spring-loaded bolts provide secure closure with the advantage of an easy-open thumb lever. Constructed of die cast manganese bronze for corrosion resistance and durability.

▲ **WARNING:** Cancer and Reproductive Harm - www.P65Warnings.ca.gov

**TRIGGER SNAP**

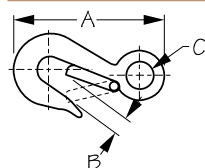
Die Cast Manganese Bronze



Bulk	Display	A	B	C	Finish	Wt.(lb.)	Std. Pack
136800	136800-1	2-9/16"	1/2"	1/2"	Bronze	.09	10 ea

This Trigger Snap is designed for marine and industrial rigging applications. Features an extra secure hinged snap hook that closes tighter under load. Spring-loaded bolts provide secure closure with the advantage of an easy-open thumb lever. 360° swivel strap eye eliminates tangling. Constructed of die cast manganese bronze for corrosion resistance and durability.

▲ **WARNING:** Cancer and Reproductive Harm - www.P65Warnings.ca.gov

**FAST EYE SNAP HOOK**

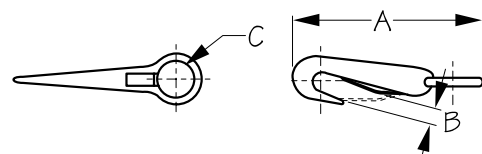
Die Cast Manganese Bronze



Bulk	Display	A	B	C	B.S. (lb.)	Finish	Wt.(lb.)	Std. Pack
138305	138305-1	4-3/4"	13/16"	1-1/8"	1,500	Bronze	.44	10 ea

Heavy duty Fast Eye Snap Hooks feature a breaking strength of 1,500 lbs. and are ideal for a variety of rigging applications including winch cables and mooring buoy lines. These snaps offer rugged durability and added strength. Constructed of die cast manganese bronze for corrosion resistance.

▲ **WARNING:** Cancer and Reproductive Harm - www.P65Warnings.ca.gov

**FAST EYE BABY SNAP**

Die Cast Manganese Bronze or Chrome Plated



Bulk	Display	A	B	C	Finish	Wt.(lb.)	Std. Pack
138420	138420-1	1-13/16"	1/4"	7/16"	Bronze	.03 / .06	10 ea / 10 pr
138425	138425-1	1-13/16"	1/4"	7/16"	Chrome	.03	10 ea

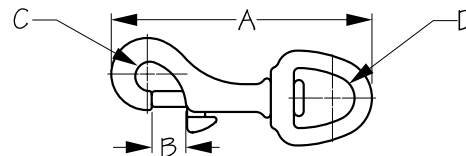
Round Fast Eye Baby Snaps work well in a number of light duty rigging applications. Constructed of die cast manganese bronze for corrosion resistance and durability. Plain bronze or chrome plated finish.

▲ **WARNING:** Cancer and Reproductive Harm - www.P65Warnings.ca.gov



SWIVEL EYE BOLT SNAP

Sand Cast Brass



Bulk	Display	A	B	C	D	Wt.(lb.)	Std. Pack
139010	139010-1	3-5/16"	7/16"	3/8"	11/16"	.12	10 ea
139016	139016-1	3-5/16"	7/16"	3/8"	5/8"	.12	10 ea

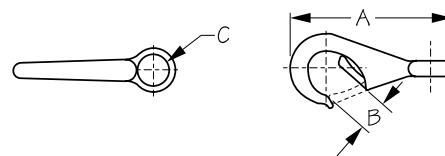
Swivel Eye Bolt Snaps are designed for use with rope, chain, wire, or cable. They can be used for tie-downs, or multiple rigging applications. 360° swivel strap eye eliminates tangling. Spring-loaded bolts provide secure closure with the advantage of an easy-open thumb lever. Constructed of corrosion resistant sand cast brass. Polished finish makes them both functional and decorative.

⚠ WARNING: Cancer and Reproductive Harm - www.P65Warnings.ca.gov



FAST EYE BOAT SNAP

Sand Cast Brass



Bulk	Display	Size	A	B	C	Finish	Wt.(lb.)	Std. Pack
139120	139120-1	0	2-1/8"	1/4"	7/16"	Brass	.06	10 ea
139121	139121-1	1	2-7/8"	5/16"	5/8"	Brass	.11	10 ea
139122	139122-1	2	3-3/16"	1/2"	3/4"	Brass	.11	10 ea
139123	139123-1	3	3-13/16"	9/16"	3/4"	Brass	.24	10 ea

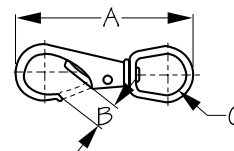
These Fast Eye Boat Snaps feature a spring-loaded latch for easy attachment. Designed for medium duty rigging applications. Handy for anchor lines, tethers, paddle leashes, bow lines and tow ropes. Constructed of corrosion resistant sand cast brass. Polished finish makes them both functional and decorative.

⚠ WARNING: Cancer and Reproductive Harm - www.P65Warnings.ca.gov



SWIVEL EYE BOAT SNAP

Sand Cast Brass



Bulk	Display	Size	A	B	C	Finish	Wt.(lb.)	Std. Pack
139131	139131-1	1	3-3/16"	3/8"	3/4"	Brass	.14	10 ea
139132	139132-1	2	3-5/8"	1/2"	3/4"	Brass	.18	10 ea
139133	139133-1	3	4-1/2"	9/16"	3/4"	Brass	.27	10 ea

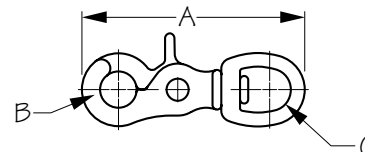
This Swivel Eye Boat Snap features a spring-loaded latch for easy attachment. Designed for medium duty rigging applications. 360° swivel eye eliminates tangling. Constructed of corrosion resistant sand cast brass. Polished finish makes them both functional and decorative.

⚠ WARNING: Cancer and Reproductive Harm - www.P65Warnings.ca.gov



TRIGGER SNAP

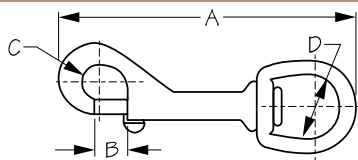
Sand Cast Brass



Bulk	Display	A	B	C	Finish	Wt.(lb.)	Std. Pack
139800	139800-1	2-11/16"	7/16"	1/2"	Brass	.09	10 ea

This Trigger Snap is designed for marine and industrial rigging applications. Features an extra secure hinged snap hook that closes tighter under load. Spring-loaded bolts provide secure closure with the advantage of an easy-open thumb lever. 360° swivel strap eye eliminates tangling. Constructed of corrosion resistant sand cast brass.

⚠ WARNING: Cancer and Reproductive Harm - www.P65Warnings.ca.gov

**BABY SWIVEL EYE BOLT SNAP**

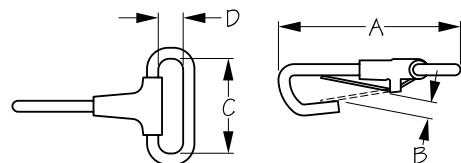
Sand Cast Brass



Bulk	Display	A	B	C	D	Wt.(lb.)	Std. Pack
139900	n/a	3"	5/16"	5/16"	1/2"	.07	10 ea

Baby Swivel Eye Bolt Snap is designed for use with rope, wire, or cable. They can be used for tie-downs, lifting wires, or in other rigging applications. 360° swivel strap eye eliminates tangling. Spring-loaded bolts provide secure closure with the advantage of an easy-open thumb lever. Constructed of corrosion resistant sand cast brass.

▲ **WARNING:** Cancer and Reproductive Harm - www.P65Warnings.ca.gov

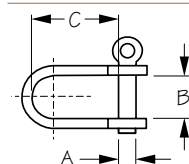
**WEBBING SPRING SNAP**

Investment Cast 316 Stainless Steel



Bulk	Display	A	B	C	D	Wt.(lb.)	Std. Pack
139896	139896-1	2-3/16"	1/4"	1-1/8"	5/16"	.03	10 ea

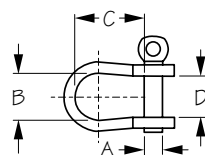
These Webbing Spring Snaps can be used for tie-downs, or multiple light duty rigging applications. Ideal for use with 1" webbing. Constructed of corrosion resistant investment cast 316 stainless steel.

**D-SHACKLE**

Stamped 304 Stainless Steel



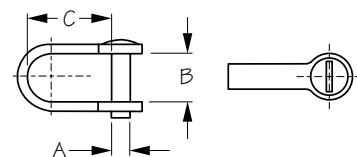
Bulk	Display	A	B	C	B.S. (lb.)	Wt.(lb.)	Std. Pack
140041	n/a	5/32"	3/8"	5/8"	1,100	.01	10 ea
140051	n/a	3/16"	7/16"	11/16"	2,640	.03	10 ea
140052	n/a	3/16"	5/8"	1"	2,640	.04	10 ea
140060	n/a	1/4"	5/8"	15/16"	3,080	.04	10 ea
140082	n/a	5/16"	3/4"	1-5/8"	6,600	.11	10 ea

**BOW SHACKLE**

Stamped 304 Stainless Steel



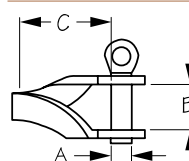
Bulk	Display	A	B	C	D	B.S. (lb.)	Wt.(lb.)	Std. Pack
140106	n/a	1/4"	5/8"	15/16"	9/16"	4,400	.05	10 ea
140108	n/a	5/16"	11/16"	1-1/4"	11/16"	6,600	.09	10 ea

**SAILMAKER D-SHACKLE**

Stamped 304 Stainless Steel



Bulk	Display	A	B	C	B.S. (lb.)	Wt.(lb.)	Std. Pack
140141	n/a	5/32"	3/8"	5/8"	1,100	.01	10 ea
140151	n/a	3/16"	7/16"	11/16"	2,640	.02	10 ea
140152	n/a	3/16"	5/8"	1"	2,640	.04	10 ea

**TWISTED D-SHACKLE**

Stamped 304 Stainless Steel

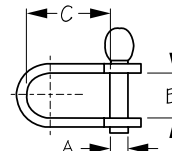


Bulk	Display	A	B	C	B.S. (lb.)	Wt.(lb.)	Std. Pack
140175	n/a	3/16"	7/16"	1-5/16"	2,640	.04	10 ea
140178	n/a	5/16"	11/16"	1-1/2"	6,600	.11	10 ea



KEY PIN D-SHACKLE

Stamped 304 Stainless Steel

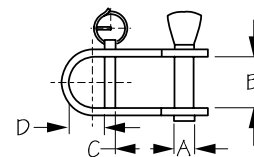


Bulk	Display	A	B	C	B.S. (lb.)	Wt.(lb.)	Std. Pack
140205	n/a	3/16"	5/8"	1-7/16"	2,640	.04	10 ea
140206	n/a	3/16"	1/2"	1"	2,640	.03	10 ea
140207	n/a	1/4"	5/8"	1-9/16"	4,400	.06	10 ea



HALYARD D-SHACKLE - LOOSE PIN

Stamped 304 Stainless Steel

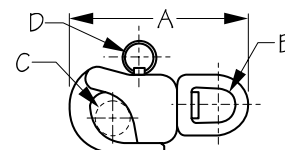


Bulk	Display	A	B	C	D	B.S. (lb.)	Wt.(lb.)	Std. Pack
140235	n/a	3/16"	5/8"	13/16"	1/2"	1,540	.04	10 ea
140236	n/a	1/4"	5/8"	1"	1/2"	3,300	.06	10 ea
140238	n/a	5/16"	13/16"	1-1/16"	7/16"	4,400	.11	10 ea



SWIVEL EYE SNAP SHACKLE

Investment Cast 316 Stainless Steel



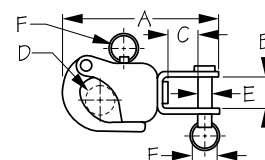
Bulk	Display	A	B	C	D	Wt.(lb.)	Std. Pack
142700	n/a	2-11/16"	1/2"	9/16"	3/8"	.14	10 ea
142900	n/a	3-1/2"	5/8"	3/4"	7/16"	.27	10 ea

Not load rated.



TOGGLE SNAP SHACKLE

Investment Cast 316 Stainless Steel



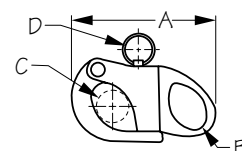
Bulk	Display	A	B	C	D	E	F	Wt.(lb.)	Std. Pack
142702	n/a	2-11/16"	9/16"	3/8"	9/16"	1/4"	7/16"	.14	10 ea
142902	n/a	3-5/16"	9/16"	9/16"	3/4"	1/4"	1/2"	.27	10 ea

Not load rated.



FIXED EYE SNAP SHACKLE

Investment Cast 316 Stainless Steel



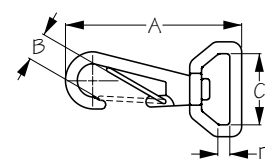
Bulk	Display	A	B	C	D	Wt.(lb.)	Std. Pack
143520	n/a	2-1/4"	3/8"	9/16"	3/8"	.10	10 ea
143660	n/a	2-13/16"	1/2"	3/4"	1/2"	.20	10 ea
143900	n/a	4"	9/16"	7/8"	3/8"	.30	10 ea

Not load rated.



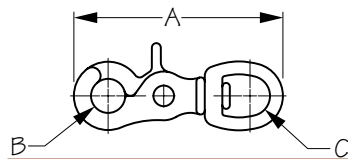
WEBBING BABY SNAP

Investment Cast 316 Stainless Steel



Bulk	Display	A	B	C	D	Wt.(lb.)	Std. Pack
145045	n/a	2-9/16"	3/8"	1"	3/16"	.07	10 ea

This Webbing Baby Snap can be used for tie-downs, or multiple light duty rigging applications. Ideal for use with 1" webbing. Constructed of corrosion resistant investment cast 316 stainless steel.

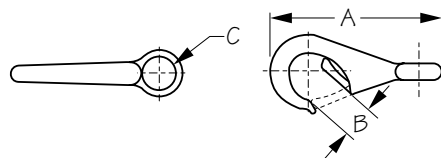
**TRIGGER SNAP**

Investment Cast 316 Stainless Steel



Bulk	Display	A	B	C	Wt.(lb.)	Std. Pack
146048	146048-1	2-11/16"	7/16"	1/2"	.09	10 ea

This Trigger Snap is designed for marine and industrial rigging applications. Features an extra secure hinged snap hook that closes tighter under load. Spring-loaded bolts provide secure closure with the advantage of an easy-open thumb lever. 360° swivel strap eye eliminates tangling. Constructed of corrosion resistant investment cast 316 stainless steel.

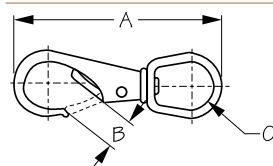
**FAST EYE BOAT SNAP**

Investment Cast 316 Stainless Steel



Bulk	Display	Size	A	B	C	Wt.(lb.)	Std. Pack
146120	146120-1	0	2-1/16"	1/4"	7/16"	.06	10 ea
146121	146121-1	1	2-7/8"	7/16"	5/8"	.09	10 ea
146122	146122-1	2	3-3/16"	1/2"	3/4"	.14	10 ea
146123	146123-1	3	3-13/16"	11/16"	3/4"	.27	10 ea

These Fast Eye Boat Snaps feature a spring-loaded latch for easy attachment. Designed for medium duty rigging applications. Handy for anchor lines, tethers, paddle leashes, bow lines, and tow ropes. Constructed of corrosion resistant investment cast 316 stainless steel.

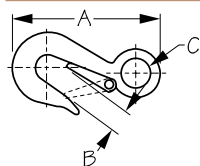
**SWIVEL EYE BOAT SNAP**

Investment Cast 316 Stainless Steel



Bulk	Display	Size	A	B	C	Wt.(lb.)	Std. Pack
146131	146131-1	1	3-5/16"	7/16"	3/4"	.13	10 ea
146132	146132-1	2	3-7/8"	1/2"	3/4"	.21	10 ea
146133	146133-1	3	4-5/8"	1/2"	7/8"	.33	10 ea

These Swivel Eye Boat Snaps feature a spring-loaded latch for easy attachment. Designed for medium duty rigging applications. 360° swivel eye eliminates tangling. Constructed of corrosion resistant investment cast 316 stainless steel. Also see die cast zinc chrome plated Swivel Eye Boat Snap (148131).

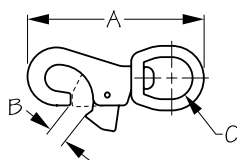
**FAST EYE SNAP HOOK**

Investment Cast 316 Stainless Steel



Bulk	Display	A	B	C	B.S. (lb.)	Wt.(lb.)	Std. Pack
146300	146300-1	3-15/16"	5/8"	3/4"	7,000	.26	5 ea
146305	146305-1	4-11/16"	3/4"	1-1/8"	11,900	.42	5 ea

These Fast Eye Snap Hooks are ideal for a variety of marine applications. Superior breaking strength. Fast eye detail provides secure line attachments. Suitable for harnesses, fishing lines, and mooring buoy lines. Constructed of corrosion resistant investment cast 316 stainless steel.

**BULL NOSE SNAP**

Investment Cast 316 Stainless Steel



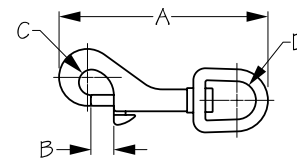
Bulk	Display	A	B	C	Wt.(lb.)	Std. Pack
146333	146333-1	4-1/2"	1/2"	1"	.40	5 ea

This Bull Nose Snap features a spring-loaded latch for easy attachment. Designed for medium duty rigging applications. 360° swivel eye eliminates tangling. Constructed of corrosion resistant investment cast 316 stainless steel. Also see cast zinc chrome plated Bull Nose Snap (148333).



SWIVEL EYE BOLT SNAP

Investment Cast 316 Stainless Steel



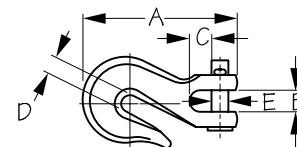
Bulk	Display	A	B	C	D	Wt.(lb.)	Std. Pack
146590	146590-1	3-9/16"	5/16"	5/16"	3/4"	.13	10 ea

Swivel Eye Bolt Snaps are designed for use with rope, chain, wire, or cable. They can be used for tie-downs, or multiple rigging applications. 360° swivel strap eye eliminates tangling. Spring-loaded bolts provide secure closure with the advantage of an easy-open thumb lever. Constructed of corrosion resistant investment cast 316 stainless steel.



CLEVIS GRAB HOOK

Investment Cast 316 Stainless Steel

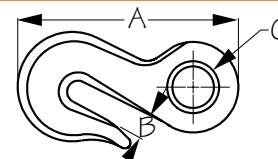


Bulk	Display	Chain Size	B.S. (lb.)	A	B	C	D	E	Wt.(lb.)	Std. Pack
146706	n/a	1/4"	4,630	3-1/8"	7/16"	1/2"	3/8"	5/16"	.34	5 ea
146708	n/a	5/16"	6,830	3-3/4"	1/2"	9/16"	7/16"	7/16"	.64	5 ea
146710	n/a	3/8"	8,800	4-1/4"	9/16"	5/8"	1/2"	1/2"	.89	5 ea
146712	n/a	1/2"	16,200	5-5/8"	11/16"	13/16"	5/8"	5/8"	1.95	5 ea



EYE GRAB HOOK

Investment Cast 316 Stainless Steel

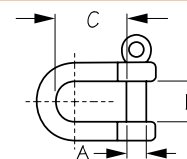


Bulk	Display	A	B	C	B.S. (lb.)	Wt.(lb.)	Std. Pack
146736	n/a	3"	1/4"	1/2"	5,000	.30	5 ea
146738	n/a	3-1/2"	5/16"	9/16"	7,000	.60	5 ea
146740	n/a	4"	3/8"	11/16"	10,000	.80	5 ea
146742	n/a	5-3/8"	1/2"	7/8"	14,000	1.80	5 ea



D-SHACKLE

Investment Cast 316 Stainless Steel Body



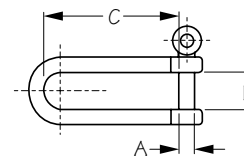
Bulk	Display	A	B	C	Wt.(lb.)	Std. Pack
147004	147004-1	3/16"	5/16"	9/16"	.04	10 ea
147006	147006-1	1/4"	1/2"	13/16"	.05	10 ea
147008	147008-1	5/16"	5/8"	1-1/8"	.14	10 ea
147010	147010-1	3/8"	13/16"	1-3/8"	.24	10 ea
147012	147012-1	7/16"	1"	1-5/8"	.26	10 ea
147016	n/a	5/8"	1-1/4"	2-3/16"	.98	1 ea

These D-Shackles have straight sides with a U-shape rounded bottom. The U-shaped end can handle heavy loads even on the straight sides (may cause bending). Designed for rigging applications with bidirectional loads. Constructed of corrosion resistant investment cast 316 stainless steel. We do not load rate cast shackles.



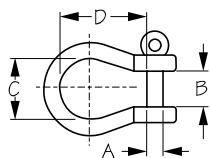
LONG D-SHACKLE

Investment Cast 316 Stainless Steel Body



Bulk	Display	A	B	C	Wt.(lb.)	Std. Pack
147038	n/a	5/16"	11/16"	2-7/16"	.21	10 ea

This Long D-Shackle features a proportionally longer length to offer a high strength to weight ratio. Designed for rigging applications with bi-directional loads. Features a screw pin closure for quick removal, making them ideal for rigging applications where fast and/or repeated connecting and disconnecting are required. Constructed of corrosion resistant investment cast 316 stainless steel. We do not load rate cast shackles.

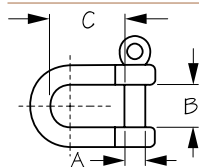
**BOW SHACKLE**

Investment Cast 316 Stainless Steel Body



Bulk	Display	A	B	C	D	Wt.(lb.)	Std. Pack
147054	147054-1	3/16"	5/16"	9/16"	11/16"	.04	10 ea
147056	147056-1	1/4"	1/2"	13/16"	1-1/16"	.06	10 ea
147058	147058-1	5/16"	5/8"	1-1/8"	1-7/16"	.31	10 ea
147060	147060-1	3/8"	13/16"	1-3/8"	1-13/16"	.31	10 ea
147062	147062-1	1/2"	1"	1-11/16"	2-5/16"	.50	10 ea
147066	n/a	5/8"	1-1/4"	2-3/16"	2-15/16"	1.19	1 ea

These rounded Bow Shackles are designed to handle many different types of load from any direction. Features a screw pin closure for quick removal, making them ideal for rigging applications where fast and/or repeated connecting and disconnecting are required. Constructed of corrosion resistant investment cast 316 stainless steel. We do not load rate cast shackles.

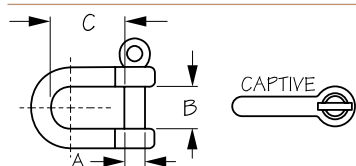
**D-SHACKLE**

Forged 316 Stainless Steel



Bulk	Display	A	B	C	B.S. (lb.)	Wt.(lb.)	Std. Pack
147103	n/a	5/32"	3/8"	11/16"	1,540	.02	10 ea
147104	n/a	3/16"	7/16"	11/16"	2,200	.03	10 ea
147106	n/a	1/4"	1/2"	3/4"	3,300	.06	10 ea
147108	n/a	5/16"	11/16"	1-1/4"	6,600	.11	10 ea
147110	n/a	3/8"	13/16"	1-3/8"	9,900	.26	10 ea
147112	n/a	7/16"	15/16"	1-1/2"	15,400	.28	10 ea

D-Shackles have straight sides with a U-shape bottom. The U-shaped end can handle heavy loads even on the straight sides (may cause bending). Designed for rigging with bi-directional loads. Constructed of corrosion resistant forged 316 stainless steel.

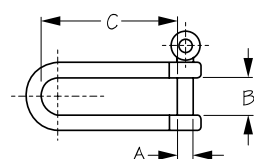
**CAPTIVE PIN D-SHACKLE**

Forged 316 Stainless Steel



Bulk	Display	A	B	C	B.S. (lb.)	Wt.(lb.)	Std. Pack
147123	147123-1	5/32"	3/8"	11/16"	1,540	.02	10 ea
147124	147124-1	3/16"	7/16"	11/16"	2,200	.03	10 ea
147126	147126-1	1/4"	1/2"	7/8"	3,300	.06	10 ea
147128	147128-1	5/16"	11/16"	1-1/4"	6,600	.11	10 ea
147130	147130-1	3/8"	13/16"	1-3/8"	9,900	.26	10 ea
147132	147132-1	1/2"	15/16"	1-1/2"	15,400	.28	10 ea

These D-Shackles have straight sides with a U-shape rounded bottom. The U-shaped end can handle heavy loads even on the straight sides, however, may cause bending. Designed for rigging applications with bi-directional loads. Features a captive pin which completely clears the opening of the shackle when open, recessed in a secured, flush position. The pin remains captive and will not fall out; no risk of loss due to vibration. With other shackles, the pin is not flush until you partially unscrew it. Ideal for rigging applications where single-handed operation is required. Constructed of corrosion resistant forged 316 stainless steel.

**LONG D-SHACKLE**

Forged 316 Stainless Steel



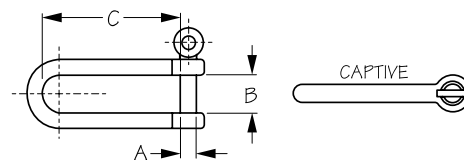
Bulk	Display	A	B	C	B.S. (lb.)	Wt.(lb.)	Std. Pack
147153	147153-1	5/32"	5/16"	1-5/16"	1,540	.03	10 ea
147154	147154-1	3/16"	7/16"	1-1/2"	2,200	.05	10 ea
147156	147156-1	1/4"	1/2"	1-13/16"	3,300	.08	10 ea
147158	147158-1	5/16"	11/16"	2-7/16"	6,600	.21	10 ea
147160	147160-1	3/8"	15/16"	3"	9,900	.37	10 ea

These Long D-Shackles feature a longer length to offer a high strength to weight ratio. Designed for rigging applications with bi-directional loads. Features a screw pin closure for quick removal, making them ideal for rigging applications where fast and/or repeated connecting and disconnecting are required. Constructed of corrosion resistant forged 316 stainless steel.



CAPTIVE PIN LONG D-SHACKLE

Forged 316 Stainless Steel



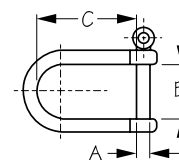
Bulk	Display	A	B	C	B.S. (lb.)	Wt.(lb.)	Std. Pack
147173	147173-1	5/32"	5/16"	1-5/16"	1,540	.03	10 ea
147174	147174-1	3/16"	7/16"	1-9/16"	2,200	.05	10 ea
147176	147176-1	1/4"	1/2"	1-7/8"	3,300	.08	10 ea
147178	147178-1	5/16"	11/16"	2-3/8"	6,600	.21	10 ea
147180	147180-1	3/8"	15/16"	3"	9,900	.37	10 ea

These Captive Pin Long D-Shackles feature a proportionally longer length to offer a high strength to weight ratio. Designed for rigging applications with bi-directional loads. Features a captive pin which completely clears the opening of the shackle when open, recessed in a secured, flush position. The pin remains captive and will not fall out; no risk of loss due to vibration. With other shackles, the pin is not flush until you partially unscrew it. Ideal for rigging applications where single-handed operation is required. Constructed of corrosion resistant forged 316 stainless steel.



WIDE D-SHACKLE (MOORING BUOY SHACKLE)

Forged 316 Stainless Steel



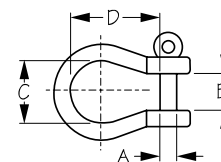
Bulk	Display	A	B	C	B.S. (lb.)	Wt.(lb.)	Std. Pack
147184	147184-1	3/16"	13/16"	1-7/16"	2,200	.05	10 ea
147186	147186-1	1/4"	1-1/8"	1-11/16"	3,000	.09	10 ea
147188	147188-1	5/16"	1-3/8"	2-1/8"	6,000	.20	10 ea
147190	147190-1	3/8"	1-9/16"	2-1/2"	9,000	.39	10 ea

Wide D-Shackles have straight sides with a U-shape rounded bottom. The extra width provides maximum mounting area. The U-shaped end can handle heavy loads even on the straight sides, however, may cause bending. Designed for rigging applications with bi-directional loads. Ideal for use on mooring buoys. Constructed of corrosion resistant forged 316 stainless steel.



BOW SHACKLE

Forged 316 Stainless Steel



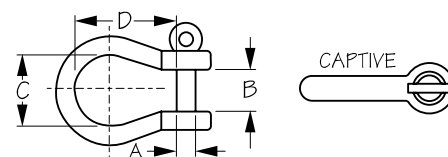
Bulk	Display	A	B	C	D	B.S. (lb.)	Wt.(lb.)	Std. Pack
147203	n/a	5/32"	5/16"	9/16"	11/16"	1,540	.03	10 ea
147204	n/a	3/16"	3/8"	11/16"	3/4"	2,200	.03	10 ea
147206	n/a	1/4"	1/2"	13/16"	15/16"	3,300	.07	10 ea
147208	n/a	5/16"	5/8"	1"	1-1/4"	6,600	.16	10 ea
147210	n/a	3/8"	13/16"	1-1/4"	1-3/8"	9,900	.29	10 ea
147212	n/a	7/16"	1"	1-7/16"	1-3/4"	15,400	.51	10 ea

With their rounded shape, Bow Shackles are designed to handle many different types of load from any direction. Features a screw pin closure for quick removal, making them ideal for rigging applications where fast and/or repeated connecting and disconnecting are required. Ideal for many rigging applications. Constructed of corrosion resistant forged 316 stainless steel.



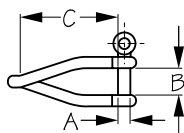
CAPTIVE PIN BOW SHACKLE

Forged 316 Stainless Steel



Bulk	Display	A	B	C	D	B.S. (lb.)	Wt.(lb.)	Std. Pack
147223	147223-1	5/32"	5/16"	5/8"	15/16"	1,540	.03	10 ea
147224	147224-1	3/16"	7/16"	11/16"	1"	2,200	.03	10 ea
147226	147226-1	1/4"	1/2"	13/16"	1-1/4"	3,300	.07	10 ea
147228	147228-1	5/16"	9/16"	15/16"	1-3/16"	6,600	.16	10 ea
147230	147230-1	3/8"	13/16"	1-1/4"	2"	9,900	.29	10 ea

These rounded Bow Shackles are designed to handle many different types of load from any direction. Features a captive pin which completely clears the opening of the shackle when open, recessed in a secured, flush position. The pin remains captive and will not fall out; no risk of loss due to vibration. With other shackles, the pin is not flush until you partially unscrew it. Ideal for rigging applications where single-handed operation is required. Constructed of corrosion resistant forged 316 stainless steel.

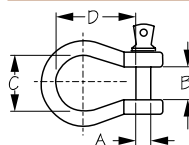
**TWISTED D-SHACKLE**

Forged 316 Stainless Steel



Bulk	Display	A	B	C	B.S. (lb.)	Wt.(lb.)	Std. Pack
147403	147403-1	5/32"	5/16"	1-1/4"	1,540	.03	10 ea
147404	147404-1	3/16"	3/8"	1-1/2"	2,200	.04	10 ea
147406	147406-1	1/4"	1/2"	1-13/16"	3,300	.08	10 ea
147408	147408-1	5/16"	5/8"	2-1/4"	6,600	.19	10 ea
147410	147410-1	3/8"	13/16"	2-3/4"	9,900	.37	10 ea

These Twisted D-Shackles are great when you need the pin to be perpendicular to the top of the loop, such as a jib halyard block attachment to the mast or a jib tack attachment for smaller boats. Constructed of corrosion resistant forged 316 stainless steel.

**SCREW PIN ANCHOR BOW SHACKLE-LOAD RATED**

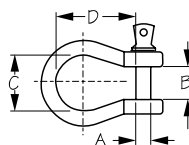
Hot Dipped Drop Forged Galvanized Steel



Bulk	Display	Size	A	B	C	D	WLL (In Tons)	Wt.(lb.)	Std. Pack
147604	n/a	3/16"	1/4"	5/16"	11/16"	7/8"	1/3	.08	10 ea
147606	n/a	1/4"	5/16"	9/16"	3/4"	1-1/8"	1/2	.12	10 ea
147608	n/a	5/16"	3/8"	1/2"	13/16"	1-3/16"	3/4	.19	10 ea
147610	n/a	3/8"	7/16"	5/8"	1"	1-7/16"	1	.34	10 ea
147611	n/a	7/16"	1/2"	11/16"	1-1/8"	1-11/16"	1-1/2	.50	10 ea
147612	n/a	1/2"	5/8"	13/16"	1-1/4"	1-7/8"	2	.71	10 ea
147616	n/a	5/8"	3/4"	1-1/16"	1-11/16"	2-5/16"	3-1/4	1.36	5 ea
147619	n/a	3/4"	7/8"	1-1/4"	1-15/16"	2-3/4"	4-3/4	2.27	5 ea
147622	n/a	7/8"	1"	1-3/8"	2-1/4"	3-1/4"	5	3.48	1 ea
147626	n/a	1"	1-1/8"	1-3/4"	2-11/16"	3-11/16"	7-1/2	5.01	1 ea

With their rounded shape, Screw Pin Anchor Bow Shackles are designed to handle many different types of load from any direction. Features a screw pin closure for quick removal, making them ideal for rigging applications where fast and/or repeated connecting and disconnecting are required. Ideal for joining anchors to mooring chain. Constructed of hot dipped drop forged galvanized steel. They comply with Federal Spec. RR-C-271b and are load rated.

⚠ **WARNING:** Cancer and Reproductive Harm - www.P65Warnings.ca.gov

**SCREW PIN ANCHOR BOW SHACKLE**

Hot Dipped Drop Forged Galvanized Steel



Bulk	Display	Size	A	B	C	D	Wt.(lb.)	Std. Pack
147804	147804-1	3/16"	1/4"	3/8"	9/16"	13/16"	.04	10 ea
147806	147806-1	1/4"	5/16"	7/16"	3/4"	1-1/16"	.07	10 ea
n/a	147806-2	1/4"	5/16"	7/16"	3/4"	1-1/16"	.14	10 pr
147808	147808-1	5/16"	3/8"	1/2"	13/16"	1-1/8"	.14	10 ea
n/a	147808-2	5/16"	3/8"	1/2"	13/16"	1-1/8"	.28	10 pr
147810	147810-1	3/8"	7/16"	11/16"	15/16"	1-1/2"	.28	10 ea
n/a	147810-2	3/8"	7/16"	11/16"	15/16"	1-1/2"	.48	10 pr
147811	147811-1	7/16"	1/2"	3/4"	1-1/8"	1-11/16"	.36	10 ea
n/a	147811-2	7/16"	1/2"	3/4"	1-1/8"	1-11/16"	.72	10 pr
147812	147812-1	1/2"	9/16"	11/16"	1-1/4"	1-13/16"	.49	10 ea
147816	n/a	5/8"	3/4"	15/16"	1-11/16"	2-3/8"	1.24	5 ea
147819	n/a	3/4"	13/16"	1-1/4"	2-1/16"	2-7/8"	2.26	5 ea
147822	n/a	7/8"	1"	1-1/2"	2-1/4"	3-1/16"	3.07	1 ea
147826	n/a	1"	1-1/16"	1-11/16"	2-7/16"	3-11/16"	4.79	1 ea
n/a	147806-5	Display POP-Galvanized Shackle 1/4"-50 pcs.					2.25	1 ea
n/a	147808-5	Display POP-Galvanized Shackle 5/16"-40 pcs.					5.85	1 ea
n/a	147810-5	Display POP-Galvanized Shackle 3/8"-30 pcs.					8.65	1 ea
n/a	147811-5	Display POP-Galvanized Shackle 7/16"-20 pcs.					7.45	1 ea
n/a	147812-5	Display POP-Galvanized Shackle 1/2"-15 pcs.					9.17	1 ea

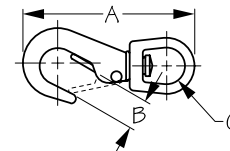
With their rounded shape, Screw Pin Anchor Bow Shackles are designed to handle many different types of load from any direction. Features a screw pin closure for quick removal, making them ideal for rigging applications where fast and/or repeated connecting and disconnecting are required. Ideal for joining anchors to mooring chain. Great for anchor kits. Now available as pairs in aftermarket packaging. Constructed of hot dipped drop forged galvanized steel.

⚠ **WARNING:** Cancer and Reproductive Harm - www.P65Warnings.ca.gov



SWIVEL EYE BOAT SNAP

Die Cast Zinc Chrome Plated



Bulk	Display	A	B	C	Wt.(lb.)	Std. Pack
148131	148131-1	3-1/4"	1/2"	11/16"	.12	10 ea

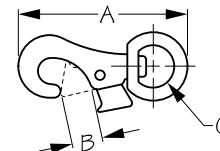
Swivel Eye Boat Snap features a spring-loaded latch for medium duty applications. 360° swivel eye eliminates tangling. Constructed of chrome plated die cast zinc. Recommended for fresh water. Also see Swivel Eye Boat Snaps (146131-146133).

⚠ WARNING: Cancer and Reproductive Harm - www.P65Warnings.ca.gov



BULL NOSE SNAP

Die Cast Zinc Chrome Plated



Bulk	Display	A	B	C	Wt.(lb.)	Std. Pack
148333	148333-1	4-1/8"	9/16"	11/16"	.31	10 ea

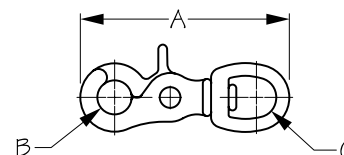
This Bull Nose Snap features a spring-loaded latch for medium duty applications. 360° swivel eye eliminates tangling. Constructed of chrome plated die cast zinc. Recommended for fresh water. Also see stainless Bull Nose Snap (146333).

⚠ WARNING: Cancer and Reproductive Harm - www.P65Warnings.ca.gov



TRIGGER SNAP

Die Cast Zinc Chrome Plated



Bulk	Display	A	B	C	Wt.(lb.)	Std. Pack
148800	148800-1	2-11/16"	7/16"	1/2"	.09	10 ea

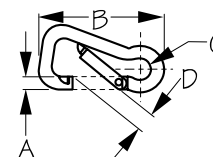
This Trigger Snap is designed for marine and industrial rigging applications. Features an extra secure hinged snap hook that closes tighter under load. Spring-loaded bolts provide secure closure with the advantage of an easy-open thumb lever. 360° swivel strap eye eliminates tangling. Constructed of chrome plated die cast zinc. Also see stainless Trigger Snap (146048).

⚠ WARNING: Cancer and Reproductive Harm - www.P65Warnings.ca.gov



ASYMMETRICAL SNAP HOOK

Formed 316 Stainless Steel



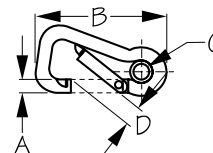
Bulk	Display	A	B	C	D	B.S. (lb.)	Wt.(lb.)	Std. Pack
150060	150060-1	1/4"	2-3/8"	5/16"	7/16"	1,160	.06	10 ea
150080	150080-1	5/16"	3-1/4"	7/16"	1/2"	2,300	.16	10 ea
150100	150100-1	3/8"	4"	9/16"	3/4"	3,600	.30	10 ea
150120	150120-1	7/16"	4-3/4"	13/16"	15/16"	6,600	.44	10 ea

Asymmetrical Snap Hooks provide approximately 50% higher breaking strength over traditional snap hooks. It also allows greater gate clearance, increasing the passage area into the snap. Constructed of corrosion resistant formed 316 stainless steel.



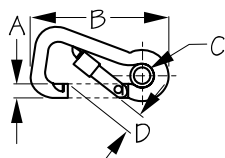
ASYMMETRICAL SNAP HOOK WITH EYE INSERT

Formed 316 Stainless Steel



Bulk	Display	A	B	C	D	B.S. (lb.)	Wt.(lb.)	Std. Pack
150065	150065-1	1/4"	2-3/8"	1/4"	7/16"	599	.07	10 ea
150085	150085-1	5/16"	3-1/4"	7/16"	1/2"	1,120	.16	10 ea
150105	150105-1	3/8"	4"	9/16"	11/16"	1,605	.30	10 ea
150125	150125-1	7/16"	4-3/4"	11/16"	15/16"	2,161	.44	10 ea

These Asymmetric Snap Hooks with Eye Inserts are designed to place more of the load on the stronger, non-gate side which significantly increases the breaking strength over traditional rounded style snap hooks. The offset body style allows greater gate clearance, increasing the passage area into the snap. The eye insert provides a secure attachment to lines for use on harnesses, fishing lines, mooring buoy lines, etc. Constructed of corrosion resistant formed 316 stainless steel.

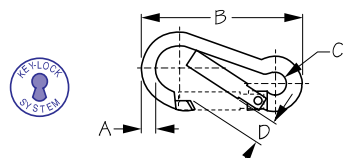
**LOCKING ASYMMETRICAL SNAP HOOK WITH EYE INSERT**

Formed 316 Stainless Steel



Bulk	Display	A	B	C	D	B.S. (lb.)	Wt.(lb.)	Std. Pack
150088	n/a	5/16"	3-1/8"	3/8"	1/2"	2,300	.16	10 ea
150108	n/a	3/8"	4"	9/16"	11/16"	3,600	.30	10 ea
150128	n/a	7/16"	4-3/4"	11/16"	15/16"	6,600	.44	10 ea

These Locking Asymmetric Snap Hooks with Eye Inserts are designed to place more of the load on the stronger, non-gate side which significantly increases the breaking strength over traditional rounded style snap hooks. The offset body style allows greater gate clearance, increasing the passage area into the snap. The eye insert provides a secure attachment to lines for use on harnesses, fishing lines, mooring buoy lines, etc. The barrel locking gate locks automatically when released, greatly reducing the possibility of accidental opening. Locking cylinder also reduces wear on the rope and allows for one-handed operation. Constructed of corrosion resistant formed 316 stainless steel.

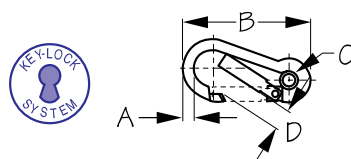
**SNAP HOOK**

Formed 316 Stainless Steel



Bulk	Display	A	B	C	D	B.S. (lb.)	Wt.(lb.)	Std. Pack
151060	151060-1	1/4"	2-3/8"	3/8"	3/8"	660	.06	10 ea
151080	151080-1	5/16"	3-1/8"	7/16"	7/16"	1,700	.15	10 ea
151100	151100-1	3/8"	4"	9/16"	5/8"	2,600	.29	10 ea
151120	151120-1	7/16"	4-3/4"	3/4"	11/16"	4,400	.42	10 ea
151160	n/a	1/2"	6-5/16"	7/8"	1-1/8"	5,200	.78	5 ea

These Snap Hooks feature a key-lock connection for added security. Spring-loaded closure enables quick attachment to a wide range of fixing points. For use with ropes, chains, straps, and small diameter cable. Ideal for multiple rigging and anchoring applications. Constructed of corrosion resistant formed 316 stainless steel.

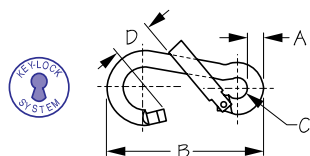
**SNAP HOOK WITH EYE INSERT**

Formed 316 Stainless Steel



Bulk	Display	A	B	C	D	B.S. (lb.)	Wt.(lb.)	Std. Pack
151065	n/a	1/4"	2-3/8"	1/4"	3/8"	660	.06	10 ea
151085	n/a	5/16"	3-1/8"	3/8"	7/16"	1,700	.16	10 ea
151105	n/a	3/8"	4"	7/16"	9/16"	2,600	.29	10 ea
151125	n/a	7/16"	4-3/4"	9/16"	11/16"	4,400	.42	10 ea

This Snap Hook with Eye Insert provides secure attachment to lines for use on harnesses, fishing lines, mooring buoy, etc. Features a key-lock connection for added security. Constructed of corrosion resistant formed 316 stainless steel.

**SNAP HOOK OFFSET GATE**

Formed 316 Stainless Steel



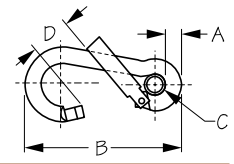
Bulk	Display	A	B	C	D	B.S. (lb.)	Wt.(lb.)	Std. Pack
151082	n/a	5/16"	3-1/8"	3/8"	3/4"	1,700	.15	10 ea
151102	n/a	3/8"	4"	1/2"	7/8"	2,600	.28	10 ea
151122	n/a	7/16"	4-3/4"	11/16"	1-1/16"	4,400	.41	10 ea

This new style, patented Snap Hook with an Offset Gate allows for a larger passage area for rope, cable, or other solid stock material into the snap while providing the same features of traditional style snap hooks. Features a key-lock connection for added security. Constructed of corrosion resistant formed 316 stainless steel.



OFFSET GATE SNAP HOOK WITH EYE INSERT

Formed 316 Stainless Steel



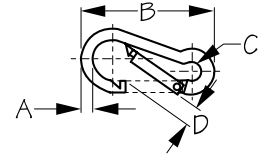
Bulk	Display	A	B	C	D	B.S. (lb.)	Wt.(lb.)	Std. Pack
151087	n/a	5/16"	3-1/8"	3/8"	3/4"	1,700	.15	10 ea
151107	n/a	3/8"	4"	9/16"	7/8"	2,600	.28	10 ea
151127	n/a	7/16"	4-3/4"	5/8"	1-1/16"	4,400	.41	10 ea

These Offset Gate Snap Hooks with Eye Inserts provide secure attachment to lines for use on harnesses, fishing lines, mooring buoy lines, etc. Features a key-lock connection for added security. Constructed of corrosion resistant formed 316 stainless steel.



SNAP HOOK

Formed 316 Stainless Steel



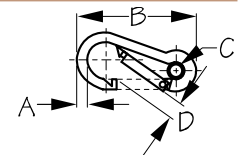
Bulk	Display	A	B	C	D	B.S. (lb.)	Wt.(lb.)	Std. Pack
151550	151550-1	3/16"	2"	5/16"	5/16"	500	.03	10 ea
151560	151560-1	1/4"	2-3/8"	5/16"	5/16"	700	.06	10 ea
151580	151580-1	5/16"	3-1/8"	7/16"	3/8"	1,400	.14	10 ea
151600	151600-1	3/8"	3-15/16"	9/16"	1/2"	2,000	.29	10 ea
151620	151620-1	7/16"	4-11/16"	11/16"	5/8"	2,500	.46	10 ea
n/a	151580-5	Display POP-Snap Hook 5/16"-25 pcs.					3.57	1 ea
n/a	151600-5	Display POP-Snap Hook 3/8"-10 pcs.					3.52	1 ea

These Snap Hooks feature an interlocking, spring-loaded gate snap for quick attachment to a wide range of fixing points. For use with ropes, chains, straps, and small diameter cable. Ideal for multiple rigging and anchoring applications. Constructed of corrosion resistant formed 316 stainless steel.



SNAP HOOK WITH EYE INSERT

Formed 316 Stainless Steel



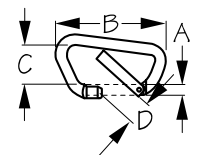
Bulk	Display	A	B	C	D	B.S. (lb.)	Wt.(lb.)	Std. Pack
151565	151565-1	1/4"	2-3/8"	1/4"	5/16"	700	.06	10 ea
151585	151585-1	5/16"	3-1/8"	3/8"	3/8"	1,400	.15	10 ea
151605	151605-1	3/8"	3-15/16"	7/16"	1/2"	2,000	.31	10 ea
151625	151625-1	7/16"	4-11/16"	5/8"	5/8"	2,500	.43	10 ea

These Snap Hooks with Eye Inserts feature an interlocking, spring-loaded gate snap for quick attachment to a wide range of fixing points. The integral eye insert provides a secure attachment for use on harnesses, fishing lines, and mooring buoys. Ideal for multiple rigging and anchoring applications. Constructed of corrosion resistant formed 316 stainless steel.



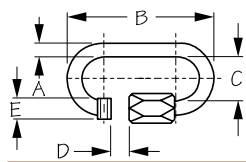
SNAP LINK

Formed 316 Stainless Steel



Bulk	Display	A	B	C	D	B.S. (lb.)	Wt.(lb.)	Std. Pack
152080	n/a	5/16"	3-3/16"	1-1/16"	5/8"	2,600	.16	10 ea
152100	n/a	7/16"	3-15/16"	1-1/4"	3/4"	5,390	.30	10 ea

These high strength Snap Links are individually tested and stamped with the breaking strength in kilograms (breaking strength shown above is in pounds). Features a key-lock connection for added security. Constructed of corrosion resistant formed 316 stainless steel.

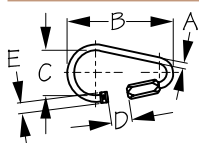
**QUICK LINK**

Formed 316 Stainless Steel



Bulk	Display	A	B	C	D	E	B.S. (lb.)	Wt.(lb.)	Std. Pack
153003	153003-1	1/8"	1-7/16"	7/16"	3/16"	3/16"	2,420	.02	10 ea
153005	153005-1	3/16"	1-15/16"	9/16"	1/4"	5/16"	4,950	.05	10 ea
153006	153006-1	1/4"	2-1/4"	5/8"	5/16"	3/8"	7,150	.08	10 ea
153008	153008-1	5/16"	2-7/8"	3/4"	7/16"	1/2"	12,000	.18	10 ea
153010	153010-1	3/8"	3-1/2"	7/8"	1/2"	1/2"	19,800	.31	10 ea
153012	n/a	1/2"	4-1/8"	1"	5/8"	9/16"	27,500	.51	10 ea
153014	n/a	9/16"	4-3/4"	1-1/8"	5/8"	11/16"	38,500	.81	5 ea
153016	n/a	5/8"	5-1/2"	1-1/4"	3/4"	3/4"	49,500	1.25	5 ea

Reusable and removable Quick Links feature two-sided thread links designed for fast, easy connections between two lengths of chain or for attaching accessories to chain. Hex shaped bolt for easy opening. Ideal for chain repair, hammocks, and gates. Constructed of corrosion resistant formed 316 stainless steel.

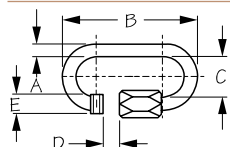
**PEAR STYLE QUICK LINK**

Formed 316 Stainless Steel



Bulk	Display	A	B	C	D	E	B.S. (lb.)	Wt.(lb.)	Std. Pack
153603	n/a	1/8"	2-1/16"	7/8"	3/8"	3/16"	1,430	.03	10 ea
153605	n/a	3/16"	2-13/16"	1-1/8"	9/16"	5/16"	2,970	.07	10 ea
153606	n/a	1/4"	3-3/16"	1-1/4"	9/16"	3/8"	4,400	.11	10 ea
153608	n/a	5/16"	3-15/16"	1-1/2"	11/16"	7/16"	7,260	.24	10 ea
153610	n/a	3/8"	4-13/16"	1-13/16"	13/16"	1/2"	12,100	.41	10 ea
153612	n/a	1/2"	5-9/16"	2-1/8"	15/16"	9/16"	16,500	.71	10 ea
153614	n/a	9/16"	6-7/16"	2-5/16"	1-1/8"	11/16"	23,100	1.06	5 ea

Reusable and removable Pear Style Quick Links feature two-sided thread links designed for fast, easy connections between two lengths of chain or for attaching accessories to chain. The pear shape design places more of the load on the stronger, non-gate side which increases the breaking strength. Hex shaped bolt for easy opening. Ideal for chain repair, hammocks, and gates. Constructed of corrosion resistant formed 316 stainless steel.

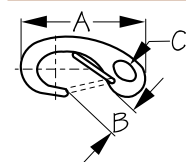
**QUICK LINK**

Formed 304 Stainless Steel



Bulk	Display	A	B	C	D	E	B.S. (lb.)	Wt.(lb.)	Std. Pack
153703	153703-1	1/8"	1-3/8"	7/16"	1/8"	3/16"	2,000	.02	10 ea
153705	153705-1	3/16"	2-1/16"	9/16"	1/4"	5/16"	4,000	.05	10 ea
153706	153706-1	1/4"	2-1/4"	5/8"	9/32"	3/8"	6,750	.08	10 ea
153708	153708-1	5/16"	2-15/16"	3/4"	7/16"	7/16"	9,600	.18	10 ea
153710	153710-1	3/8"	3-1/2"	7/8"	7/16"	1/2"	15,800	.31	10 ea
153712	153712-1	1/2"	4-1/8"	1"	9/16"	9/16"	22,000	.51	10 ea

Reusable and removable Quick Links feature two-sided thread links designed for fast, easy connections between two lengths of chain or for attaching accessories to chain. Hex shaped bolt for easy opening. Ideal for chain repair, hammocks, and gates. Constructed of corrosion resistant formed 304 stainless steel.

**SPRING GATE SNAP HOOK**

Investment Cast 316 Stainless Steel



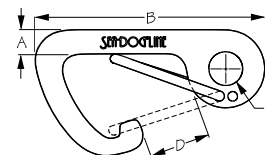
Bulk	Display	A	B	C	Wt.(lb.)	Std. Pack
154250	154250-1	2"	7/16"	1/4"	.04	10 ea
154270	154270-1	2-3/4"	7/16"	3/8"	.11	10 ea
154300	154300-1	3-15/16"	15/16"	9/16"	.31	10 ea

These Spring Gate Snap Hooks feature a quick-connect, wire lever gate and torsion spring. Simple to release lobster-style clasp makes them ideal when the snap needs to be frequently removed. Oblong design allows more gate clearance while the rounded edges prevent snagging. Constructed of corrosion resistant investment cast 316 stainless steel.



SPRING GATE ASYMMETRICAL SNAP HOOK

Investment Cast 316 Stainless Steel



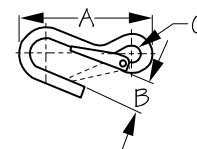
Bulk	Display	A	B	C	D	Wt.(lb.)	Std. Pack
155500	155500-1	3/8"	4"	5/8"	7/8"	.40	10 ea

These Spring Gate Asymmetrical Snap Hooks feature a quick-connect, wire lever gate and torsion spring. Simple to release lobster-style clasp makes them ideal for applications where the snap needs to be frequently removed. Oblong design allows more gate clearance while the rounded edges prevent snagging. Constructed of corrosion resistant investment cast 316 stainless steel. Also included in the Boat Hook Mooring Buoy Snap Kit (491055-1).



SPRING HOOK

Electro-Galvanized Formed Mild Steel



Bulk	Display	A	B	C	B.S. (lb.)	Wt.(lb.)	Std. Pack
155630	155630-1	4-1/16"	1"	1/2"	1,200	.26	10 ea

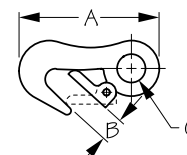
This Spring Hook features a spring-loaded closure for quick and easy connection. 1,200 lbs. breaking strength make them suitable for a variety of applications. Constructed of electro-galvanized formed mild steel for both galvanic and corrosion protection.

⚠ WARNING: Cancer and Reproductive Harm - www.P65Warnings.ca.gov



MALLEABLE UTILITY SNAP HOOK

Cast Malleable Steel Nickel Plated



Bulk	Display	A	B	C	B.S. (lb.)	Wt.(lb.)	Std. Pack
155812	155812-1	3-7/16"	1/2"	11/16"	2,000	.28	10 ea

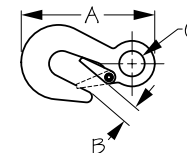
This Malleable Utility Snap Hook is appropriate for many uses. They have a breaking strength of 2,000 lbs. Constructed of nickel plated malleable cast steel.

⚠ WARNING: Cancer and Reproductive Harm - www.P65Warnings.ca.gov



UTILITY SNAP HOOK

Electro-Galvanized Forged Steel



Bulk	Display	A	B	C	B.S. (lb.)	Wt.(lb.)	Std. Pack
155822	155822-1	3-7/8"	11/16"	3/4"	5,000	.43	10 ea

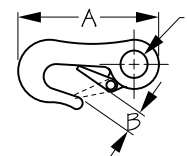
This Utility Snap Hook features a spring-loaded closure for quick and easy connections. 5,000 lb. breaking strength make them suitable for a variety of applications, including trailer winches and windlasses. Constructed of electro-galvanized formed mild steel for both galvanic and corrosion protection.

⚠ WARNING: Cancer and Reproductive Harm - www.P65Warnings.ca.gov



HEAVY DUTY UTILITY SNAP HOOK

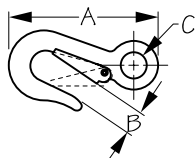
Electro-Galvanized Forged Steel



Bulk	Display	A	B	C	B.S. (lb.)	Wt.(lb.)	Std. Pack
155832	155832-1	4-1/4"	11/16"	3/4"	7,000	.43	10 ea

This Heavy Duty Utility Snap Hook features a spring-loaded closure for quick and easy connections. 7,000 lbs. breaking strength make them ideal for rugged marine applications. Constructed of electro-galvanized formed mild steel for both galvanic and corrosion protection.

⚠ WARNING: Cancer and Reproductive Harm - www.P65Warnings.ca.gov

**MOORING SNAP HOOK**

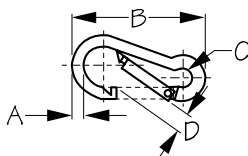
Cast Steel Nickel Plated



Bulk	Display	A	B	C	B.S. (lb.)	Wt.(lb.)	Std. Pack
155841	155841-1	3-15/16"	9/16"	3/4"	1,600	.26	10 ea

This Mooring Snap Hook features a spring-loaded closure for quick and easy connections. 1,600 lbs. breaking strength make them ideal for many uses, including mooring buoy and anchoring applications. Constructed of nickel plated malleable cast steel.

▲ **WARNING:** Cancer and Reproductive Harm - www.P65Warnings.ca.gov

**SNAP HOOK**

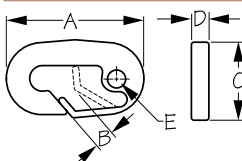
Electro-Galvanized Formed Mild Steel



Bulk	Display	A	B	C	D	B.S. (lb.)	Wt.(lb.)	Std. Pack
156060	156060-1	1/4"	2-3/8"	5/16"	5/16"	560	.06	10 ea
156080	156080-1	5/16"	3-3/16"	7/16"	7/16"	1,140	.14	10 ea
156100	156100-1	3/8"	3-15/16"	9/16"	1/2"	1,600	.29	10 ea
156120	156120-1	7/16"	4-3/4"	3/4"	5/8"	2,000	.42	10 ea
156140	n/a	1/2"	5-9/16"	3/4"	3/4"	2,800	.57	10 ea
156160	n/a	1/2"	6-1/4"	7/8"	7/8"	6,000	.78	10 ea
n/a	156080-5	Display POP-Snap Hook 5/16"-25 pcs.					3.69	1 ea
n/a	156100-5	Display POP-Snap Hook 3/8"-15 pcs.					4.88	1 ea

These Snap Hooks feature an interlocking, spring-loaded gate snap for quick attachment to a wide range of fixing points. For use with ropes, chains, straps, and small diameter cable. Ideal for multiple rigging and anchoring applications. Constructed of electro-galvanized formed mild steel for both galvanic and corrosion protection.

▲ **WARNING:** Cancer and Reproductive Harm - www.P65Warnings.ca.gov

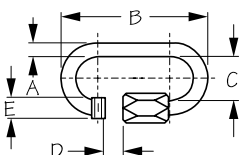
**SKI ROPE SNAP**

Injection Molded Nylon



Bulk	Display	A	B	C	D	E	Wt.(lb.)	Std. Pack
157110	157110-1	3-1/4"	5/8"	1-13/16"	7/16"	7/16"	.05	10 ea

This Ski Rope Snap provides a quick and easy way to attach ski ropes to ski tows. Constructed of UV stabilized injection molded nylon.

**QUICK LINK**

Electro-Galvanized Formed Mild Steel



Bulk	Display	A	B	C	D	E	B.S. (lb.)	Wt.(lb.)	Std. Pack
158003	158003-1	1/8"	1-7/16"	3/8"	3/16"	3/16"	1,100	.02 / .04	10 ea / 10 pr
158005	158005-1	3/16"	2"	1/2"	1/4"	5/16"	3,080	.04	10 ea
158006	158006-1	1/4"	2-1/4"	1/2"	5/16"	3/8"	4,400	.10	10 ea
158008	158008-1	5/16"	2-15/16"	11/16"	3/8"	7/16"	7,700	.18	10 ea
158010	158010-1	3/8"	3-1/2"	15/16"	1/2"	1/2"	12,100	.33	10 ea
158012	158012-1	1/2"	4-3/16"	15/16"	9/16"	9/16"	18,000	.53	10 ea
n/a	158008-5	Display POP-Quick Link 5/16"-25 pcs.					4.69	1 ea	

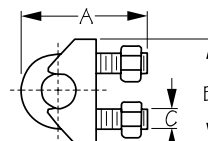
Reusable and removable Quick Links feature two-sided thread links designed for fast, easy connections between two lengths of chain or for attaching accessories to chain. Hex shaped bolt for easy opening. Ideal for chain repair, hammocks, and restraining gates. Constructed of electro-galvanized formed mild steel for both galvanic and corrosion protection.

▲ **WARNING:** Cancer and Reproductive Harm - www.P65Warnings.ca.gov



MALLEABLE WIRE ROPE CLIP

Electro-Galvanized Malleable Steel



Bulk	Display	Wire Size	A	B	C	Wt.(lb.)	Std. Pack
159103	159103-1	1/8"	15/16"	7/8"	1/8"	.04 / .08	10 ea / 10 pr
159105	159105-1	3/16"	1-1/8"	1"	3/16"	.06 / .12	10 ea / 10 pr
159106	159106-1	1/4"	1-7/16"	1-1/4"	1/4"	.11 / .22	10 ea / 10 pr
159108	159108-1	5/16"	1-9/16"	1-3/8"	1/4"	.13 / .26	10 ea / 10 pr
159110	159110-1	3/8"	1-15/16"	1-5/8"	5/16"	.23 / .46	10 ea / 10 pr
159111	n/a	7/16"	2"	1-11/16"	5/16"	.23	10 ea
159112	159112-1	1/2"	2-7/16"	1-15/16"	3/8"	.34	10 ea
159116	n/a	5/8"	2-5/8"	2-3/16"	7/16"	.52	10 ea
159119	n/a	3/4"	3-1/16"	2-3/8"	1/2"	.87	10 ea
159122	n/a	7/8"	3-1/2"	2-13/16"	9/16"	1.33	10 ea
159126	n/a	1"	3-15/16"	3-1/16"	9/16"	1.78	10 ea

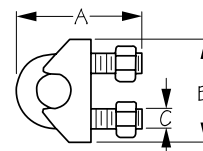
Malleable Wire Rope Clips are used to clamp the loose end of a length of wire rope once it has been looped back to form an eye. These fittings consist of a u-bolt and saddle secured by two nuts. Wire rope assemblies generally require multiple wire rope clips to secure the ends properly. Constructed of electro-galvanized malleable steel for corrosion protection. Not designed for overhead lifting applications.

⚠ WARNING: Cancer and Reproductive Harm - www.P65Warnings.ca.gov



WIRE ROPE CLIP

Investment Cast 316 Stainless Steel Body/304 Stainless Steel U-Bolt



Bulk	Display	Wire Size	A	B	C (Threads)	Wt.(lb.)	Std. Pack
159502	159502-1	2 mm	11/16"	9/16"	3 mm-.50	.02	10 ea
159503	159503-1	3 mm	13/16"	5/8"	3 mm-.50	.03	10 ea
159504	159504-1	4 mm	15/16"	3/4"	4 mm-.70	.04	10 ea
159505	159505-1	5 mm	1-1/8"	7/8"	5 mm-.80	.05	10 ea
159506	159506-1	6 mm	1-1/4"	1-1/16"	6 mm-1.00	.09	10 ea
159508	159508-1	8 mm	1-5/8"	1-3/8"	8 mm-1.25	.18	10 ea
159510	159510-1	10 mm	2"	1-3/4"	10 mm-1.50	.34	10 ea
159512	n/a	12 mm	2-1/2"	1-15/16"	12 mm-1.75	.53	10 ea

These Wire Rope Clips used in conjunction with thimbles offer an alternative to splicing looped ends of wire rope. These fittings consist of a u-bolt and saddle secured by two nuts. Recommended for use on uncoated wire rope. Constructed of corrosion resistant stainless steel with metric threads. Not designed for overhead lifting applications.

LIGHT UP THE NIGHT...WITH STYLE

**AURORA LED
POP-UP LIGHT**
404610-3